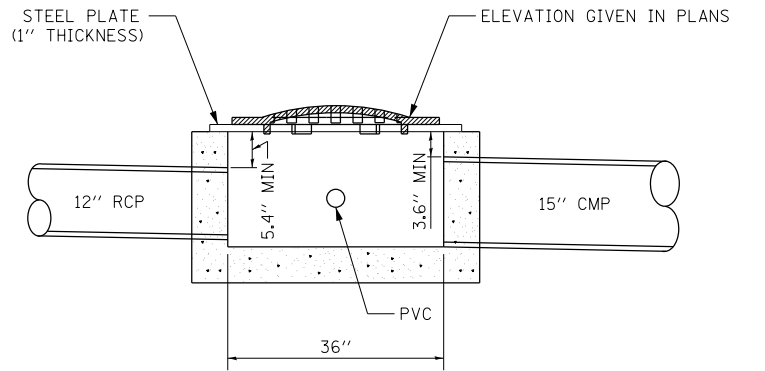
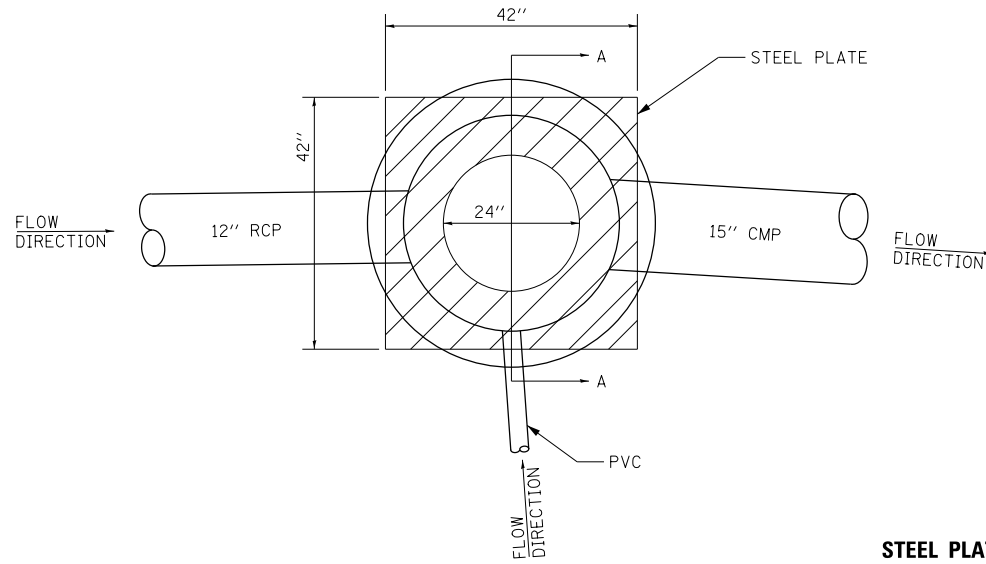
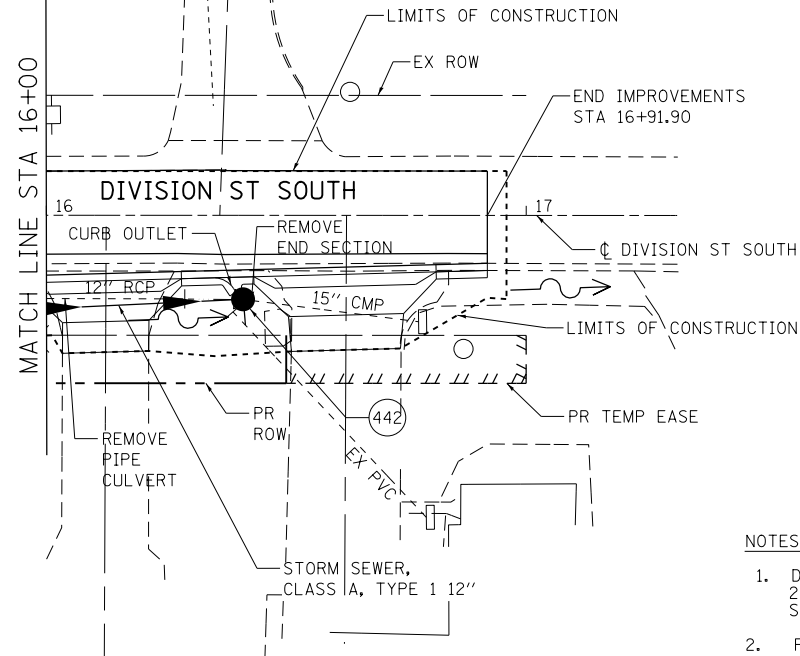


| STRUCTURE NUMBER | STATION | OFFSET   | STRUCTURE TYPE | TOP OF INLET ELEV | THROAT ELEV | INVERT ELEV |        |   |        | REMARKS      |
|------------------|---------|----------|----------------|-------------------|-------------|-------------|--------|---|--------|--------------|
|                  |         |          |                |                   |             | N           | S      | E | W      |              |
| 442              | 16+41   | 17.5' RT | INLETS, TYPE B | 428.25            | N/A         | 426.55      | 426.45 |   | 427.00 | TYPE 8 GRATE |



|           |  |
|-----------|--|
| DATE      |  |
| BY        |  |
| PLANNED   |  |
| CHECKED   |  |
| NO. _____ |  |
| DATE      |  |
| BY        |  |
| PLANNED   |  |
| CHECKED   |  |
| NO. _____ |  |



**INLET 442**  
**STEEL PLATE INCLUDED IN PAYMENT FOR**  
**INLETS, TYPE B, TYPE 8 GRATE**

NOT TO SCALE



**NOTES:**

- DRAINAGE COMMITMENT: THE EXISTING PVC PIPE OUTLET AT APPROXIMATE STATION 16+40, 20' RIGHT, WILL BE CONNECTED IN TO THE PROPOSED JUNCTION DRAINAGE CHAMBER ALONG SOUTH DIVISION STREET SO THE PIPE WILL CONTINUE TO DRAIN PROPERLY.
- FOR CURB OUTLET DETAILS, SEE DRAWING NO. RD-06.

|           |  |
|-----------|--|
| DATE      |  |
| BY        |  |
| PLANNED   |  |
| CHECKED   |  |
| NO. _____ |  |
| DATE      |  |
| BY        |  |
| PLANNED   |  |
| CHECKED   |  |
| NO. _____ |  |



FILE NAME = D:\978258-sh1-drain-20.dgn  
**CH2MHILL**

|                              |            |           |
|------------------------------|------------|-----------|
| USER NAME = mfox             | DESIGNED - | REVISED - |
|                              | CHECKED -  | REVISED - |
| PLLOT SCALE = 40.0000' / in. | DRAWN -    | REVISED - |
| PLLOT DATE = 1/31/2013       | CHECKED -  | REVISED - |

**STATE OF ILLINOIS**  
**DEPARTMENT OF TRANSPORTATION**

**DRAINAGE AND UTILITY PLANS**  
**DIVISION STREET SOUTH**

SCALE: SHEET 28 OF 43 SHEETS STA. 16+00.00 TO STA. 16+91.90

|                           |                     |                    |              |           |
|---------------------------|---------------------|--------------------|--------------|-----------|
| F.A.P. RTE.               | SECTION             | COUNTY             | TOTAL SHEETS | SHEET NO. |
| 331                       | (1-4)R-2, N-4, TS-4 | WILLIAMSON         | 381          | 183       |
| DRAWING NO. DU-28         |                     | CONTRACT NO. 78258 |              |           |
| ILLINOIS FED. AID PROJECT |                     |                    |              |           |