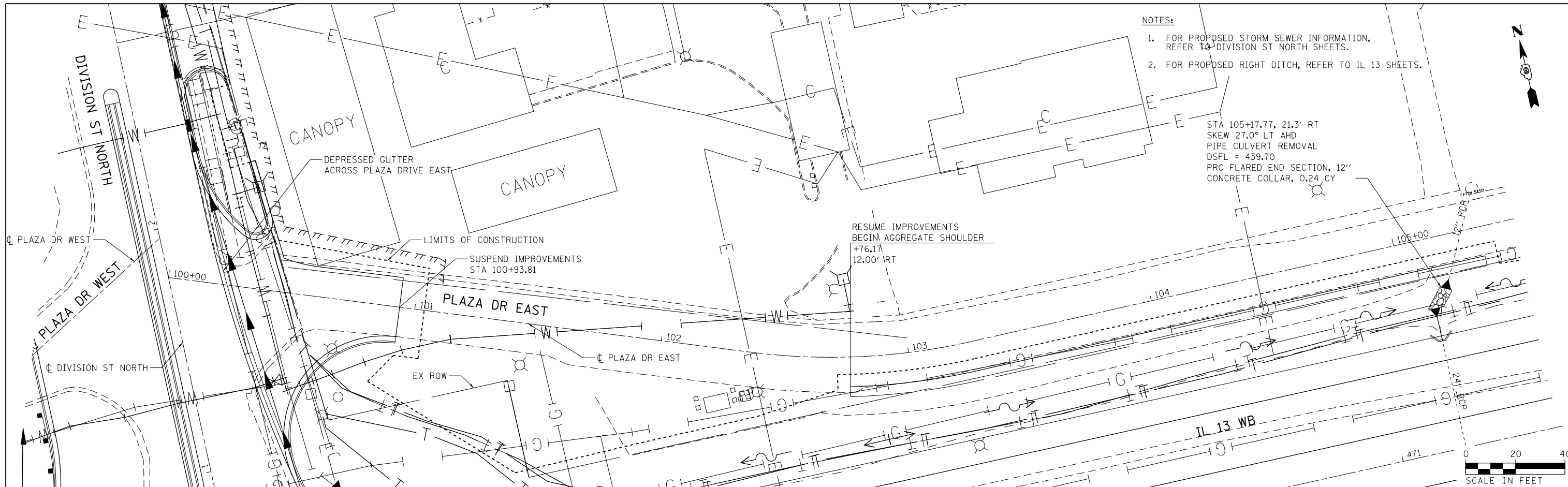


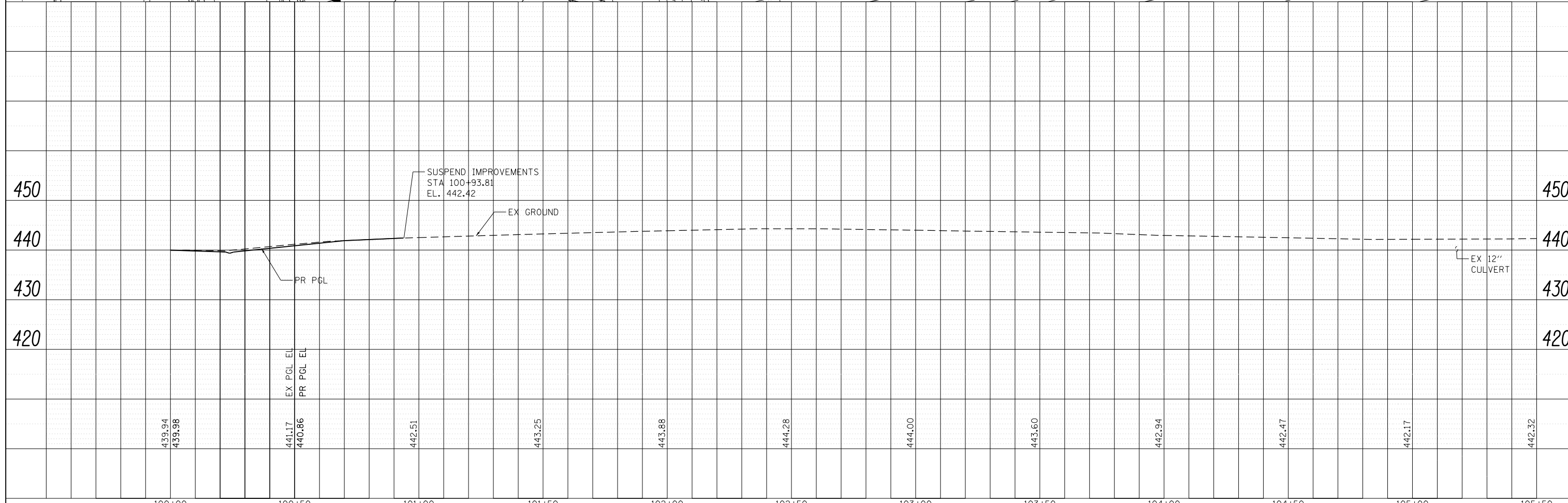
PLAN	SURVEYED	DATE
	PLOTTED	BY
	ALIGNED	
	CHECKED	
	FILED	
	CARD FILE NAME	
	NO.	

PROFILE	SURVEYED	DATE
	PLOTTED	BY
	GRADES CHECKED	
	STRUCTURE NOTATIONS CHECKED	
	NO.	



- NOTES:
- FOR PROPOSED STORM SEWER INFORMATION, REFER TO DIVISION ST NORTH SHEETS.
  - FOR PROPOSED RIGHT DITCH, REFER TO IL 13 SHEETS.

STA 105+17.77, 21.3' RT  
 SKEW 27.0° LT AHD  
 PIPE CULVERT REMOVAL  
 DSFL = 439.70  
 PRC FLARED END SECTION, 12"  
 CONCRETE COLLAR, 0.24 CY



FILE NAME =	USER NAME = mfox	DESIGNED -	REVISED -	<b>STATE OF ILLINOIS</b> <b>DEPARTMENT OF TRANSPORTATION</b>	<b>DRAINAGE AND UTILITY PLANS</b> <b>PLAZA DRIVE EAST</b>	F.A. RTE.	SECTION	COUNTY	TOTAL SHEETS	SHEET NO.	
D978258-shd-drain-27.dgn		DRAWN -	REVISED -			331	(1-4)R-2, N-4, TS-4	WILLIAMSON	381	193	
<b>CH2MHILL</b>	PLOT SCALE = 40.0000' / in.	CHECKED -	REVISED -			DRAWING NO. DU-38		CONTRACT NO. 78258		ILLINOIS FED. AID PROJECT	
	PLOT DATE = 1/31/2013	DATE -	REVISED -			SCALE:	SHEET NO. 38 OF 43 SHEETS	STA. 100+00.00	TO STA. 105+35.00		