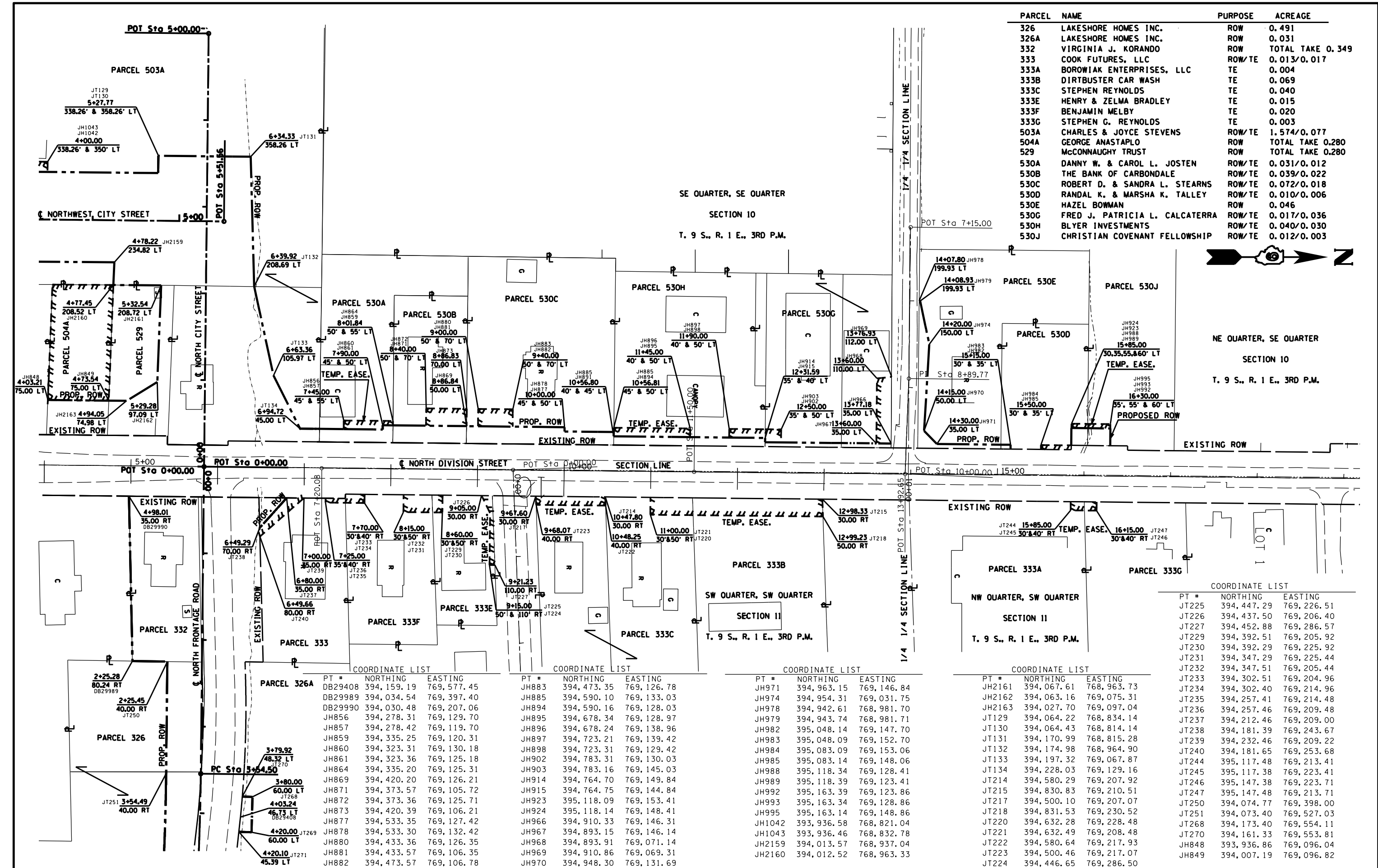


PARCEL NAME	PURPOSE	ACREAGE
326 LAKESHORE HOMES INC.	ROW	0.491
326A LAKESHORE HOMES INC.	ROW	0.031
332 VIRGINIA J. KORANDO	ROW	TOTAL TAKE 0.349
333 COOK FUTURES, LLC	ROW/TE	0.013/0.017
333A BOROWIAK ENTERPRISES, LLC	TE	0.004
333B DIRTBUSTER CAR WASH	TE	0.069
333C STEPHEN REYNOLDS	TE	0.040
333E HENRY & ZELMA BRADLEY	TE	0.015
333F BENJAMIN MELBY	TE	0.020
333G STEPHEN G. REYNOLDS	TE	0.003
503A CHARLES & JOYCE STEVENS	ROW/TE	1.574/0.077
504A GEORGE ANASTAPLO	ROW	TOTAL TAKE 0.280
529 MCCONNAUCHY TRUST	ROW	TOTAL TAKE 0.280
530A DANNY W. & CAROL L. JOSTEN	ROW/TE	0.031/0.012
530B THE BANK OF CARBONDALE	ROW/TE	0.039/0.022
530C ROBERT D. & SANDRA L. STEARNS	ROW/TE	0.072/0.018
530D RANDAL K. & MARSHA K. TALLEY	ROW/TE	0.010/0.006
530E HAZEL BOWMAN	ROW	0.046
530G FRED J. PATRICIA L. CALCATERRA	ROW/TE	0.017/0.036
530H BLYER INVESTMENTS	ROW/TE	0.040/0.030
530J CHRISTIAN COVENANT FELLOWSHIP	ROW/TE	0.012/0.003



NE QUARTER, SE QUARTER  
SECTION 10  
T. 9 S., R. 1 E., 3RD P.M.

COORDINATE LIST

PT #	NORTHING	EASTING
JT225	394, 447.29	769, 226.51
JT226	394, 437.50	769, 206.40
JT227	394, 452.88	769, 286.57
JT229	394, 392.51	769, 205.92
JT230	394, 392.29	769, 225.92
JT231	394, 347.29	769, 225.44
JT232	394, 347.51	769, 205.44
JT233	394, 302.51	769, 204.96
JT234	394, 302.40	769, 214.96
JT235	394, 257.41	769, 214.48
JT236	394, 257.46	769, 209.48
JT237	394, 212.46	769, 209.00
JT238	394, 181.39	769, 243.67
JT239	394, 232.46	769, 209.22
JT240	394, 181.65	769, 253.68
JT244	395, 117.48	769, 213.41
JT245	395, 117.38	769, 223.41
JT246	395, 147.38	769, 223.71
JT247	395, 147.48	769, 213.71
JT250	394, 074.77	769, 398.00
JT251	394, 073.40	769, 527.03
JT268	394, 173.40	769, 554.11
JT270	394, 161.33	769, 553.81
JH848	393, 936.86	769, 096.04
JH849	394, 007.19	769, 096.82