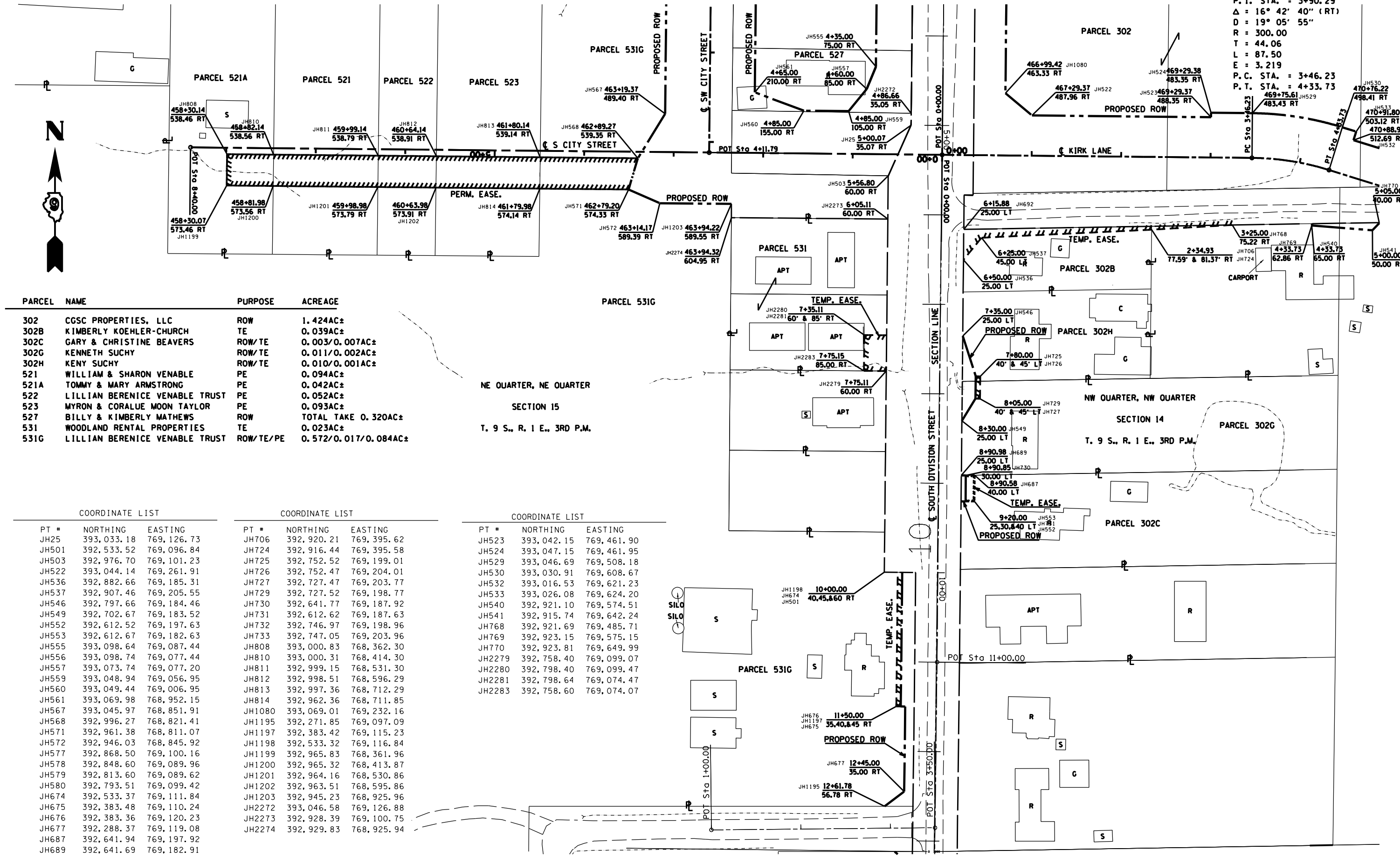


EXIST. CURVE KIRKP-1
 P. I. STA. = 3+90.29
 $\Delta = 16^\circ 42' 40''$ (RT)
 $D = 19^\circ 05' 55''$
 $R = 300.00$
 $T = 44.06$
 $L = 87.50$
 $E = 3.219$
 P.C. STA. = 3+46.23
 P.T. STA. = 4+33.73



PARCEL	NAME	PURPOSE	ACREAGE
302	CGSC PROPERTIES, LLC	ROW	1.424AC±
302B	KIMBERLY KOEHLER-CHURCH	TE	0.039AC±
302C	GARY & CHRISTINE BEAVERS	ROW/TE	0.003/0.007AC±
302G	KENNETH SUCHY	ROW/TE	0.011/0.002AC±
302H	KENY SUCHY	ROW/TE	0.010/0.001AC±
521	WILLIAM & SHARON VENABLE	PE	0.094AC±
521A	TOMMY & MARY ARMSTRONG	PE	0.042AC±
522	LILLIAN BERENICE VENABLE TRUST	PE	0.052AC±
523	MYRON & CORALUE MOON TAYLOR	PE	0.093AC±
527	BILLY & KIMBERLY MATHEWS	ROW	TOTAL TAKE 0.320AC±
531	WOODLAND RENTAL PROPERTIES	TE	0.023AC±
531G	LILLIAN BERENICE VENABLE TRUST	ROW/TE/PE	0.572/0.017/0.084AC±

NE QUARTER, NE QUARTER
 SECTION 15
 T. 9 S., R. 1 E., 3RD P.M.

COORDINATE LIST

PT #	NORTHING	EASTING
JH25	393,033.18	769,126.73
JH501	392,533.52	769,096.84
JH503	392,976.70	769,101.23
JH522	393,044.14	769,261.91
JH536	392,882.66	769,185.31
JH537	392,907.46	769,205.55
JH546	392,797.66	769,184.46
JH549	392,702.67	769,183.52
JH552	392,612.52	769,197.63
JH553	392,612.67	769,182.63
JH555	393,098.64	769,087.44
JH556	393,098.74	769,077.44
JH557	393,073.74	769,077.20
JH559	393,048.94	769,056.95
JH560	393,049.44	769,006.95
JH561	393,069.98	768,952.15
JH567	393,045.97	768,851.91
JH568	392,996.27	768,821.41
JH571	392,961.38	768,811.07
JH572	392,946.03	768,845.92
JH577	392,868.50	769,100.16
JH578	392,848.60	769,089.96
JH579	392,813.60	769,089.62
JH580	392,793.51	769,099.42
JH674	392,533.37	769,111.84
JH675	392,383.48	769,110.24
JH676	392,383.36	769,120.23
JH677	392,288.37	769,119.08
JH687	392,641.94	769,197.92
JH689	392,641.69	769,182.91
JH692	392,916.77	769,185.64

COORDINATE LIST

PT #	NORTHING	EASTING
JH706	392,920.21	769,395.62
JH724	392,916.44	769,395.58
JH725	392,752.52	769,199.01
JH726	392,752.47	769,204.01
JH727	392,727.47	769,203.77
JH729	392,727.52	769,198.77
JH730	392,641.77	769,187.92
JH731	392,612.62	769,187.63
JH732	392,746.97	769,198.96
JH733	392,747.05	769,203.96
JH808	393,000.83	768,362.30
JH810	393,000.31	768,414.30
JH811	392,999.15	768,531.30
JH812	392,998.51	768,596.29
JH813	392,997.36	768,712.29
JH814	392,962.36	768,711.85
JH1080	393,069.01	769,232.16
JH1195	392,271.85	769,097.09
JH1197	392,383.42	769,115.23
JH1198	392,533.32	769,116.84
JH1199	392,965.83	768,361.96
JH1200	392,965.32	768,413.87
JH1201	392,964.16	768,530.86
JH1202	392,963.51	768,595.86
JH1203	392,945.23	768,925.96
JH2272	393,046.58	769,126.88
JH2273	392,928.39	769,100.75
JH2274	392,929.83	768,925.94

COORDINATE LIST

PT #	NORTHING	EASTING
JH523	393,042.15	769,461.90
JH524	393,047.15	769,461.95
JH529	393,046.69	769,508.18
JH530	393,030.91	769,608.67
JH532	393,016.53	769,621.23
JH533	393,026.08	769,624.20
JH540	392,921.10	769,574.51
JH541	392,915.74	769,642.24
JH768	392,921.69	769,485.71
JH769	392,923.15	769,575.15
JH770	392,923.81	769,649.99
JH2279	392,758.40	769,099.07
JH2280	392,798.40	769,099.47
JH2281	392,798.64	769,074.47
JH2283	392,758.60	769,074.07

FILE NAME =
 FILEL

USER NAME = hobbsjg
 PLOT SCALE = 100.0000'/in
 PLOT DATE = \$DATE*

DESIGNED -
 DRAWN -
 CHECKED -
 DATE -

REVISED -
 REVISED -
 REVISED -
 REVISED -

STATE OF ILLINOIS
 DEPARTMENT OF TRANSPORTATION

R-99-004-03
 RIGHT OF WAY PLANS/S. DIVISION ST.
 SCALE: 1" = 100'
 SHEET OF SHEETS STA. 4+00.00 TO STA. 13+00.00

F.A. R.T.E.	SECTION	COUNTY	TOTAL SHEETS	SHEET NO.
14	(1-4)R-2,N-4,TS-4	WILLIAMSON		201
CONTRACT NO. 78258				
ILLINOIS FED. AID PROJECT				