

NOTES:

1. ELEVATIONS GIVEN ARE AT THE EDGE OF PAVEMENT, UNLESS OTHERWISE INDICATED.

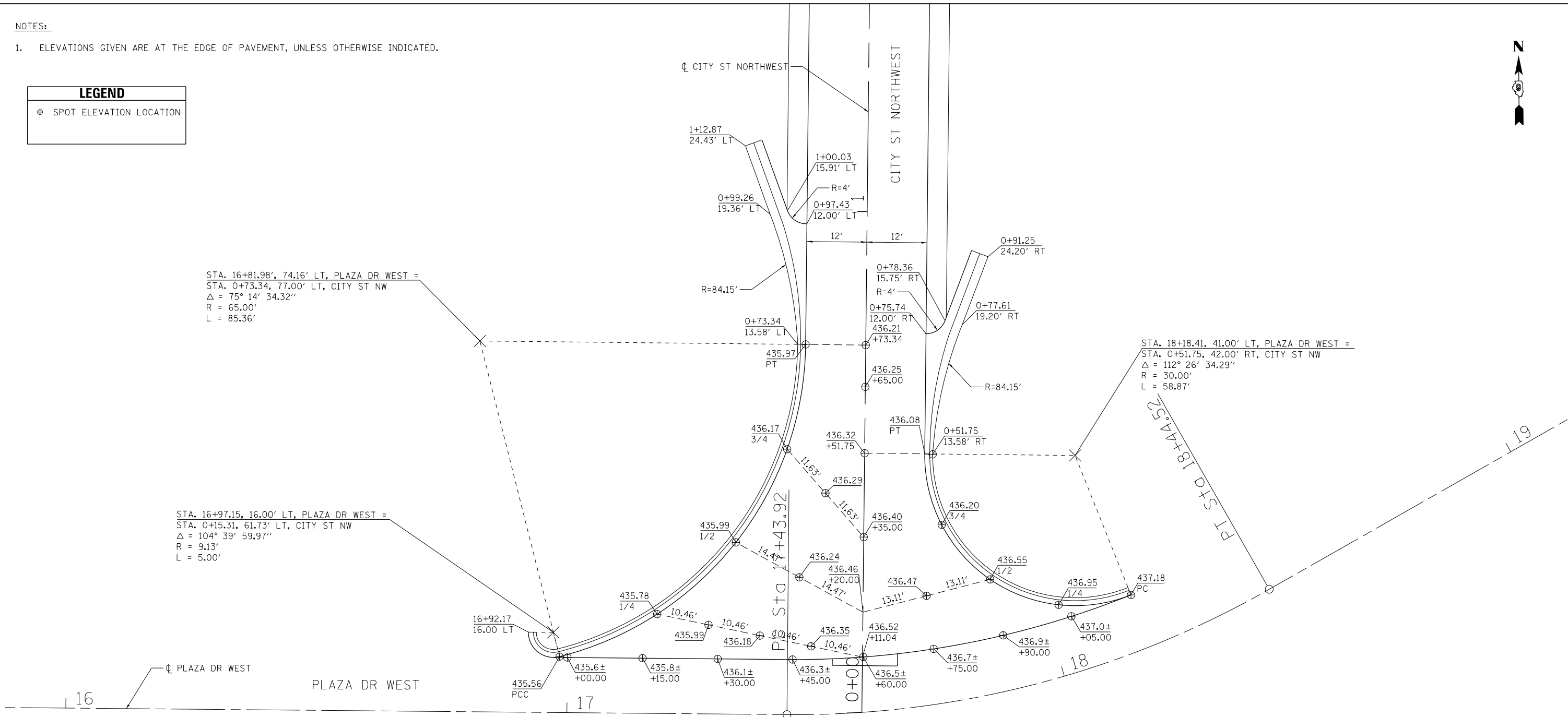
LEGEND	
⊕	SPOT ELEVATION LOCATION



STA. 16+81.98', 74.16' LT, PLAZA DR WEST =  
 STA. 0+73.34, 77.00' LT, CITY ST NW  
 $\Delta = 75^\circ 14' 34.32''$   
 $R = 65.00'$   
 $L = 85.36'$

STA. 16+97.15, 16.00' LT, PLAZA DR WEST =  
 STA. 0+15.31, 61.73' LT, CITY ST NW  
 $\Delta = 104^\circ 39' 59.97''$   
 $R = 9.13'$   
 $L = 5.00'$

STA. 18+18.41, 41.00' LT, PLAZA DR WEST =  
 STA. 0+51.75, 42.00' RT, CITY ST NW  
 $\Delta = 112^\circ 26' 34.29''$   
 $R = 30.00'$   
 $L = 58.87'$



FILE NAME = D978258-sht-intersec-03.dgn	USER NAME = mfox	DESIGNED - KN	REVISED -
<b>CH2MHILL</b>	DRAWN - AS	CHECKED -	REVISED -
PLOT SCALE = 20.0000' / in.	DATE -	DATE -	REVISED -
PLOT DATE = 1/31/2013			

**STATE OF ILLINOIS  
 DEPARTMENT OF TRANSPORTATION**

**INTERSECTION DETAILS  
 PLAZA DRIVE WEST AND CITY STREET NORTHWEST**

SCALE: SHEET NO. 3 OF 17 SHEETS STA. TO STA.

F.A.P. RTE.	SECTION	COUNTY	TOTAL SHEETS	SHEET NO.
331	(1-4)R-2, N-4, TS-4	WILLIAMSON	381	207
DRAWING NO. ID-03		CONTRACT NO. 78258		
ILLINOIS FED. AID PROJECT				