

NOTES:

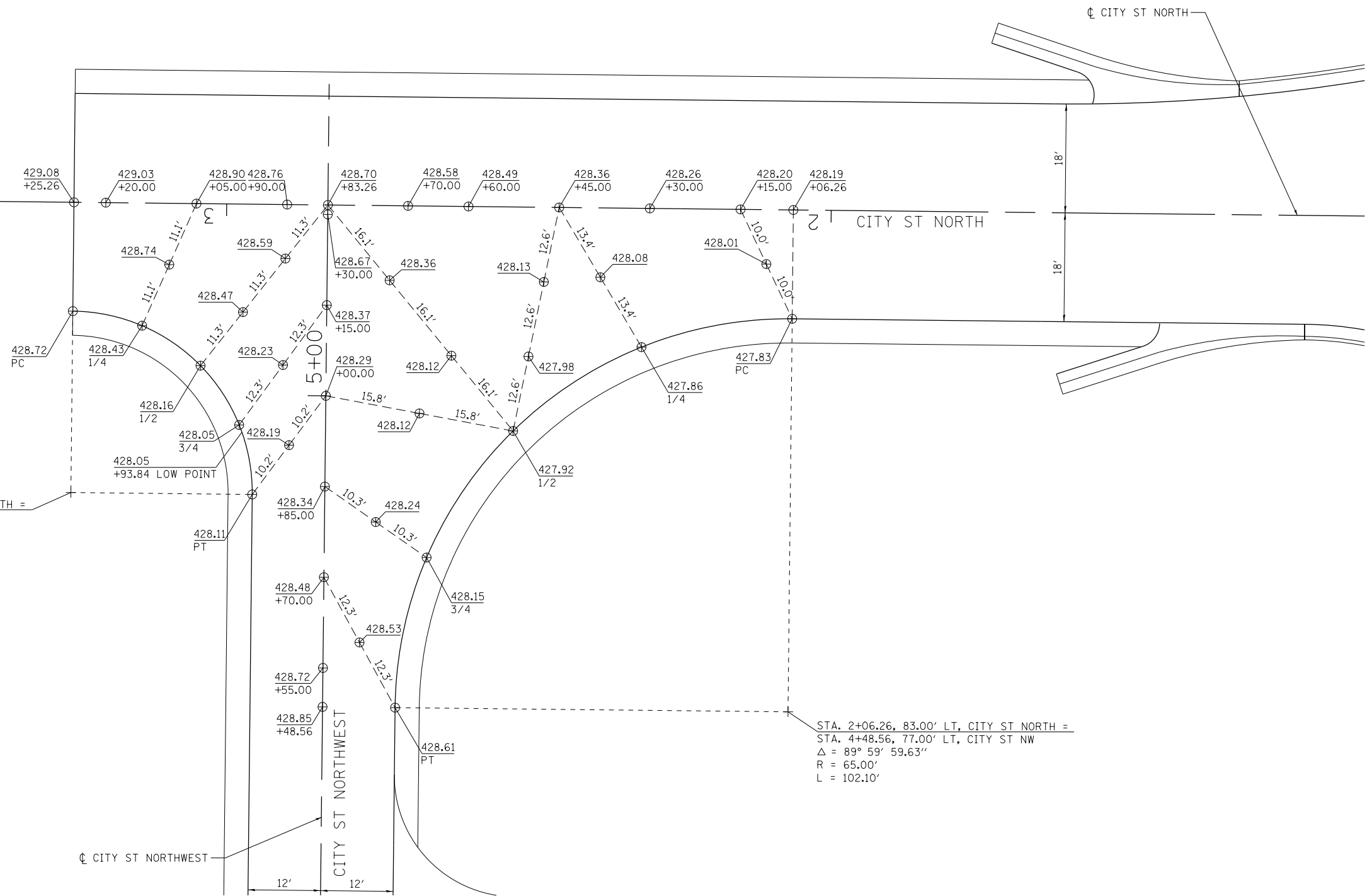
- ELEVATIONS GIVEN ARE AT THE EDGE OF PAVEMENT, UNLESS OTHERWISE INDICATED.

LEGEND	
⊕	SPOT ELEVATION LOCATION



STA. 3+25.26, 48.00' LT, CITY ST NORTH =  
 STA. 4+83.56, 42.00' LT, CITY ST NW  
 $\Delta = 90^\circ 00' 00.00''$   
 $R = 30.00'$   
 $L = 47.12'$

STA. 2+06.26, 83.00' LT, CITY ST NORTH =  
 STA. 4+48.56, 77.00' LT, CITY ST NW  
 $\Delta = 89^\circ 59' 59.63''$   
 $R = 65.00'$   
 $L = 102.10'$



FILE NAME =  
 D978258-sht-intersec-05.dgn  
**CH2MHILL**

USER NAME = mfox	DESIGNED - KN	REVISED -
DRAWN - AS	REVISIONS -	
PLOT SCALE = 20.0000' / in.	CHECKED -	REVISIONS -
PLOT DATE = 3/11/2013	DATE -	REVISIONS -

**STATE OF ILLINOIS  
 DEPARTMENT OF TRANSPORTATION**

**INTERSECTION DETAILS  
 CITY STREET NORTH AND CITY STREET NORTHWEST**

SCALE: SHEET NO. 5 OF 17 SHEETS STA. TO STA.

F.A.P. RTE.	SECTION	COUNTY	TOTAL SHEETS	SHEET NO.
331	(1-4)R-2, N-4, TS-4	WILLIAMSON	381	209
DRAWING NO. ID-05			CONTRACT NO. 78258	
ILLINOIS FED. AID PROJECT				