

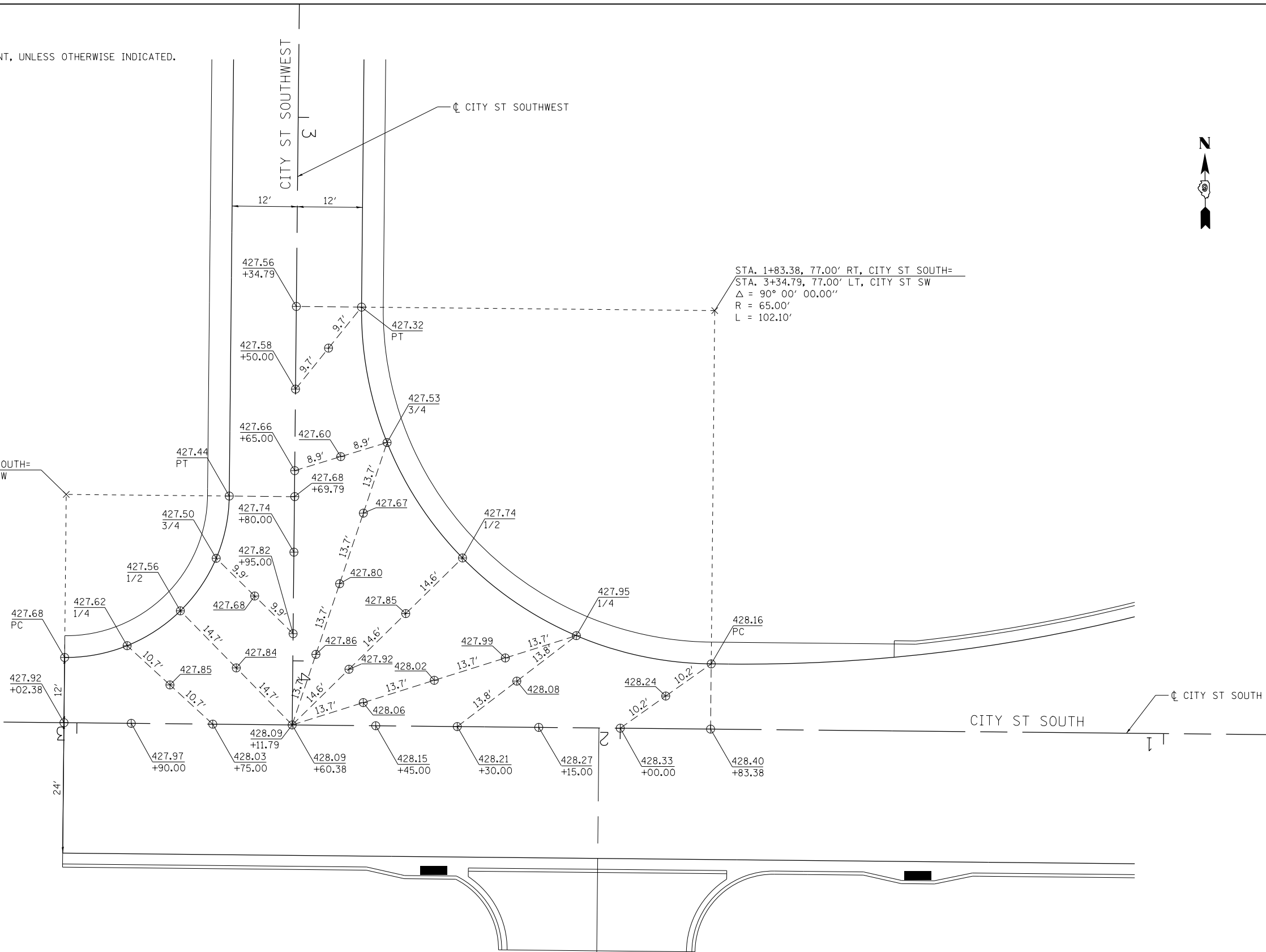
NOTES:

- ELEVATIONS GIVEN ARE AT THE EDGE OF PAVEMENT, UNLESS OTHERWISE INDICATED.

LEGEND	
⊕	SPOT ELEVATION LOCATION

STA. 3+02.38, 42.00' RT, CITY ST SOUTH=
 STA. 3+69.79, 42.00' RT, CITY ST SW
 $\Delta = 90^\circ 00' 00.00''$
 R = 30.00'
 L = 47.12'

STA. 1+83.38, 77.00' RT, CITY ST SOUTH=
 STA. 3+34.79, 77.00' LT, CITY ST SW
 $\Delta = 90^\circ 00' 00.00''$
 R = 65.00'
 L = 102.10'



FILE NAME =
 D978258-sht-intersec-06.dgn
CH2MHILL

USER NAME = mfox	DESIGNED - KN	REVISED -
	DRAWN - AS	REVISED -
PLOT SCALE = 20.0000' / in.	CHECKED -	REVISED -
PLOT DATE = 1/31/2013	DATE -	REVISED -

**STATE OF ILLINOIS
 DEPARTMENT OF TRANSPORTATION**

**INTERSECTION DETAILS
 CITY STREET SOUTH AND CITY STREET SOUTHWEST**

SCALE: SHEET NO. 6 OF 17 SHEETS STA. TO STA.

F.A.P. RTE.	SECTION	COUNTY	TOTAL SHEETS	SHEET NO.
331	(1-4)R-2, N-4, TS-4	WILLIAMSON	381	210
DRAWING NO. ID-06			CONTRACT NO. 78258	
ILLINOIS FED. AID PROJECT				