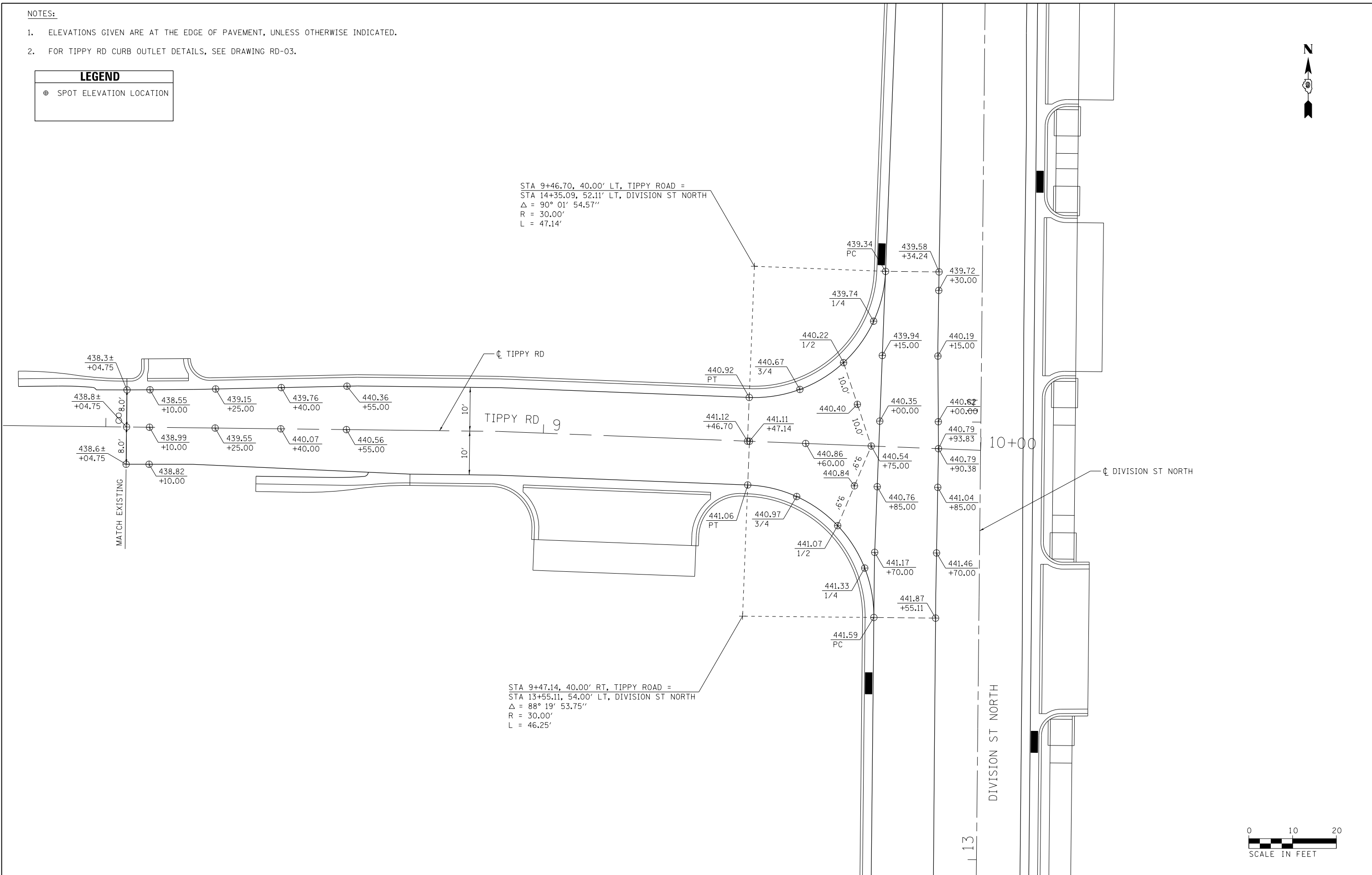


**NOTES:**

- ELEVATIONS GIVEN ARE AT THE EDGE OF PAVEMENT, UNLESS OTHERWISE INDICATED.
- FOR TIPPY RD CURB OUTLET DETAILS, SEE DRAWING RD-03.

LEGEND	
⊕	SPOT ELEVATION LOCATION



STA 9+46.70, 40.00' LT, TIPPY ROAD =  
 STA 14+35.09, 52.11' LT, DIVISION ST NORTH  
 $\Delta = 90^\circ 01' 54.57''$   
 $R = 30.00'$   
 $L = 47.14'$

STA 9+47.14, 40.00' RT, TIPPY ROAD =  
 STA 13+55.11, 54.00' LT, DIVISION ST NORTH  
 $\Delta = 88^\circ 19' 53.75''$   
 $R = 30.00'$   
 $L = 46.25'$

FILE NAME = D978258-sht-intersec-09.dgn	USER NAME = mfox	DESIGNED - KN	REVISED -
<b>CH2MHILL</b>	PLOT SCALE = 20.0000' / in.	DRAWN - AS	REVISED -
	PLOT DATE = 1/31/2013	CHECKED -	REVISED -
		DATE -	REVISED -

**STATE OF ILLINOIS  
 DEPARTMENT OF TRANSPORTATION**

<b>INTERSECTION DETAILS</b>			
<b>DIVISION STREET NORTH AND TIPPY ROAD</b>			
SCALE:	SHEET NO. 9 OF 17 SHEETS	STA.	TO STA.

F.A.P. RTE.	SECTION	COUNTY	TOTAL SHEETS	SHEET NO.
331	(1-4)R-2, N-4, TS-4	WILLIAMSON	381	213
DRAWING NO. ID-09			CONTRACT NO. 78258	
ILLINOIS FED. AID PROJECT				