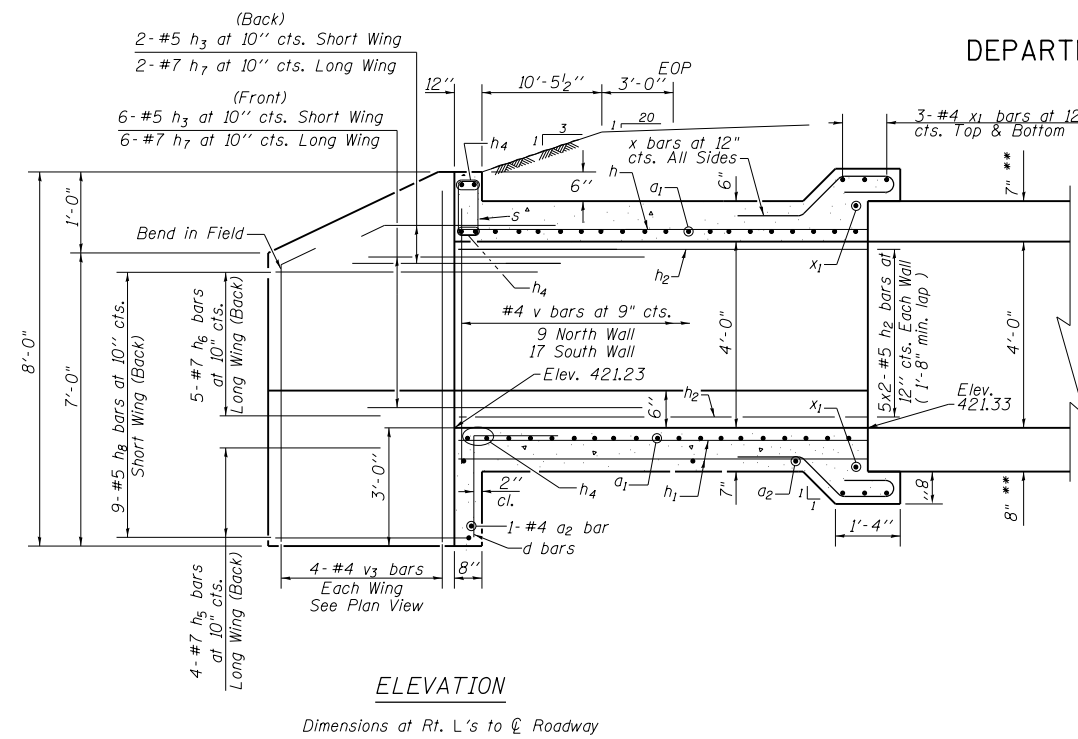
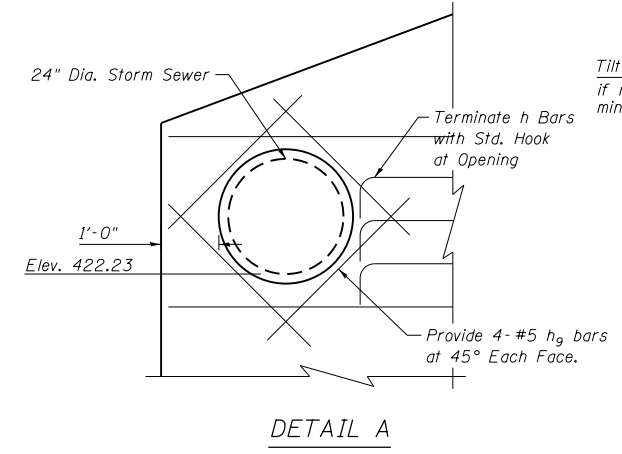


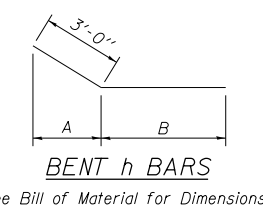
STATE OF ILLINOIS
DEPARTMENT OF TRANSPORTATION



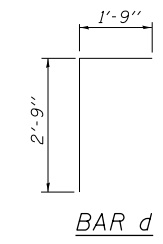
ELEVATION
Dimensions at Rt. L's to ϕ Roadway



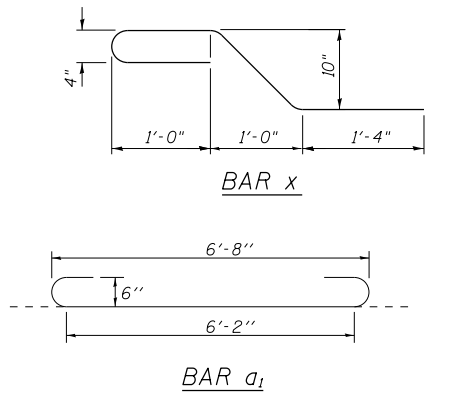
DETAIL A



BENT h BARS
See Bill of Material for Dimensions

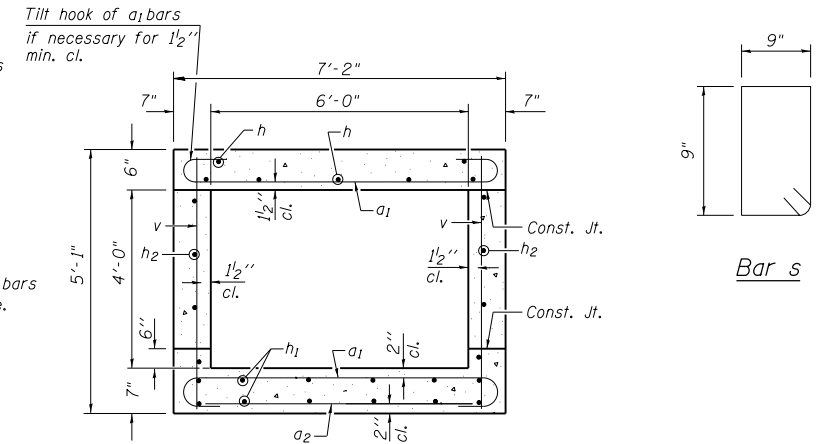


BAR d

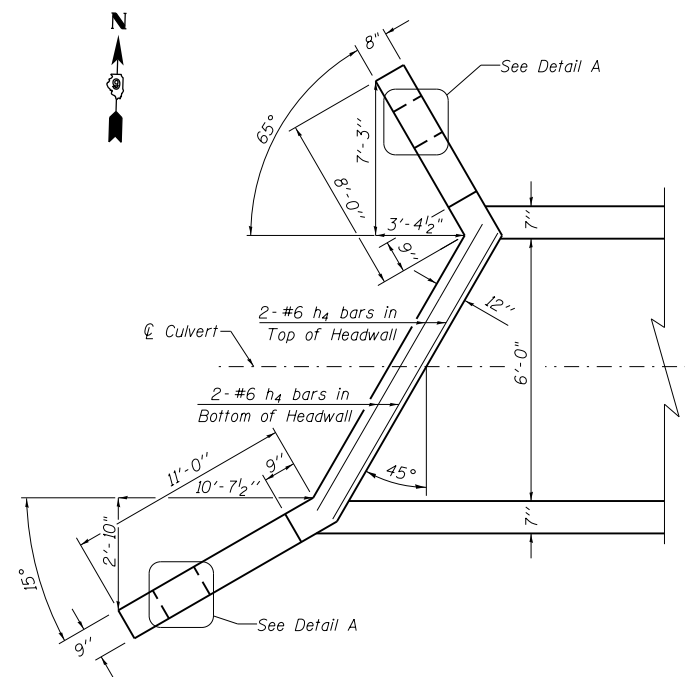


BAR x

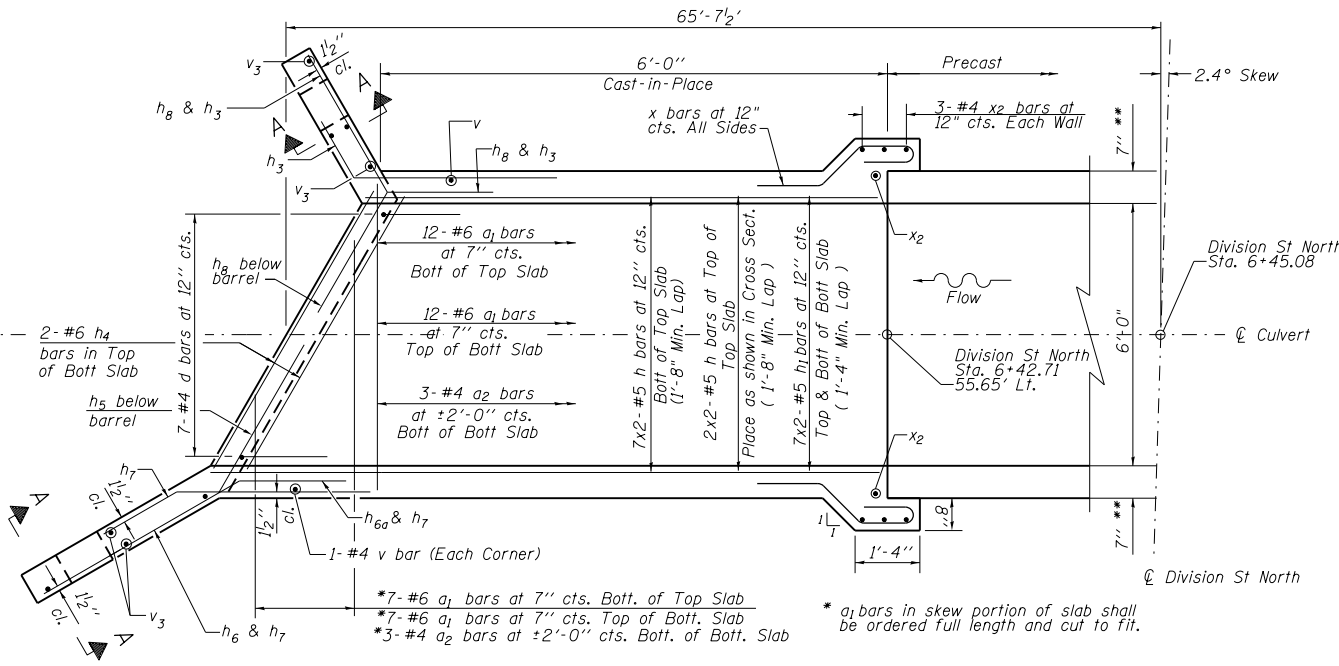
BAR a1



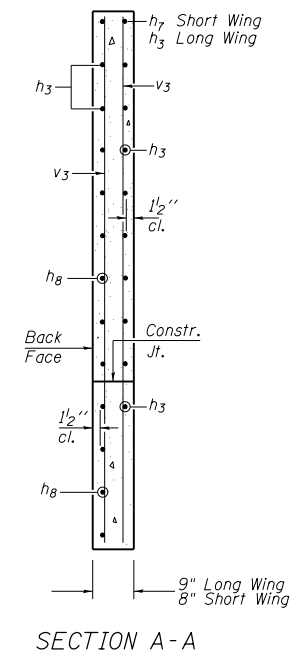
SECTION THRU BARREL



SHOWING OUTLINES



SHOWING REINFORCEMENT



SECTION A-A

BILL OF MATERIAL

Bar	No.	Size	Length	Shape	Dim's
					A B
a1	38	#6	8'-3"	U	
a2	6	#4	6'-3"	—	
d	7	#4	4'-6"	L	
h	16	#5	6'-9"	—	
h1	28	#4	6'-9"	—	
h2	10	#5	6'-9"	—	3'-2" 24'-0"
h3	10	#5	8'-0"	—	1'-3" 5'-0"
h4	6	#6	8'-6"	—	
h5	4	#7	14'-4"	—	1'-11" 11'-4"
h6	5	#7	14'-4"	—	2'-11" 11'-4"
h7	10	#7	8'-0"	—	2'-11" 5'-0"
h8	9	#5	11'-0"	—	1'-3" 8'-0"
h9	16	#5	4'-0"	—	
s	9	#4	3'-9"	□	
v	28	#4	4'-9"	—	
v3	8	#4	7'-7"	—	
x	28	#4	6'-1"	U	
x1	8	#4	8'-0"	—	
x2	8	#4	5'-0"	—	
Concrete Structures		Cu. Yd.	10.0		
Reinforcement Bars		Pound	1,975		
Box Culvert End Section, Culvert No. 2		Each	1		

DESIGN STRESSES

$f_y = 60,000$ psi
 $f'_c = 3,500$ psi

NOTES

- All work on this sheet is to be performed in accordance with Article 503 of the Standard Specifications.
- Reinforcement Bars shall conform to the requirements of AASHTO M-31, M-42 or M-53, Grade 60.
- Quantities of concrete structures and reinforcement bars are tabulated for information purposes only. All work associated with the "Box Culvert End Sections, Culvert No. 2" including, but not limited to, excavation, Concrete, Reinforcement Bars, form work, etc. will be paid for at the unit price each bid for "Box Culvert End Sections, Culvert No. 2". No additional measurements or payments will be made.
- The dimensions shown for the cast-in-place end sections are based on assumed dimensions of the precast box culvert as denoted by the **. The Contractor may be required to make minor changes in the end section dimensions if the actual box culvert dimensions differ greatly from those shown in the plans. The cost of the minor changes, both in material quantities and labor, will not be paid for separately but is included in the unit price each bid for "Box Culvert End Sections, Culvert No. 2".
- A distance of half the length of the wingwall but not less than six feet of the barrel shall be poured monolithically with the wingwalls.
- All construction joints shall be bonded.
- Bars indicated thus 12 x 4-#5 etc. indicates 12 lines of bars with 4 lengths per line.

REVISIONS	
DRAWN	2-04
REVISED	5-09 SHT CELL
REVISED	
REVISED	

BASED ON: SSB-H-0 6-1-2000

FILE NAME = D978258-sht-drain-52.dgn
CH2MHILL

USER NAME	DESIGNED	REVISIONS
mfox	DD	DD
	DD	DD
	KM	DD
		DD

STATE OF ILLINOIS
DEPARTMENT OF TRANSPORTATION

BOX CULVERT: STATION 6+45.08 (DIVISION STREET NORTH)
WEST END, 6' X 4', SKEW 2.4° LENGTH 108'-0"

SCALE: SHEET NO. 2 OF 5 SHEETS STA. TO STA.

F.A.P. RTE.	SECTION	COUNTY	TOTAL SHEETS	SHEET NO.
331	(1-41R-2, N-4, TS-4)	WILLIAMSON	381	252
DRAWING NO. CD-02			CONTRACT NO. 78258	
ILLINOIS FED. AID PROJECT				