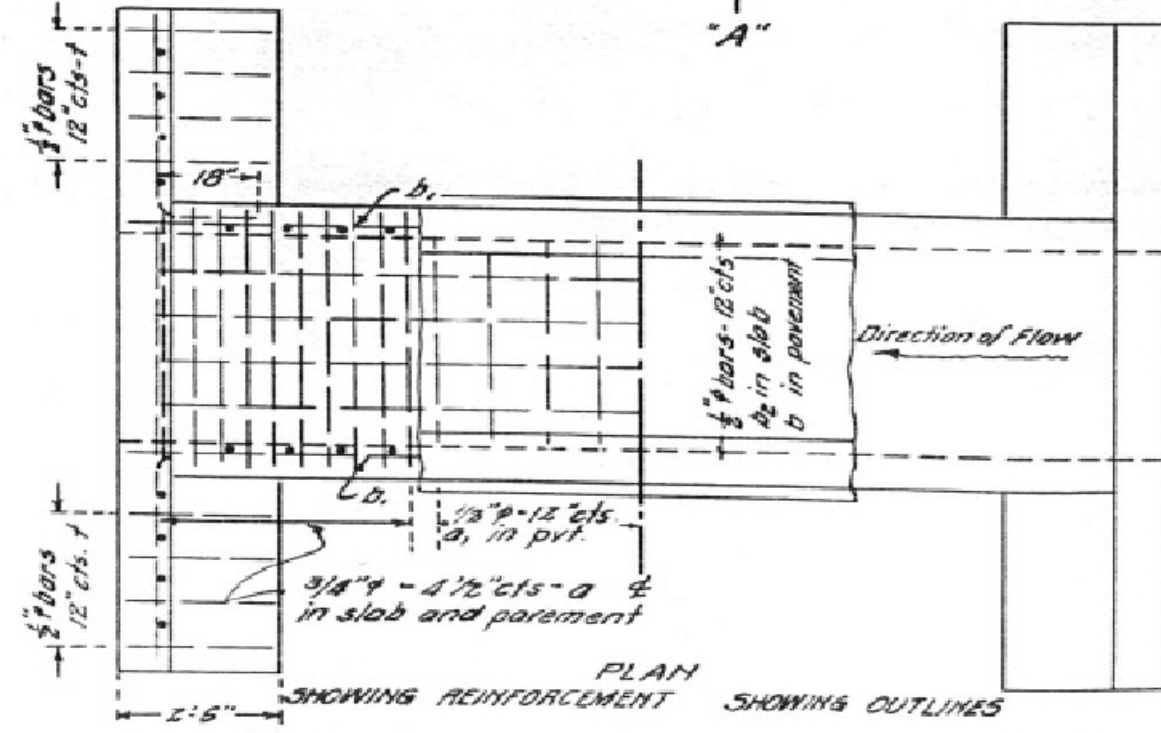
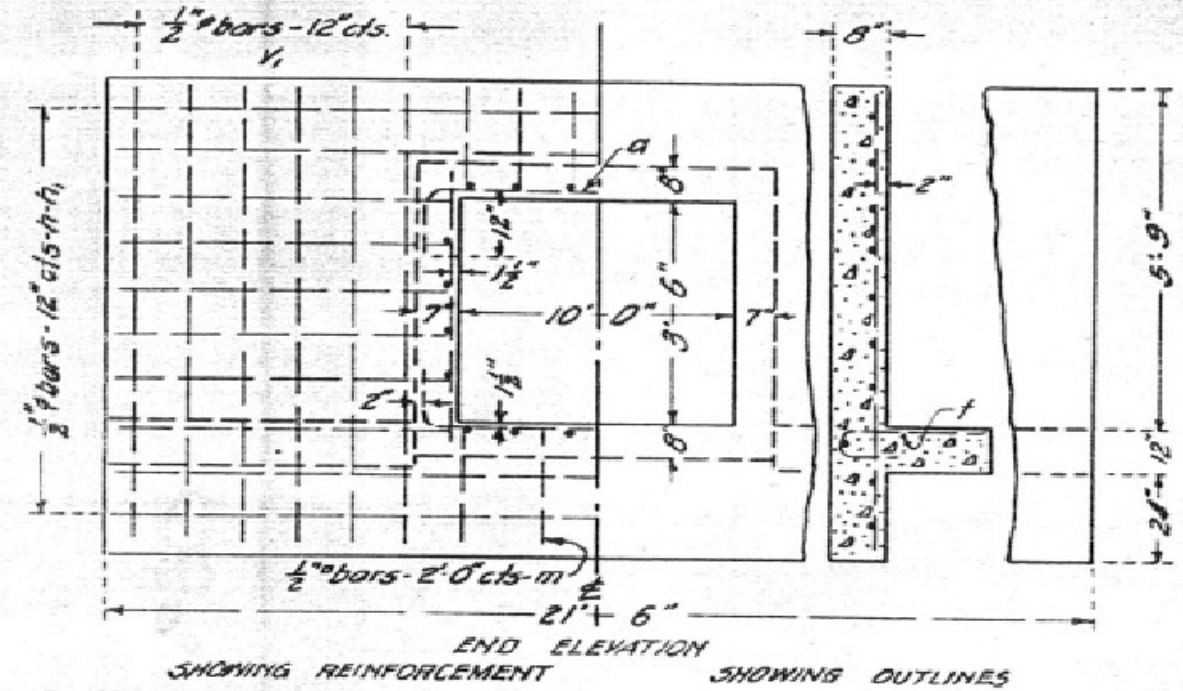
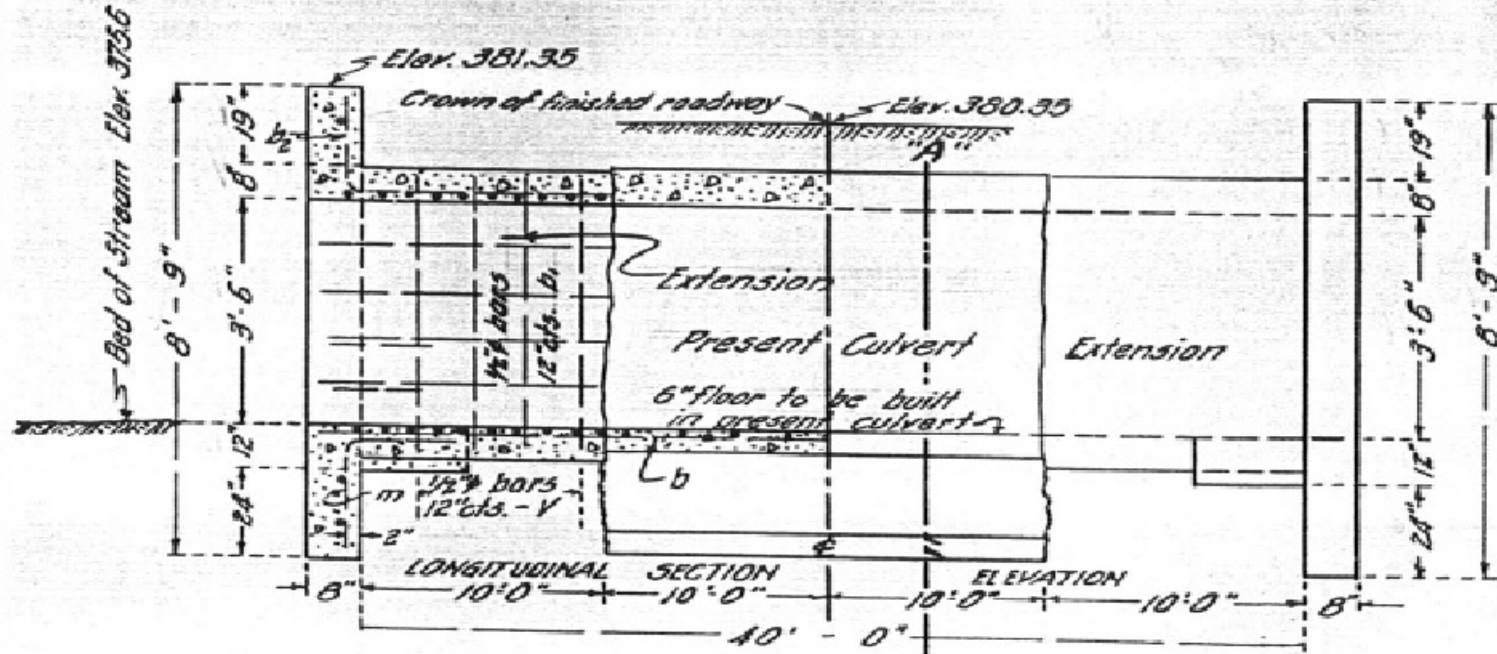


STATE OF ILLINOIS
STATE HIGHWAY DEPARTMENT
REINFORCED CONCRETE BOX CULVERT

BOND ISSUE ROUTE NO.	COUNTY	SEC.	TOTAL SHEETS	SHEET NO.
142	Hamilton	116A	46	37

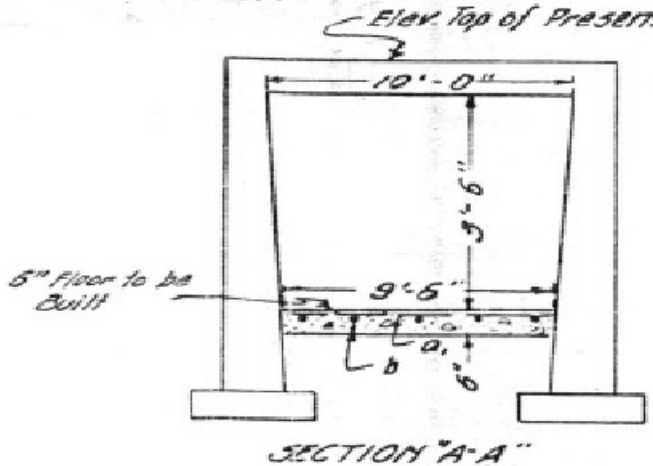


Note :- Use 3/4" bars in downstream headwall only.
Remove headwalls on old culvert.
The old concrete surface shall be removed to the coarse aggregate, swept or washed and the surfaced thoroughly wetted and flushed with a thin 1 to 2 mortar.

BILL OF MATERIAL

Bars	No.	Size	Length
V	40	1/2"	8'-6"
V ₁	24	1/2"	8'-3"
h	10	1/2"	21'-0"
h ₁	16	1/2"	7'-0"
o	114	3/8"	12'-9"
o ₁	20	1/2"	9'-3"
o ₂	22	1/2"	21'-6"
b ₁	12	1/2"	10'-6"
b ₂	22	1/2"	12'-0"
t	24	1/2"	3'-0"
m	5	1/2"	5'-0"
Steel - Lbs.			3220
Concrete - Cu. Yds.			26.5

Class "A" concrete to be used throughout
Proportions 1:2 1/2 :4



ADJUST HEIGHT OF HEAD-WALLS TO BE 12 INCHES PARALLEL TO CROWN OF PAVEMENT AT CENTER LINE.
BUILD TOPS OF HEAD-WALLS PARALLEL TO GRADE LINE.

S.B.I. RT. 142 SEC. 116A
HAMILTON COUNTY
STA. 663+75

DESIGNED BY P.F. Burch 9/13/27
DRAWN BY [Signature]
CHECKED BY [Signature]
APPROVED BY [Signature]
SPECIAL ASSEMBLED - R.M.H.
CHECKED - K.W.P.