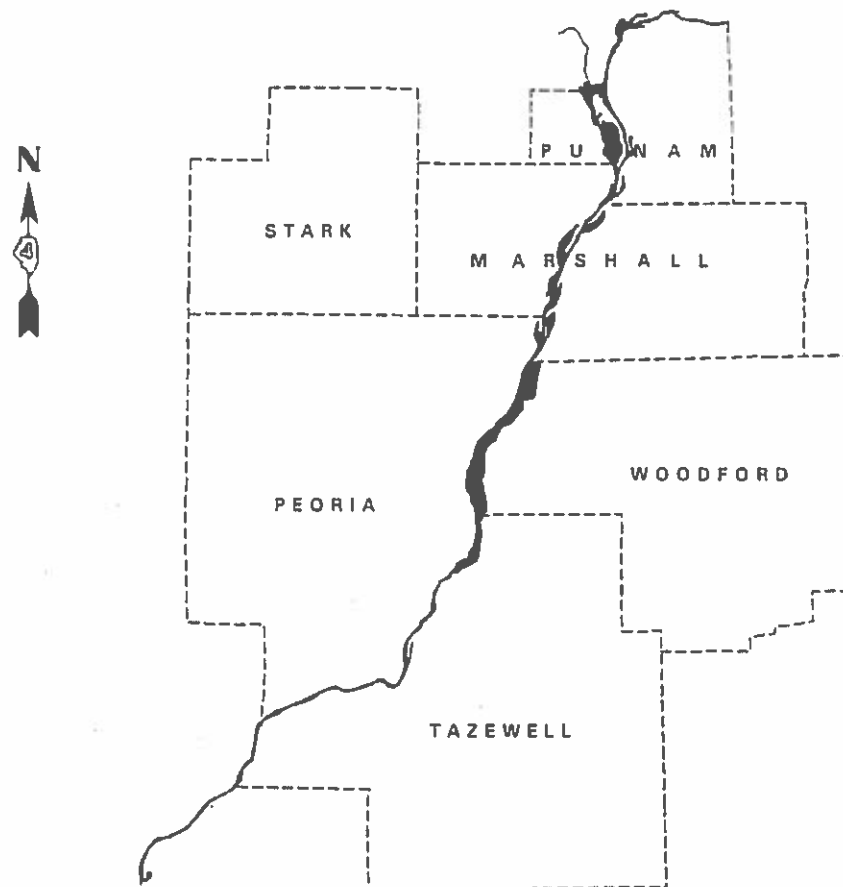


STATE OF ILLINOIS  
DEPARTMENT OF TRANSPORTATION

DIVISION OF HIGHWAYS  
**PROPOSED  
HIGHWAY PLANS**

VARIOUS ROUTES  
SECTION D4 ROUT & SEAL 2020-1  
PROJECT STP-68KL(236)  
TYPE OF IMPROVEMENT: PAVEMENT PRESERVATION  
VARIOUS COUNTIES

C-94-054-19



F.A. RTE.	SECTION	COUNTY	TOTAL SHEETS	SHEET NO.
VAR.	D4 ROUT & SEAL 2020-1-1	VARIOUS	11	1
ILLINOIS			CONTRACT NO. 68F07	

INDEX OF SHEETS:

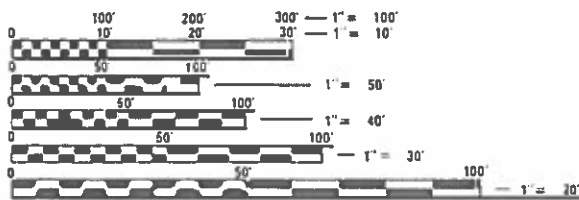
- 1 COVER SHEET
- 2 COMMITMENTS /JOB SPECIFIC NOTES
- 3 SUMMARY OF QUANTITIES
- 4 SCHEDULE OF QUANTITIES
- 5-10 LOCATION MAPS
- 11 CADD STANDARDS

HIGHWAY STANDARDS

- 701301-04
- 701306-04
- 701311-03
- 701400-09
- 701406-12
- 701501-06
- 701502-09
- 701601-09
- 701602-10
- 701901-08
- 701411-09

DISTRICT STANDARDS

- 452001



FULL SIZE PLANS HAVE BEEN PREPARED USING STANDARD ENGINEERING SCALES. REDUCED SIZED PLANS WILL NOT CONFORM TO STANDARD SCALES. IN MAKING MEASUREMENTS ON REDUCED PLANS, THE ABOVE SCALES MAY BE USED.

J.U.L.I.E.  
JOINT UTILITY LOCATION INFORMATION FOR EXCAVATION  
1-800-892-0123  
OR 811

PROJECT ENGINEER: RICH DOTSON (309) 671-3455  
PROJECT MANAGER: STACEY LONG (309) 671-3465  
CATALOG NO. 035757-00D  
CONTRACT NO. 68F07



**PROJECT DESCRIPTION**  
CRACK & JOINT SEALING ON VARIOUS ROUTES  
THROUGHOUT THE EASTERN HALF OF DISTRICT 4

STATE OF ILLINOIS  
DEPARTMENT OF TRANSPORTATION  
DIVISION OF HIGHWAYS

SUBMITTED May 15 2019  
Kenel A. Garnett  
REGION THREE ENGINEER

June 28 2019  
Paul A. Etk  
ENGINEER OF DESIGN AND ENVIRONMENT

June 28 2019  
Paul P. [Signature]  
DIRECTOR OF HIGHWAYS PROJECT IMPLEMENTATION

PRINTED BY THE AUTHORITY  
OF THE STATE OF ILLINOIS

**COMMITMENTS**

COMMITMENTS ARE NOT TO BE ALTERED WITHOUT THE WRITTEN CONSENT OF ALL PARTIES TO WHICH THE COMMITMENT WAS MADE

NO COMMITMENTS HAVE BEEN MADE FOR THIS PROJECT.

**JOB SPECIFIC NOTES**

CARE SHALL BE EXERCISED TO KEEP SEALANT OFF EXISTING PAVEMENT MARKINGS. ANY DAMAGE TO THE PAVEMENT MARKINGS SHALL BE REPAIRED BY THE CONTRACTOR AT HIS/HER OWN EXPENSE. WORK SHALL BE DONE IN ACCORDANCE TO SECTION 780 OF THE STANDARD SPECIFICATIONS AND TO THE SATISFACTION OF THE ENGINEER.

ALL DIRT AND DEBRIS CREATED BY THE ROUTING OPERATION SHALL BE CLEANED FROM THE PAVEMENT AND PAVED SHOULDERS AT THE END OF THE DAY'S OPERATIONS ACCORDING TO ARTICLE 107.15 OF THE STANDARD SPECIFICATIONS.

LOCATIONS FOR PROPOSED "CRACK ROUTING AND FILLING" ARE NUMBERED BY PRIORITY. LOCATIONS SHALL BE COMPLETED IN THIS ORDER ONLY.

AT LOCATION #3 (IL29) IN TAZEVELL COUNTY, WORK SHALL BE DONE BETWEEN THE HOURS OF 8:30 A.M. AND 3:30 P.M.

FILE NAME =	USER NAME = longsr	DESIGNED -	REVISED -	<b>STATE OF ILLINOIS DEPARTMENT OF TRANSPORTATION</b>	<b>COMMITMENTS / JOB SPECIFIC NOTES</b>	F.A. RTE.	SECTION	COUNTY	TOTAL SHEETS	SHEET NO.
pw:\planroom.dot.illinois.gov\PIDOT\Documents\IDOT Offices\District 4\Projects\D4.68F07\Drawings\CADDrawings\68F07 Pln.dgn		CHECKED -	REVISED -			VAR.	D4 ROUT & SEAL 2020-1	VARIOUS	11	2
Default	PLOT SCALE = 400.0000' / in.	DATE -	REVISED -			<b>CONTRACT NO. 68F07</b>				
	PLOT DATE = 5/9/2019	DATE -	REVISED -			SCALE:	SHEET	OF	SHEETS	STA.

CODE NO.	ITEM	UNIT	TOTAL QUANTITY	CONSTRUCTION CODE	
				80% FED	
				20% STATE	
				VAR. COUNTIES	
				0005	
67100100	MOBILIZATION	L SUM	1	1	
70102630	TRAFFIC CONTROL AND PROTECTION, STANDARD 701601	L SUM	1	1	
70100460	TRAFFIC CONTROL AND PROTECTION, STANDARD 701306	L SUM	1	1	
70100700	TRAFFIC CONTROL AND PROTECTION, STANDARD 701406	L SUM	1	1	
70100420	TRAFFIC CONTROL AND PROTECTION, STANDARD 701411	EACH	4	4	
70102620	TRAFFIC CONTROL AND PROTECTION, STANDARD 701501	L SUM	1	1	
70102622	TRAFFIC CONTROL AND PROTECTION, STANDARD 701502	L SUM	1	1	
70102632	TRAFFIC CONTROL AND PROTECTION, STANDARD 701602	L SUM	1	1	
X4510100	CRACK ROUTING AND FILLING	POUND	336978	336978	

CRACK ROUTING AND FILLING		
LOCATION		POUNDS
<b>PEORIA COUNTY</b>		
LOCATION 1	IL 40 FROM N. OF MOSSVILLE RD. TO S. OF CEDAR HILLS DR.	43204
LOCATION 2	IL 91 IN DUNLAP FROM N. OF COPPERFIELD DR. TO NORTH OF THE ROCK ISLAND TRAIL	10838
<b>TAZEWELL COUNTY</b>		
LOCATION 3	IL 29 FROM N. OF WESLEY IN EAST PEORIA TO S. OF HIGHLAND ST. IN CREVE COEUR	20720
<b>MARSHALL COUNTY</b>		
LOCATION 4	I-39 FROM 2 MILES S. OF IL 17 TO LASALLE COUNTY LINE	199920
LOCATION 5	IL 18 FROM IL 29 EAST TO THE ILLINOIS RIVER	12436
<b>WOODFORD COUNTY</b>		
LOCATION 6	IL 116 FROM IL 117 EAST TO I-39	49860
<b>TOTAL</b>		<b>336978</b>

TRAFFIC CONTROL AND PROTECTION STANDARD 701502	
LOCATION	L.SUM
JOB SITE	1
<b>TOTAL</b>	<b>1</b>

TRAFFIC CONTROL AND PROTECTION STANDARD 701602	
LOCATION	L.SUM
JOB SITE	1
<b>TOTAL</b>	<b>1</b>

MOBILIZATION	
LOCATION	L.SUM
JOB SITE	1
<b>TOTAL</b>	<b>1</b>

TRAFFIC CONTROL AND PROTECTION STANDARD 701306	
LOCATION	L.SUM
JOB SITE	1
<b>TOTAL</b>	<b>1</b>

TRAFFIC CONTROL AND PROTECTION STANDARD 701406	
LOCATION	L.SUM
JOB SITE	1
<b>TOTAL</b>	<b>1</b>

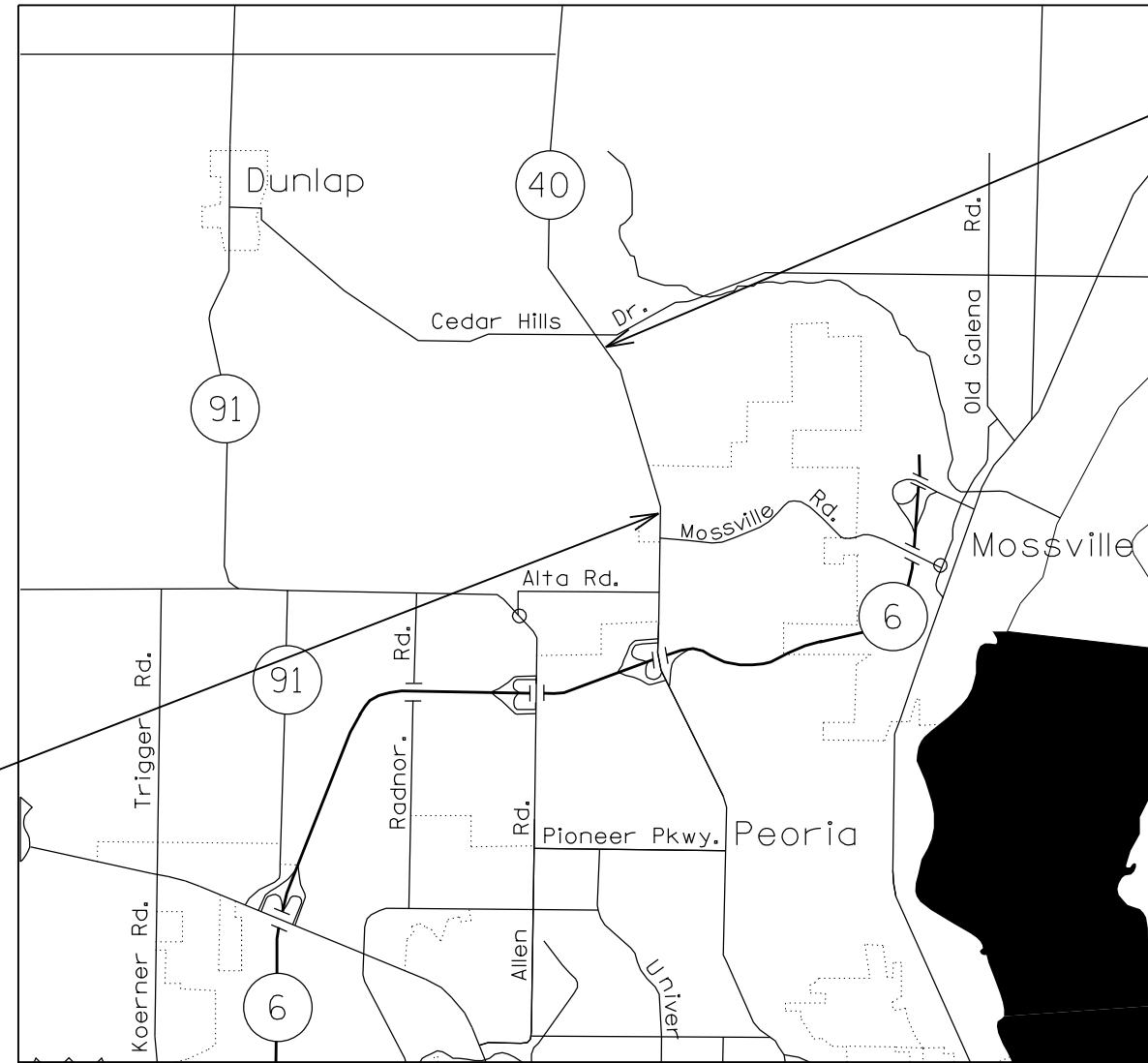
TRAFFIC CONTROL AND PROTECTION STANDARD 701411	
LOCATION	EACH
JOB SITE	4
<b>TOTAL</b>	<b>4</b>

TRAFFIC CONTROL AND PROTECTION STANDARD 701501	
LOCATION	L. SUM
JOB SITE	1
<b>TOTAL</b>	<b>1</b>

TRAFFIC CONTROL AND PROTECTION STANDARD 701601	
LOCATION	L.SUM
JOB SITE	1
<b>TOTAL</b>	<b>1</b>



**PROJECT BEGINS  
STA. 15 + 400**



**PROJECT ENDS  
STA. 17 + 960**

FILE NAME =	USER NAME = \$USER*	DESIGNED -	REVISED -
\$FILEL\$		DRAWN -	REVISED -
	PLOT SCALE = \$SCALE*	CHECKED -	REVISED -
\$MODELNAME*	PLOT DATE = \$DATE*	DATE -	REVISED -

**STATE OF ILLINOIS  
DEPARTMENT OF TRANSPORTATION**

**IL 40**

SCALE: SHEET OF SHEETS STA. TO STA.

F.A. RTE.	SECTION	COUNTY	TOTAL SHEETS	SHEET NO.
VAR.	D4 ROUT & SEAL 2020-1	VARIOUS	11	5
CONTRACT NO. 68F07			ILLINOIS FED. AID PROJECT	



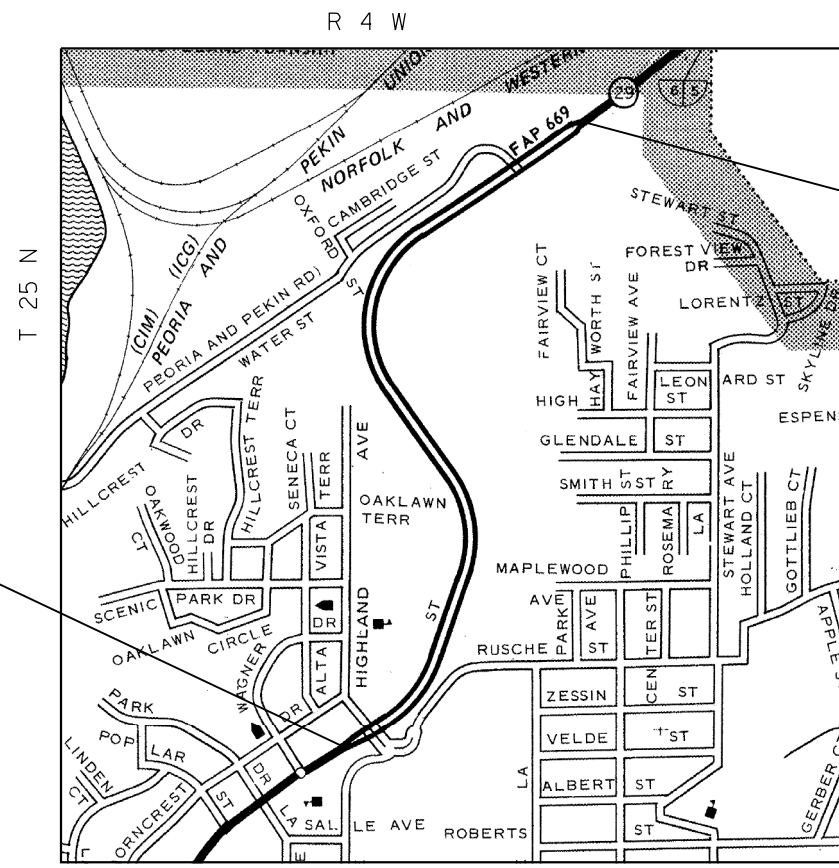
**PROJECT BEGINS  
STA. 2 + 47.00  
(LEGION HALL RD)**

**PROJECT END  
STA. 149 + 87.82**

**PROJECT ENDS  
STA. 20 + 31.95  
(LEGION HALL RD)**

**PROJECT BEGINS  
STA. 81 + 87.00**

FILE NAME =	USER NAME = \$USER*	DESIGNED -	REVISED -	<b>STATE OF ILLINOIS DEPARTMENT OF TRANSPORTATION</b>	<b>IL 91</b>			F.A. RTÉ.	SECTION	COUNTY	TOTAL SHEETS	SHEET NO.
*FILEL*		DRAWN -	REVISED -					VAR.	D4 ROUT & SEAL 2020-1	VARIOUS	11	6
*MODELNAME*		CHECKED -	REVISED -		SCALE:      SHEET    OF    SHEETS    STA.            TO STA.			CONTRACT NO. 68F07				
		DATE -	REVISED -		ILLINOIS FED. AID PROJECT							



**IMPROVEMENT BEGINS  
STA. 86 + 25**

**IMPROVEMENT ENDS  
STA. 145 + 00**

STATION EQUATION: 112 + 01.73(BK) = 111 + 92.46(AH)  
 127 + 10.06(BK) = 127 + 13.97(AH)

FILE NAME =	USER NAME = \$USER*	DESIGNED -	REVISED -
\$FILEL\$		DRAWN -	REVISED -
	PLOT SCALE = \$SCALE*	CHECKED -	REVISED -
\$MODELNAME*	PLOT DATE = \$DATE*	DATE -	REVISED -

**STATE OF ILLINOIS  
DEPARTMENT OF TRANSPORTATION**

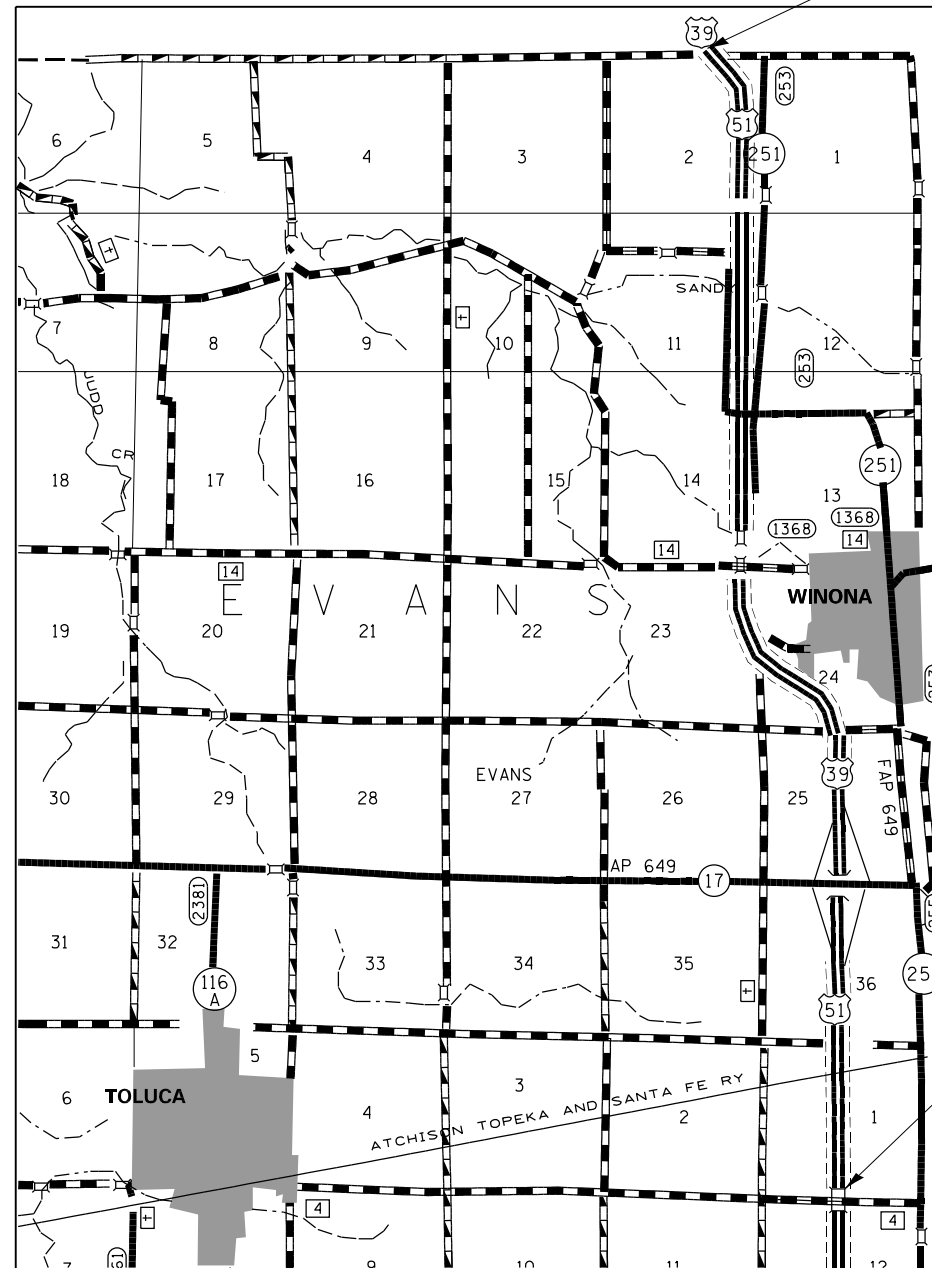
**IL 29**

SCALE: SHEET OF SHEETS STA. TO STA.

F.A. RTE.	SECTION	COUNTY	TOTAL SHEETS	SHEET NO.
VAR.	D4 ROUT & SEAL 2020-1	VARIOUS	11	7
CONTRACT NO. 68F07				
ILLINOIS FED. AID PROJECT				

PROJECT ENDS  
STA 521+25

R1W



T30N

PROJECT BEGINS  
STA 127+00

**BRIDGE OMISSIONS**

**I-39 SOUTHBOUND**

- S.N. 062-0051 - STA. 165+03 TO 167+26
- S.N. 062-0045 - STA. 394+49 TO 398+31
- S.N. 062-0042 - STA. 435+36 TO 437+64
- S.N. 062-0040 - STA. 467+39 TO 469+61

**I-39 NORTHBOUND**

- S.N. 062-0052 - STA. 164+55 TO 166+78
- S.N. 062-0046 - STA. 394+36 TO 398+05
- S.N. 062-0043 - STA. 435+36 TO 437+64
- S.N. 062-0041 - STA. 467+61 TO 469+69

FILE NAME =	USER NAME = \$USER*	DESIGNED -	REVISED -	<b>STATE OF ILLINOIS DEPARTMENT OF TRANSPORTATION</b>	<b>I-39</b>			F.A. RTE.	SECTION	COUNTY	TOTAL SHEETS	SHEET NO.
*FILEL*		DRAWN -	REVISED -					VAR.	D4 ROUT & SEAL 2020-1	VARIOUS	11	8
*MODELNAME*		CHECKED -	REVISED -		CONTRACT NO. 68F07							
	PLOT DATE = \$DATE*	DATE -	REVISED -		SCALE:	SHEET	OF	SHEETS	STA.	TO	STA.	ILLINOIS FED. AID PROJECT





PROJECT BEGINS  
STA 0+10

PROJECT ENDS  
STA 57+20



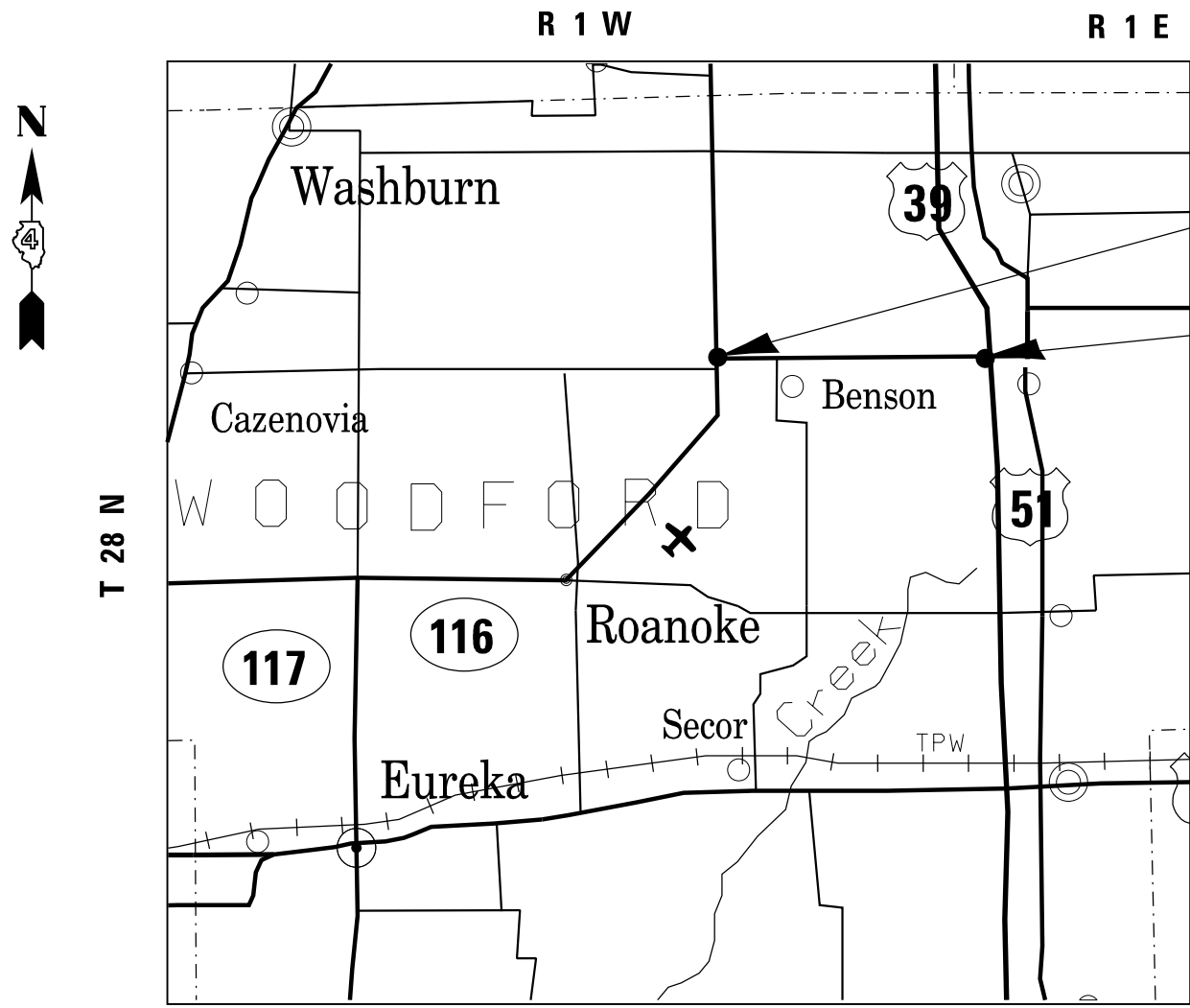
FILE NAME =	USER NAME = \$USER*	DESIGNED -	REVISED -
\$FILEL\$		DRAWN -	REVISED -
	PLOT SCALE = \$SCALE*	CHECKED -	REVISED -
\$MODELNAME*	PLOT DATE = \$DATE*	DATE -	REVISED -

**STATE OF ILLINOIS  
DEPARTMENT OF TRANSPORTATION**

**IL 18**

SCALE: SHEET OF SHEETS STA. TO STA.

F.A. RTE.	SECTION	COUNTY	TOTAL SHEETS	SHEET NO.
VAR.	D4 ROUT & SEAL 2020-1	VARIOUS	11	9
			CONTRACT NO. 68F07	
ILLINOIS FED. AID PROJECT				



**PROJECT BEGINS**  
 STA. 237 + 45 (IL 117)  
 STA. 249 + 73 (IL 117)  
 STA. 0 + 00 (IL 116)

**PROJECT ENDS**  
 STA. 275 + 62 (IL 116)

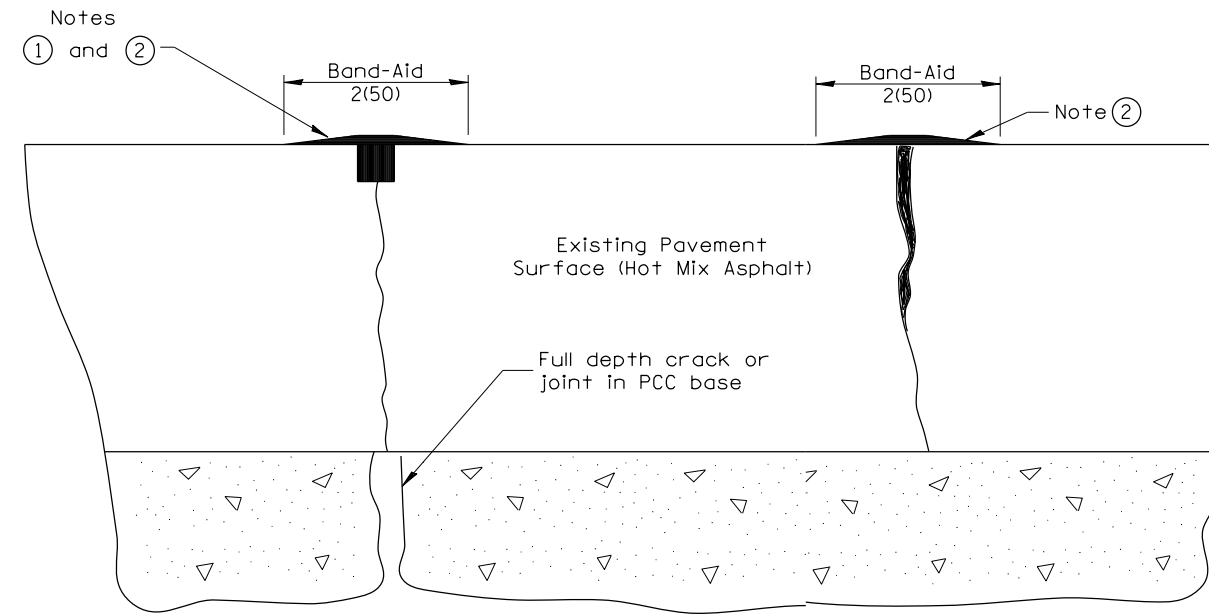
FILE NAME =	USER NAME = \$USER*	DESIGNED -	REVISED -
\$FILEL\$		DRAWN -	REVISED -
		CHECKED -	REVISED -
\$MODELNAME\$		DATE -	REVISED -

**STATE OF ILLINOIS**  
**DEPARTMENT OF TRANSPORTATION**

**IL 116**

SCALE:      SHEET    OF    SHEETS    STA.            TO STA.

F.A. RTE.	SECTION	COUNTY	TOTAL SHEETS	SHEET NO.
VAR.	D4 ROUT & SEAL 2020-1	VARIOUS	11	10
CONTRACT NO. 68F07				
ILLINOIS FED. AID PROJECT				

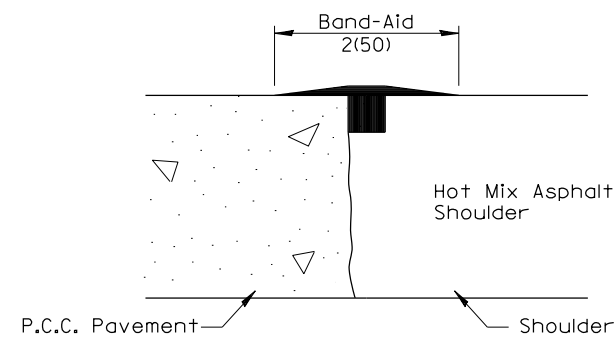


**PRIMARY TRANSVERSE,  
LONGITUDINAL CRACK &  
P.C.C. CENTERLINE JOINT**

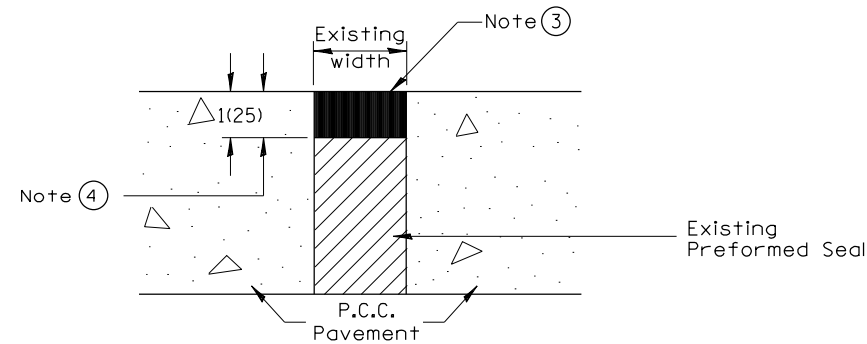
**SECONDARY  
ADJACENT CRACK**

**NOTES**

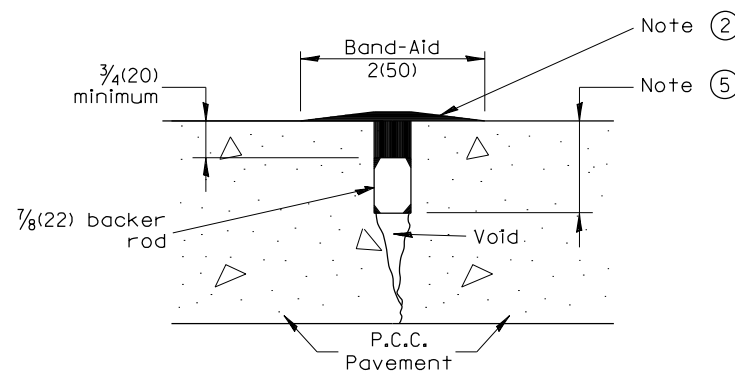
- ① Route or saw to  $\frac{3}{4}(20)$  wide by  $\frac{3}{4}(20)$  deep; (1:1 ratio).
- ② Overfill with sealant; squeeze to provide 2 (50) wide flush "band-aid" effect; feather edges flush.
- ③ Seal flush without "band-aid" effect.
- ④ Route to 1(25) depth; clean and reface walls.
- ⑤ Route or saw  $\frac{3}{4}(20)$  wide by variable depth. Depth based upon crack or joint depth and  $\frac{3}{4}(20)$  minimum sealer over backer rod.



**SHOULDER JOINT (Notes ① & ②) AND  
LONGITUDINAL RANDOM CRACK (Notes ① & ③)**



**TRANVERSE EXPANSION JOINT**



**SPECIAL TREATMENT - BACKER ROD**  
FOR JOINTS AND/OR CRACKS GREATER  
THAN  $\frac{3}{4}(20)$  DEEP  
(DOES NOT APPLY TO TRANSVERSE RANDOM CRACKS  
IN CONTINUOUSLY REINFORCED PAVEMENTS)

**GENERAL NOTES**

- 1. Crack and Joint Sealing shall conform to Section 451 and 452.
- 2. The "Band Aid" width shall be reduced or eliminated in areas adjacent to existing pavement markings.

All dimensions are in inches (millimeters) unless otherwise noted.

01-01-97	RENUM. C-36.01, NEW REVISE BOX	T.P.
05-01-97	REVISED	E.T.
10-16-06	REVISED TO 2007 SPEC.	M.A.

**STATE OF ILLINOIS  
DEPARTMENT OF TRANSPORTATION**

**CRACK AND JOINT SEALING**

NOT TO SCALE

CADD STD. 452001-D4

F.A. RTE.	SECTION	COUNTY	TOTAL SHEETS	SHEET NO.
VAR.	D4 ROUT & SEAL 2020-1	VARIOUS	11	11
CONTRACT NO. 68F07				
FED. ROAD DIST. NO. ILLINOIS FED. AID PROJECT				