

STATE OF ILLINOIS
DEPARTMENT OF TRANSPORTATION

PROPOSED
HIGHWAY PLANS

VARIOUS ROUTES
SECTION DIST 8 WEED SPRAYING 2025-1

WEED SPRAYING (JOHNSON GRASS)
VARIOUS COUNTIES

C-98-172-24

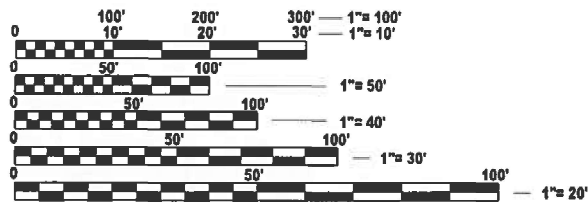
| F.A. RTE. | SECTION | COUNTY | TOTAL SHEETS | SHEET NO. |
|-----------|-----------------------------|----------|--------------------|-----------|
| VAR | DIST 8 WEED SPRAYING 2025-1 | VARIOUS | 7 | 1 |
| | | ILLINOIS | CONTRACT NO. 76U13 | |

D-98-090-24



INDEX OF SHEETS

1. COVER SHEET, INDEX OF SHEETS, MAP
2. HIGHWAY STANDARDS, SPRAY SCHEDULE, AND COMMITMENTS
3. SUMMARY OF QUANTITIES
- 4.-7. OMISSIONS/NO SPRAY SITES

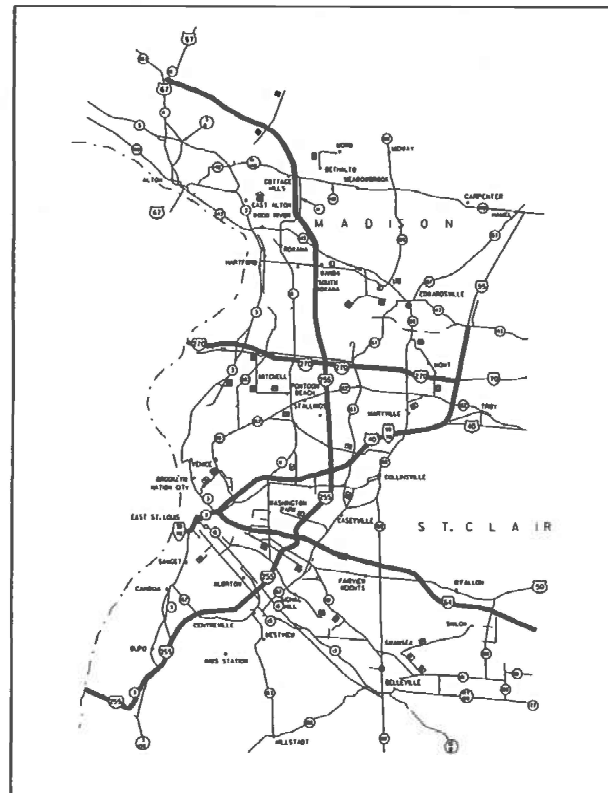


FULL SIZE PLANS HAVE BEEN PREPARED USING STANDARD ENGINEERING SCALES. REDUCED SIZED PLANS WILL NOT CONFORM TO STANDARD SCALES. IN MAKING MEASUREMENTS ON REDUCED PLANS, THE ABOVE SCALES MAY BE USED.

J.U.L.I.E.
JOINT UTILITY LOCATION INFORMATION FOR EXCAVATION
1-800-892-0123
OR 811

PROJECT ENGINEER - CHERYL KEPLAR
PROJECT MANAGER - TONI MANN

CONTRACT NO. 76U13



STATE OF ILLINOIS
DEPARTMENT OF TRANSPORTATION

SUBMITTED May 15, 2024
K. P. [Signature]
REGIONAL ENGINEER

June 28, 2024 [Signature]
ENGINEER OF DESIGN AND ENVIRONMENT

June 28, 2024 [Signature]
DIRECTOR OF HIGHWAYS PROJECT IMPLEMENTATION

PRINTED BY THE AUTHORITY
OF THE STATE OF ILLINOIS

STANDARDS
 00001-08
 001006
 701001-02
 701006-05
 701101-05
 701106-02
 701301-04
 701426-09
 701901-09

| DISTRIC 8 WEED SPRAYING 2025-1 | | | | |
|--------------------------------|---------|-------|-------|-------|
| | | | 2025 | 2026 |
| COUNTY | ROUTE | MILES | ACRES | ACRES |
| MADISON | I-55 | 30 | 90 | 90 |
| | I-55/70 | 20 | 60 | 60 |
| | I-270 | 22 | 66 | 66 |
| | I-255 | 21 | 63 | 63 |
| | IL 255 | 52 | 156 | 156 |
| | IL 3 | 20 | 60 | 60 |
| ST. CLAIR | I-64 | 26 | 78 | 78 |
| | I-255 | 35 | 105 | 105 |
| | IL 3 | 10 | 30 | 30 |
| | IL 15 | 10 | 30 | 30 |
| MONROE | I-255 | 20 | 60 | 60 |
| | IL 3 | 10 | 30 | 30 |
| MISCELLANEOUS | | | 22 | 22 |
| TOTAL | | 276 | 1700 | |

COMMITMENTS
 NONE

REV. - MS

MODEL: General notes (Sheet)
 FILE NAME: c:\p\work\p\lewis\ad0993094\0876\13-sht-gemnote.dgn

| | | |
|-------------------------|------------|-----------|
| USER NAME = Kevin.Lewis | DESIGNED - | REVISED - |
| | DRAWN - | REVISED - |
| | CHECKED - | REVISED - |
| PLOT DATE = 4/29/2024 | DATE - | REVISED - |

**STATE OF ILLINOIS
 DEPARTMENT OF TRANSPORTATION**

**HIGHWAY STANDARDS, SPRAY SCHEDULE,
 AND COMMITMENTS**

SCALE: SHEET 2 OF 6 SHEETS STA. TO STA.

| F.A. RTE. | SECTION | COUNTY | TOTAL SHEETS | SHEET NO. |
|-----------------------------|-----------------------------|---------|--------------------|-----------|
| VAR | DIST 8 WEED SPRAYING 2025-1 | VARIOUS | 7 | 2 |
| ILLINOIS FED. AID PROJECT | | | CONTRACT NO. 76U13 | |

MODEL: SOQ (Sheet)
 FILE NAME: c:\p\work\pww\lewis\kad0893094\DB76U13-sit-SOQ.dgn

| CODE NO. | ITEM | UNIT | TOTAL QUANTITY | CONSTR. CODE | |
|----------|--------------------|-------|----------------|--------------|--|
| | | | | 100% STATE | |
| | | | | NONE | |
| | | | | 0031 | |
| URBAN | | | | | |
| 67100100 | MOBILIZATION | L SUM | 1 | 1 | |
| K0012950 | HERBICIDE SPRAYING | ACRE | 1700 | 1700 | |

| | | |
|-------------------------|------------|-----------|
| USER NAME = Kevin.Lewis | DESIGNED - | REVISED - |
| | DRAWN - | REVISED - |
| | CHECKED - | REVISED - |
| PLOT DATE = 4/11/2024 | DATE - | REVISED - |

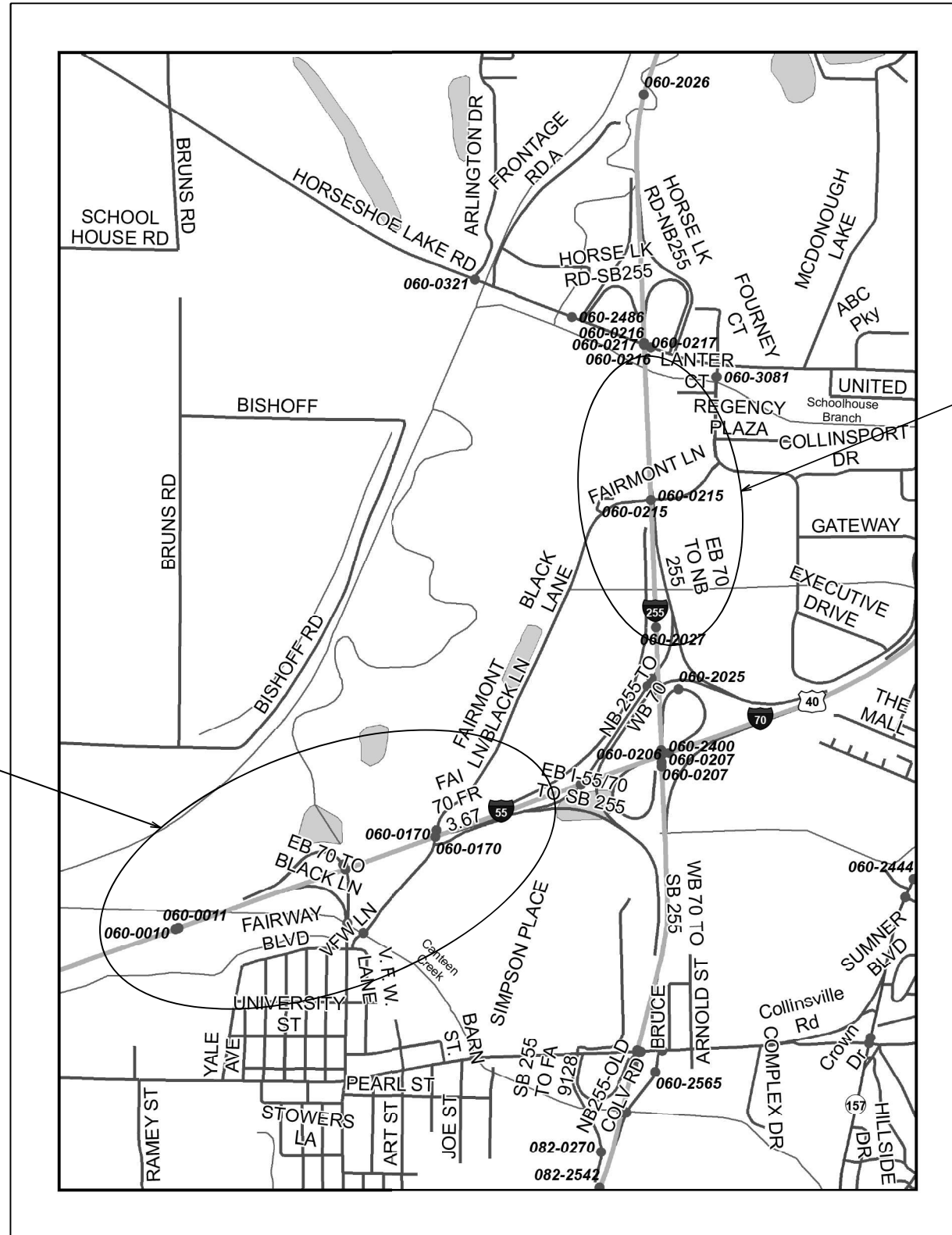
**STATE OF ILLINOIS
 DEPARTMENT OF TRANSPORTATION**

SUMMARY OF QUANTITIES

SCALE: SHEET OF 1 SHEETS STA. TO STA.

| F.A. RTE. | SECTION | COUNTY | TOTAL SHEETS | SHEET NO. |
|-----------|-----------------------------|----------|--------------------|-----------|
| VAR | DIST 8 WEED SPRAYING 2025-1 | VARIOUS | 7 | 3 |
| | | | CONTRACT NO. 76U13 | |
| | | ILLINOIS | FED. AID PROJECT | |

MODEL: plan sheet (Sheet)
 FILE NAME: c:\p\work\levi\levi\skad0893094\0876\13-shr-plan.dgn



DO NOT SPRAY

DO NOT SPRAY

MADISON COUNTY
 LEVEE LAKE
 SECTION 36, T3N-R9W

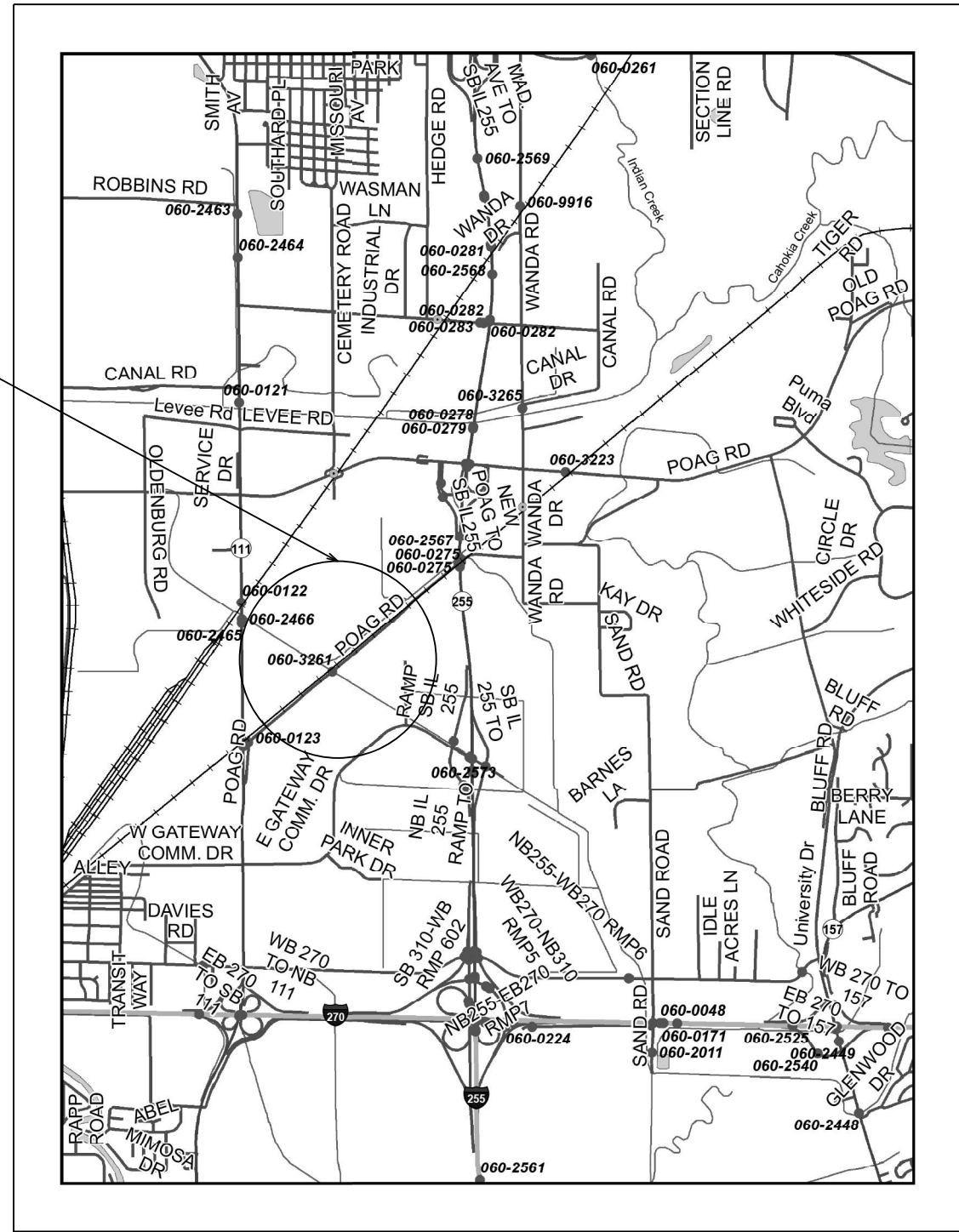
| | | |
|-------------------------|------------|-----------|
| USER NAME = Kevin.Lewis | DESIGNED - | REVISED - |
| | DRAWN - | REVISED - |
| | CHECKED - | REVISED - |
| PLOT DATE = 4/11/2024 | DATE - | REVISED - |

**STATE OF ILLINOIS
 DEPARTMENT OF TRANSPORTATION**

OMISSIONS NAMEOKI AND GRANITE TOWNSHIP

SCALE: SHEET OF 4 SHEETS STA. TO STA.

| F.A. RTE. | SECTION | COUNTY | TOTAL SHEETS | SHEET NO. |
|---------------------------|-----------------------------|---------|--------------------|-----------|
| VAR | DIST 8 WEED SPRAYING 2025-1 | VARIOUS | 7 | 4 |
| | | | CONTRACT NO. 76U13 | |
| ILLINOIS FED. AID PROJECT | | | | |



DO NOT SPRAY

MADISON COUNTY
 POAG R.R., PRAIRIE
 SECTION 24, T4N-R9W

MODEL: plan sheet2 [Sheet]
 FILE NAME: c:\pwworking\lewisakad\0893094\0876113-shr-plan.dgn

| | | |
|-------------------------|------------|-----------|
| USER NAME = Kevin.Lewis | DESIGNED - | REVISED - |
| | DRAWN - | REVISED - |
| | CHECKED - | REVISED - |
| PLOT DATE = 4/11/2024 | DATE - | REVISED - |

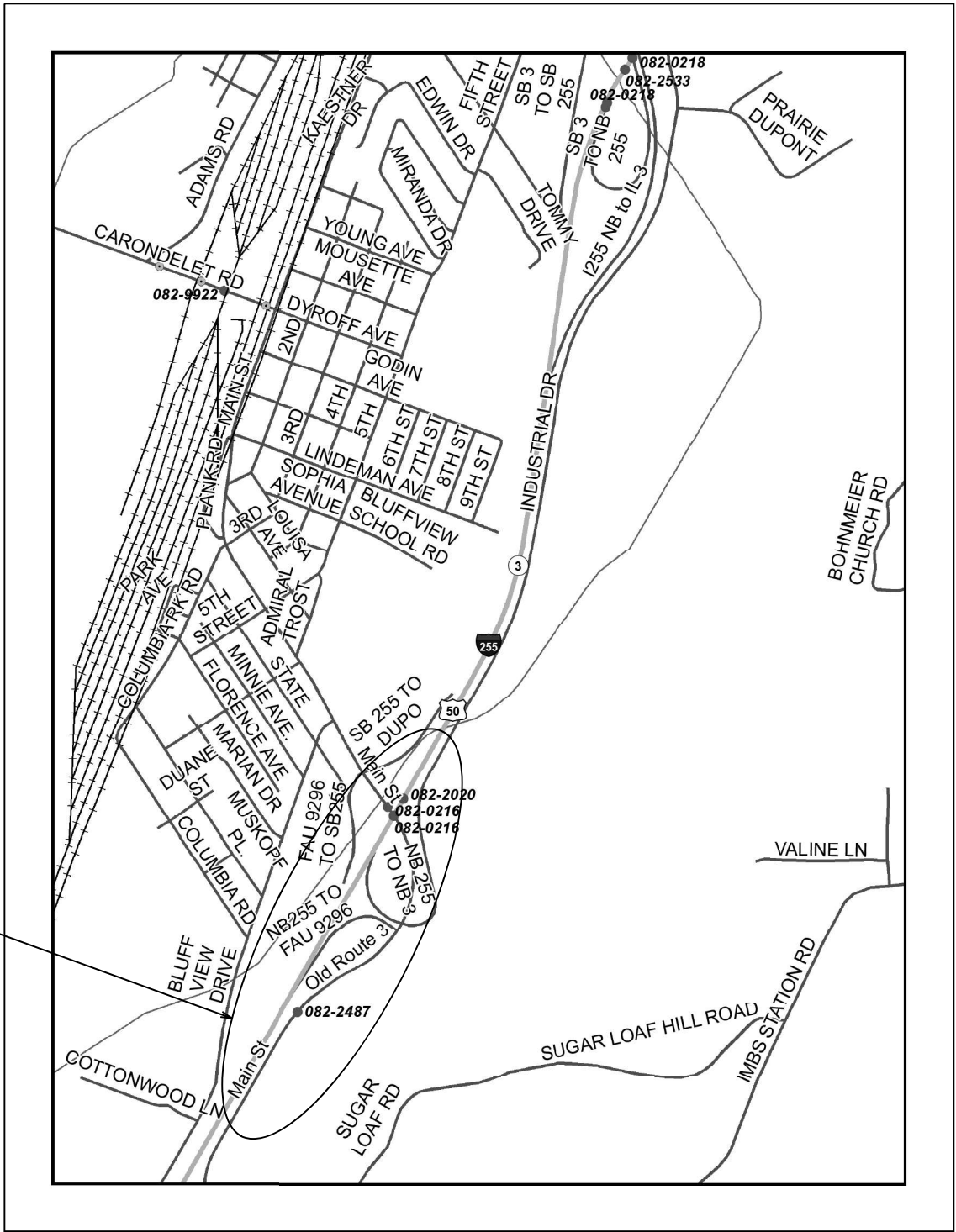
STATE OF ILLINOIS
 DEPARTMENT OF TRANSPORTATION

OMISSIONS CHOUTEA &
 GRANITE CITY TOWNSHIP

SCALE: SHEET OF 4 SHEETS STA. TO STA.

| F.A. RTE. | SECTION | COUNTY | TOTAL SHEETS | SHEET NO. |
|---------------------------|-----------------------------|---------|--------------------|-----------|
| VAR | DIST 8 WEED SPRAYING 2025-1 | VARIOUS | 7 | 5 |
| | | | CONTRACT NO. 76U13 | |
| ILLINOIS FED. AID PROJECT | | | | |

DO NOT SPRAY



ST. CLAIR COUNTY
 DUPO PRAIRE/SUGAR LOAF PRAIRIE
 SECTION 24 & 28, TIN-R10W

MODEL: plan sheet-3 [Sheet]
 FILE NAME: c:\p\work\lewis\skad0893094\0876\13-shr-clan.dgn

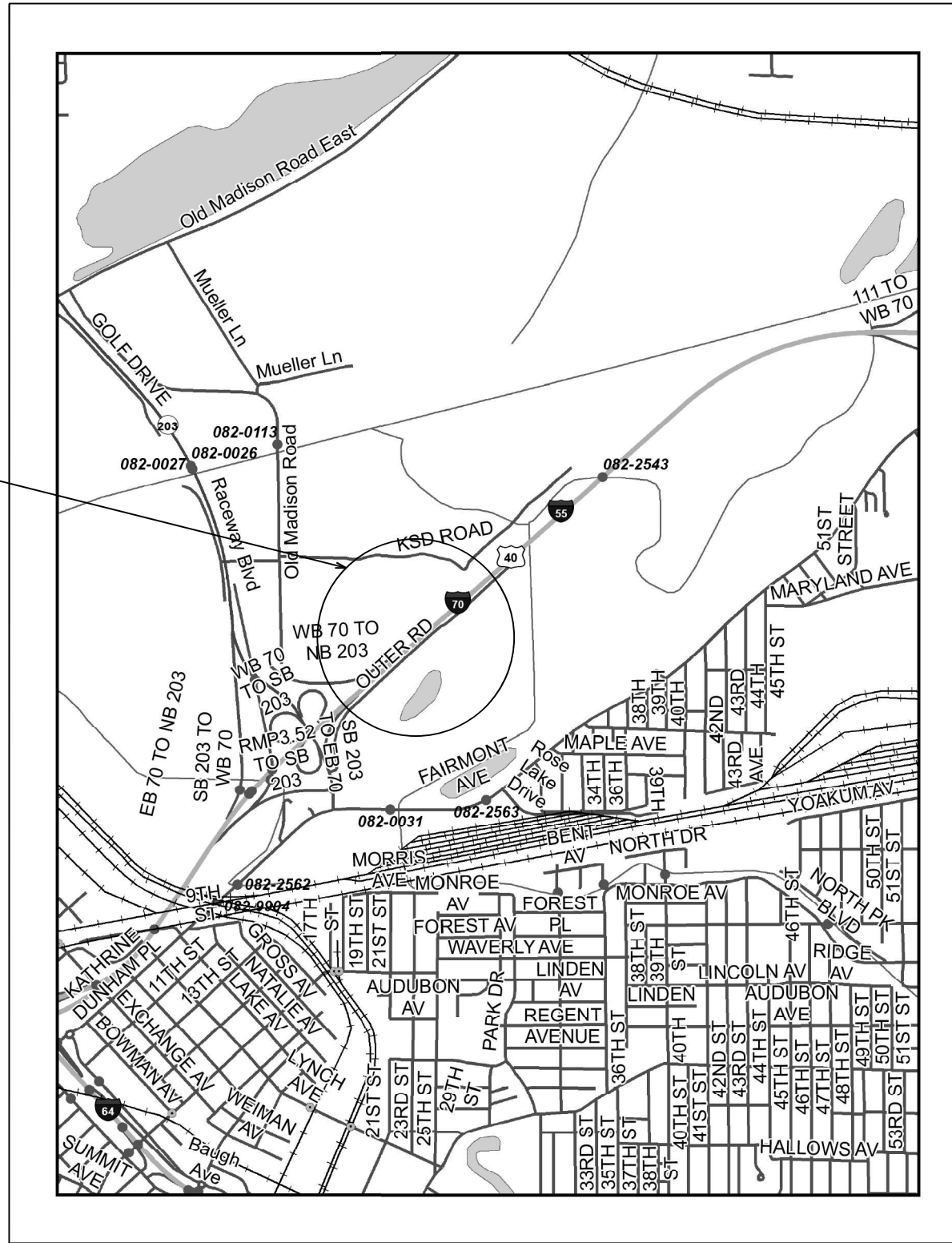
| | | |
|-------------------------|------------|-----------|
| USER NAME = Kevin.Lewis | DESIGNED - | REVISED - |
| | DRAWN - | REVISED - |
| | CHECKED - | REVISED - |
| PLOT DATE = 4/11/2024 | DATE - | REVISED - |

**STATE OF ILLINOIS
 DEPARTMENT OF TRANSPORTATION**

| | |
|----------------------------|--------------------------------|
| OMISSIONS | |
| SUGAR LOAF TOWNSHIP | |
| SCALE: | SHEET OF 4 SHEETS STA. TO STA. |

| F.A. RTE. | SECTION | COUNTY | TOTAL SHEETS | SHEET NO. |
|---------------------------|-----------------------------|---------|--------------|-----------|
| VAR | DIST 8 WEED SPRAYING 2025-1 | VARIOUS | 7 | 6 |
| CONTRACT NO. 76U13 | | | | |
| ILLINOIS FED. AID PROJECT | | | | |

DO NOT SPRAY



ST. CLAIR COUNTY
FAIRMOUNT CITY SITE
TIN-R9W

MODEL: plan sheet-4 [Sheet]
FILE NAME: c:\p\work\lewis\skad0893094\0876\13-shr-plan.dgn

| | | |
|-------------------------|------------|-----------|
| USER NAME = Kevin.Lewis | DESIGNED - | REVISED - |
| | DRAWN - | REVISED - |
| | CHECKED - | REVISED - |
| PLOT DATE = 4/11/2024 | DATE - | REVISED - |

STATE OF ILLINOIS
DEPARTMENT OF TRANSPORTATION

OMISSIONS
FAIRMOUNT CITY SITE

SCALE: SHEET OF 4 SHEETS STA. TO STA.

| F.A. RTE. | SECTION | COUNTY | TOTAL SHEETS | SHEET NO. |
|---------------------------|-----------------------------|---------|--------------------|-----------|
| VAR | DIST 8 WEED SPRAYING 2025-1 | VARIOUS | 7 | 7 |
| | | | CONTRACT NO. 76U13 | |
| ILLINOIS FED. AID PROJECT | | | | |