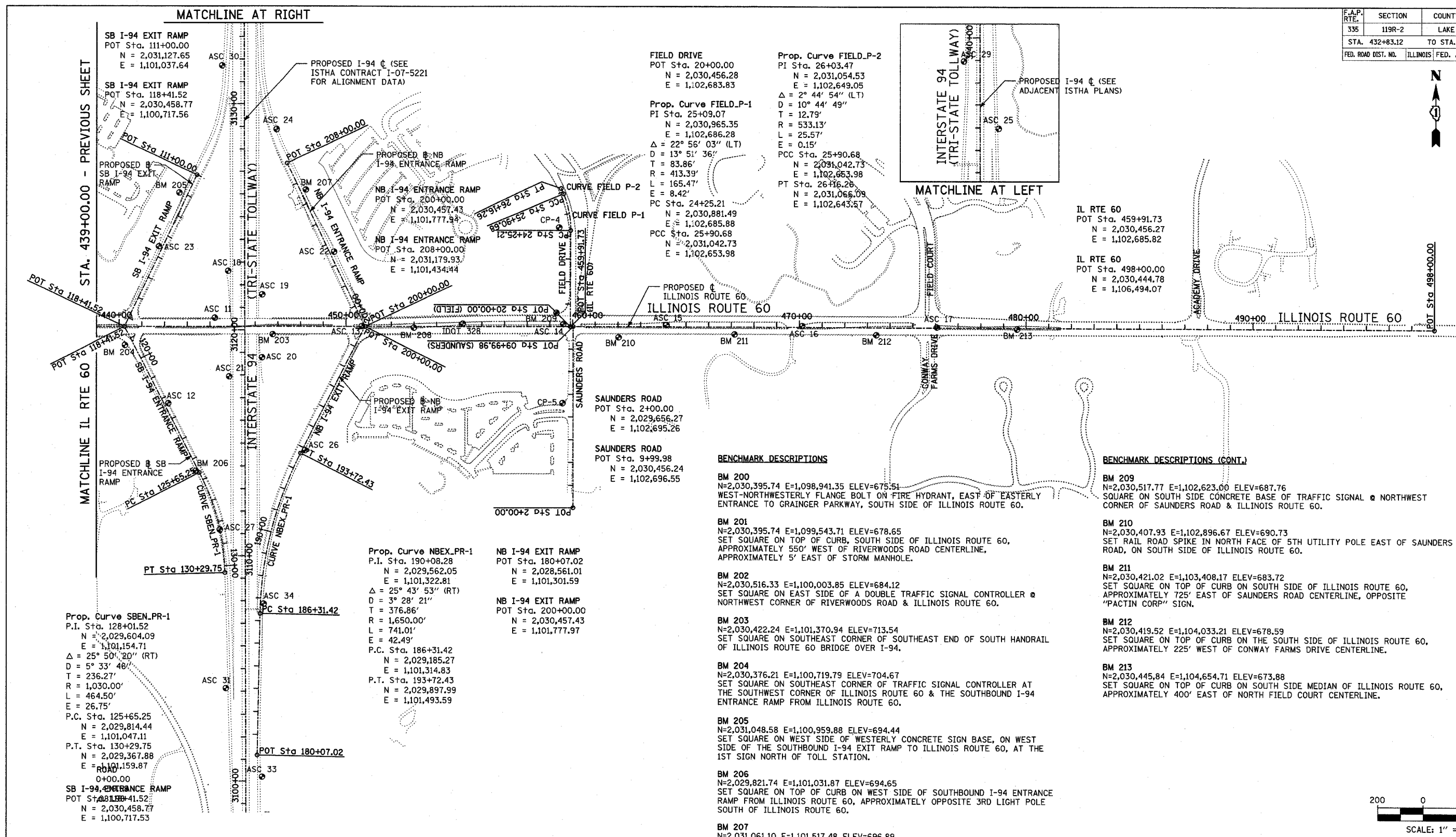


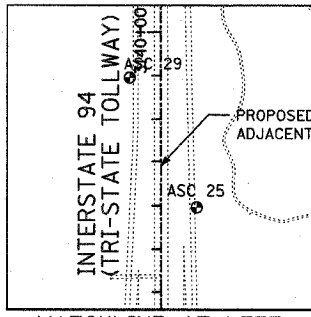
F.A.P. RTE.	SECTION	COUNTY	TOTAL SHEETS	SHEET NO.
335	119R-2	LAKE	439	38
STA. 432+83.12		TO STA. 470+56.84		
ILLINOIS FED. AID PROJECT		60B01		



FIELD DRIVE
 POT Sta. 20+00.00
 N = 2,030,456.28
 E = 1,102,683.83

Prop. Curve FIELD-P-1
 PI Sta. 25+09.07
 N = 2,030,965.35
 E = 1,102,686.28
 $\Delta = 22^\circ 56' 03''$ (LT)
 D = 13° 51' 36"
 T = 83.86'
 R = 413.39'
 L = 165.47'
 E = 8.42'
 PC Sta. 24+25.21
 N = 2,030,881.49
 E = 1,102,685.88
 PCC Sta. 25+90.68
 N = 2,031,042.73
 E = 1,102,653.98

Prop. Curve FIELD-P-2
 PI Sta. 26+03.47
 N = 2,031,054.53
 E = 1,102,649.05
 $\Delta = 2^\circ 44' 54''$ (LT)
 D = 10° 44' 49"
 T = 12.79'
 R = 533.13'
 L = 25.57'
 E = 0.15'
 PCC Sta. 25+90.68
 N = 2,031,042.73
 E = 1,102,653.98
 PT Sta. 26+16.26
 N = 2,031,066.09
 E = 1,102,643.57



IL RTE 60
 POT Sta. 459+91.73
 N = 2,030,456.27
 E = 1,102,685.82

IL RTE 60
 POT Sta. 498+00.00
 N = 2,030,444.78
 E = 1,106,494.07

SAUNDERS ROAD
 POT Sta. 2+00.00
 N = 2,029,656.27
 E = 1,102,695.26

SAUNDERS ROAD
 POT Sta. 9+99.98
 N = 2,030,456.24
 E = 1,102,696.55

BENCHMARK DESCRIPTIONS

BM 200
 N=2,030,395.74 E=1,098,941.35 ELEV=675.51
 WEST-NORTHWESTERLY FLANGE BOLT ON FIRE HYDRANT, EAST OF EASTERLY ENTRANCE TO GRAINGER PARKWAY, SOUTH SIDE OF ILLINOIS ROUTE 60.

BM 201
 N=2,030,395.74 E=1,099,543.71 ELEV=678.65
 SET SQUARE ON TOP OF CURB, SOUTH SIDE OF ILLINOIS ROUTE 60, APPROXIMATELY 550' WEST OF RIVERWOODS ROAD CENTERLINE, APPROXIMATELY 5' EAST OF STORM MANHOLE.

BM 202
 N=2,030,516.33 E=1,100,003.85 ELEV=684.12
 SET SQUARE ON EAST SIDE OF A DOUBLE TRAFFIC SIGNAL CONTROLLER @ NORTHWEST CORNER OF RIVERWOODS ROAD & ILLINOIS ROUTE 60.

BM 203
 N=2,030,422.24 E=1,101,370.94 ELEV=713.54
 SET SQUARE ON SOUTHEAST CORNER OF SOUTHEAST END OF SOUTH HANDRAIL OF ILLINOIS ROUTE 60 BRIDGE OVER I-94.

BM 204
 N=2,030,376.21 E=1,100,719.79 ELEV=704.67
 SET SQUARE ON SOUTHEAST CORNER OF TRAFFIC SIGNAL CONTROLLER AT THE SOUTHWEST CORNER OF ILLINOIS ROUTE 60 & THE SOUTHBOUND I-94 ENTRANCE RAMP FROM ILLINOIS ROUTE 60.

BM 205
 N=2,031,048.58 E=1,100,959.88 ELEV=694.44
 SET SQUARE ON WEST SIDE OF WESTERLY CONCRETE SIGN BASE, ON WEST SIDE OF THE SOUTHBOUND I-94 EXIT RAMP TO ILLINOIS ROUTE 60, AT THE 1ST SIGN NORTH OF TOLL STATION.

BM 206
 N=2,029,821.74 E=1,101,031.87 ELEV=694.65
 SET SQUARE ON TOP OF CURB ON WEST SIDE OF SOUTHBOUND I-94 ENTRANCE RAMP FROM ILLINOIS ROUTE 60, APPROXIMATELY OPPOSITE 3RD LIGHT POLE SOUTH OF ILLINOIS ROUTE 60.

BENCHMARK DESCRIPTIONS (CONT.)

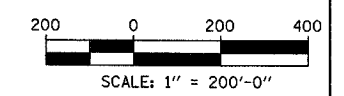
BM 209
 N=2,030,517.77 E=1,102,623.00 ELEV=687.76
 SQUARE ON SOUTH SIDE CONCRETE BASE OF TRAFFIC SIGNAL @ NORTHWEST CORNER OF SAUNDERS ROAD & ILLINOIS ROUTE 60.

BM 210
 N=2,030,407.93 E=1,102,896.67 ELEV=690.73
 SET RAIL ROAD SPIKE IN NORTH FACE OF 5TH UTILITY POLE EAST OF SAUNDERS ROAD, ON SOUTH SIDE OF ILLINOIS ROUTE 60.

BM 211
 N=2,030,421.02 E=1,103,408.17 ELEV=683.72
 SET SQUARE ON TOP OF CURB ON SOUTH SIDE OF ILLINOIS ROUTE 60, APPROXIMATELY 725' EAST OF SAUNDERS ROAD CENTERLINE, OPPOSITE "PACTIN CORP" SIGN.

BM 212
 N=2,030,419.52 E=1,104,033.21 ELEV=678.59
 SET SQUARE ON TOP OF CURB ON THE SOUTH SIDE OF ILLINOIS ROUTE 60, APPROXIMATELY 225' WEST OF CONWAY FARMS DRIVE CENTERLINE.

BM 213
 N=2,030,445.84 E=1,104,654.71 ELEV=673.88
 SET SQUARE ON TOP OF CURB ON SOUTH SIDE MEDIAN OF ILLINOIS ROUTE 60, APPROXIMATELY 400' EAST OF NORTH FIELD COURT CENTERLINE.



REVISIONS	
NAME	DATE

ILLINOIS DEPARTMENT OF TRANSPORTATION
 ILLINOIS RTE 60 OVER I-94
 ALIGNMENT AND TIES
 SHEET 2 OF 2

SCALE: 1"=200'-0"
 DATE: MAY 8, 2007

DRAWN BY: ASC
 CHECKED BY: MPG

TYLIN INTERNATIONAL

8-12-15-AU
5/17/2007