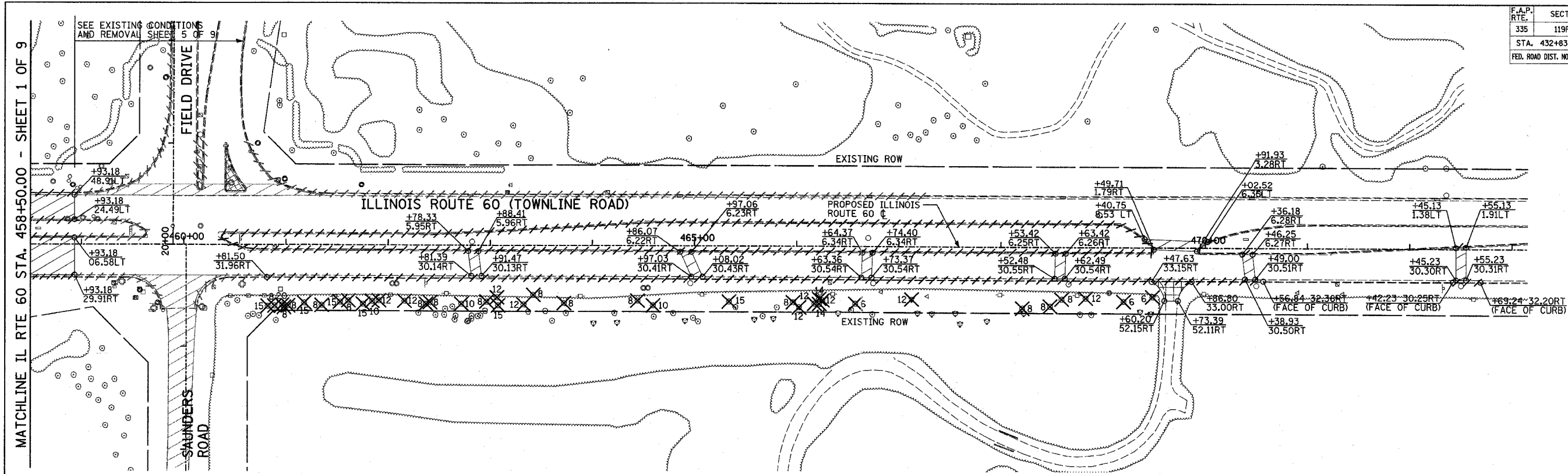
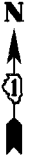


F.A.P. RTE.	SECTION	COUNTY	TOTAL SHEETS	SHEET NO.
335	119R-2	LAKE	439	47
STA. 432+83.12		TO STA. 470+56.84		
FED. ROAD DIST. NO.	ILLINOIS	FED. AID PROJECT		

60B01

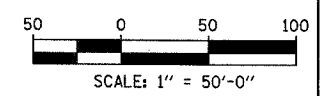
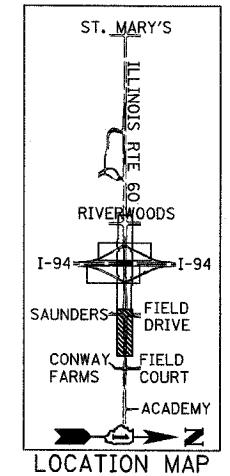


**REMOVAL LEGEND:**

- PAVEMENT REMOVAL
- PAVED SHOULDER REMOVAL
- BITUMINOUS SURFACE REMOVAL, 2 3/4"
- MEDIAN REMOVAL
- DRIVEWAY PAVEMENT REMOVAL
- COMB CONC CURB & GUTTER REMOVAL
- GUARDRAIL REMOVAL
- CHAIN LINK FENCE REMOVAL
- LIGHT POLE FOUNDATION REMOVAL (SEE ROADWAY LIGHTING & SURVEILLANCE PLANS)
- TREE REMOVAL (UNITS) (NO UNIT SHOWN = <6)

**PLAN NOTES:**

- ALL STATION/OFFSET/RADIUS CALLOUTS MEASURED TO EDGE OF PAVEMENT UNLESS OTHERWISE NOTED.



**TYLIN** INTERNATIONAL

REVISIONS	
NAME	DATE

ILLINOIS DEPARTMENT OF TRANSPORTATION  
 ILLINOIS RTE 60 OVER I-94  
 EXISTING CONDITIONS AND REMOVAL PLAN  
 IL RTE 60 STA. 458+50.00 TO 470+56.84  
 SHEET 2 OF 9

SCALE: 1"=50'-0"  
 DATE: MAY 8, 2007

DRAWN BY: CBS  
 CHECKED BY: MPG

P:\60245811-60N\road\60rem\_sfr02.dwg 5/7/2007 8:43:11 AM