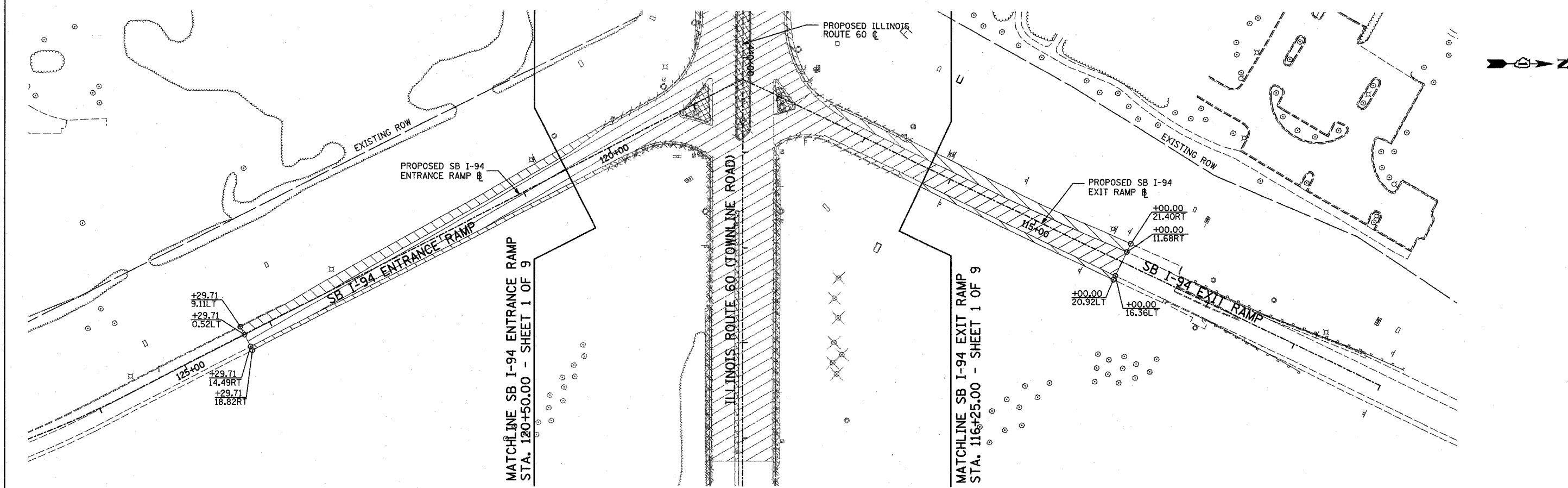


F.A.P. RTE.	SECTION	COUNTY	TOTAL SHEETS	SHEET NO.
335	119R-2	LAKE	439	48
STA. 432+83.12		TO STA. 470+56.84		
FED. ROAD DIST. NO.		ILLINOIS	FED. AID PROJECT	

60B01



MATCHLINE SB I-94 ENTRANCE RAMP
STA. 120+50.00 - SHEET 1 OF 9

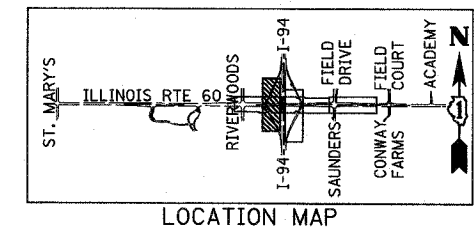
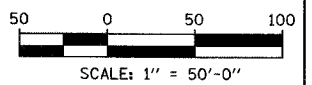
MATCHLINE SB I-94 EXIT RAMP
STA. 116+25.00 - SHEET 1 OF 9

REMOVAL LEGEND:

- PAVEMENT REMOVAL
- PAVED SHOULDER REMOVAL
- BITUMINOUS SURFACE REMOVAL, 2 3/4"
- MEDIAN REMOVAL
- DRIVEWAY PAVEMENT REMOVAL
- COMB CONC CURB & GUTTER REMOVAL
- GUARDRAIL REMOVAL
- CHAIN LINK FENCE REMOVAL
- LIGHT POLE FOUNDATION REMOVAL (SEE ROADWAY LIGHTING & SURVEILLANCE PLANS)
- TREE REMOVAL (UNITS) (NO UNIT SHOWN = <6)

PLAN NOTES:

- ALL STATION/OFFSET/RADIUS CALLOUTS MEASURED TO EDGE OF PAVEMENT UNLESS OTHERWISE NOTED.



REVISIONS	
NAME	DATE

ILLINOIS DEPARTMENT OF TRANSPORTATION
ILLINOIS RTE 60 OVER I-94
EXISTING CONDITIONS AND REMOVAL PLAN
SOUTHBOUND INTERSTATE 94 RAMPS
SHEET 3 OF 9

SCALE: 1"=50'-0"
DATE: MAY 8, 2007

DRAWN BY: CBS
CHECKED BY: MPG

TYLIN INTERNATIONAL

P:\60245811\60N\road\60rem_sht03.dgn 5/7/2007 8:43:21 AM