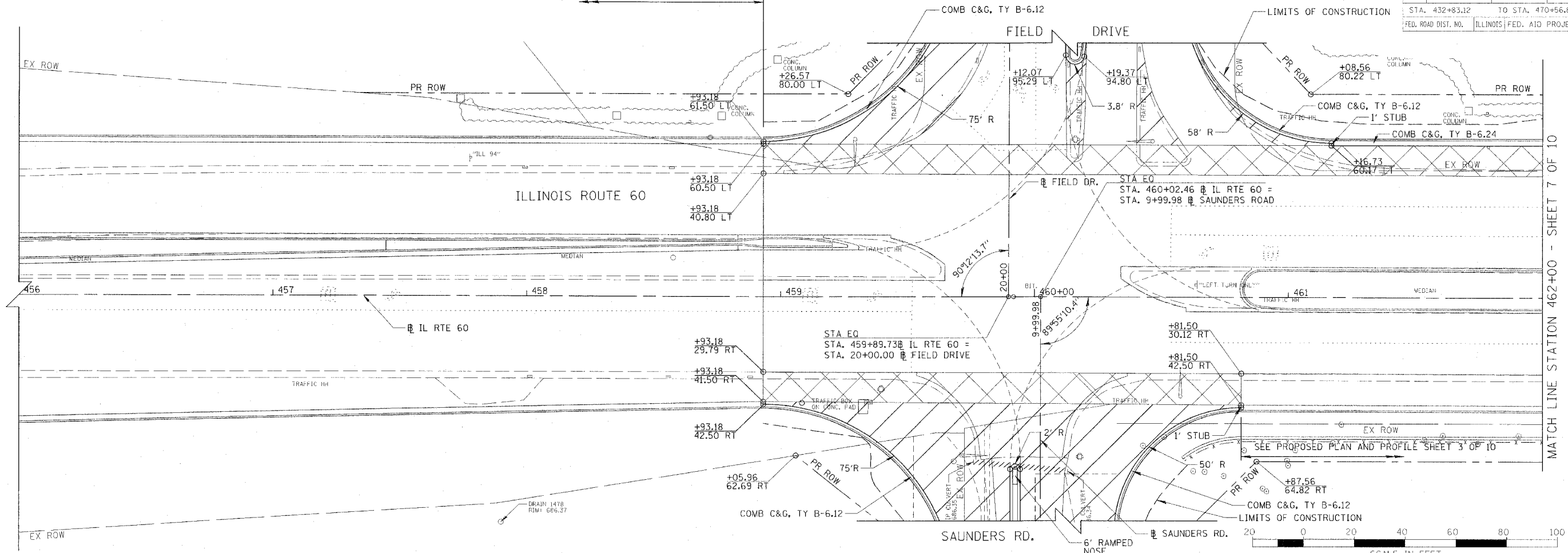
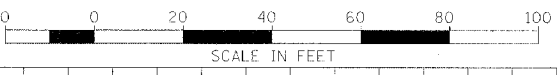


F.A.P. R.T.E.	SECTION	COUNTY	TOTAL SHEETS	SHEET NO.
335	119R-2	LAKE	439	60
STA. 432+83.12 TO STA. 470+56.84				
FED. ROAD DIST. NO.			ILLINOIS FED. AID PROJECT	

SEE PROPOSED PLAN AND PROFILE SHEET 3 OF 10

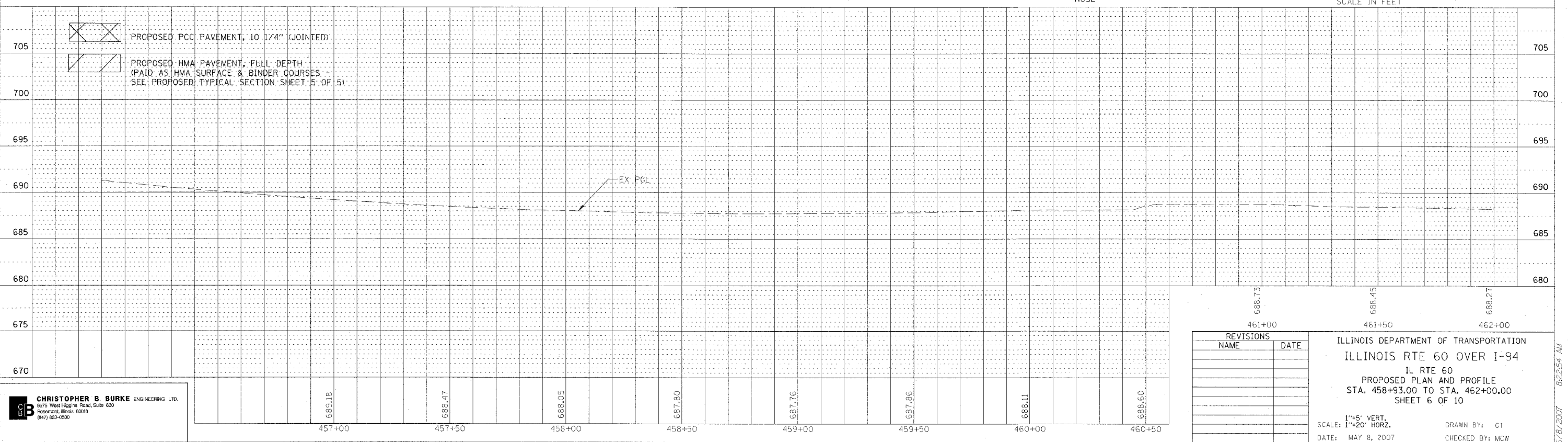


MATCH LINE STATION 462+00 - SHEET 7 OF 10



PLAN	DATE	BY
REVISIONS		
NO. 1		

PROFILE	DATE	BY
REVISIONS		
NO. 1		



REVISIONS	
NAME	DATE

ILLINOIS DEPARTMENT OF TRANSPORTATION
ILLINOIS RTE 60 OVER I-94
 IL RTE 60
 PROPOSED PLAN AND PROFILE
 STA. 458+93.00 TO STA. 462+00.00
 SHEET 6 OF 10

1"=5' VERT.
 1"=20' HORIZ.
 DATE: MAY 8, 2007
 DRAWN BY: G1
 CHECKED BY: MCW

CB CHRISTOPHER B. BURKE ENGINEERING LTD.
 678 West Higgins Road, Suite 600
 Rosemont, Illinois 60018
 (847) 823-0500

6/8/2007 8:22:54 AM