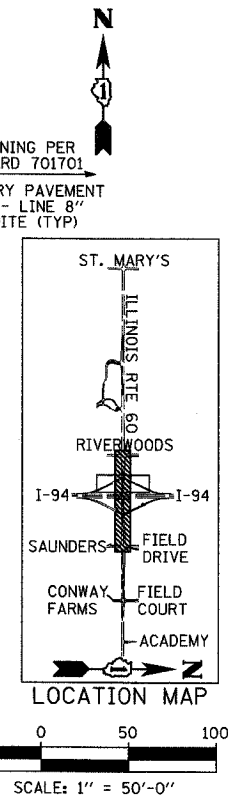
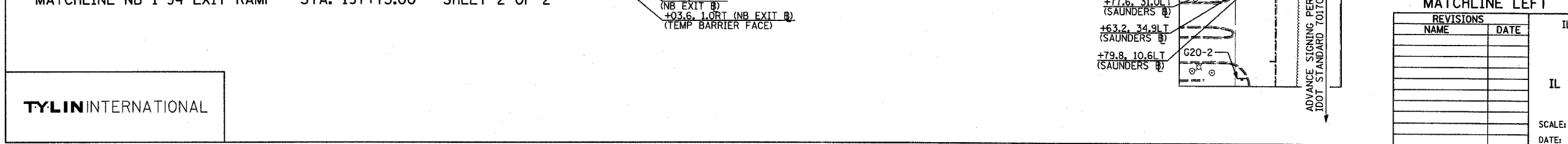
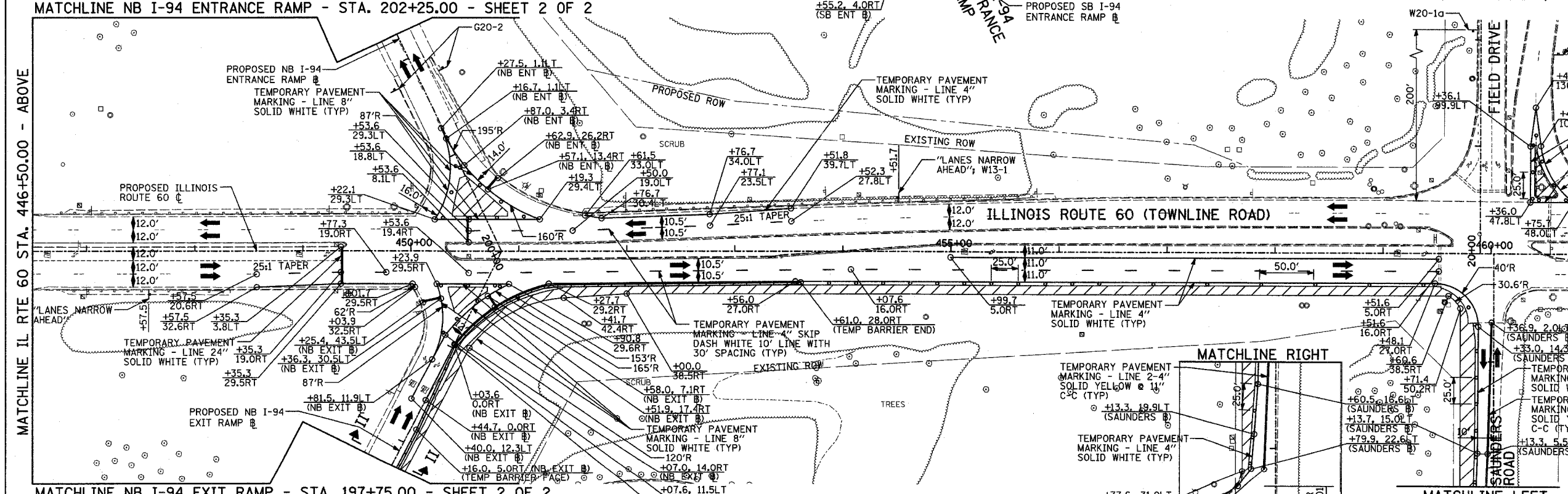
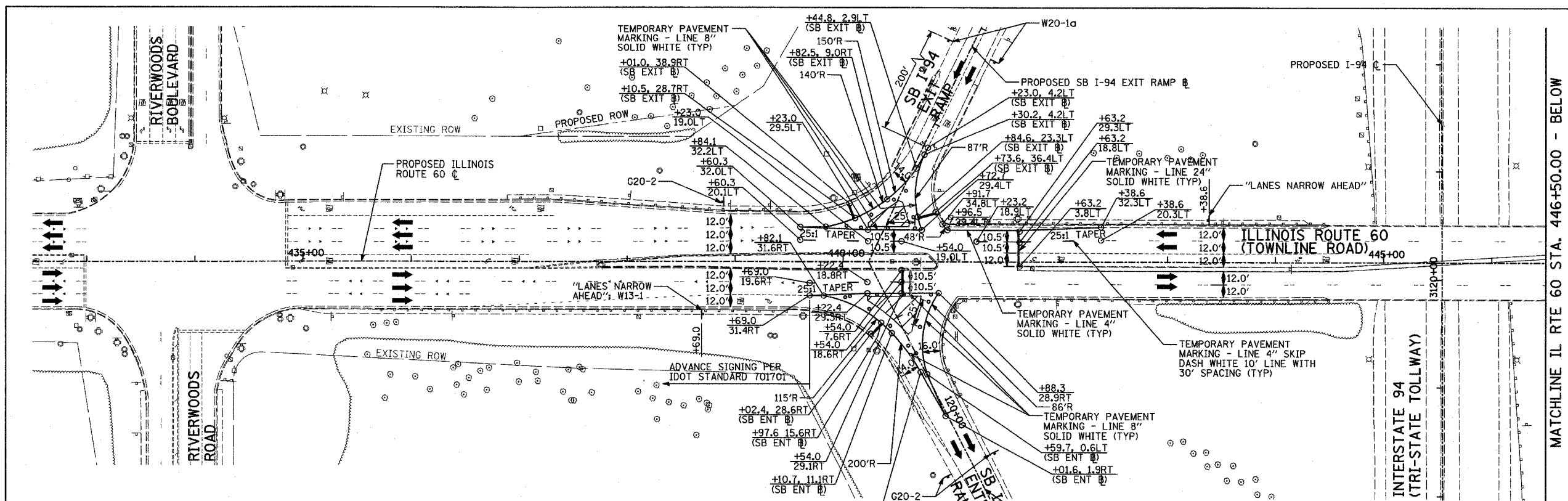


F.A.P. RTE.	SECTION	COUNTY	TOTAL SHEETS	SHEET NO.
335	119R-2	LAKE	439	87
STA. 432+83.12		TO STA. 470+56.84		
FED. ROAD DIST. NO.		ILLINOIS FED. AID PROJECT		60B01

- LEGEND:**
- CONSTRUCTION ZONE
 - TEMPORARY PAVEMENT
 - TRAFFIC MOVEMENT
 - TEMPORARY SIGN (SEE M.O.T. SIGNING LEGEND)
 - TYPE II BARRICADES OR DRUMS W/ MONO-DIRECTIONAL STEADY BURNING LIGHT
 - TYPE III BARRICADE W/2 FLASHING BIDIRECTIONAL LIGHTS
 - TEMPORARY CONCRETE BARRIER
 - ARROW BOARD
 - M.O.T. APPURTENANCES REMAINING FROM PREVIOUS STAGES



REVISIONS

NO.	NAME	DATE

ILLINOIS DEPARTMENT OF TRANSPORTATION
 ILLINOIS RTE 60 OVER I-94
 MAINTENANCE OF TRAFFIC PLAN
 IL RTE 60 STA. 432+50.00 TO 461+50.00
 PRE-STAGE A - SHEET 1 OF 2

SCALE: 1"=50'-0"
 DATE: MAY 8, 2007
 DRAWN BY: MPC, CBS
 CHECKED BY: JDF

TYLIN INTERNATIONAL

05/02/2007 10:24:49 AM