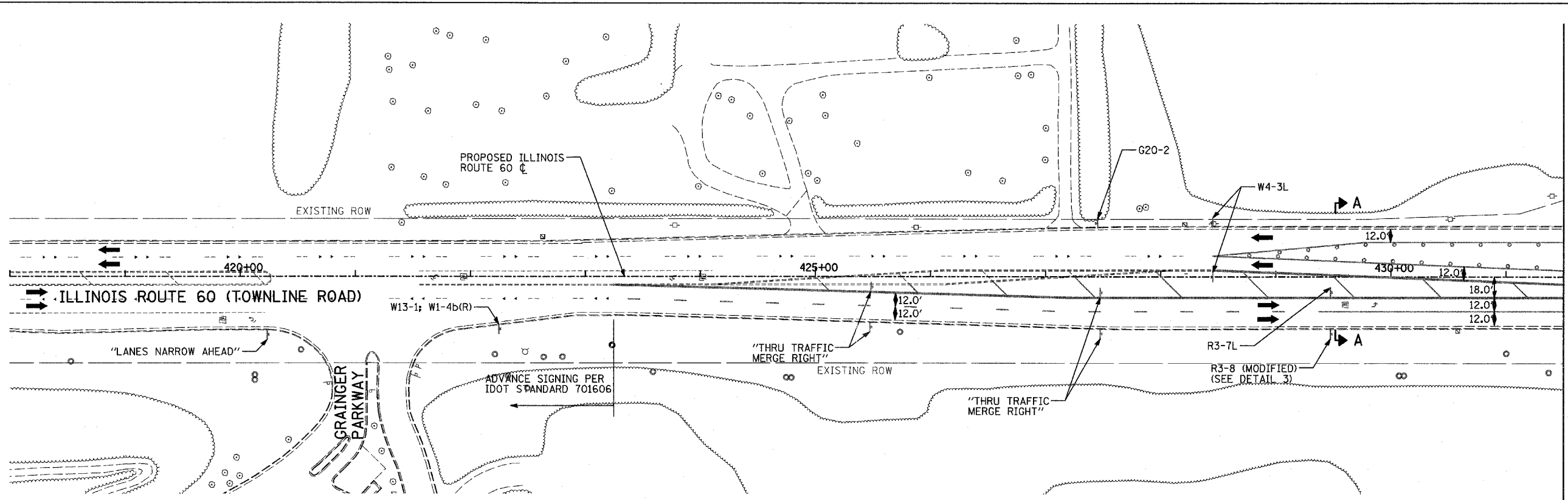


F.A.P. RTE.	SECTION	COUNTY	TOTAL SHEETS	SHEET NO.
335	119R-2	LAKE	439	99
STA. 432+83.12		TO STA. 470+56.84		
FED. ROAD DIST. NO.		ILLINOIS FED. AID PROJECT		

60B01



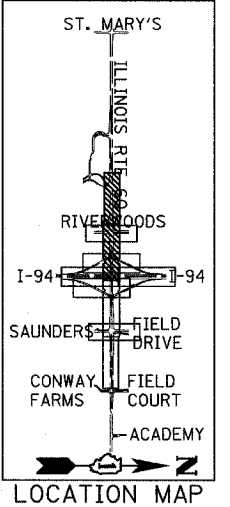
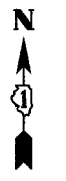
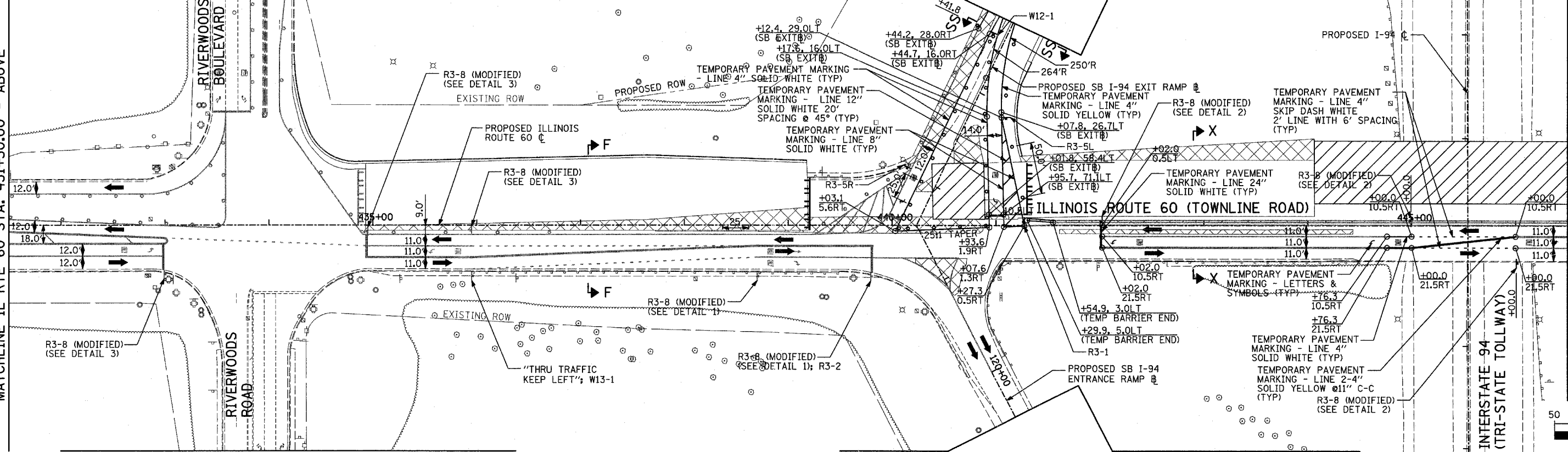
**LEGEND:**

- CONSTRUCTION ZONE
- TEMPORARY PAVEMENT
- TRAFFIC MOVEMENT
- TEMPORARY SIGN (SEE M.O.T. SIGNING LEGEND)
- TYPE II BARRICADES OR DRUMS W/ MONO-DIRECTIONAL STEADY BURNING LIGHT
- TYPE III BARRICADE W/2 FLASHING BIDIRECTIONAL LIGHTS
- TEMPORARY CONCRETE BARRIER
- ARROW BOARD
- M.O.T. APPURTENANCES REMAINING FROM PREVIOUS STAGES

MATCHLINE IL RTE 60 STA. 431+50.00 - BELOW

MATCHLINE RIVERWOODS BOULEVARD - SHEET 3 OF 5

MATCHLINE SB I-94 EXIT RAMP STA. 116+25.00 - SHEET 4 OF 5



MATCHLINE IL RTE 60 STA. 446+50.00 - SHEET 2 OF 5

MATCHLINE IL RTE 60 STA. 431+50.00 - ABOVE

MATCHLINE RIVERWOODS ROAD - SHEET 3 OF 5

MATCHLINE SB I-94 ENTRANCE RAMP STA. 120+50.00 - SHEET 4 OF 5

REVISIONS	
NAME	DATE

ILLINOIS DEPARTMENT OF TRANSPORTATION  
 ILLINOIS RTE 60 OVER I-94  
 MAINTENANCE OF TRAFFIC PLAN  
 IL RTE 60 STA. 418+00.00 TO 446+50.00  
 STAGE 1A - SHEET 1 OF 5

SCALE: 1"=50'-0"  
 DATE: MAY 8, 2007  
 DRAWN BY: MPG, CBS  
 CHECKED BY: JDF

**TYLIN** INTERNATIONAL