

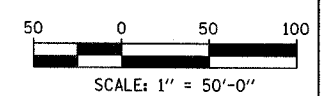
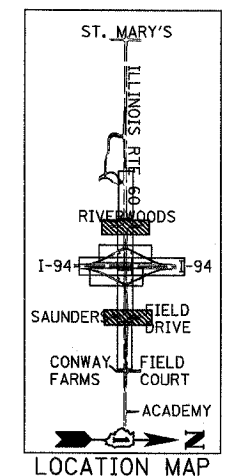
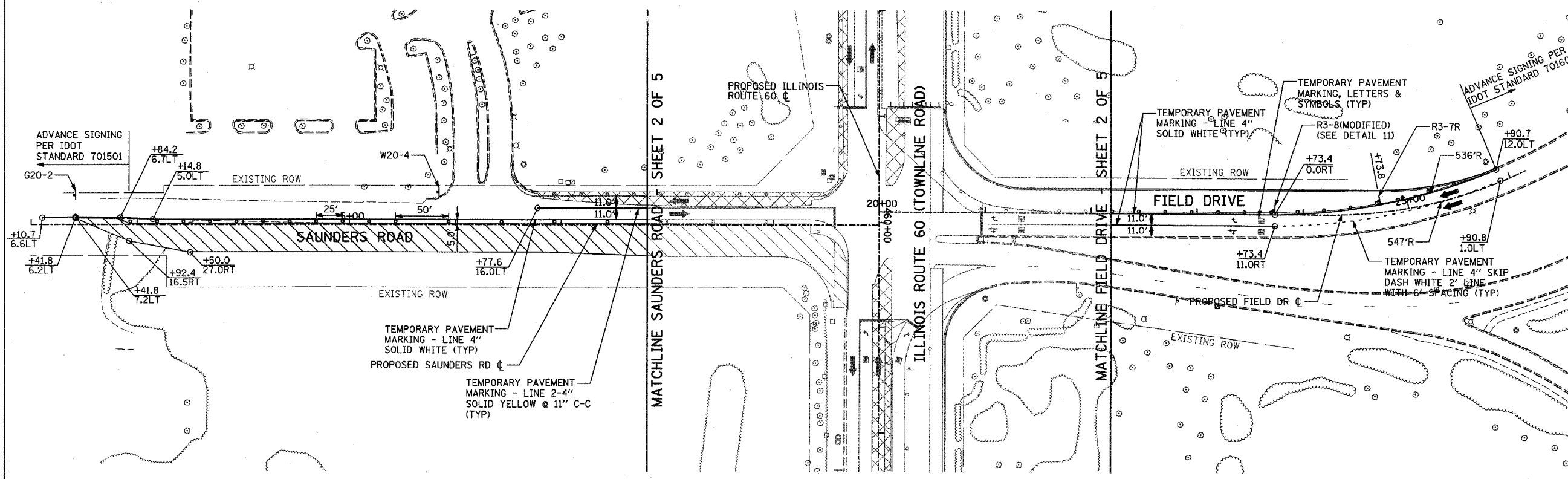
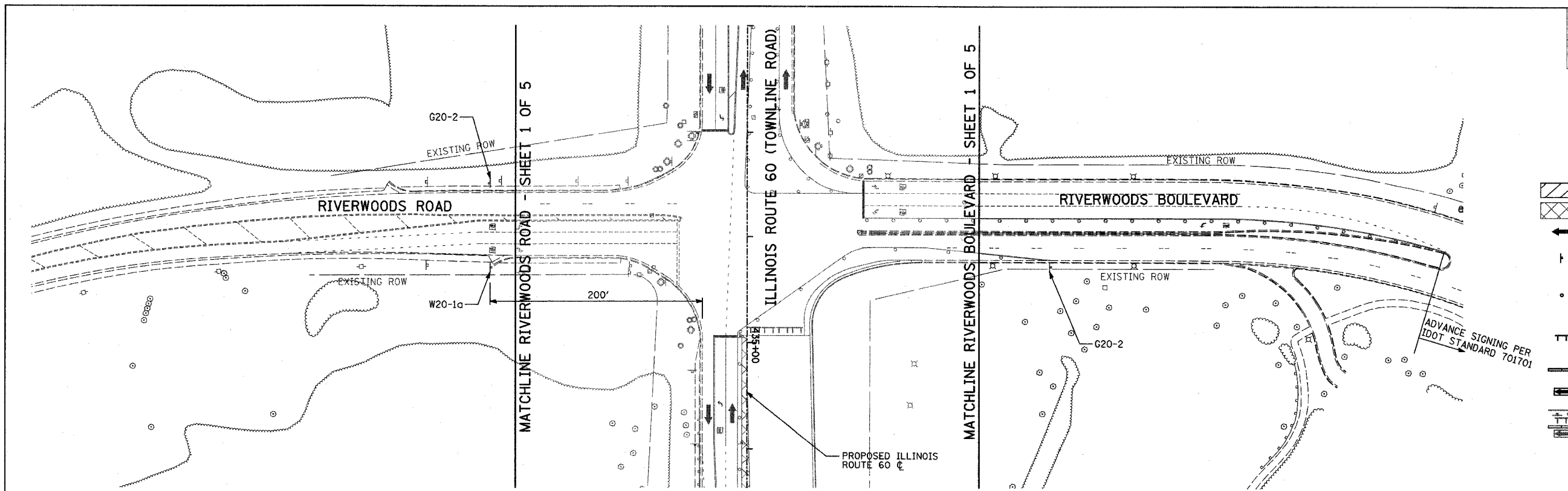
F.A.P. RTE.	SECTION	COUNTY	TOTAL SHEETS	SHEET NO.
335	119R-2	LAKE	439	101
STA. 432+83.12		TO STA. 470+56.84		
FED. ROAD DIST. NO.		ILLINOIS FED. AID PROJECT		

60B01



LEGEND:

- CONSTRUCTION ZONE
- TEMPORARY PAVEMENT
- TRAFFIC MOVEMENT
- TEMPORARY SIGN (SEE M.O.T. SIGNING LEGEND)
- TYPE II BARRICADES OR DRUMS W/ MONO-DIRECTIONAL STEADY BURNING LIGHT
- TYPE III BARRICADE W/2 FLASHING BIDIRECTIONAL LIGHTS
- TEMPORARY CONCRETE BARRIER
- ARROW BOARD
- M.O.T. APPURTENANCES REMAINING FROM PREVIOUS STAGES



REVISIONS	
NAME	DATE

ILLINOIS DEPARTMENT OF TRANSPORTATION
 ILLINOIS RTE 60 OVER I-94
 MAINTENANCE OF TRAFFIC PLAN
 IL RTE 60 @ RIVERWOODS RD/BLVD
 & SAUNDERS RD/FIELD DR
 STAGE 1A - SHEET 3 OF 5

SCALE: 1"=50'-0"
 DATE: MAY 8, 2007
 DRAWN BY: MPG, CBS
 CHECKED BY: JDF

TYLIN INTERNATIONAL

05/02/2007 10:27:25 AM