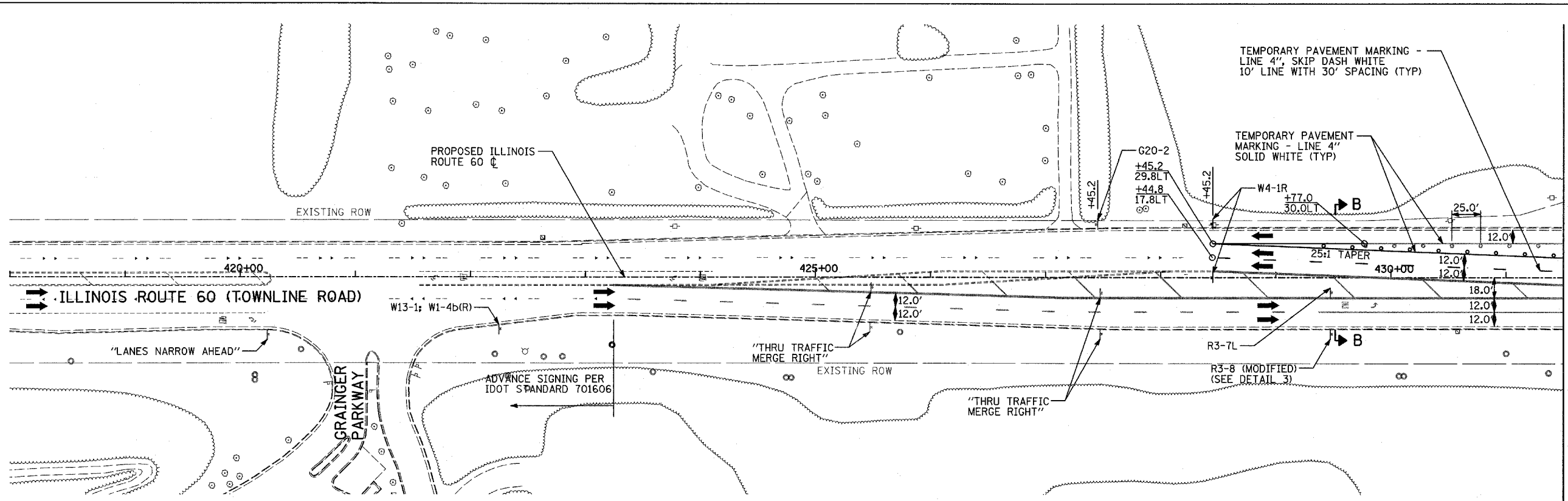


F.A.P. RTE.	SECTION	COUNTY	TOTAL SHEETS	SHEET NO.
335	119R-2	LAKE	439	104
STA. 432+83.12		TO STA. 470+56.84		
FED. ROAD DIST. NO.		ILLINOIS FED. AID PROJECT		

60B01



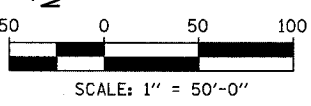
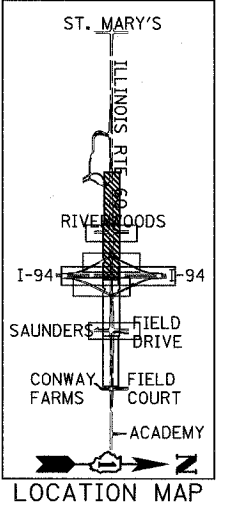
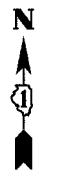
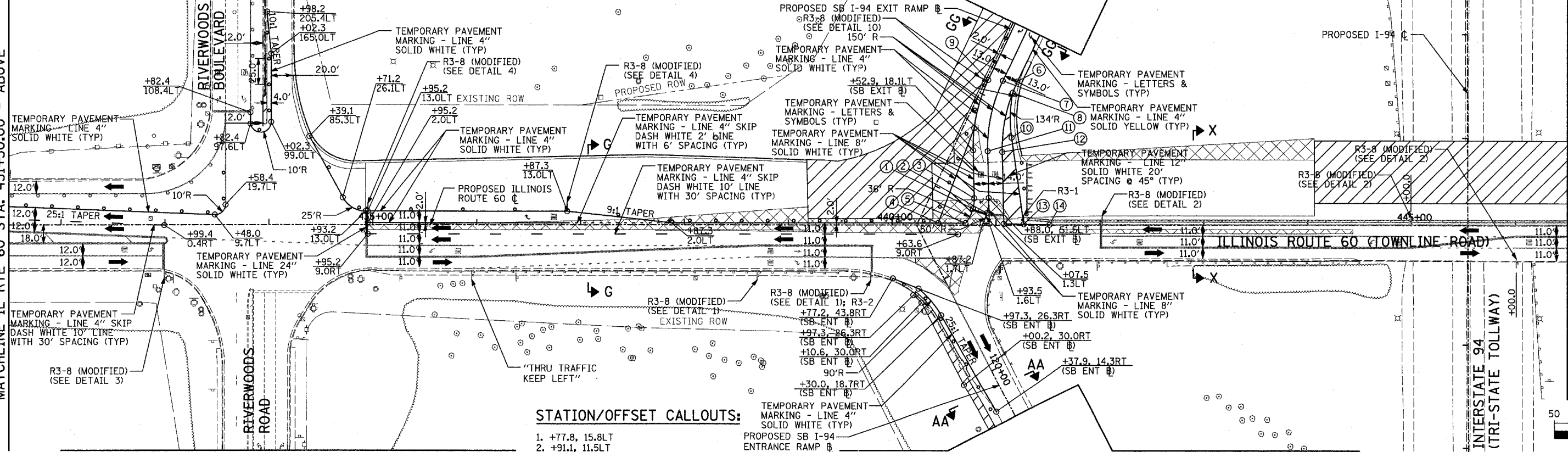
LEGEND:

	CONSTRUCTION ZONE
	TEMPORARY PAVEMENT
	TRAFFIC MOVEMENT
	TEMPORARY SIGN (SEE M.O.T. SIGNING LEGEND)
	TYPE II BARRICADES OR DRUMS W/ MONO-DIRECTIONAL STEADY BURNING LIGHT
	TYPE III BARRICADE W/2 FLASHING BIDIRECTIONAL LIGHTS
	TEMPORARY CONCRETE BARRIER
	ARROW BOARD
	M.O.T. APPURTENANCES REMAINING FROM PREVIOUS STAGES

MATCHLINE IL RTE 60 STA. 431+50.00 - BELOW

MATCHLINE RIVERWOODS BOULEVARD - SHEET 3 OF 5

MATCHLINE SB I-94 EXIT RAMP STA. 116+25.00 - SHEET 4 OF 5



STATION/OFFSET CALLOUTS:

1. +77.8, 15.8LT
2. +91.1, 11.5LT
3. +94.3, 39.0LT (SB EXIT Ⓟ)
4. +44.3, 2.0LT
5. +70.7, 2.0LT
6. +74.7, 28.0LT (SB EXIT Ⓟ)
7. +80.0, 15.0LT (SB EXIT Ⓟ)
8. +86.3, 28.4LT (SB EXIT Ⓟ)
9. +85.3, 2.0LT (SB EXIT Ⓟ)
10. +26.0, 46.2LT (SB EXIT Ⓟ)
11. +47.6, 31.1LT (SB EXIT Ⓟ)
12. +42.3, 44.1LT (SB EXIT Ⓟ)
13. +26.7, 0.9LT
14. +51.5, 0.5LT

REVISIONS	
NAME	DATE

ILLINOIS DEPARTMENT OF TRANSPORTATION
 ILLINOIS RTE 60 OVER I-94
 MAINTENANCE OF TRAFFIC PLAN
 IL RTE 60 STA. 418+00.00 TO 446+50.00
 STAGE 2 - SHEET 1 OF 5

SCALE: 1"=50'-0"
 DATE: MAY 8, 2007
 DRAWN BY: CBS
 CHECKED BY: MPG

TYLIN INTERNATIONAL