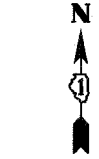
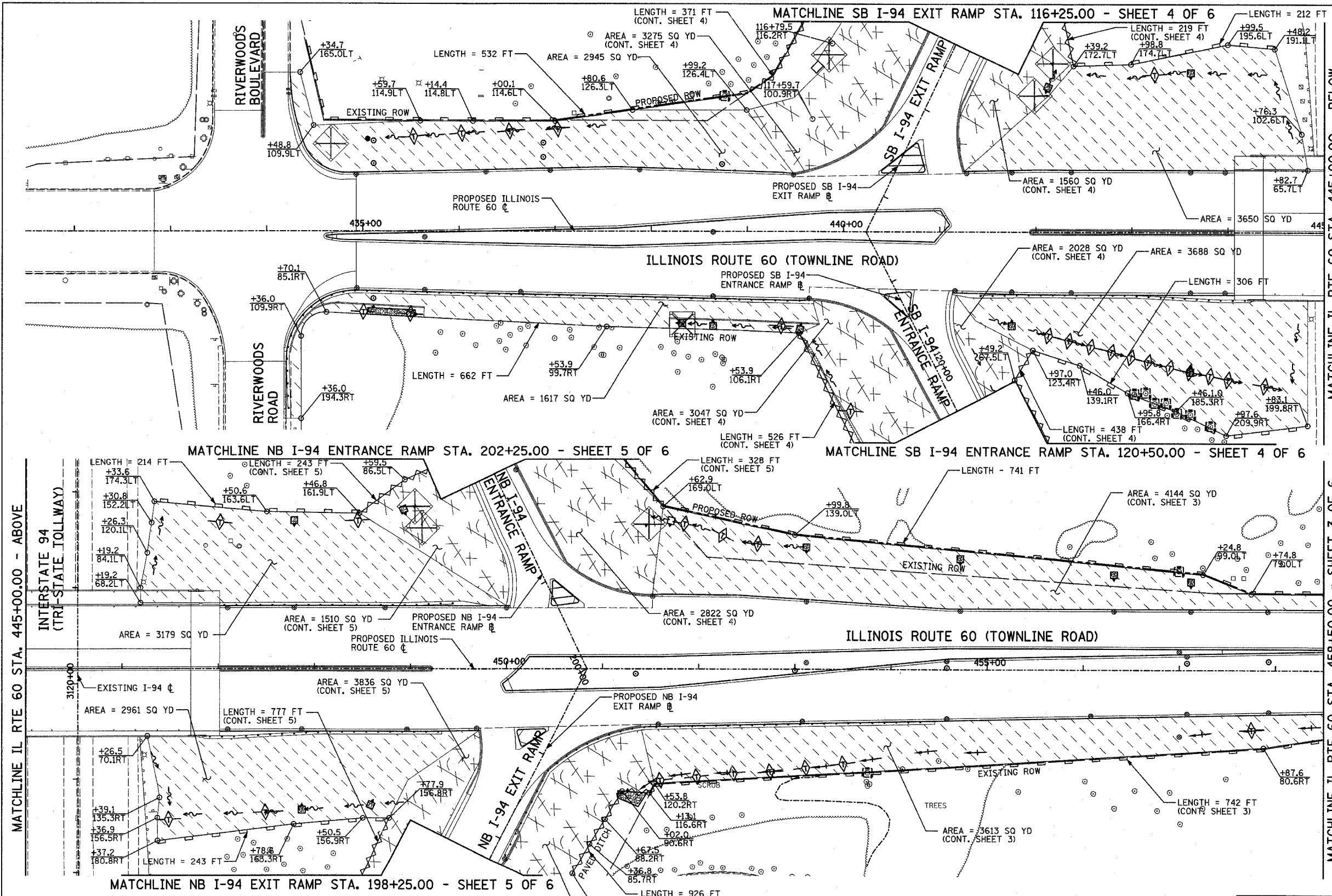
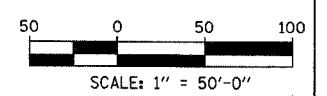
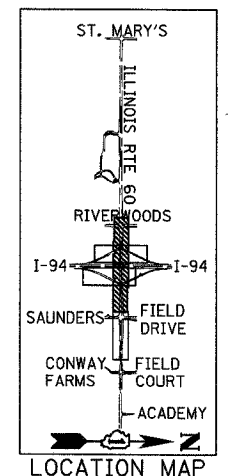
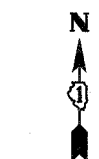


F.A.P. RTE.	SECTION	COUNTY	TOTAL SHEETS	SHEET NO.
335	119R-2	LAKE	439	133
STA. 432+83.12		TO STA. 470+56.84		
FED. ROAD DIST. NO.		ILLINOIS FED. AID PROJECT		

60B01



- LEGEND:**
- TEMPORARY EROSION CONTROL SEEDING W/ EROSION CONTROL BLANKET
  - TEMPORARY STABILIZATION WITH STRAW MULCH
  - SEDIMENT CONTROL, SILT FENCE
  - SILT FENCE
  - INLET FILTER, TO BE INSTALLED IN OFF PROJECT DRAINAGE STRUCTURES ACCEPTING STORMWATER RUNOFF
  - TEMPORARY DITCH CHECK
  - PROPOSED DRAINAGE DITCH (SEE DRAINAGE PLANS)
  - PROPOSED DRAINAGE SWALE (SEE DRAINAGE PLANS)
  - EXISTING DRAINAGE SWALE
  - INLET AND PIPE PROTECTION
  - TEMPORARY FENCE FOR TREE PROTECTION (15 FEET PER SIDE = 60 FEET TOTAL)



**NOTES:**  
 THIS PLAN HAS BEEN PREPARED TO COMPLY WITH THE PROVISIONS OF THE NPDES PERMIT NUMBER ILR10, ISSUED BY THE ILLINOIS ENVIRONMENTAL PROTECTION AGENCY FOR STORM WATER DICHARGES FROM CONSTRUCTION SITE ACTIVITIES.  
 NPDES PERMIT NO. ILR400493

REVISIONS	
NAME	DATE

ILLINOIS DEPARTMENT OF TRANSPORTATION  
 ILLINOIS RTE 60 OVER I-94  
 TEMPORARY EROSION/SEDIMENT CONTROL PLANS  
 IL RTE 60 STA. 432+83.12 TO 458+50.00  
 SHEET 2 OF 6

SCALE: 1"=50'-0"  
 DATE: MAY 8, 2007  
 DRAWN BY: CBS  
 CHECKED BY: MPG

TYLIN INTERNATIONAL

05/07/2007 12:00:04 PM