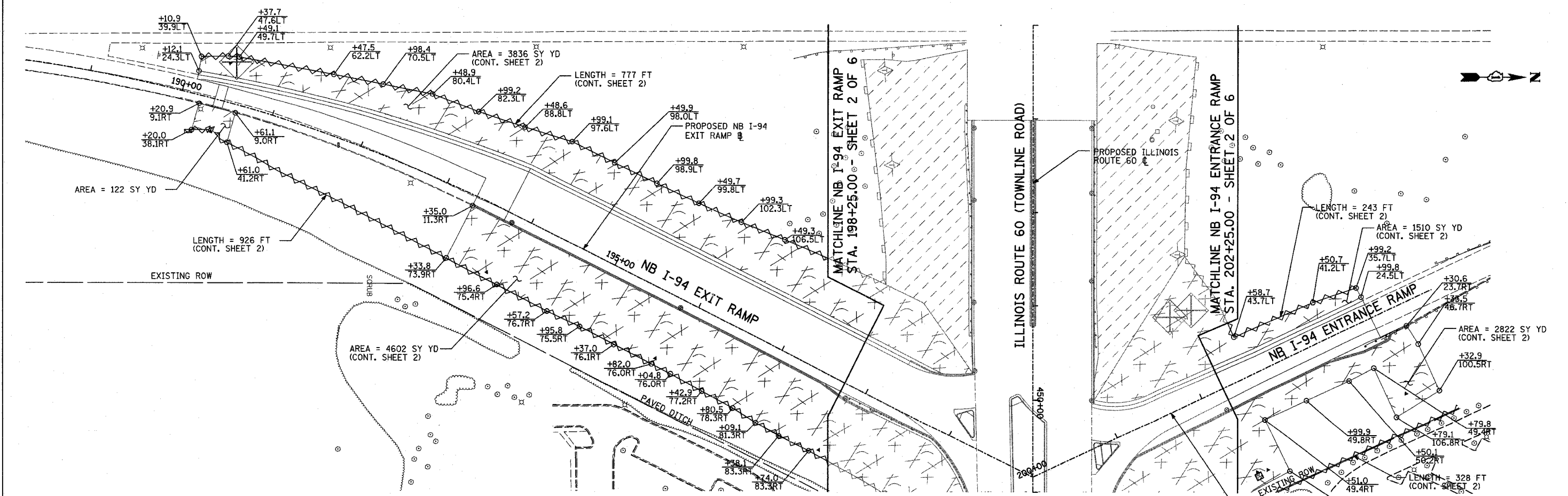


F.A.P. RTE.	SECTION	COUNTY	TOTAL SHEETS	SHEET NO.
335	119R-2	LAKE	439	136
STA. 432+83.12		TO STA. 470+56.84		
FED. ROAD DIST. NO.	ILLINOIS FED. AID PROJECT			

60B01

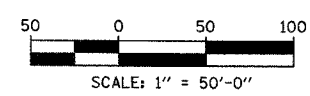
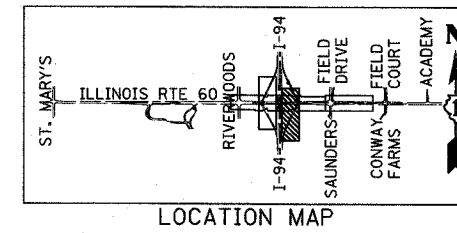


LEGEND:

- TEMPORARY EROSION CONTROL SEEDING W/ EROSION CONTRL BLANKET
- TEMPORARY STABILIZATION WITH STRAW MULCH
- SEDIMENT CONTROL, SILT FENCE
- SILT FENCE
- INLET FILTER, TO BE INSTALLED IN OFF PROJECT DRAINAGE STRUCTURES ACCEPTING STORMWATER RUNOFF
- TEMPORARY DITCH CHECK
- PROPOSED DRAINAGE DITCH (SEE DRAINAGE PLANS)
- PROPOSED DRAINAGE SWALE (SEE DRAINAGE PLANS)
- EXISTING DRAINAGE SWALE
- INLET AND PIPE PROTECTION
- TEMPORARY FENCE FOR TREE PROTECTION (15 FEET PER SIDE = 60 FEET TOTAL)

NOTES:

THIS PLAN HAS BEEN PREPARED TO COMPLY WITH THE PROVISIONS OF THE NPDES PERMIT NUMBER ILR10, ISSUED BY THE ILLINOIS ENVIRONMENTAL PROTECTION AGENCY FOR STORM WATER DISCHARGES FROM CONSTRUCTION SITE ACTIVITIES. NPDES PERMIT NO. ILR400493



TYLIN INTERNATIONAL

REVISIONS		ILLINOIS DEPARTMENT OF TRANSPORTATION ILLINOIS RTE 60 OVER I-94 TEMPORARY EROSION/SEDIMENT CONTROL PLANS NORTHBOUND INTERSTATE 94 RAMPS SHEET 5 OF 6
NAME	DATE	
		SCALE: 1"=50'-0" DATE: MAY 8, 2007 DRAWN BY: CBS CHECKED BY: MPG

05/07/2007 12:40:37 PM I:\60245811\60\road\60b01.srf