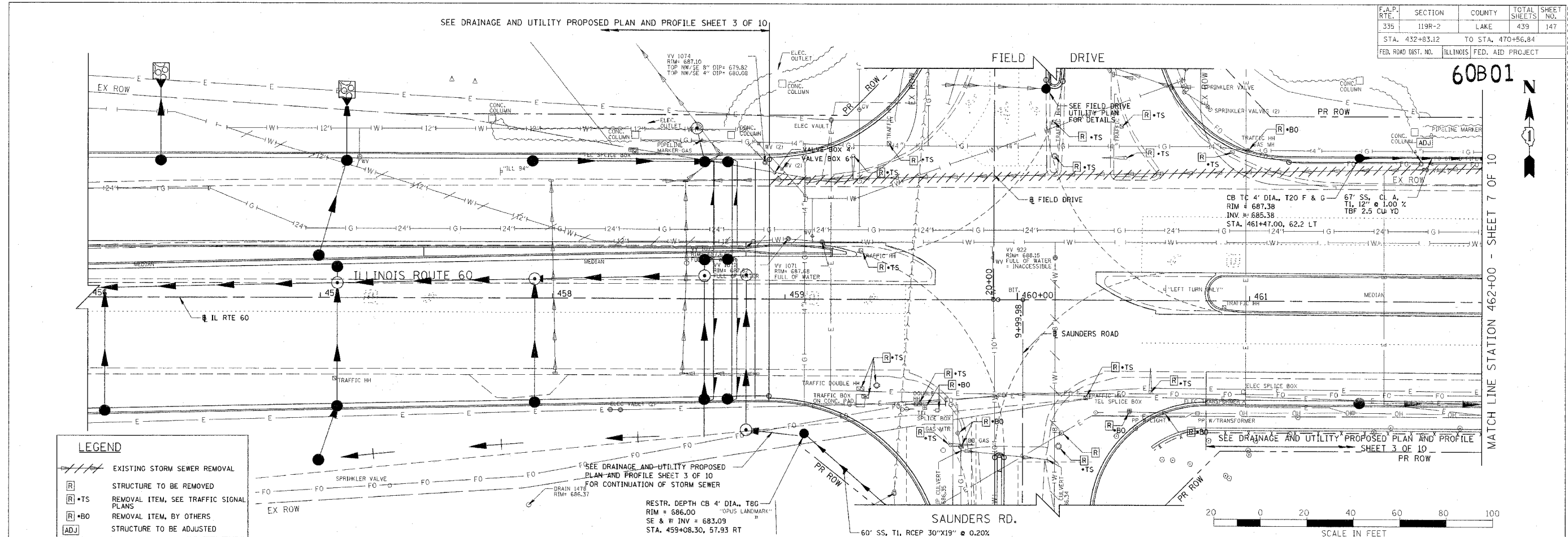


F.A.P. RTE.	SECTION	COUNTY	TOTAL SHEETS	SHEET NO.
335	119R-2	LAKE	439	147
STA. 432+83.12		TO STA. 470+56.84		
FED. ROAD DIST. NO.		ILLINOIS FED. AID PROJECT		

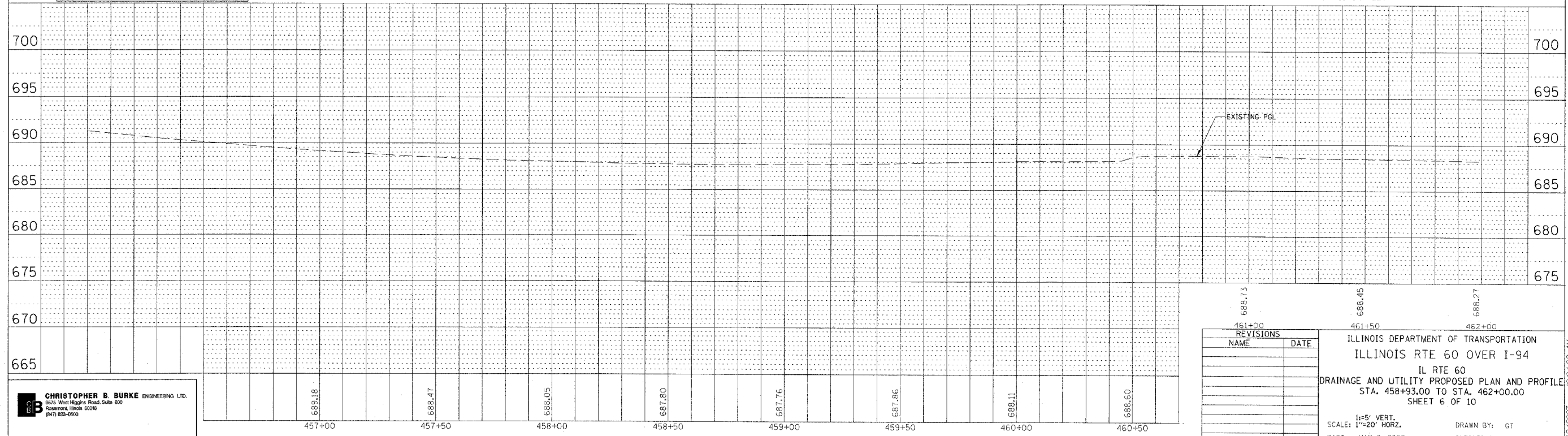
60B01

MATCH LINE STATION 462+00 - SHEET 7 OF 10



LEGEND

- EXISTING STORM SEWER REMOVAL
- STRUCTURE TO BE REMOVED
- REMOVAL ITEM, SEE TRAFFIC SIGNAL PLANS
- REMOVAL ITEM, BY OTHERS
- STRUCTURE TO BE ADJUSTED



REVISIONS	
NAME	DATE

ILLINOIS DEPARTMENT OF TRANSPORTATION
 ILLINOIS RTE 60 OVER I-94
 IL RTE 60
 DRAINAGE AND UTILITY PROPOSED PLAN AND PROFILE
 STA. 458+93.00 TO STA. 462+00.00
 SHEET 6 OF 10

SCALE: 1"=20' HORIZ.
 DATE: MAY 8, 2007
 DRAWN BY: GT
 CHECKED BY: MCW

CHRISTOPHER B. BURKE ENGINEERING LTD.
 9675 West Higgins Road, Suite 600
 Rosemont, Illinois 60018
 (847) 629-6900

PLAN

DATE	BY

REVISIONS:
 SURVEYED
 DRAWN
 CHECKED
 IN CHARGE
 DATE
 BY

PROFILE

DATE	BY

REVISIONS:
 SURVEYED
 DRAWN
 CHECKED
 IN CHARGE
 DATE
 BY

5/12/2007 10:04:22 AM