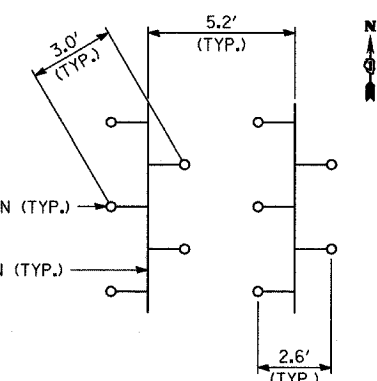
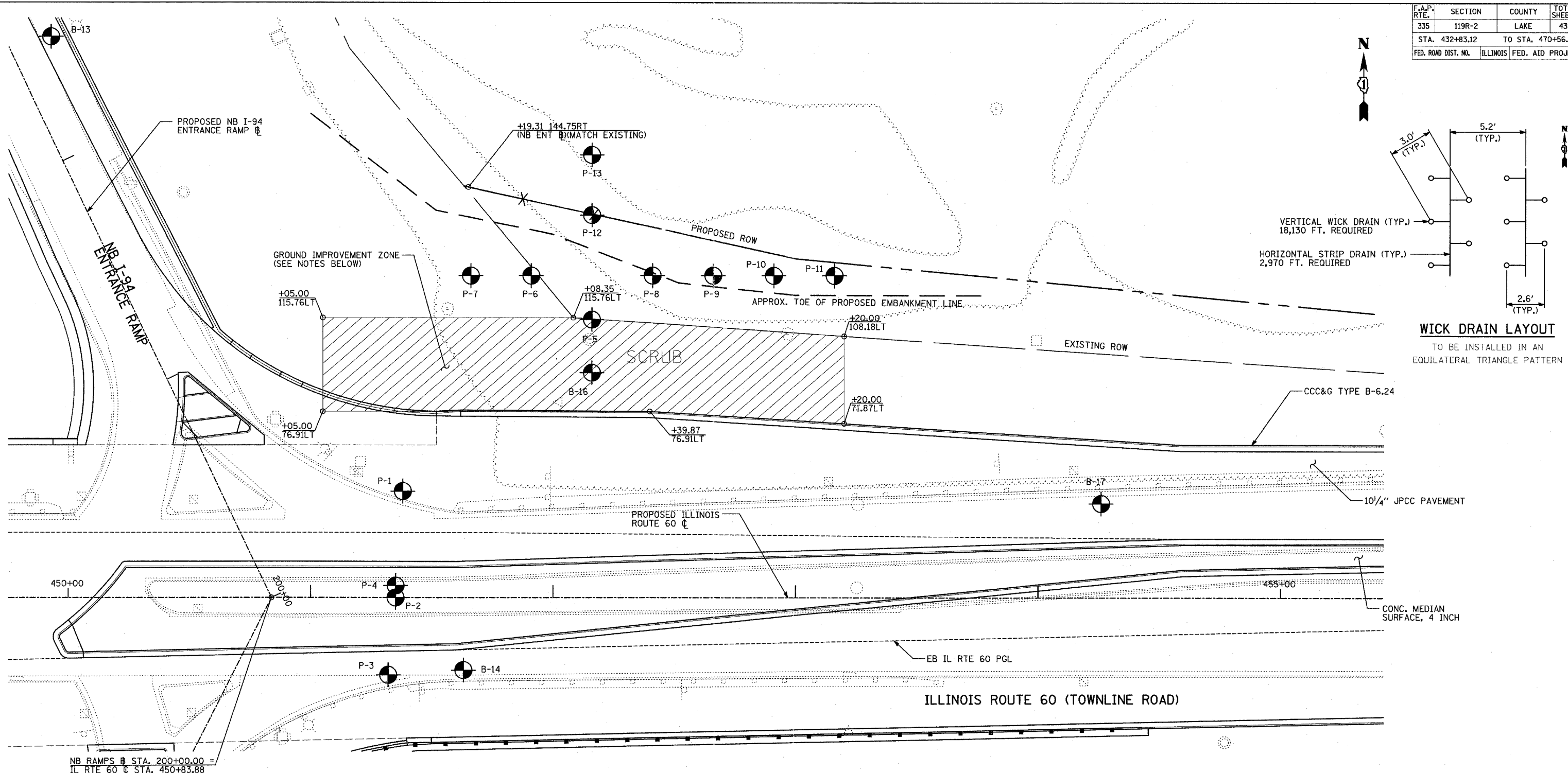


F.A.P. RTE. 335	SECTION 119R-2	COUNTY LAKE	TOTAL SHEETS 439	SHEET NO. 160
STA. 432+83.12		TO STA. 470+56.84		
FED. ROAD DIST. NO.	ILLINOIS	FED. AID PROJECT		

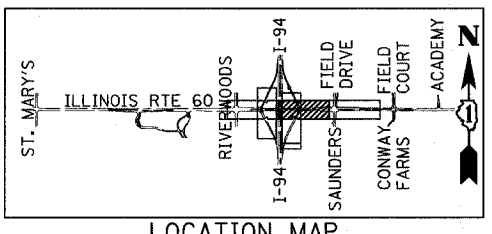
60B01



**WICK DRAIN LAYOUT**  
TO BE INSTALLED IN AN EQUILATERAL TRIANGLE PATTERN

**NOTES:**

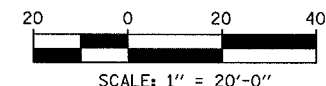
- VERTICAL WICK DRAINS SHALL BE INSTALLED AT THE SPACING SHOWN WITHIN THE LIMITS IDENTIFIED ON THIS SHEET.
- A HORIZONTAL STRIP DRAIN SHALL BE INSTALLED PERPENDICULAR TO THE IL60 CENTERLINE BETWEEN EVERY PAIR OF VERTICAL DRAIN ROWS TO CONVEY DISCHARGE TO THE DITCH AT THE TOE OF THE PROPOSED EMBANKMENT. STRIP DRAINS SHALL BE INSTALLED IN A MANNER TO PROVIDE POSITIVE DRAINAGE AWAY FROM THE VERTICAL DRAIN ZONE.
- THE FIRST LIFT OF EMBANKMENT PLACED OVER THE HORIZONTAL STRIP DRAINS SHALL CONSIST OF FA-1 OR FA-2 SAND. THE SAND BLANKET SHALL BE INCLUDED IN THE COST OF EMBANKMENT.
- EMBANKMENT MATERIAL MAY BE USED TO BUILD A CONSTRUCTION PLATFORM OVER SOFT SOILS IN GROUND IMPROVEMENT ZONE BEFORE INSTALLATION OF WICK DRAINS, HORIZONTAL STRIP DRAINS, AND SAND LAYER. EMBANKMENT MUST BE COMPACTED IN ACCORDANCE WITH ARTICLE 205.06 OF THE STANDARD SPECIFICATIONS.
- EXCAVATION REQUIRED TO ESTABLISH CONSTRUCTION PLATFORM SHALL BE INCLUDED IN THE COST OF EXCAVATION.
- GROUND IMPROVEMENT TO BE COORDINATED WITH CULVERT INSTALLATION AT STA. 451+35.
- PAVING OF OUTSIDE TWO LANES OF WB IL 60 SHALL NOT COMMENCE UNTIL INSTALLATION OF WICK DRAIN SYSTEM, COMPLETION OF EMBANKMENT AND SUBGRADE CONSTRUCTION, AND COMPLETION OF SETTLEMENT WAITING PERIOD PER SPECIAL PROVISION.
- EACH WICK DRAIN SHALL BE INSTALLED TO ELEVATION 665 AFTER TOPSOIL AND VEGETATION REMOVAL, OR AS DIRECTED BY THE ENGINEER.



LOCATION MAP

**LEGEND**

- WICK DRAIN INSTALLATION LIMITS
- SOIL BORING LOCATION
- WICK DRAIN
- PROPOSED RIGHT-OF-WAY
- EXISTING RIGHT-OF-WAY



REVISIONS	
NAME	DATE

ILLINOIS DEPARTMENT OF TRANSPORTATION  
ILLINOIS RTE 60 OVER I-94  
PROPOSED GROUND IMPROVEMENT PLAN  
IL RTE 60 STA. 445+00 TO 458+50

SCALE: 1"=20'-0"  
DATE: MAY 8, 2007  
DRAWN BY: KMA  
CHECKED BY: PDF