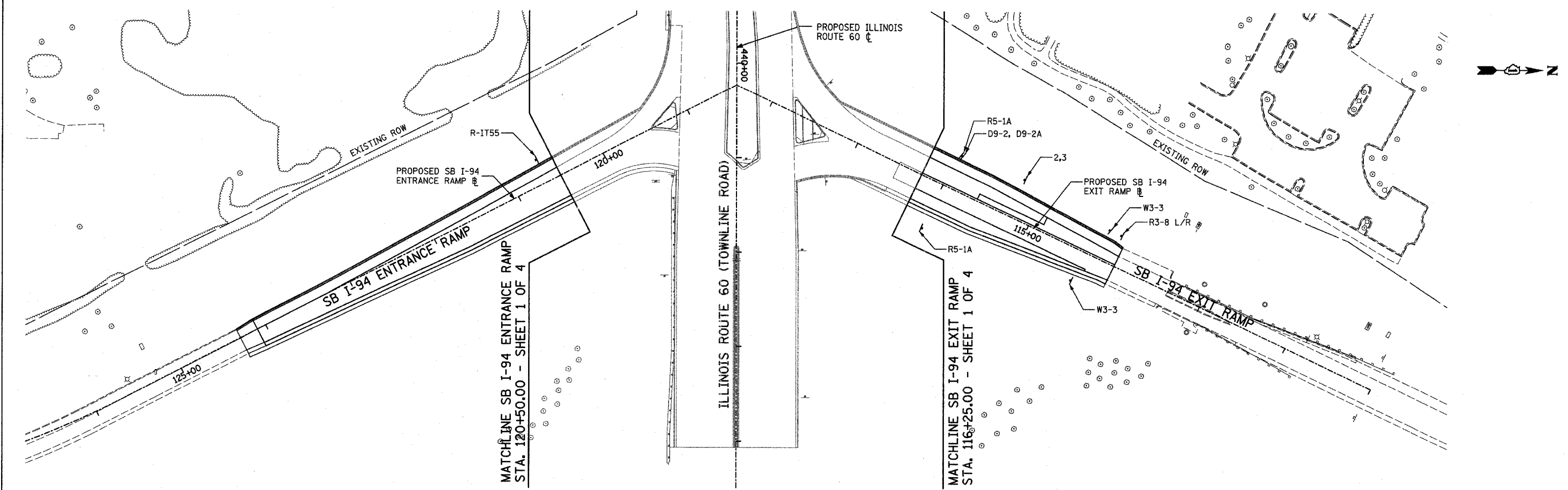


F.A.P. RTE.	SECTION	COUNTY	TOTAL SHEETS	SHEET NO.
335	119R-2	LAKE	439	180
STA. 432+83.12		TO STA. 470+56.84		
FED. ROAD DIST. NO.		ILLINOIS FED. AID PROJECT		

60B01



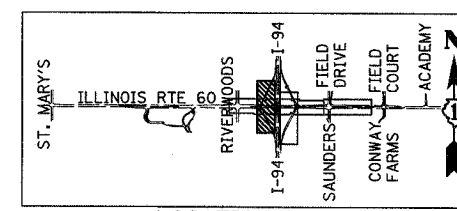
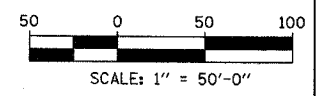
SIGNING LEGEND:

- EXISTING GROUND MOUNTED SIGN
- PROPOSED GROUND MOUNTED SIGN

R1-1— SEE PROPOSED SIGNING LEGEND AND SCHEDULE



PROPOSED LARGE SIGN PANEL (SEE SIGN PANEL DETAILS AND SCHEDULE)



LOCATION MAP

REVISIONS	
NAME	DATE

ILLINOIS DEPARTMENT OF TRANSPORTATION
 ILLINOIS RTE 60 OVER I-94
 PROPOSED SIGNING PLAN
 SOUTHBOUND INTERSTATE 94 RAMPS
 SHEET 3 OF 4

SCALE: 1"=50'-0"
 DATE: MAY 8, 2007
 DRAWN BY: AMB
 CHECKED BY: MPG

TYLIN INTERNATIONAL

5/8/2007 5:24:47 PM
 P:\60245811-60Nroad\60sign_sip03.dgn