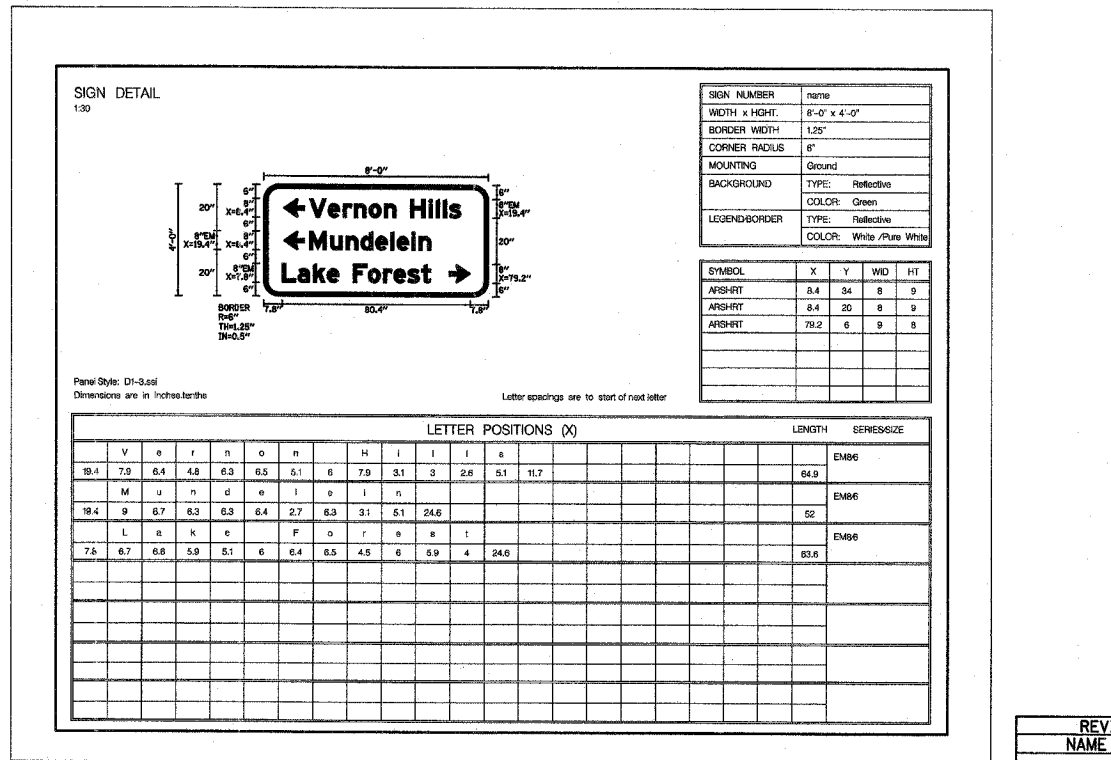
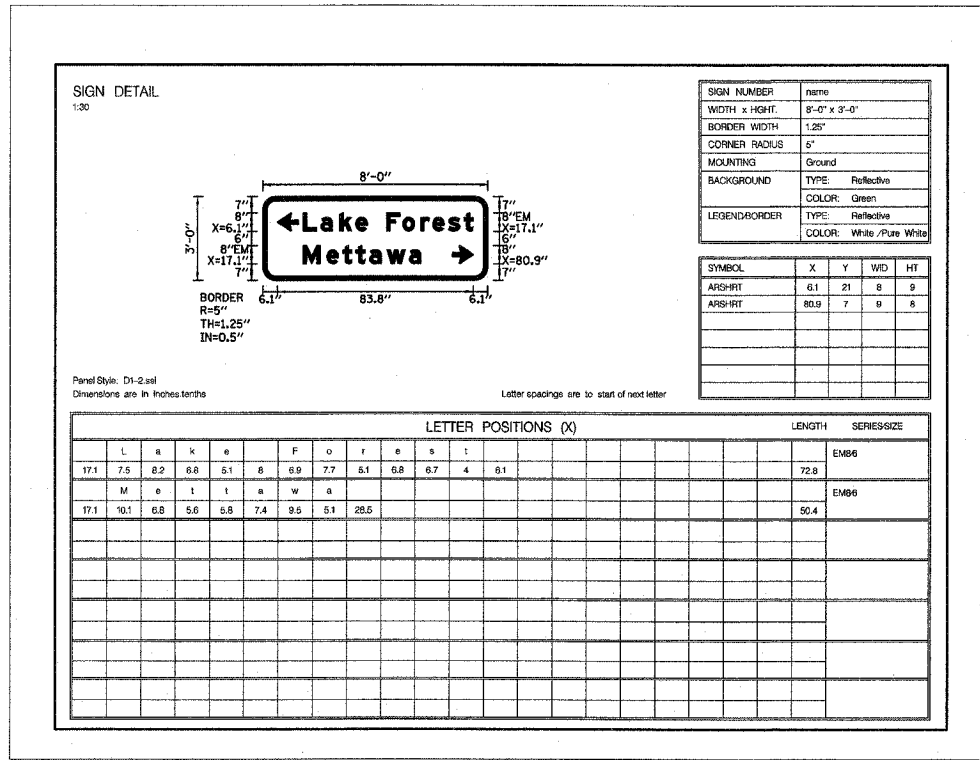
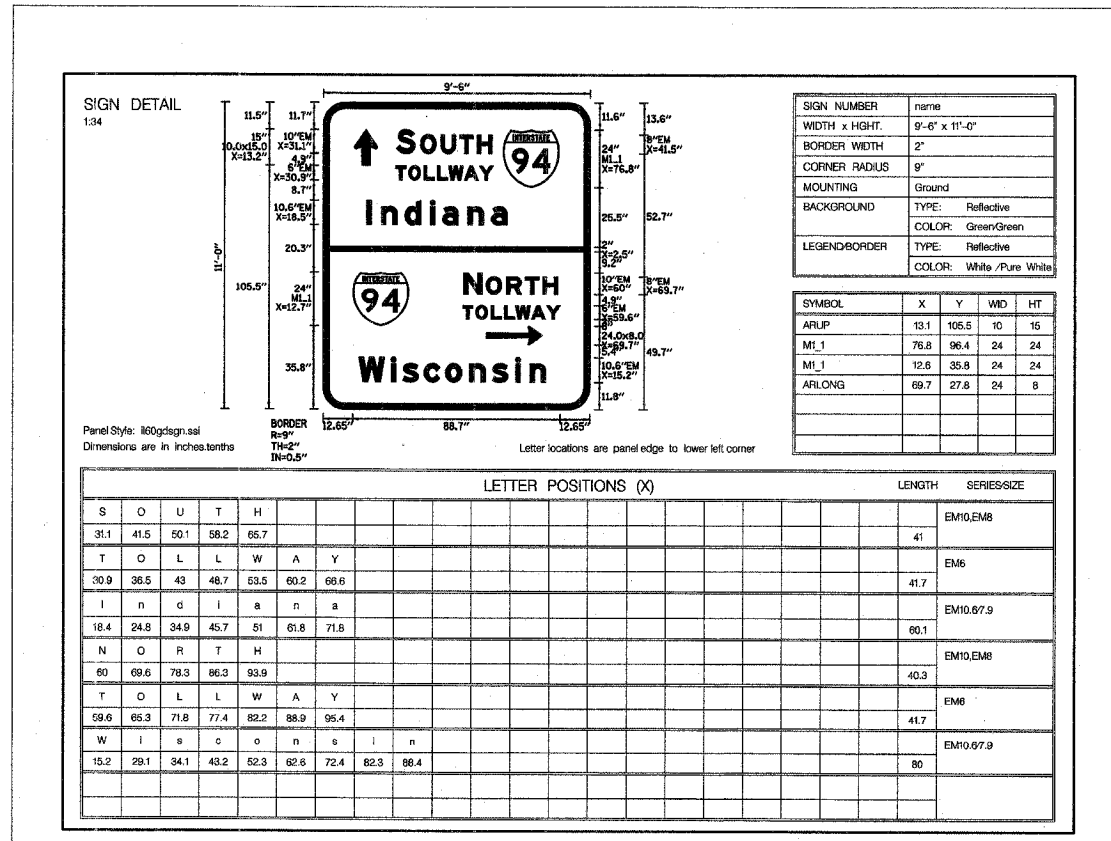
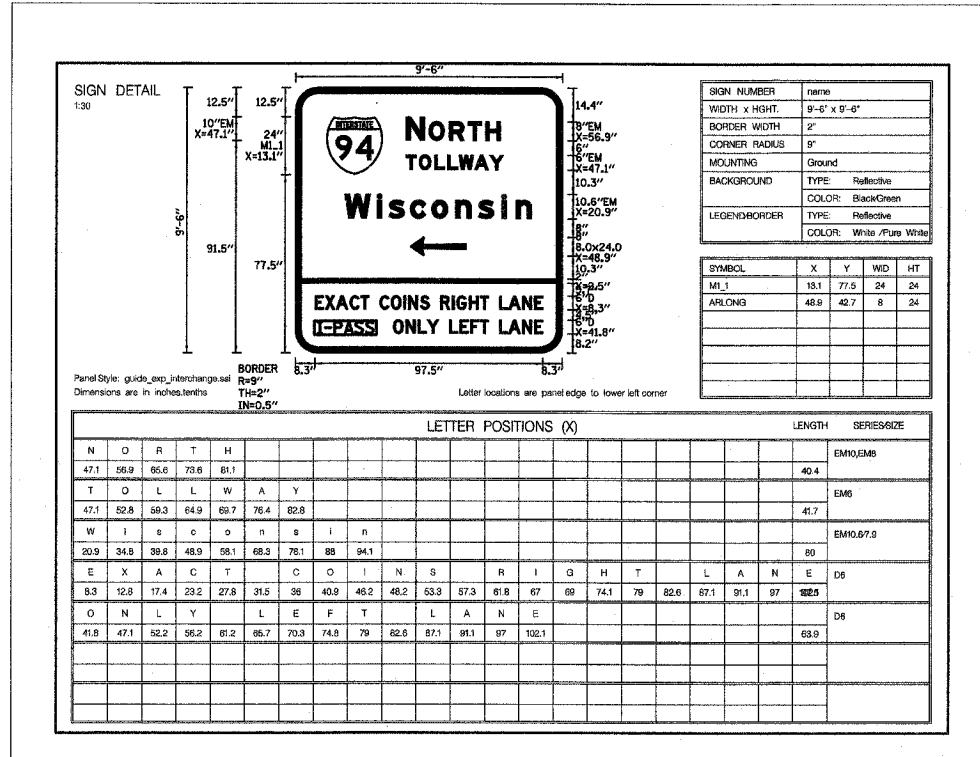


F.A.P. RTE.	SECTION	COUNTY	TOTAL SHEETS	SHEET NO.
335	119R-2	LAKE	439	187
STA. 432+83.12		TO STA. 470+56.84		
FED. ROAD DIST. NO.		ILLINOIS FED. AID PROJECT		

60B01



TYLIN INTERNATIONAL

REVISIONS	
NAME	DATE

ILLINOIS DEPARTMENT OF TRANSPORTATION  
ILLINOIS RTE 60 OVER I-94  
**SIGN PANEL DETAILS**  
2 OF 4  
  
SCALE: NONE  
DATE: MAY 8, 2007  
  
DRAWN BY: CBS  
CHECKED BY: AMB

5/6/2007 5:25:03 PM  
 I:\60245817\601\road\60b01\sign\60b01.dwg