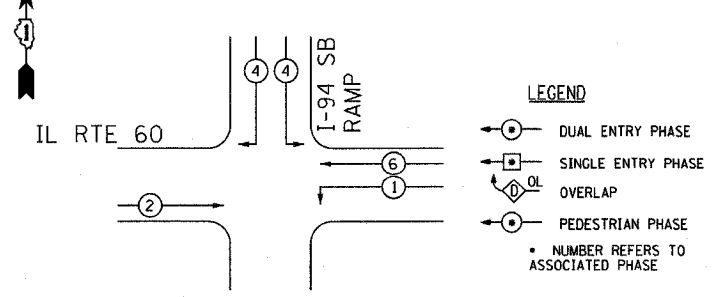


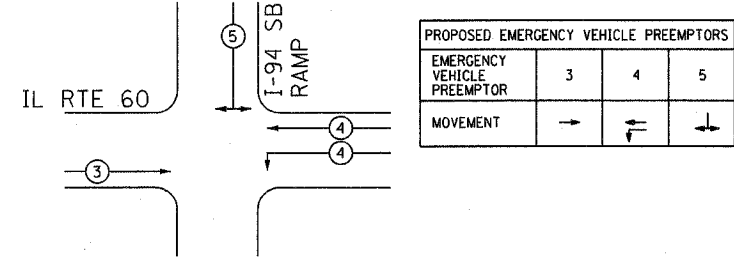
F.A.P. RTE.	SECTION	COUNTY	TOTAL SHEETS	SHEET NO.
335	119R-2	LAKE	439	210
STA.	TO STA.			
FED. ROAD DIST. NO.	ILLINOIS	FED. AID PROJECT		

60B01

TEMPORARY PHASE DESIGNATION DIAGRAM



TEMPORARY EMERGENCY VEHICLE PREEMPTION SEQUENCE



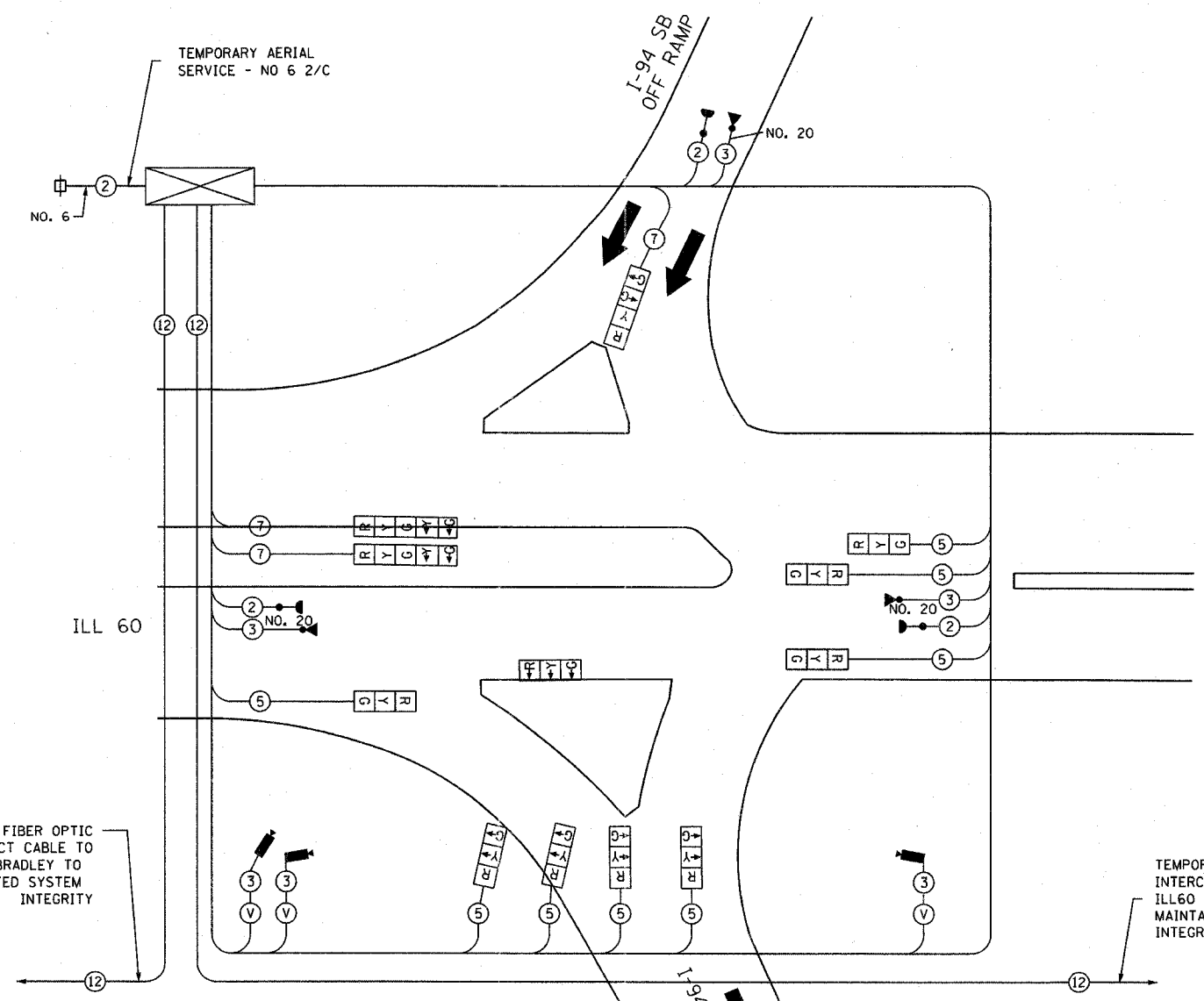
TEMPORARY FIBER OPTIC INTERCONNECT CABLE TO ILL60 & RIVERWOODS/BRADLEY TO MAINTAIN COORDINATED SYSTEM INTEGRITY

TEMPORARY FIBER OPTIC INTERCONNECT CABLE TO ILL60 & I-94 NORTHBOUND RAMP TO MAINTAIN COORDINATED SYSTEM INTEGRITY

TEMPORARY CABLE DIAGRAM LEGEND

- [R] TEMPORARY TRAFFIC SIGNAL SECTION OR PEDESTRIAN SIGNAL SECTION 12" (300mm)
- [X] TEMPORARY CONTROLLER CABINET
- [⊕] TEMPORARY SERVICE INSTALLATION
- (5) INDICATES NUMBER OF CONDUCTORS IN CABLE. ALL CONDUCTORS TO BE NUMBER 14 AWG WIRE UNLESS OTHERWISE NOTED
- [▶] EMERGENCY VEHICLE LIGHT DETECTOR
- [◀] CONFIRMATION BEACON
- [□] VEHICLE DETECTOR, INDUCTION LOOP
- [⊙] PEDESTRIAN PUSHBUTTON DETECTOR
- [Ⓜ] 12" (300mm) PEDESTRIAN SIGNAL SECTION
- [V] VIDEO VEHICLE DETECTOR
- (12) NO. 62.5/125 12F FIBER OPTIC CABLE
- (V) VIDEO DETECTOR CABLE AS RECOMMENDED BY VIDEO CAMERA MANUFACTURER

TEMPORARY CABLE PLAN



NOTE: LOCATION AND NUMBER OF VIDEO DETECTION CAMERAS WILL VARY FROM STAGE TO STAGE

TEMPORARY TRAFFIC SIGNAL INSTALLATION ELECTRICAL SERVICE REQUIREMENTS ILL 60 & I-94 SOUTHBOUND RAMP				TOTAL
TYPE	NO. LAMPS	WATTAGE INCAND. -LED.	% OPERATION	WATTAGE
SIGNAL (RED)	11	17	0.50	93.50
(YELLOW)	11	25	0.25	68.75
(GREEN)	12	15	0.25	45.00
ARROW	4	12	0.10	4.80
PED. SIGNAL			1.00	
CONTROLLER	1	100	1.00	100.00
FLASHER				
TOTAL =				312.05

EXISTING SERVICE LOCATION
 ENERGY COSTS TO:
 ENERGY SUPPLY CONTACT: JOHN D. PRIBICH
 PHONE: 630-437-2212
 COMPANY: COMM. EDISON



REVISIONS		ILLINOIS DEPARTMENT OF TRANSPORTATION TEMPORARY CABLE PLAN AND TEMPORARY PHASE DESIGNATION DIAGRAM ILL 60 & I-94 SOUTHBOUND RAMPS STAGES 1, 1A, 2, 3, 3A, 4
NAME	DATE	

S.N. DESIGNED BY: JM
 SCALE: 1" = 20' DRAWN BY: PK
 DATE: MAY 8, 2007 CHECKED BY: CK