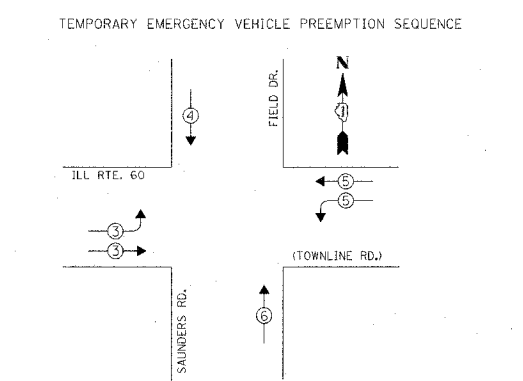
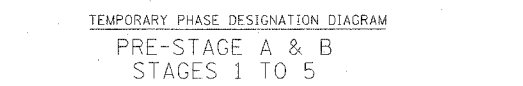
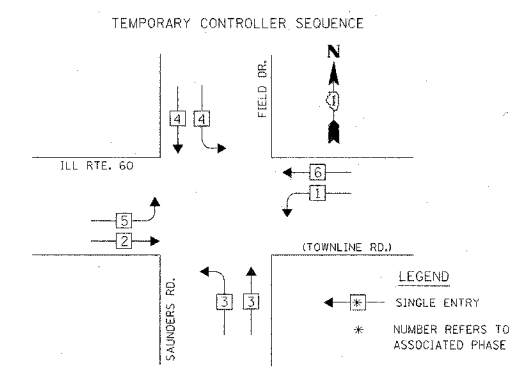


F.A.P. RTE.	SECTION	COUNTY	TOTAL SHEETS	SHEET NO.
335	119R-2	LAKE	439	224
STA. 432+63.12		TO STA. 470+56.84		
FER. ROAD DIST. NO.		ILLINOIS FED. AID PROJECT		

60801

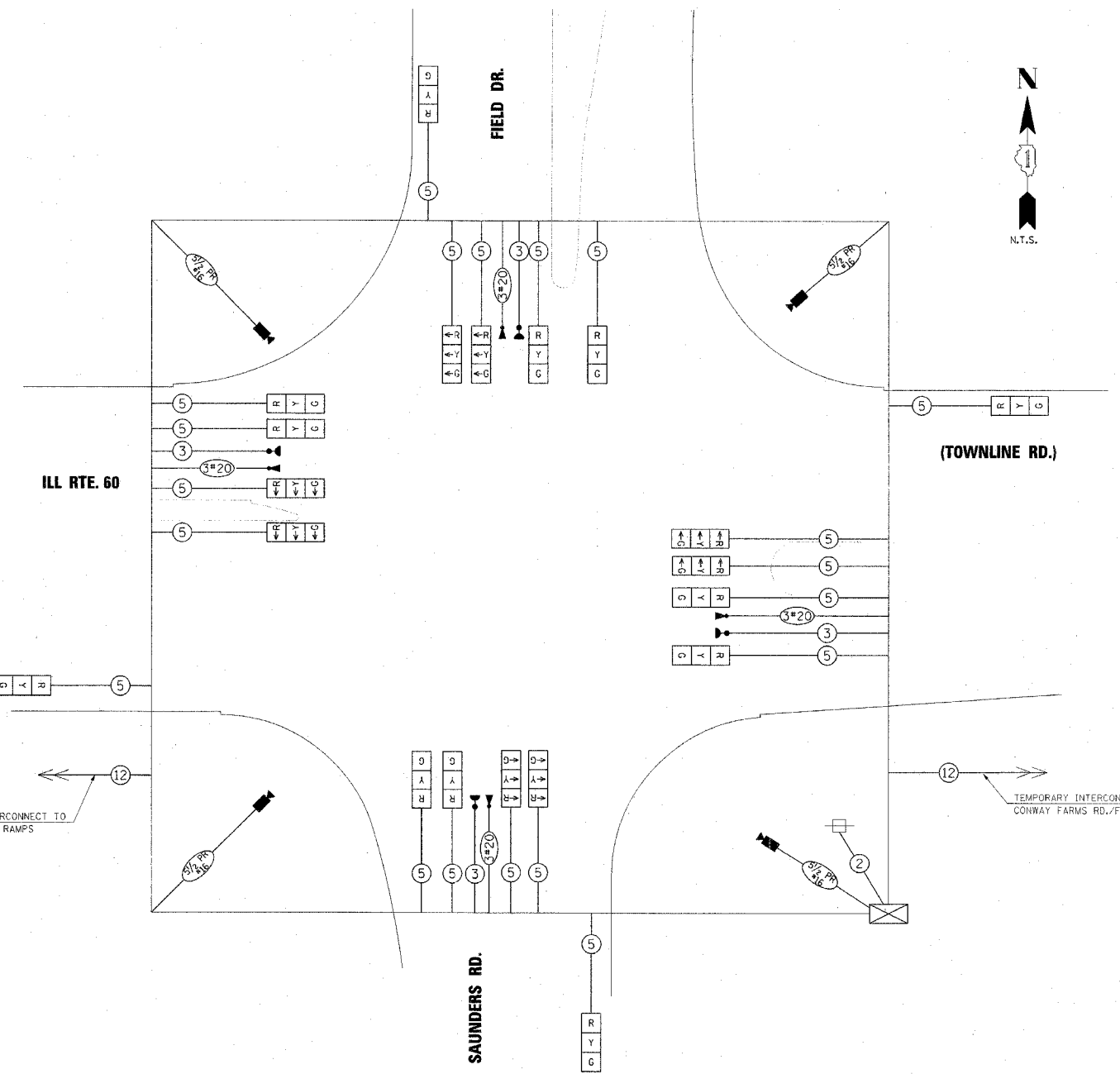


EMERGENCY VEHICLE PREEMPTOR	3	4	5	6
MOVEMENT	→	↓	←	↑

I.D.O.T. TRAFFIC SIGNAL INSTALLATION ELECTRICAL SERVICE REQUIREMENTS					TOTAL WATTAGE
TYPE	NO. OF LAMPS	XINCAND.	LED	% OPERATION	
SIGNAL (RED)	20		17	0.50	170.00
(YELLOW)	20		25	0.25	125.00
(GREEN)	20		15	0.25	75.00
ARROW	-		12	0.10	-
PED. SIGNAL	-		25	1.00	-
CONTROLLER	1		100	1.00	100.00
ILLUM. SIGN	-		25	0.05	-
FLASHER	-			0.50	-
ENERGY COSTS TO:					TOTAL = 470.00

ILLINOIS DEPARTMENT OF TRANSPORTATION  
 DIVISION OF HIGHWAY/DISTRICT 1  
 201 WEST CENTER COURT/SCHAUMBURG, ILLINOIS 60196-1096  
 ENERGY SUPPLY: CONTACT: DOTIE PROSEN  
 PHONE: 847-816-5496  
 COMPANY: COMMONWEALTH EDISON

FOUNDATION (DEPTH)	FT. (m)	CABLE SLACK	FT. (m)	VERTICAL	FT. (m)
TYPE A - POST	4 (1.2)	HANDHOLE	6.5 (2.0)	ALL FOUNDATIONS	3.5 (1.0)
D - CONTROLLER	4 (1.2)	DOUBLE HANDHOLE	13 (4.0)	MAST ARM (L) POLE	20'±L-2"
C - M. ARM POLE		SIGNAL POST	2 (1.0)	(6m±-0.6m)±	
24" (600mm)	10 (3.0)	CONTROLLER CAB.	1 (0.3)	BRACKET MOUNTED	13 (4.0)
30" (750mm)	15 (4.6)	FIBER OPTIC	13 (4.0)	PED. PUSHBUTTON	4 (1.2)
		ELECTRIC SERVICE	1 (0.3)	ELECTRIC SERVICE	13.5 (4.1)
		GROUND CABLE	1 (0.3)	SERVICE TO GROUND	13.5 (4.1)
				POST MOUNTED	6 (1.8)



- TEMPORARY CABLE DIAGRAM LEGEND
- [R] TEMPORARY TRAFFIC SIGNAL SECTION OR PEDESTRIAN SIGNAL SECTION 12" (300mm)
  - [CAB] TEMPORARY CONTROLLER CABINET
  - [SVC] TEMPORARY SERVICE INSTALLATION
  - (5) INDICATES NUMBER OF CONDUCTORS IN CABLE. ALL CONDUCTORS TO BE NUMBER 14 AWG WIRE UNLESS OTHERWISE NOTED.
  - [EVL] EMERGENCY VEHICLE LIGHT DETECTOR
  - [CB] CONFIRMATION BEACON
  - [VLD] VEHICLE DETECTOR, INDUCTION LOOP
  - [PBD] PEDESTRIAN PUSHBUTTON DETECTOR
  - [PS] 12" (300mm) PEDESTRIAN SIGNAL SECTION
  - [MVP] MACHINE VISION PROCESSOR

- CONSTRUCTION NOTES:
1. COMPLETE VIDEO DETECTION SYSTEM SHALL BE INCLUDED IN THE COST OF TEMPORARY TRAFFIC SIGNAL INSTALLATION.
  2. VIDEO DETECTION ZONES ARE TO BE POSITIONED AS REQUIRED TO MATCH THE LANE CONFIGURATIONS OF EACH CONSTRUCTION STAGE OR AS DIRECTED BY THE ENGINEER.

NOTE:  
 THE TRAFFIC SIGNAL CONTROLLER EQUIPMENT FOR THIS PROJECT SHALL BE "EAGLE" TO MATCH THE EXISTING ADJACENT SYSTEM.

RESTORATION OF WORK AREA, RESTORATION OF THE TRAFFIC SIGNAL WORK AREA SHALL BE INCIDENTAL TO THE RELATED PAY ITEM SUCH AS FOUNDATION, CONDUIT, HANDHOLE, TRENCH AND BACKFILL, ETC., AND NO EXTRA COMPENSATION SHALL BE ALLOWED. ALL ROADWAY SURFACES SUCH AS SHOULDERS, MEDIANS, SIDEWALKS, PAVEMENT, ETC. SHALL BE REPLACED IN KIND. ALL DAMAGE TO MOWED LAWNS SHALL BE REPLACED WITH AN APPROVED SOD, AND ALL DAMAGE TO UNMOWED FIELDS SHALL BE SEEDED IN ACCORDANCE WITH STANDARD SPECIFICATIONS 252 AND 250 RESPECTIVELY.

REVISIONS		ILLINOIS DEPARTMENT OF TRANSPORTATION	
NAME	DATE	ILLINOIS RTE 60 OVER I-94	
		TEMPORARY CABLE PLAN, TEMPORARY PHASE DESIGNATION DIAGRAM AND TEMPORARY EMERGENCY VEHICLE PREEMPTION SEQUENCE	
		PRE-STAGE A, B AND STAGES 1 TO 5	
		ILL. RTE. 60 (TOWNLINE RD.) AND SAUNDERS RD./FIELD DR.	
		SCALE: N.T.S.	DRAWN BY: FCP
		DATE: MAY 8, 2007	CHECKED BY: GMZ

CHRISTOPHER B. BURKE ENGINEERING LTD.  
 8675 West Higgins Road, Suite 600  
 Rosemont, Illinois 60018  
 (847) 823-0500

H:\LakeForest\03192\Traffic.Design\008.\*cb-stages 1-5-saunders.dgn  
 5/22/2007 9:20:41 AM