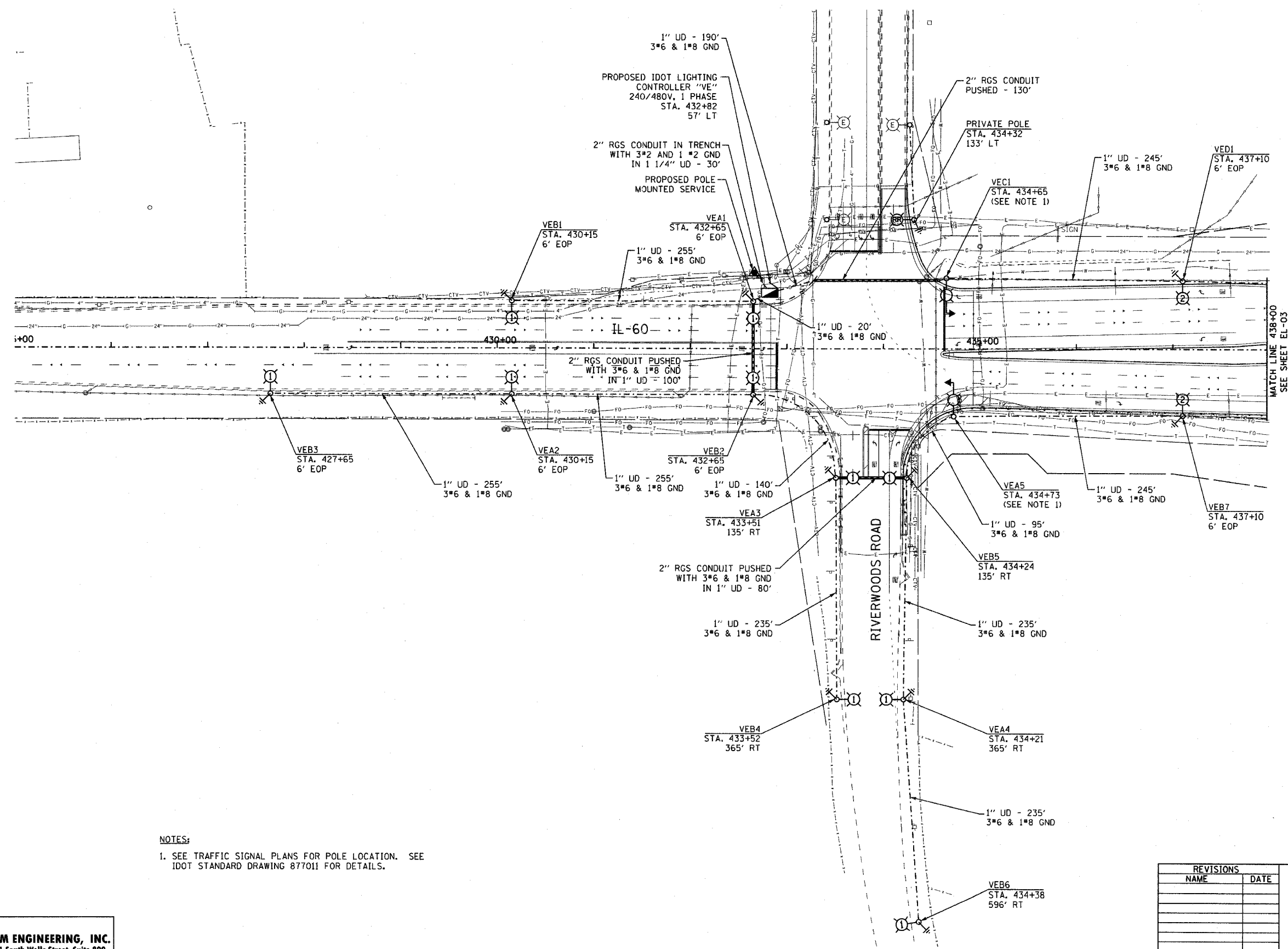


F.A.P. RTE.	SECTION	COUNTY	TOTAL SHEETS	SHEET NO.
335	119R-2	LAKE	439	236
STA. 425+00		TO STA. 438+00		
FED. ROAD DIST. NO. ILLINOIS		FED. AID PROJECT		60B01



NOTES:
 1. SEE TRAFFIC SIGNAL PLANS FOR POLE LOCATION. SEE IDOT STANDARD DRAWING 877011 FOR DETAILS.

EJM ENGINEERING, INC.
 411 South Wells Street Suite 800
 Chicago, Illinois 60607

REVISIONS	
NAME	DATE

ILLINOIS DEPARTMENT OF TRANSPORTATION
 ILLINOIS RTE 60 OVER I-94
 PROPOSED ROADWAY LIGHTING PLAN
 STA. 425+00 TO STA. 438+00

S.N. _____ DESIGNED BY: JDM
 SCALE: 1"=50'-0" DRAWN BY: JDM
 DATE: MAY 8, 2007 CHECKED BY: RES

SHEET EL-02 OF 13