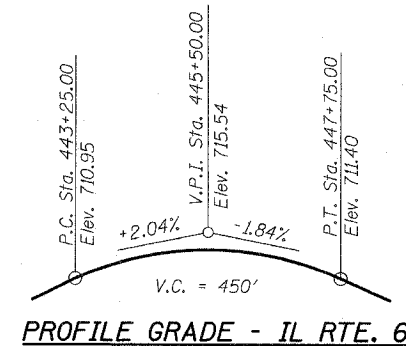
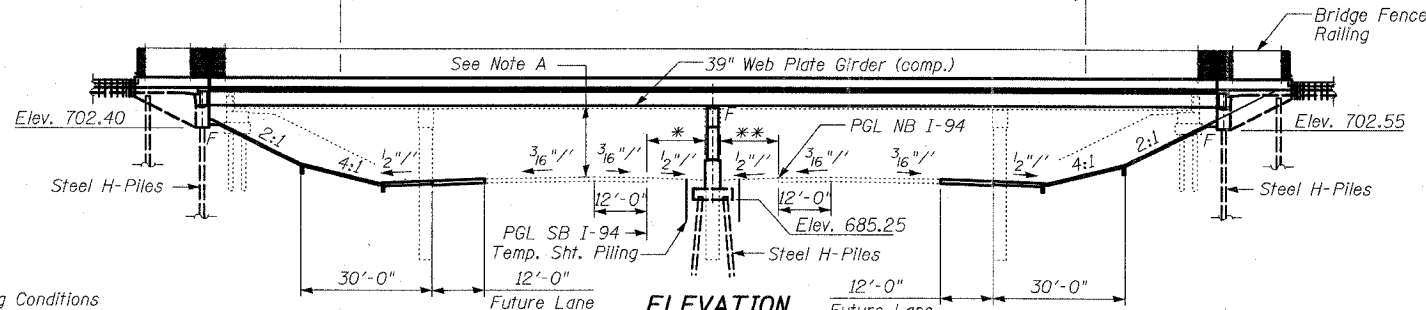


Benchmark: BM #203 - Set Square on S.E. corner of S.E. end of south handrail of Illinois Route 60 Bridge over I-94. Sta. 446+76.89 @ IL 60. Offset 35.70' Right, Elev. 713.54

Existing Structure: Existing Structure Number 049-9902 built in 1958 as S.B.I. Route 59A by the Illinois State Toll Highway Commission is a 4-span continuous PPC I-Beam structure with an out-to-out deck width of 64'-4" and overall length of 222'-2" bk. to bk. abutments. The substructure consists of concrete pile-supported abutments and PPC cylindrical pile bent piers. The structure was widened in 1988 to 71'-6" out-to-out deck. The road shall be kept open during structure replacement by stage construction.

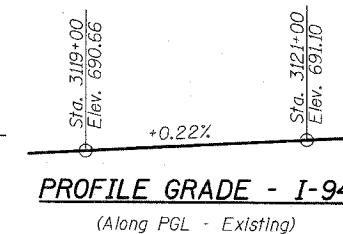
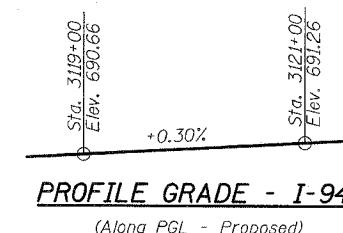
Salvage: None

Limits of Protective Shield - 170'-0"



F.A.P. RTE.	SECTION	COUNTY	TOTAL SHEETS	SHEET NO.
335	119R-2	LAKE	439	248
STA. 432+83.12		TO STA. 470+56.84		
FED. ROAD DIST. NO.	ILLINOIS	FED. AID PROJECT		

60B01



Note A:  
16'-8 1/2" Minimum Vertical Clearance for Existing Conditions  
16'-6 1/4" Minimum Vertical Clearance after I-94 Reconstruction and Widening



Signed *Phillip D. Frey*  
Phillip D. Frey, S.E. Ill. Lic. No. 081-004826  
Expires 11-30-2008  
Date 5-8-07  
for drawings S-1 thru S-53

DESIGN SPECIFICATIONS

2002 AASHTO

LOADING HS20-44

Allow 50 psf for future wearing surface

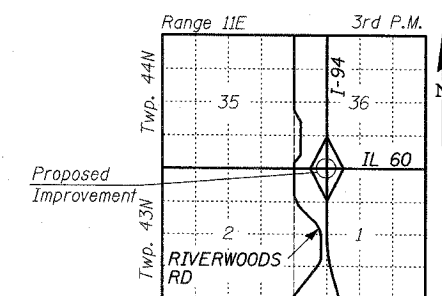
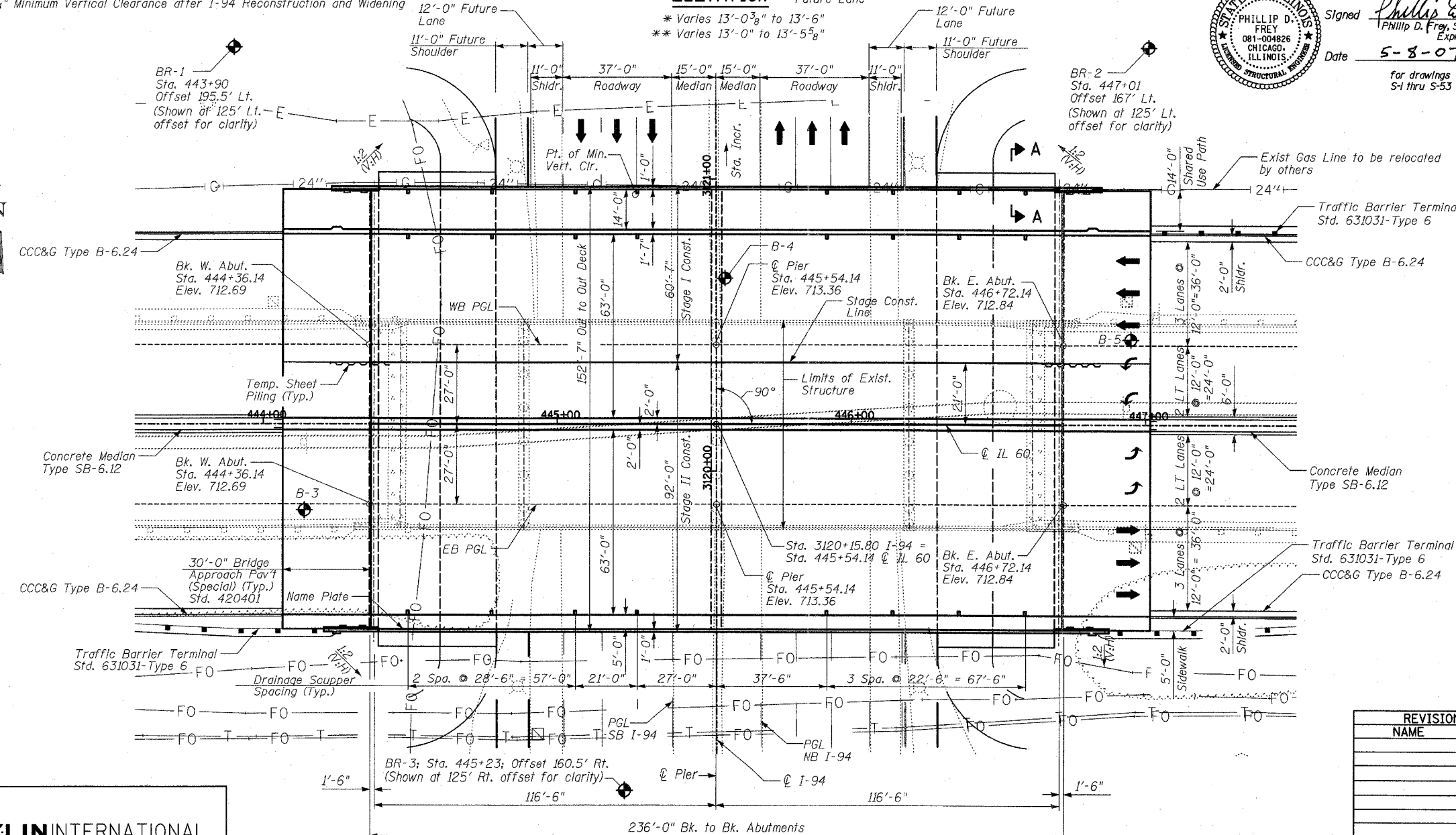
DESIGN STRESSES

FIELD UNITS

$f'_c = 3,500$  psi  
 $f_y = 60,000$  psi (reinforcement)  
 $f_y = 50,000$  psi (M270 Grade 50)

SEISMIC DATA

Seismic Performance Category (SPC) = A  
Bedrock Acceleration Coefficient (A) = 0.035g  
Site Coefficient (S) = 1.0



REVISIONS	
NAME	DATE

ILLINOIS DEPARTMENT OF TRANSPORTATION  
GENERAL PLAN  
ILLINOIS 60 OVER I-94  
F.A.P. RTE. 335 SECTION 119R-2  
LAKE COUNTY STA. 445+54.14  
S.N. 049-2012 ISTHA BRIDGE NO. 407  
DESIGNED BY: SP  
DRAWN BY: SP  
CHECKED BY: PF  
SCALE:  
DATE: MAY 8, 2007

TYLIN INTERNATIONAL

SHEET S-1 OF S-53

P:\60245811\60\structure\trn\IL60BRGP.DGN 05/03/2007 04:22:01 PM