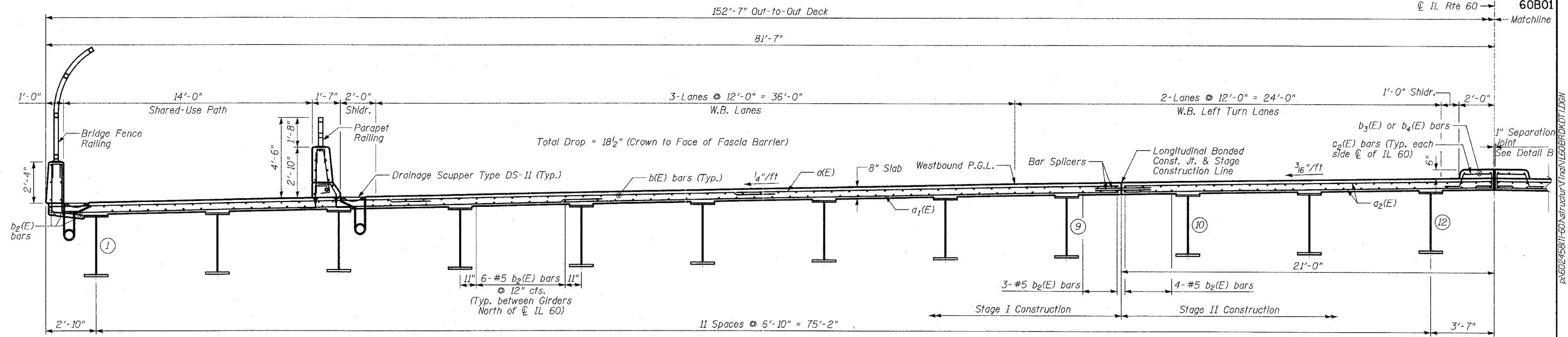
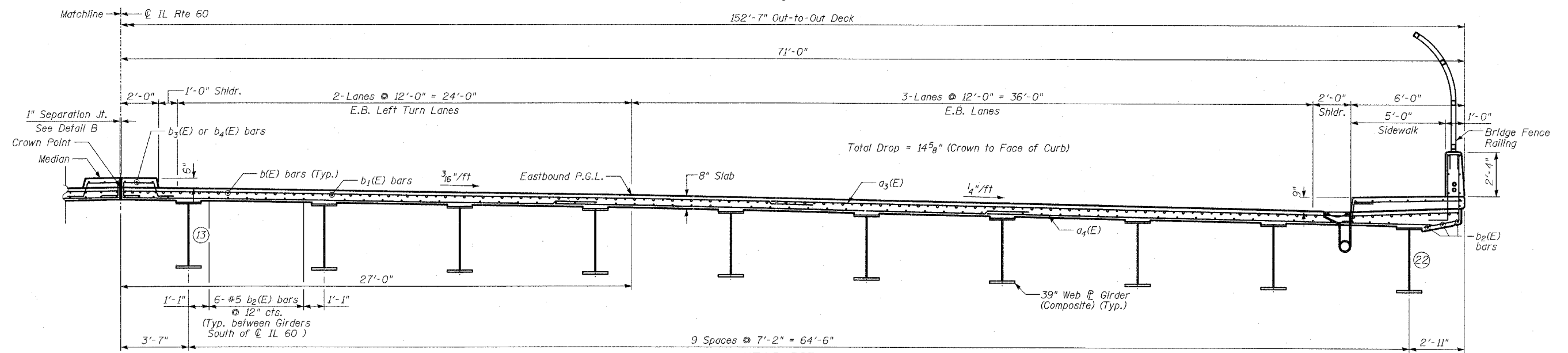


F.A.P. RTE.	SECTION	COUNTY	TOTAL SHEETS	SHEET NO.
335	119R-2	LAKE	439	263
STA. 432+83.12		TO STA. 470+56.84		
FED. ROAD DIST. NO.	ILLINOIS	FED. AID PROJECT		

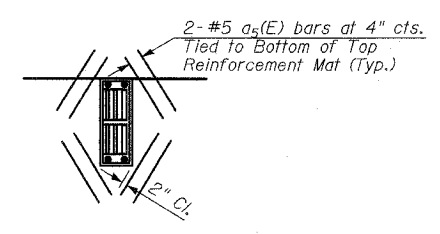
60B01  
 IL Rte 60  
 Matchline



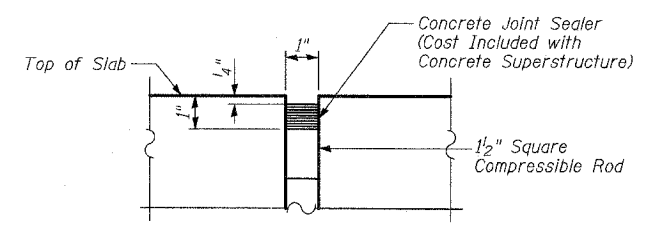
NEAR MIDSPAN  
**WESTBOUND SECTION THRU DECK**  
 (Looking East)



NEAR PIER  
**EASTBOUND SECTION THRU DECK**  
 (Looking East)



**DETAIL A**



**DETAIL B**

REVISIONS	
NAME	DATE

SHEET S-16 OF S-53  
 ILLINOIS DEPARTMENT OF TRANSPORTATION  
**DECK CROSS SECTION**  
 ILLINOIS 60 OVER I-94  
 F.A.P. RTE. 335 SECTION 119R-2  
 LAKE COUNTY STA. 445+54.14  
 S.N. 049-2012 ISTHA BRIDGE NO. 407  
 DESIGNED BY: SNB  
 DRAWN BY: SNB  
 SCALE:  
 DATE: MAY 8, 2007  
 CHECKED BY: SP

**TYLIN INTERNATIONAL**

P:\60245611-60\Structural\Ina\LEGBR007.DWG 04/30/06 PM