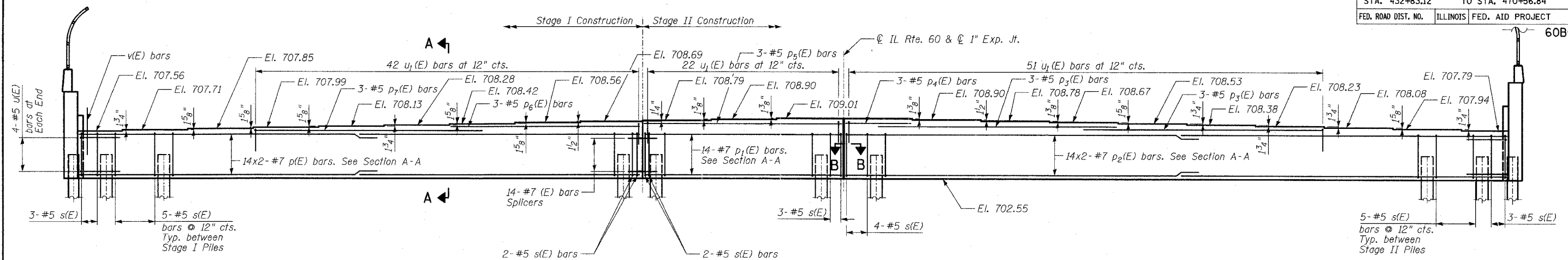


F.A.P. RTE.	SECTION	COUNTY	TOTAL SHEETS	SHEET NO.
335	119R-2	LAKE	439	277
STA. 432+83.12		TO STA. 470+56.84		
FED. ROAD DIST. NO.	ILLINOIS	FED. AID PROJECT		
		60B01		



**PILE DATA**

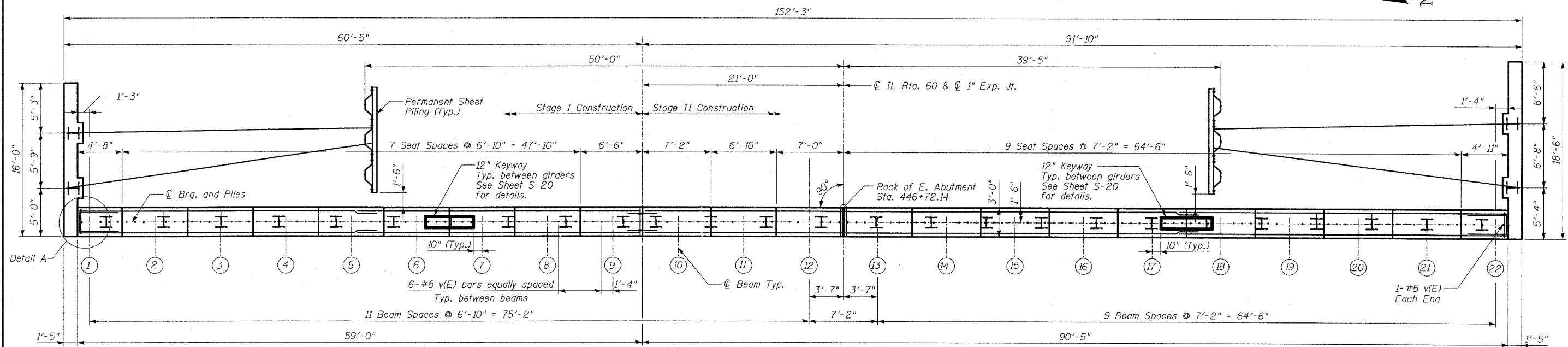
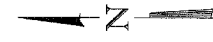
Type: Steel HP 14x73  
 Nominal Required Bearing: 480 Kips  
 Allowable Resistance Available: 160 Kips  
 Estimated Length: 56'-6" Ft  
 No. Production Piles: 25  
 No. Test Piles: 1

**PILE DATA FOR WINGWALLS**

Type: Steel HP 14x73  
 Nominal Required Bearing: 480 Kips  
 Allowable Resistance Available: 160 Kips  
 Estimated Length: 56'-0" Ft  
 No. Production Piles: 4  
 No. Test Piles: 0

**ELEVATION**

(Looking East)



**PLAN**

**MINIMUM BAR LAPS**

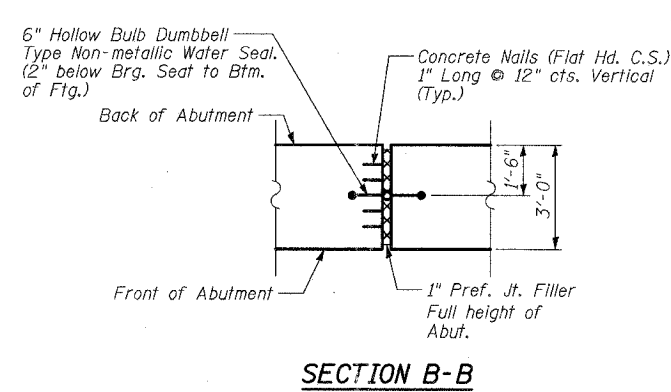
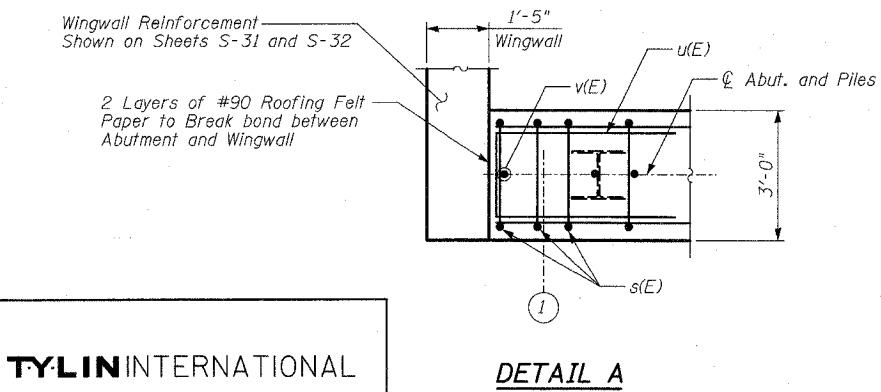
Bar	Lap
#5	2'-2"
#7	4'-10"

**NOTES**

1. Pour steps monolithically with cap.
2. For Pile Layout and Spacing See Sheet S-3.
3. See Sheet S-32 for Section A-A.
4. V(E) bars shall be cast in place and not mucked-in after the pile cap is placed.
5. See Sheet S-20 for Keyway details.

REVISIONS	
NAME	DATE

SHEET S-30 OF S-53  
 ILLINOIS DEPARTMENT OF TRANSPORTATION  
**EAST ABUTMENT**  
 ILLINOIS 60 OVER I-94  
 F.A.P. RTE. 335 SECTION 119R-2  
 LAKE COUNTY STA. 445+54.14  
 S.N. 049-2012 ISTHA BRIDGE NO. 407  
 SCALE:                      DRAWN BY: TB  
 DATE: MAY 8, 2007                      CHECKED BY: SP



**TYLIN INTERNATIONAL**

**DETAIL A**

**SECTION B-B**

05/03/2007 04:30:45 PM