

F.A.P. RTE.	SECTION	COUNTY	TOTAL SHEETS	SHEET NO.
335	119R-2	LAKE	439	279
STA. 432+83.12		TO STA. 470+56.84		
FED. ROAD DIST. NO.		ILLINOIS FED. AID PROJECT		

60B01

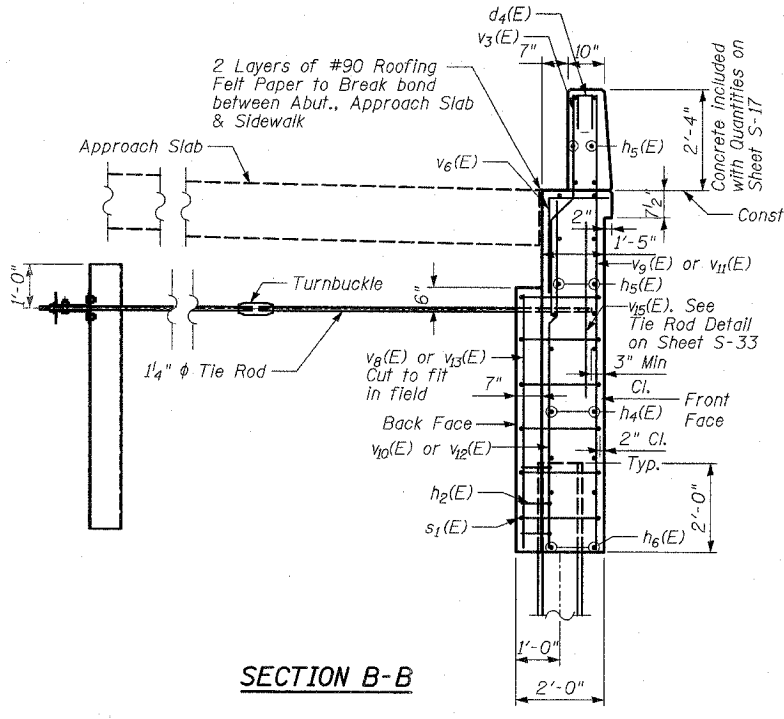
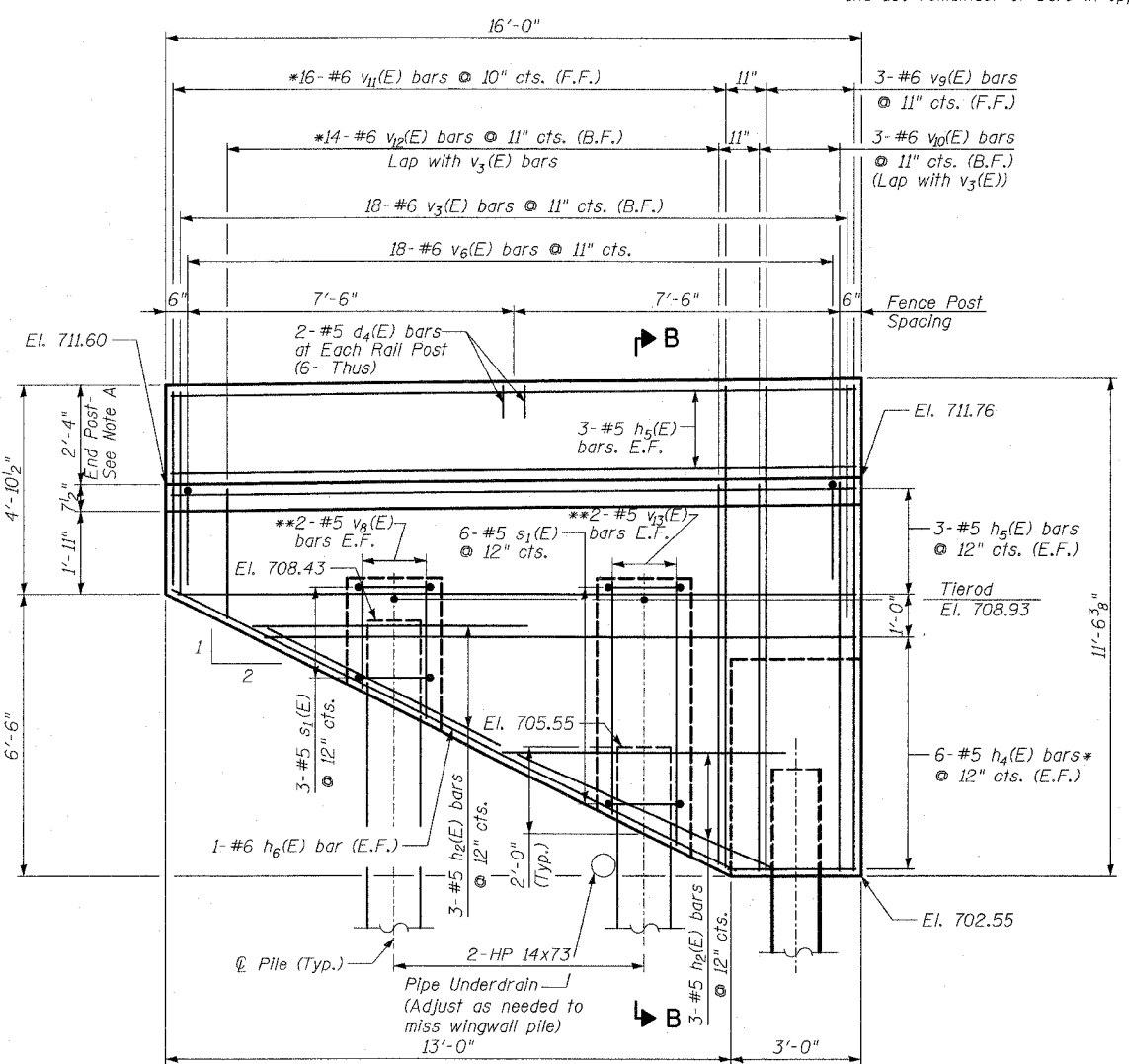
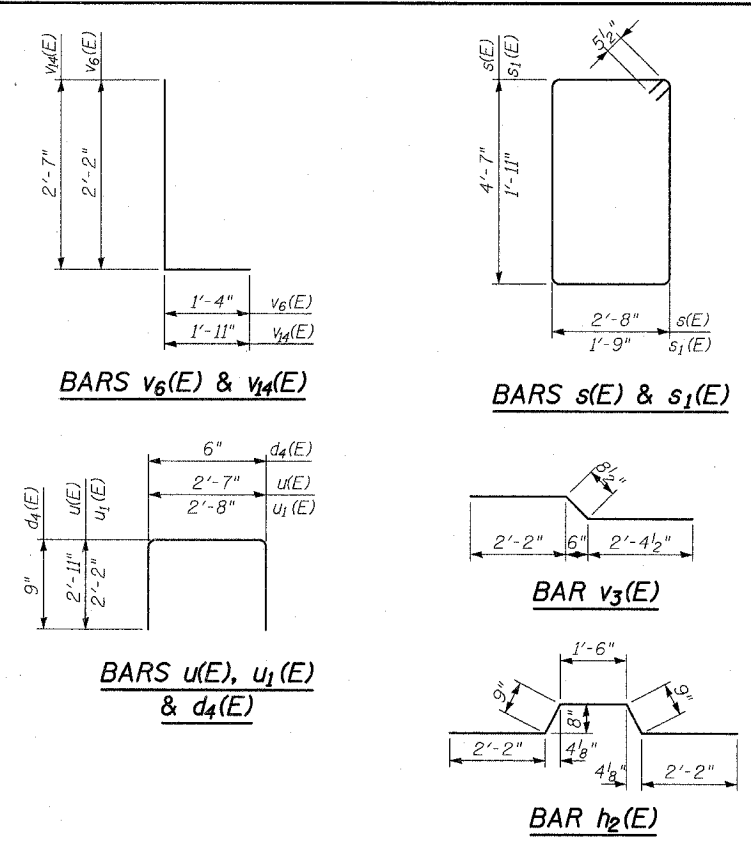
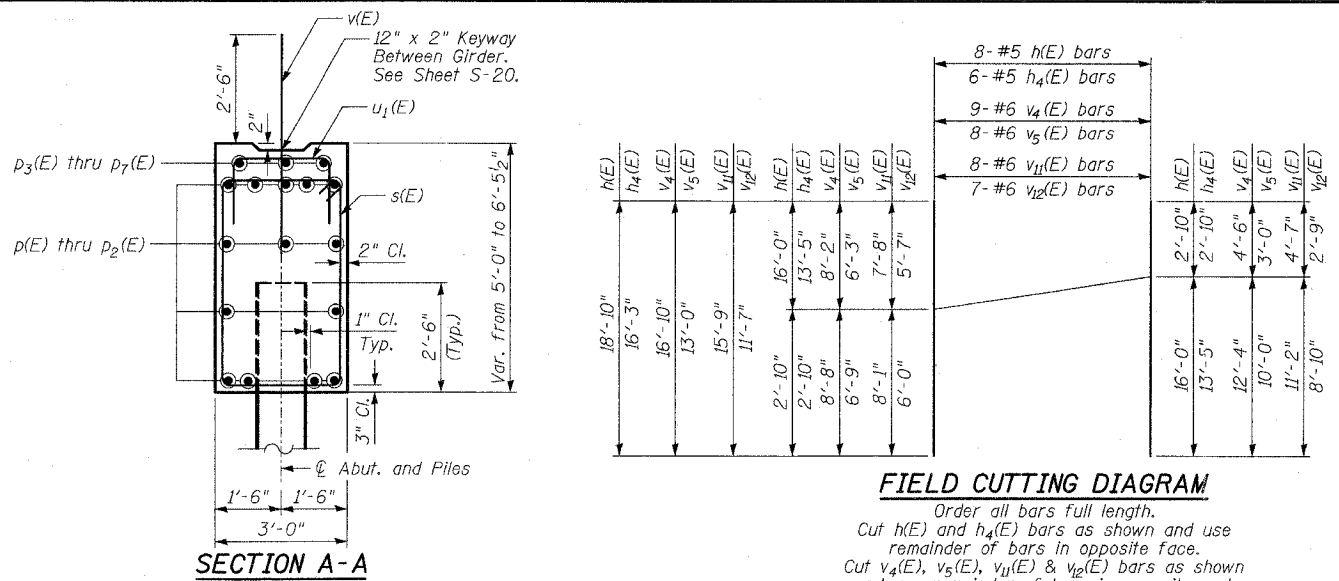
BILL OF MATERIAL

Bar	No.	Size	Length	Shape
d ₄ (E)	12	#5	2'-0"	[U-shape]
d ₆ (E)	6	#6	7'-2"	[U-shape]
h(E)	8	#5	18'-10"	[I-shape]
h ₁ (E)	12	#5	18'-2"	[I-shape]
h ₂ (E)	12	#5	7'-4"	[I-shape]
h ₃ (E)	2	#6	17'-3"	[I-shape]
h ₄ (E)	6	#5	16'-3"	[I-shape]
h ₅ (E)	12	#5	15'-8"	[I-shape]
h ₆ (E)	2	#6	14'-6"	[I-shape]
p(E)	28	#7	31'-9"	[I-shape]
p ₁ (E)	14	#7	20'-8"	[I-shape]
p ₂ (E)	28	#7	37'-0"	[I-shape]
p ₃ (E)	6	#5	23'-8"	[I-shape]
p ₄ (E)	3	#5	7'-0"	[I-shape]
p ₅ (E)	3	#5	20'-8"	[I-shape]
p ₆ (E)	3	#5	20'-0"	[I-shape]
p ₇ (E)	3	#5	22'-8"	[I-shape]
s(E)	132	#5	15'-5"	[I-shape]
s ₁ (E)	19	#5	8'-3"	[I-shape]
u(E)	4	#5	8'-5"	[I-shape]
u ₂ (E)	115	#5	7'-0"	[I-shape]
v(E)	128	#8	5'-0"	[I-shape]
v ₁ (E)	3	#6	12'-4"	[I-shape]
v ₂ (E)	3	#6	10'-0"	[I-shape]
v ₃ (E)	39	#6	5'-3"	[I-shape]
v ₄ (E)	9	#6	16'-10"	[I-shape]
v ₅ (E)	8	#6	13'-0"	[I-shape]
v ₆ (E)	39	#6	3'-6"	[I-shape]
v ₇ (E)	4	#5	6'-4"	[I-shape]
v ₈ (E)	8	#5	3'-0"	[I-shape]
v ₉ (E)	3	#6	11'-2"	[I-shape]
v ₁₀ (E)	3	#6	8'-10"	[I-shape]
v ₁₁ (E)	8	#6	15'-9"	[I-shape]
v ₁₂ (E)	7	#6	11'-7"	[I-shape]
v ₁₃ (E)	4	#5	5'-10"	[I-shape]
v ₁₄ (E)	3	#6	4'-6"	[I-shape]
v ₁₅ (E)	4	#10	4'-0"	[I-shape]

Porous Granular Embankment, Special	Cu Yd	367
Structure Excavation	Cu Yd	174
Concrete Structures	Cu Yd	112
Reinforcement Bars, Epoxy Coated	Pound	12,290
Furnishing Steel Piles, HP14x73	Foot	1,629
Driving Piles	Foot	1,629
Test Pile Steel HP14x73	Each	1
Pile Shoes	Each	30
Geocomposite Wall Drain	Sq Yd	143
Bar Splicers	Each	14
Permanent Steel Sheet Piling	Sq Ft	264
Concrete Encasement	Cu Yd	16

PA-602458111-60YStructural/Ind/60BRebut3.DGN

SHEET S-32 OF S-53



LEGEND

E.F. - Denotes Each Face.
B.F. - Denotes Back Face.
F.F. - Denotes Front Face.

NOTES

- Quantity of Concrete in End Post Included with Concrete Superstructure on Sheet S-17.
- For Details on Bar Splicers, See Sheet S-38.
- For Details on Piles and Concrete Encasement, See Sheet S-39. Concrete Encasement shall be used on each Abutment and Wingwall Pile.

REVISIONS	
NAME	DATE

ILLINOIS DEPARTMENT OF TRANSPORTATION
EAST ABUTMENT DETAILS - II
ILLINOIS 60 OVER I-94
F.A.P. RTE. 335 SECTION 119R-2
LAKE COUNTY STA. 445+54.14
S.N. 049-2012 ISTHA BRIDGE NO. 407
DESIGNED BY: TB
DRAWN BY: TB
CHECKED BY: SP

SCALE:
DATE: MAY 8, 2007

TYLIN INTERNATIONAL