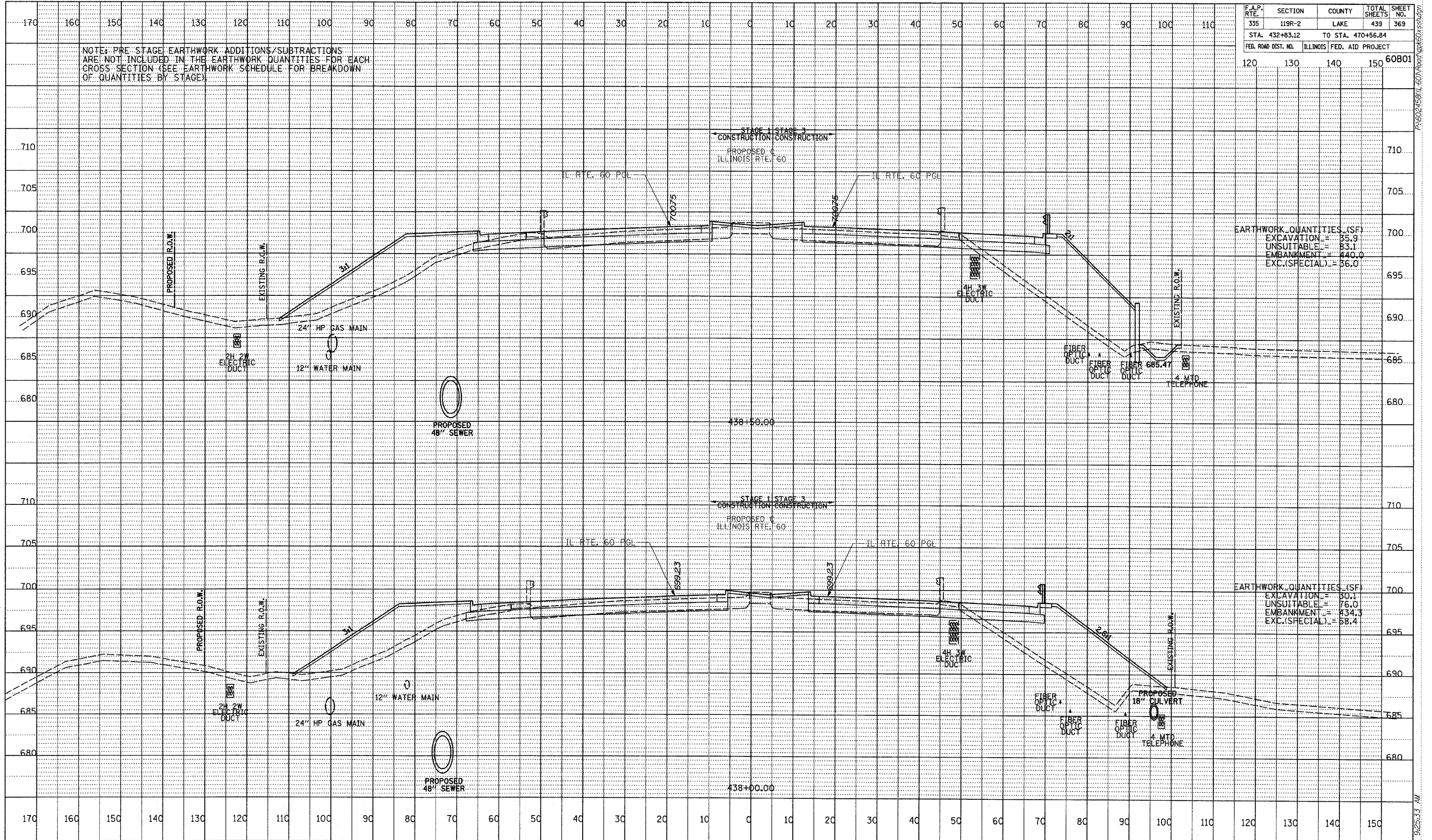


F.A.P. RTE.	SECTION	COUNTY	TOTAL SHEETS	SHEET NO.
335	119R-2	LAKE	439	369
STA. 432+83.12		TO STA. 470+56.84		
FED. ROAD DIST. NO.	ILLINOIS	FED. AID PROJECT		
120	130	140	150	60B01

NOTE: PRE-STAGE EARTHWORK ADDITIONS/SUBTRACTIONS ARE NOT INCLUDED IN THE EARTHWORK QUANTITIES FOR EACH CROSS SECTION (SEE EARTHWORK SCHEDULE FOR BREAKDOWN OF QUANTITIES BY STAGE).



EARTHWORK QUANTITIES (SF)

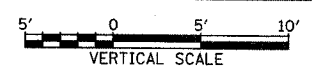
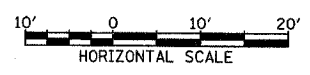
EXCAVATION	=	55.9
UNSUITABLE	=	83.1
EMBANKMENT	=	440.0
EXC.(SPECIAL)	=	36.0

EARTHWORK QUANTITIES (SF)

EXCAVATION	=	30.1
UNSUITABLE	=	76.0
EMBANKMENT	=	434.3
EXC.(SPECIAL)	=	58.4

PROFILE	DATE
BY	
REVISION	
NO.	
STRUCTURE	
NOTATION	
CHNO	

TYL INTERNATIONAL



ILLINOIS RTE. 60 (TOWNLIN RD)
STA. 438+00 TO STA. 438+50

5/7/2007 9:25:33 AM