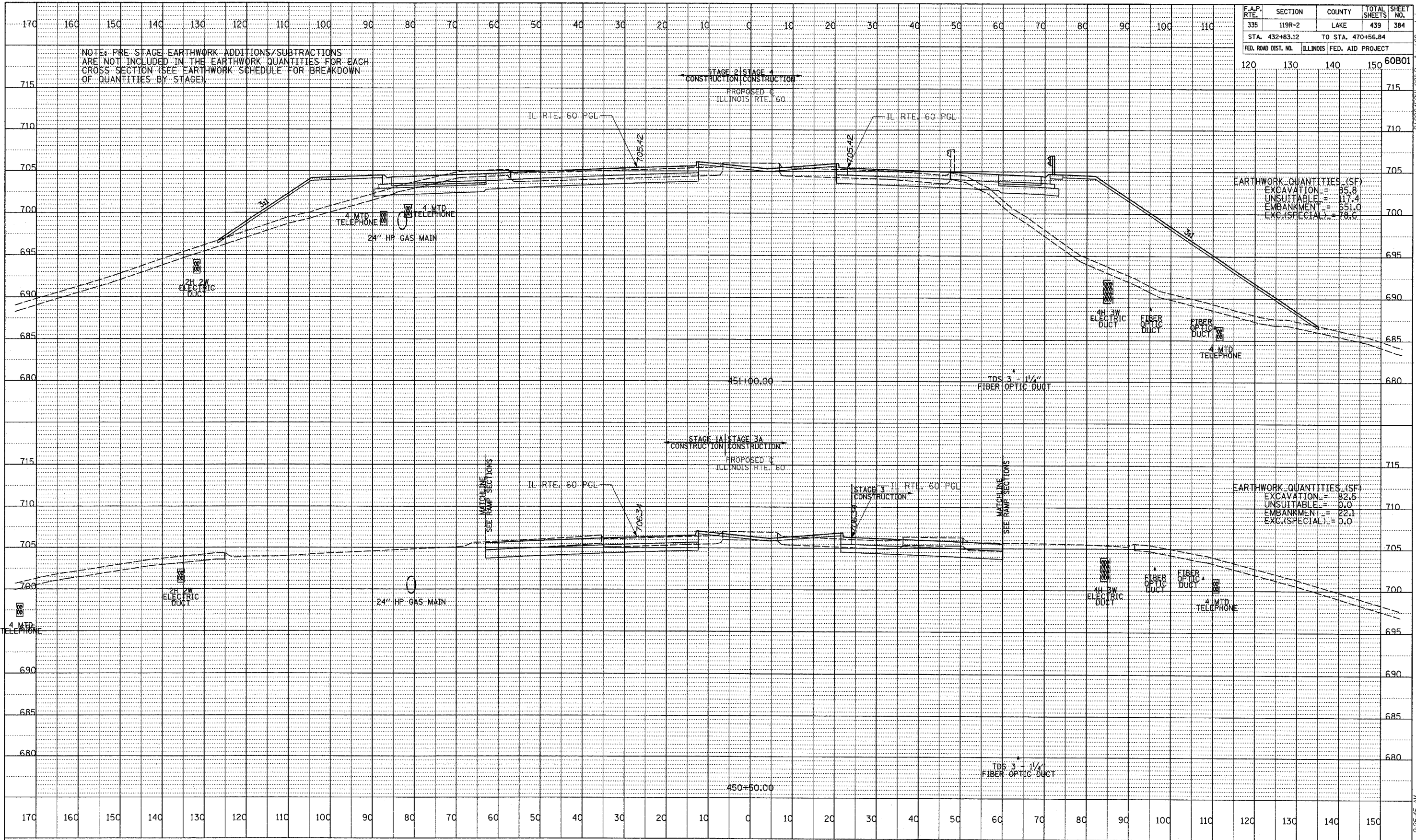


F.A.P. RTE.	SECTION	COUNTY	TOTAL SHEETS	SHEET NO.
335	119R-2	LAKE	439	384
STA. 432+83.12		TO STA. 470+56.84		
FED. ROAD DIST. NO.		ILLINOIS FED. AID PROJECT		

120 130 140 150 60B01

NOTE: PRE-STAGE EARTHWORK ADDITIONS/SUBTRACTIONS ARE NOT INCLUDED IN THE EARTHWORK QUANTITIES FOR EACH CROSS SECTION (SEE EARTHWORK SCHEDULE FOR BREAKDOWN OF QUANTITIES BY STAGE)



DATE	BY
REVISION	BY
NOTED	BY
GRADES CHECKED	BY
STRUCTURE NOTATIONS CHECKED	BY
NO.	

TYLIN INTERNATIONAL



ILLINOIS RTE. 60 (TOWNLIN RD)
STA. 450+50 TO STA. 451+00

P:\602458\IL-600\Road\grd\60xss\ad01 9:25:45 AM 5/7/2007