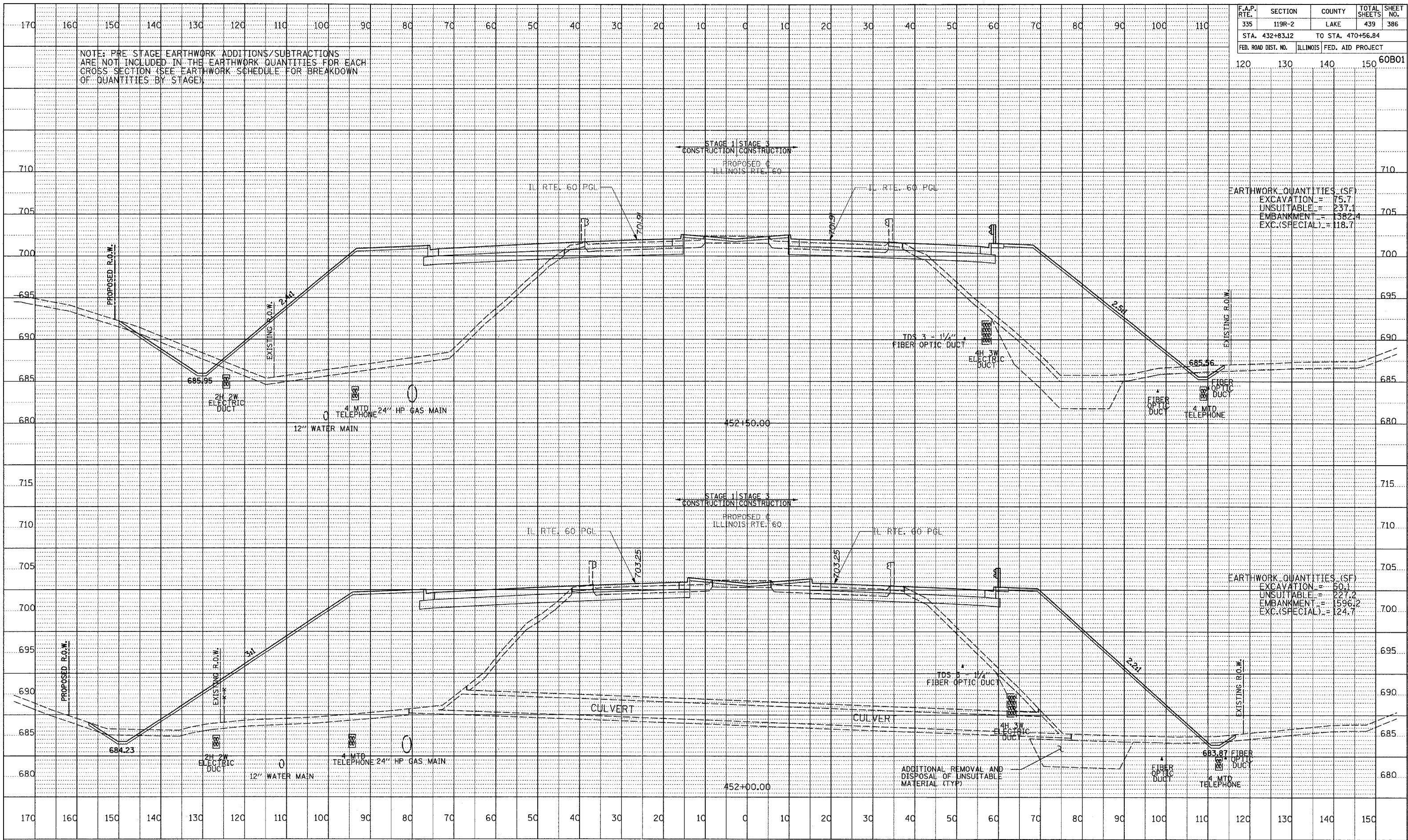


F.A.P. RTE.	SECTION	COUNTY	TOTAL SHEETS	SHEET NO.
335	119R-2	LAKE	439	386
STA. 432+83.12		TO STA. 470+56.84		
FED. ROAD DIST. NO.	ILLINOIS	FED. AID PROJECT		
			120	130
			140	150
				60B01

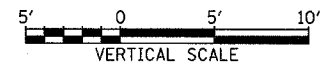
NOTE: PRE STAGE EARTHWORK ADDITIONS/SUBTRACTIONS ARE NOT INCLUDED IN THE EARTHWORK QUANTITIES FOR EACH CROSS SECTION (SEE EARTHWORK SCHEDULE FOR BREAKDOWN OF QUANTITIES BY STAGE)

EARTHWORK QUANTITIES (SF)	
EXCAVATION	= 75.7
UNSUITABLE	= 237.1
EMBANKMENT	= 1382.4
EXC.(SPECIAL)	= 118.7

EARTHWORK QUANTITIES (SF)	
EXCAVATION	= 50.1
UNSUITABLE	= 227.2
EMBANKMENT	= 1596.2
EXC.(SPECIAL)	= 124.7



TYLIN INTERNATIONAL



ILLINOIS RTE. 60 (TOWNLIN RD)
STA. 452+00 TO STA. 452+50

6/13/2007 1:35:56 PM