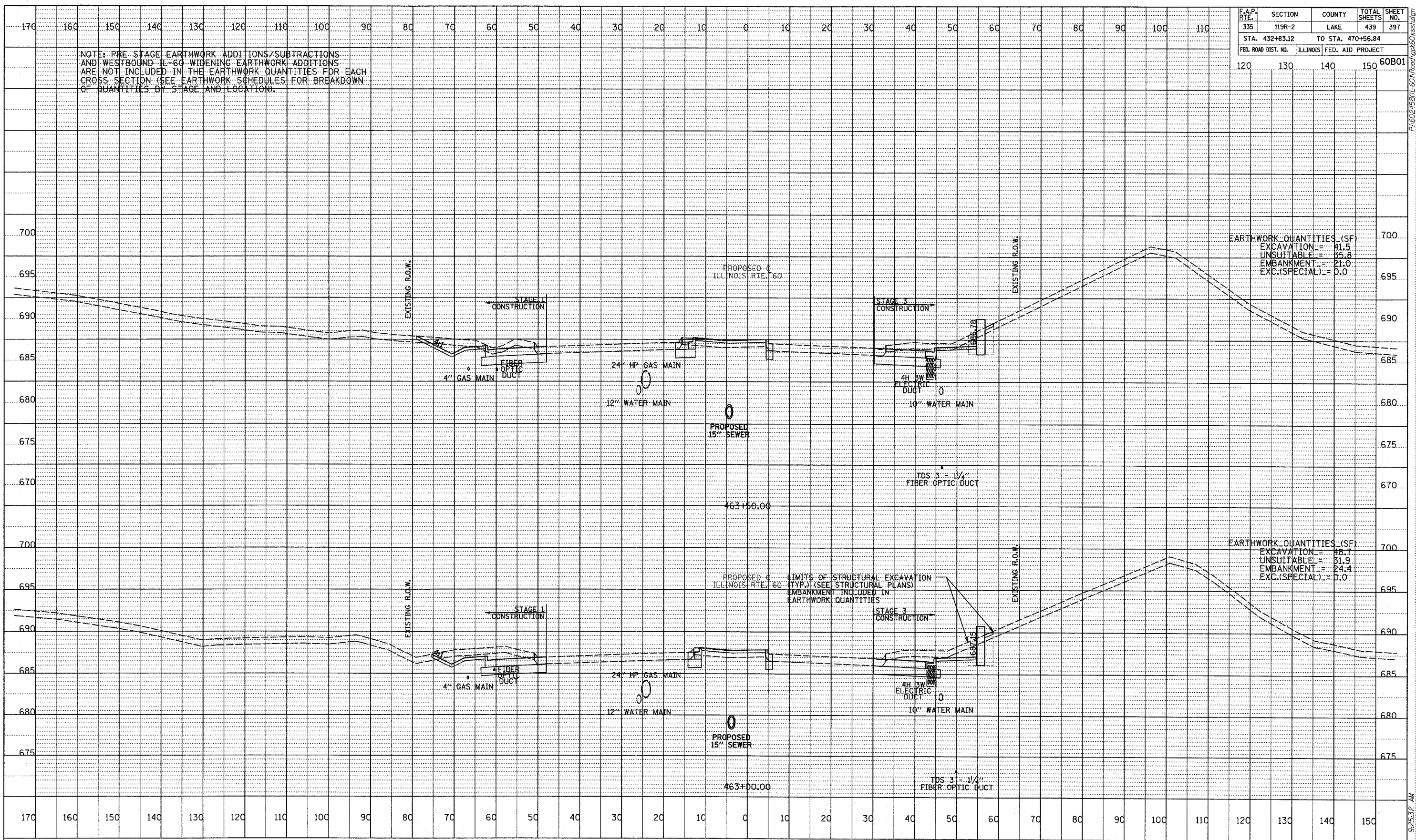


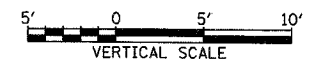
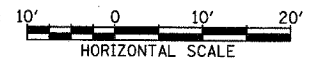
F.A.P. RTE.	SECTION	COUNTY	TOTAL SHEETS	SHEET NO.
335	119R-2	LAKE	439	397
STA. 432+83.12 TO STA. 470+56.84				
FED. ROAD DIST. NO.	ILLINOIS	FED. AID PROJECT		
			120	130
			140	150
			60B01	

NOTE: PRE STAGE EARTHWORK ADDITIONS/SUBTRACTIONS AND WESTBOUND IL-60 WIDENING EARTHWORK ADDITIONS ARE NOT INCLUDED IN THE EARTHWORK QUANTITIES FOR EACH CROSS SECTION (SEE EARTHWORK SCHEDULES FOR BREAKDOWN OF QUANTITIES BY STAGE AND LOCATION).



DATE	BY
PROFILE NUMBER	DATE
DESIGNED BY	PLOTTED
CHECKED	DATE
NO.	

TYLIN INTERNATIONAL



ILLINOIS RTE. 60 (TOWNLIN RD)
STA. 463+00 TO STA. 463+50

5/17/2007 9:25:32 AM