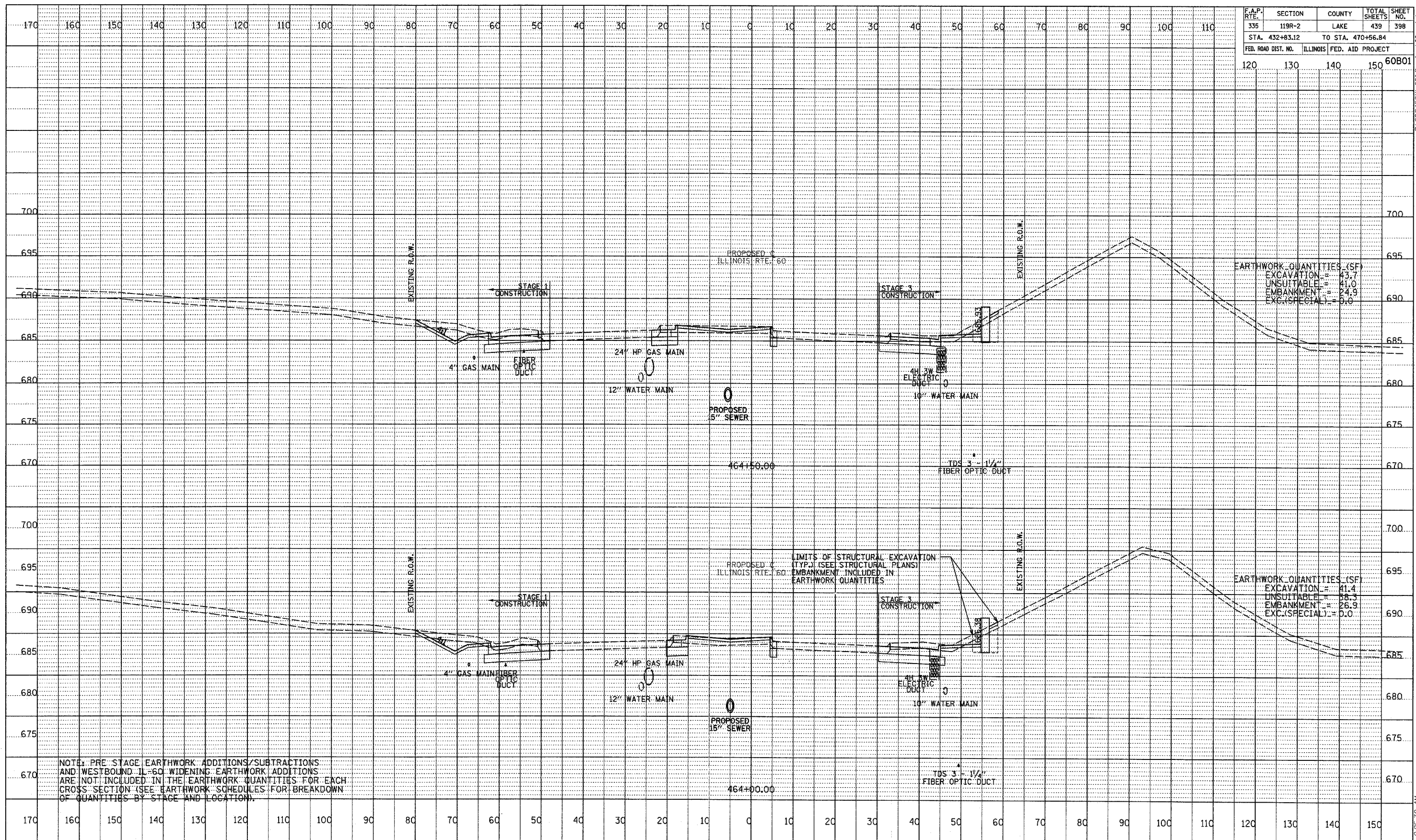


F.A.P. RTE.	SECTION	COUNTY	TOTAL SHEETS	SHEET NO.
335	119R-2	LAKE	439	398
STA. 432+83.12		TO STA. 470+56.84		
FED. ROAD DIST. NO.	ILLINOIS	FED. AID PROJECT		
120	130	140	150	60B01



EARTHWORK QUANTITIES (SF)

EXCAVATION	= 43.7
UNSUITABLE	= 41.0
EMBANKMENT	= 24.9
EXC.(SPECIAL)	= 0.0

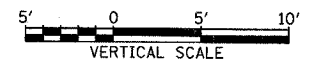
EARTHWORK QUANTITIES (SF)

EXCAVATION	= 41.4
UNSUITABLE	= 38.3
EMBANKMENT	= 26.9
EXC.(SPECIAL)	= 0.0

NOTE: PRE STAGE EARTHWORK ADDITIONS/SUBTRACTIONS AND WESTBOUND IL-60 WIDENING EARTHWORK ADDITIONS ARE NOT INCLUDED IN THE EARTHWORK QUANTITIES FOR EACH CROSS SECTION (SEE EARTHWORK SCHEDULES FOR BREAKDOWN OF QUANTITIES BY STAGE AND LOCATION).

PROFILE	DATE
BY	
NO. _____	
DATE _____	
REVISION _____	
NO. _____	
DATE _____	
REVISION _____	

TYL INTERNATIONAL



ILLINOIS RTE. 60 (TOWNLIN RD)
STA. 464+00 TO STA. 464+50

P:\602458\IL-60\Road\WPK60\60B01.dwg 5/17/2007 9:25:32 AM