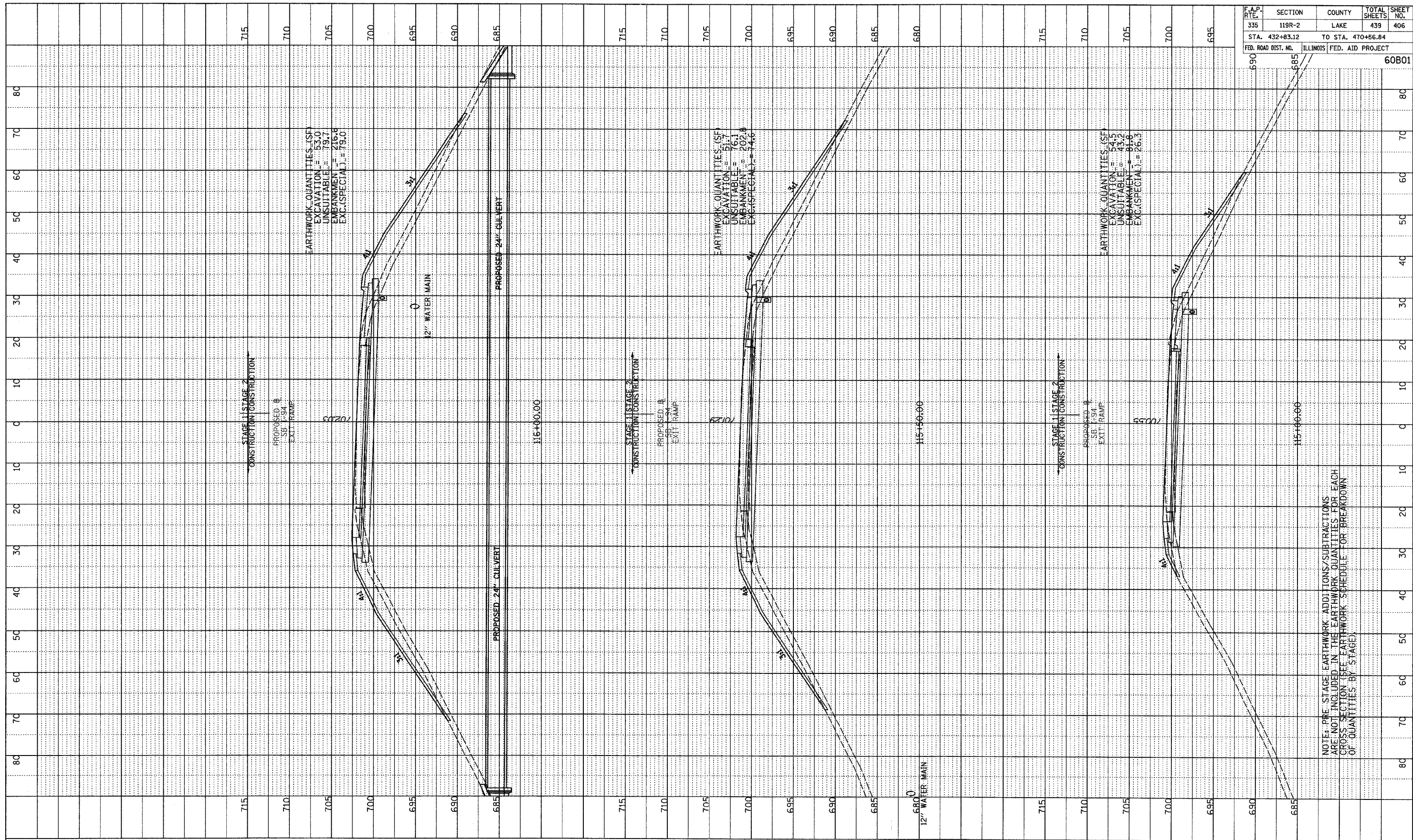
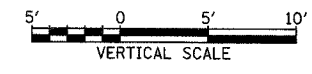
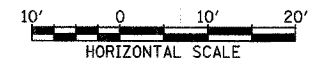


PROFILE SURVEYED BY DATE  
 PLOTTED CHECKED  
 NOTE BOOK DRAWN BY  
 NO. STRUCTURE NOTATION DK/D



F.A.P. RTE.	SECTION	COUNTY	TOTAL SHEETS	SHEET NO.
335	119R-2	LAKE	439	406
STA. 432+83.12		TO STA. 470+56.84		
FED. ROAD DIST. NO.	ILLINOIS	FED. AID PROJECT	60B01	

TYLINT INTERNATIONAL



SB I-94 EXIT RAMP  
 STA. 115+00 TO STA. 116+00

NOTE: PRE-STAGE EARTHWORK ADDITIONS/SUBTRACTIONS ARE NOT INCLUDED IN THE EARTHWORK QUANTITIES FOR EACH CROSS SECTION (SEE EARTHWORK SCHEDULE FOR BREAKDOWN OF QUANTITIES BY STAGE).

10-40623 AM 5/7/2007 P:\50245811\601\road\119R-2\119R-2\_406.dwg