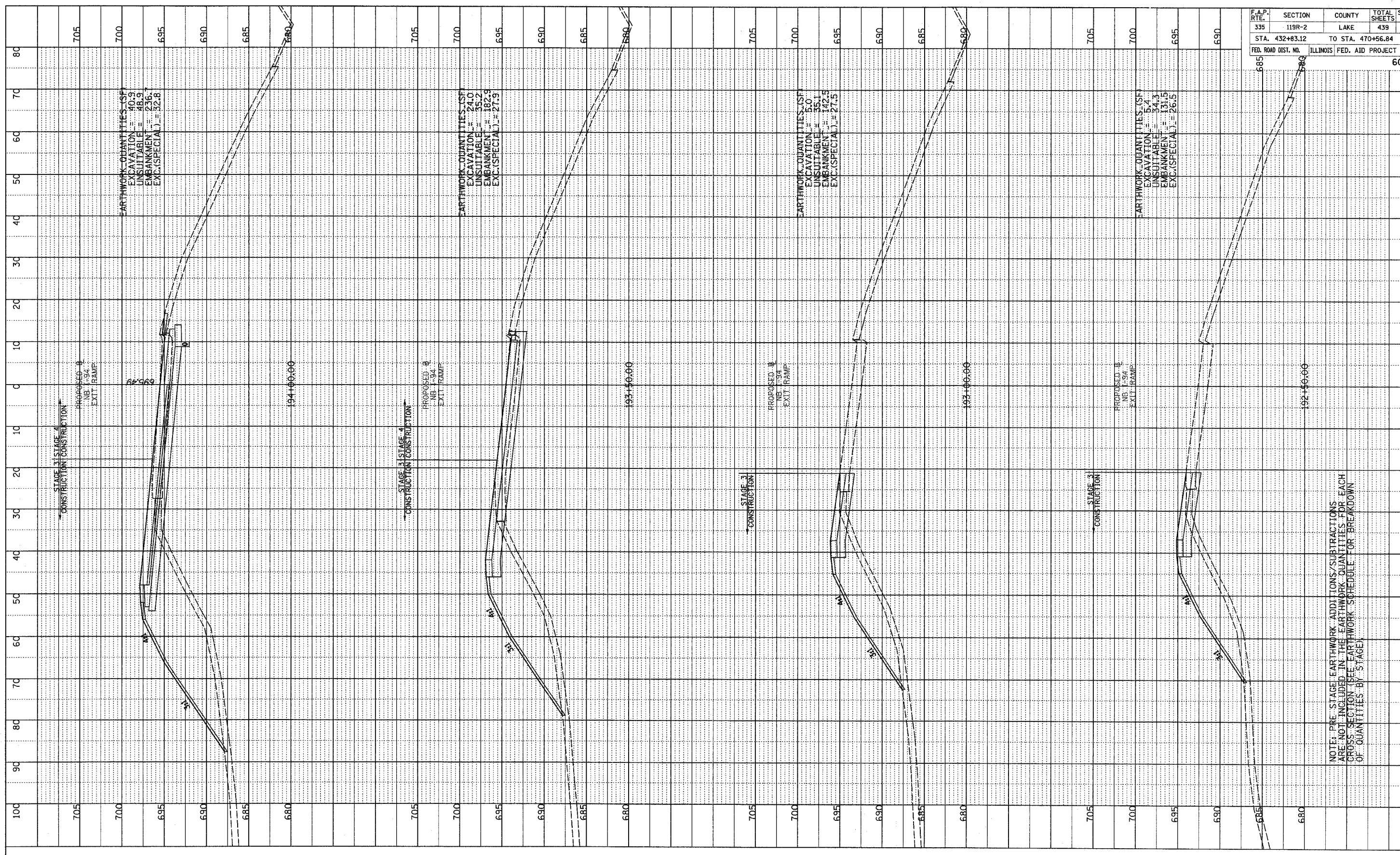
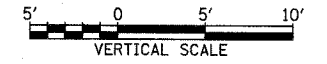
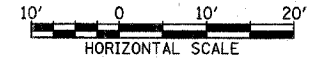


PROFILE	SURVEYED	BY	DATE
NO.	GRADES CHECKED		
	STRUCTURE NOTATION		
	STATUS		



F.A.P. RTE.	SECTION	COUNTY	TOTAL SHEETS	SHEET NO.
335	119R-2	LAKE	439	415
STA. 432+83.12		TO STA. 470+56.84		
FED. ROAD DIST. NO.	ILLINOIS	FED. AID PROJECT	60B01	

TYLIN INTERNATIONAL



NB I-94 EXIT RAMP
STA. 192+50 TO STA. 194+00

NOTE: PRE-STAGE EARTHWORK ADDITIONS/SUBTRACTIONS ARE NOT INCLUDED IN THE EARTHWORK QUANTITIES FOR EACH CROSS SECTION (SEE EARTHWORK SCHEDULE FOR BREAKDOWN OF QUANTITIES BY STAGE)