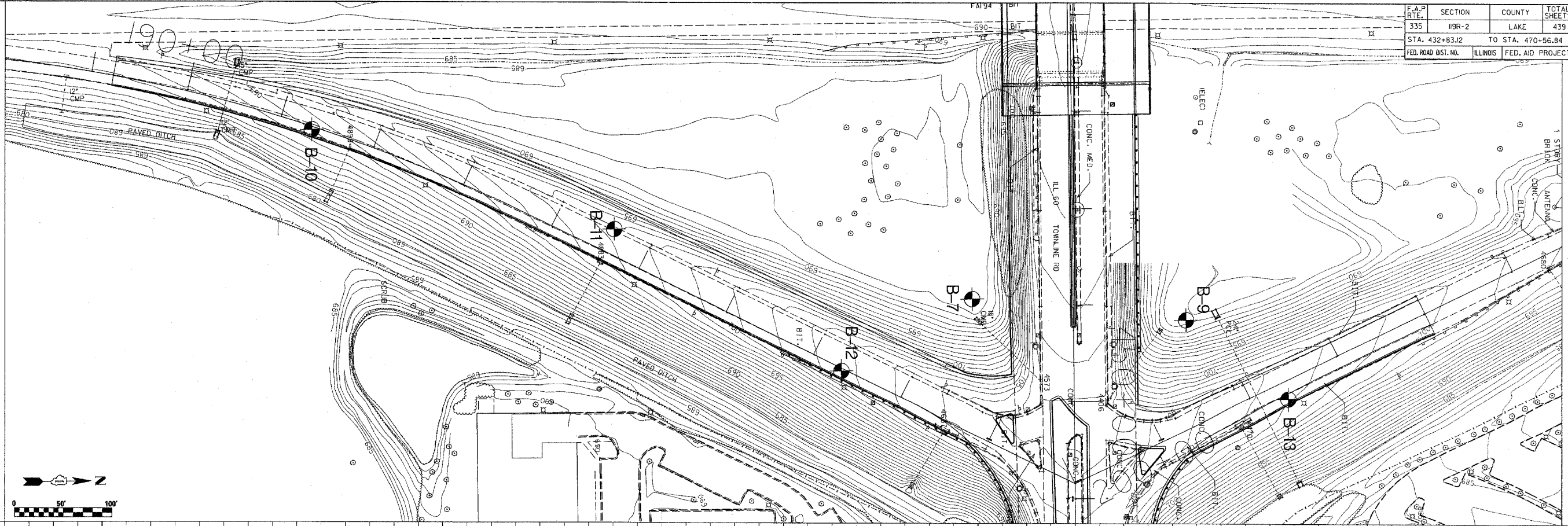
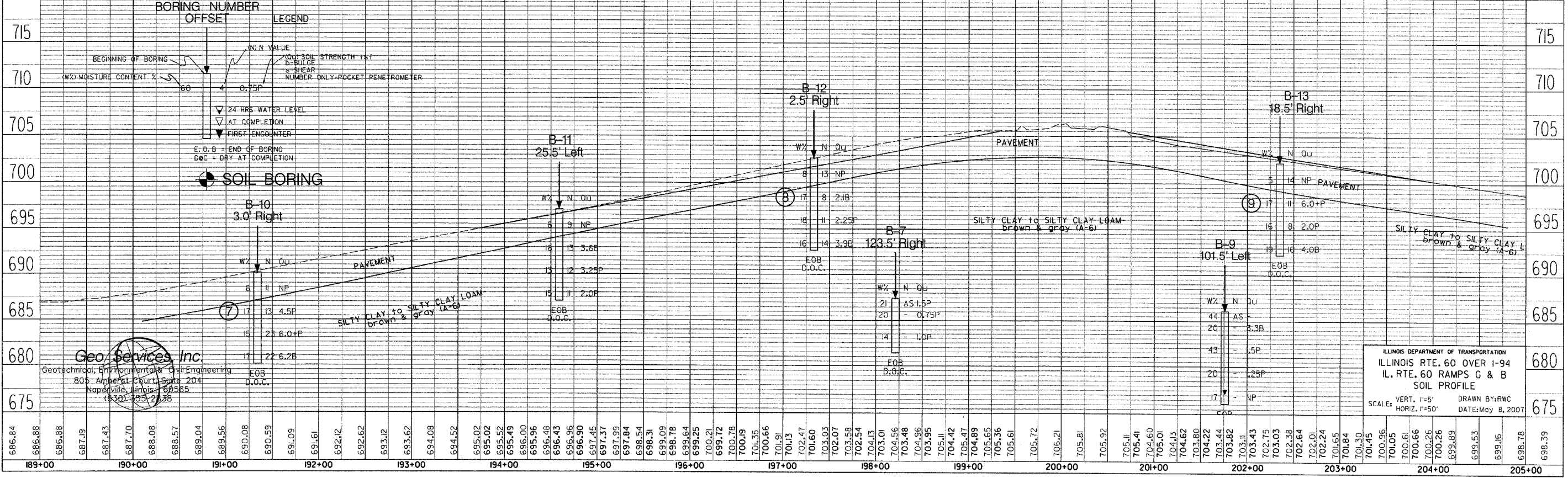


F.A.P. RTE.	SECTION	COUNTY	TOTAL SHEETS	SHEET NO.
335	19R-2	LAKE	439	439H
STA. 432+83.12		TO STA. 470+56.84		
FED. ROAD DIST. NO.	ILLINOIS	FED. AID PROJECT 60BO1		



PLAN	SURVEYED	BY	DATE
NOTE BOOK NO.	ALIGNED		
	CHECKED		
	BY		
	DATE		

PROFILE	SURVEYED	BY	DATE
NOTE BOOK NO.	GRADES CHECKED		
	BY		
	DATE		



**Geo Services Inc.**  
 Geotechnical, Environmental & Civil Engineering  
 805 Amherst Court, Suite 204  
 Naperville, Illinois 60565  
 (630) 353-2838

ILLINOIS DEPARTMENT OF TRANSPORTATION  
 ILLINOIS RTE. 60 OVER I-94  
 IL. RTE. 60 RAMPS G & B  
 SOIL PROFILE  
 SCALE: VERT. 1"=5'  
 HORIZ. 1"=50'  
 DRAWN BY: RWC  
 DATE: May 8, 2007