

F.A.U. RTE.	SECTION	COUNTY	TOTAL SHEETS	SHEET NO.
1374	0406 WRS	COOK	43	1
			<u>43</u>	<u>1</u>
			<u>44</u>	

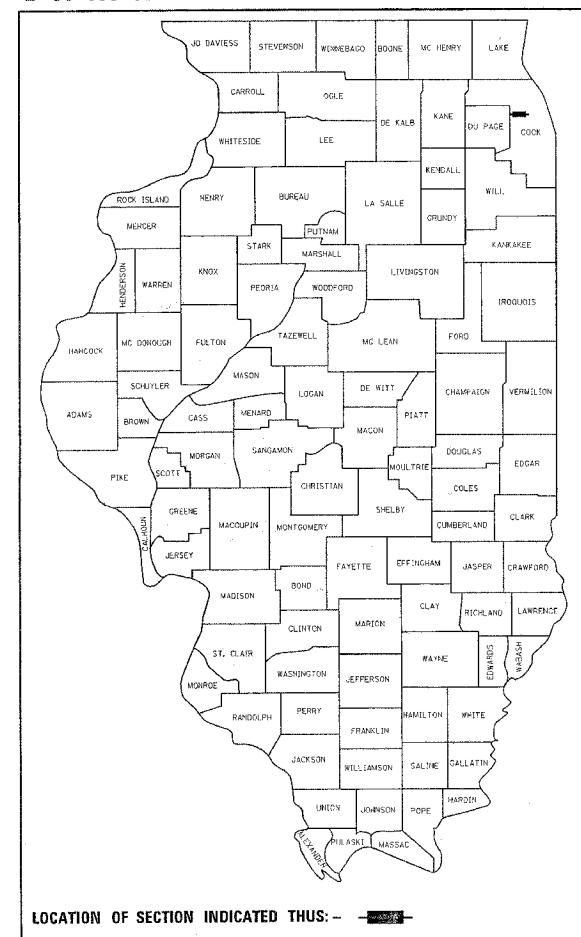
STATE OF ILLINOIS
DEPARTMENT OF TRANSPORTATION
DIVISION OF HIGHWAYS

**PROPOSED
HIGHWAY PLANS**
F.A.U. 1374: BELMONT AVENUE
AT PLAINFIELD AVENUE
SECTION: 0406 WRS
WIDENING, RESURFACING &
TRAFFIC SIGNAL INSTALLATION
COOK COUNTY
C-91-106-07

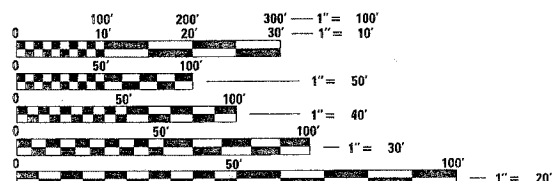
FOR INDEX OF SHEETS, SEE SHEET NO. 2

IMPROVEMENT IS LOCATED IN THE CITY OF CHICAGO AND THE VILLAGE OF RIVER GROVE

D-91-106-07



DISTRICT ONE-PLAN PREPARATION ENGINEER K. ENG / LONG TRAN (847) 705-4240

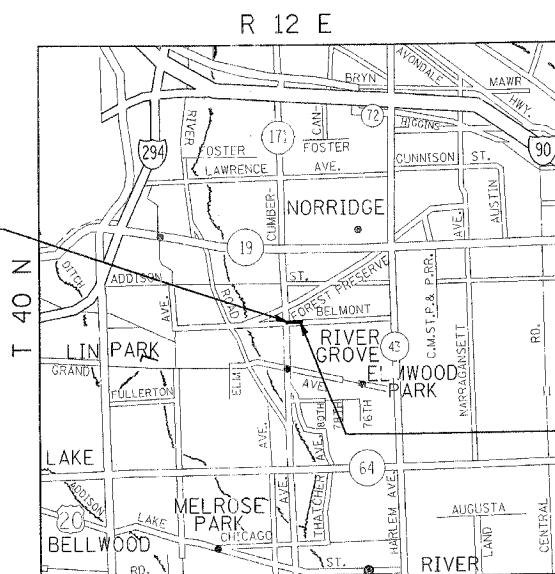


FULL SIZE PLANS HAVE BEEN PREPARED USING STANDARD ENGINEERING SCALES. REDUCED SIZED PLANS WILL NOT CONFORM TO STANDARD SCALES. IN MAKING MEASUREMENTS ON REDUCED PLANS, THE ABOVE SCALES MAY BE USED.

J.U.L.I.E.
JOINT UTILITY LOCATION INFORMATION FOR EXCAVATION
1-800-892-0123

CONTRACT NO. 60C03

IMPROVEMENT BEGINS
STA. 94+70



LEYDEN TOWNSHIP

TRAFFIC DATA
SPEED LIMIT: 35 MPH
2002 ADT: 21,100

IMPROVEMENT ENDS
STA. 104+75

GROSS & NET LENGTH OF IMPROVEMENT = 1,005 FEET (0.2 MILE)

STATE OF ILLINOIS
DEPARTMENT OF TRANSPORTATION
DIVISION OF HIGHWAYS

SUBMITTED April 10 2007
Diane O'Keefe
DEPUTY DIRECTOR OF HIGHWAYS, REGION ENGINEER

May 11, 2007
Eric S. Hancock
INTERIM ENGINEER OF DESIGN AND ENVIRONMENT

May 11, 2007
Milton R. Sauer, P.E.
DIRECTOR OF HIGHWAY, CHIEF ENGINEER

PRINTED BY THE AUTHORITY
OF THE STATE OF ILLINOIS