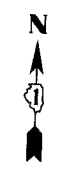
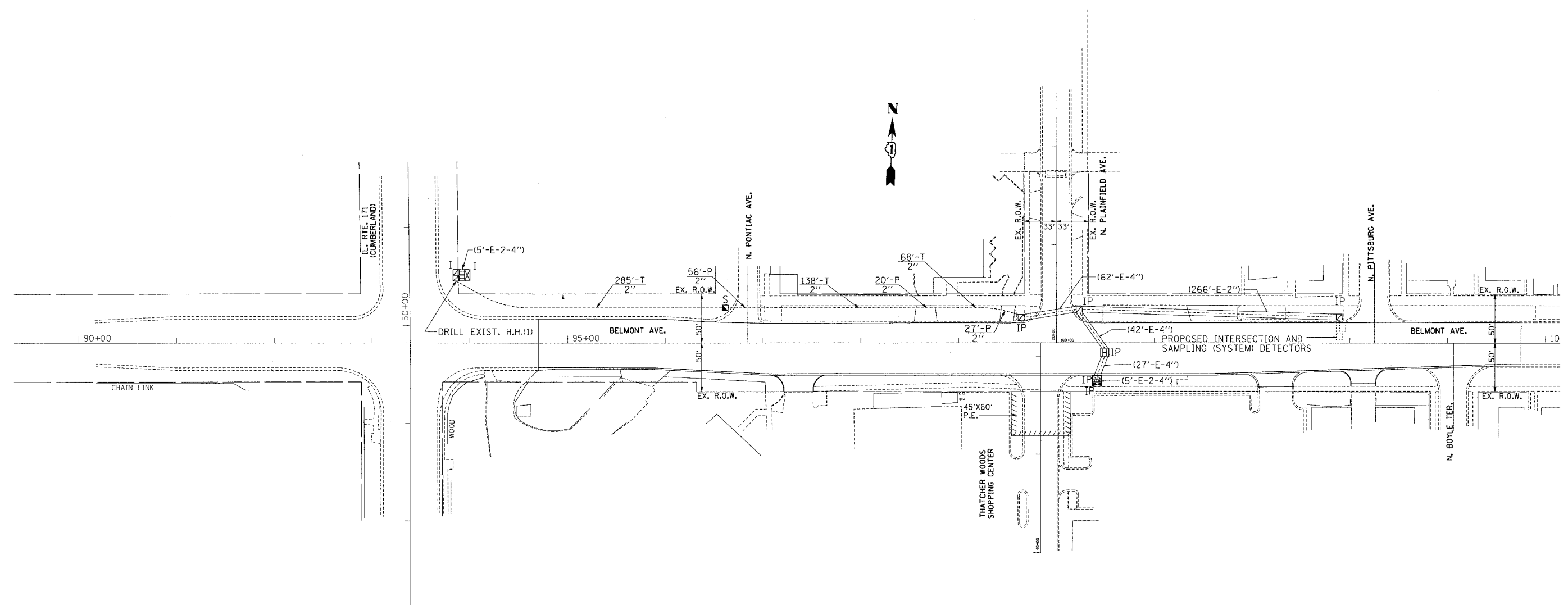


| | | | | |
|---------------------|----------|---------------------------|--------------|-----------|
| F.A.U. RTE. | SECTION | COUNTY | TOTAL SHEETS | SHEET NO. |
| 1374 | 0406 WBS | COOK | 43 | 17 |
| STA. | | TO STA. | | |
| FED. ROAD DIST. NO. | | ILLINOIS FED. AID PROJECT | | |
| D-91-106-07 | | | | |



INTERCONNECT PLAN LEGEND

| | PROPOSED | EXISTING |
|--|----------|----------|
| CONTROLLER | | |
| HANDHOLE | | |
| DOUBLE HANDHOLE | | |
| HEAVY DUTY HANDHOLE | | |
| G.S. CONDUIT IN TRENCH (T) OR PUSHED (P) | | |
| DETECTOR LOOP | | |
| UNIT DUCT | UD | |
| SYSTEM | S | |
| INTERSECTION | IP | I |

THE BRAND OF CONTROLLER SHALL BE "EAGLE" TO MATCH THE EXISTING ADJACENT SYSTEM INSTALLATION.

PLOT DATE = #DATE#
 FILE NAME = #FILE#
 PLOT SCALE = #SCALE#
 USER NAME = #USER#

INFRASTRUCTURE ENGINEERING, INC.
 33 W. MONROE ST., SUITE 1540
 CHICAGO, IL. 60603-5322
 PHONE 312.425.9560
 FAX 312.425.9564

| REVISIONS | |
|---------------------------|----------|
| NAME | DATE |
| 60% PRELIMINARY SUBMITTAL | 01-22-07 |
| 90% PRE-FINAL SUBMITTAL | 02-27-07 |
| 100% FINAL SUBMITTAL | 03-12-07 |
| REVISION 1 | 04-16-07 |

ILLINOIS DEPARTMENT OF TRANSPORTATION
INTERCONNECT PLAN
BELMONT AVENUE
 FROM IL. RTE. 171 (Cumberland)
 TO PLAINFIELD AVE.
 SCALE: VERT. 1"=50'
 HORIZ. 1"=50'
 DATE 04-16-07
 DRAWN BY TPC
 DESIGNED BY TPC
 CHECKED BY ER