

F.A.I. RTE.	SECTION	COUNTY	TOTAL SHEETS	SHEET NO.
94	2003-071 RS	COOK	91	4

STA. _____ TO STA. _____

FED. ROAD DIST. NO. 1 ILLINOIS FED. AID PROJECT

SUMMARY OF QUANTITIES

URBAN
90/FED./10/STATE

CODE NO	ITEM	UNIT	TOTAL QUANTITIES	NB ROADWAY 1000	SB ROADWAY 1000	DRAINAGE 1000	BRIDGES X031-2A
20800150	TRENCH BACKFILL	CU YD	134			134	
21400100	GRADING AND SHAPING DITCHES	FOOT	150	150			
35102400	AGGREGATE BASE COURSE, TYPE B, 12"	SO YD	134			134	
40600200	BITUMINOUS MATERIALS (PRIME COAT)	TON	420	207	213		
40600400	MIXTURE FOR CRACKS, JOINTS, AND FLANGE WAYS	TON	98	49	49		
40600895	CONSTRUCTING TEST STRIP	EACH	4	2	2		
40600982	HOT-MIX SURFACE REMOVAL - BUTT JOINT	SO YD	2340	1170	1170		
40600985	PORTLAND CEMENT CONCRETE SURFACE REMOVAL - BUTT JOINT	SO YD	1600	834	834		
40603085	HOT-MIX ASPHALT BINDER COURSE, IL-19.0, N70	TON	24,999	12151	12848		
40603340	HOT-MIX ASPHALT SURFACE COURSE, MIX "D", N70	TON	19,276	8877	9399		
44000100	PAVEMENT REMOVAL	SO YD	134			134	
44200553	CLASS A PATCHES, TYPE II, 10 INCH	SO YD	349	104	245		
44200557	CLASS A PATCHES, TYPE III, 10 INCH	SO YD	68		68		
44200559	CLASS A PATCHES, TYPE IV, 10 INCH	SO YD	1234	907	327		
44201765	CLASS D PATCHES, TYPE II, 10 INCH	SO YD	730	392	338		
44201769	CLASS D PATCHES, TYPE III, 10 INCH	SO YD	380	254	126		
44201771	CLASS D PATCHES, TYPE IV, 10 INCH	SO YD	2169	1844	325		
44201296	DEFORMED BARS - EXPANSION JOINT	EACH	236	236			
44213000	PATCHING REINFORCEMENT	SO YD	3656	2660	996		
44213200	SAW CUTS	FOOT	11076	6726	3990	360	
48101200	AGGREGATE SHOULDERS, TYPE B	TON	1,705	851	854		
48203037	HOT-MIX ASPHALT SHOULDERS, 10"	SO YD	134			134	
50102400	CONCRETE REMOVAL	CU YD	25.7				25.7
50157300	PROTECTIVE SHIELD	SO YD	873				873
50300255	CONCRETE SUPERSTRUCTURE	CU YD	29.8				29.8
50300260	BRIDGE DECK GROOVING	SO YD	791				791
50300300	PROTECTIVE COAT	SO YD	83				83
50800205	REINFORCEMENT BARS, EPOXY COATED	POUND	4,330				4,330
50800515	BAR SPLICERS	EACH	52				52
52000110	PREFORMED JOINT STRIP SEAL	FOOT	240				240
55021600	RCCP CL III, TYP 2, REIN. CONC. CULVERT, ST. DRAIN, AND SEWER PIPE, CLASS III 12"	FOOT	130			130	
59000200	EPOXY CRACK INJECTION	FOOT	200				200

PLOT DATE = 5/23/2007
FILE NAME = 011111
USER NAME = 001001

REVISIONS	
NAME	DATE

ILLINOIS DEPARTMENT OF TRANSPORTATION
SUMMARY OF QUANTITIES
F.A.I. 94 (I-94)

SCALE: _____ DATE MAY 2007 DRAWN BY DCS CHECKED BY _____

Rev. 7-20-07

SUMMARY OF QUANTITIES

*URBAN
90% FED. / 10% STATE*

CODE NO	ITEM	UNIT	TOTAL QUANTITIES	NB ROADWAY 1000	SB ROADWAY 1000	DRAINAGE 1000	BRIDGES X031-2A
60202215	CATCH BASINS, TYPE A, 4'-DIAMETER, WITH MEDIAN INLET (604101)	EACH	1	1			
60208240	CATCH BASINS, TYPE C, TYPE 24 FRAME AND GRATE	EACH	12			12	
60300105	FRAMES AND GRATES TO BE ADJUSTED	EACH	560			560	
63500105	DELINEATORS	EACH	1498	693	805		
64200105	SHOULDER RUMBLE STRIP	FOOT	124,562	62239	62323		
67000400	ENGINEER'S FIELD OFFICE, TYPE A	CAL MO	20	10	10		
67100100	MOBILIZATION	L SUM	1	0.4	0.4		0.2
70300240	TEMPORARY PAVEMENT MARKING - LINE 6"	FOOT	3200	1600	1600		
70400100	TEMPORARY CONCRETE BARRIER	FOOT	450	225	225		
70400200	RELOCATE TEMPORARY CONCRETE BARRIER	FOOT	450	225	225		
* 78000200	THERMOPLASTIC PAVEMENT MARKING - LINE 4"	FOOT	139,745	68540	71205		
* 78000500	THERMOPLASTIC PAVEMENT MARKING - LINE 8"	FOOT	25,536	11193	14343		
* 78000600	THERMOPLASTIC PAVEMENT MARKING - LINE 12"	FOOT	6,619	3108	3511		
78003120	PREFORMED PLASTIC PAVEMENT MARKING, TYPE B - LINE 5"	FOOT	<i>35,352</i>	<i>17,796</i>	17556		
* 78008210	POLYUREA PAVEMENT MARKING, TYPE 1, 4"	FOOT	<i>70,129</i>	<i>35,065</i>	<i>35,064</i>		
* 78008220	POLYUREA PAVEMENT MARKING, TYPE 1, 5"	FOOT	<i>17,658</i>	<i>8829</i>	<i>8829</i>		
* 78100100	RAISED REFLECTIVE PAVEMENT MARKER	EACH	<i>5210</i>	<i>2614</i>	<i>2596</i>		
* 78200510	BARRIER WALL MARKERS, TYPE A	EACH	627	<i>314</i>	<i>313</i>		
78300100	PAVEMENT MARKING REMOVAL	SQ FT	<i>61,908</i>	<i>30,954</i>	<i>30,954</i>		
78300200	RAISED REFLECTIVE PAVEMENT MARKER REMOVAL	EACH	<i>5193</i>	<i>2597</i>	<i>2596</i>		
* 81900200	TRENCH AND BACKFILL FOR ELECTRICAL WORK	FOOT	1,000	<i>1,000</i>			
X0321744	SILICONE BRIDGE JOINT SEALER, 2"	FOOT	66				66
X0322247	MAINTENANCE OF EXISTING TRAFFIC SURVEILLANCE	L SUM	1	0.5	.5		
* X0322300	ELECTRIC CABLE IN CONDUIT NO.18 4/C, TWISTED, SHIELDED	FOOT	10,133	<i>10,133</i>			
X0322729	MATERIAL TRANSFER DEVICE	TON	35986	18014	17972		
X0323830	DRAINAGE SCUPPERS, DS-11	EACH	2				2
X0325303	STRUCTURAL REPAIR OF CONCRETE (DEPTH GREATER THAN 5 INCHES)	SQ FT	3,292	876	2416		
X0325305	STRUCTURAL REPAIR OF CONCRETE (DEPTH EQUAL TO OR LESS THAN 5 INCHES)	SQ FT	<i>50</i>				50
X0325428	CLASS A PATCHES, TYPE II, 10 INCH (SPECIAL)	SQ YD	336	179	157		
X0325429	CLASS A PATCHES, TYPE III, 10 INCH (SPECIAL)	SQ YD	156	84	72		
X0325430	CLASS A PATCHES, TYPE IV, 10 INCH (SPECIAL)	SQ YD	1,514	1387	127		
X0325815	REMOVE EXISTING CABLE	FOOT	15,167	<i>15,167</i>			

* SPECIALTY ITEMS

PLOT DATE = 5/23/2007
 FILE NAME = 010115
 USER NAME = 040101

△ Rev. 7-20-07

Rev.

REVISIONS		ILLINOIS DEPARTMENT OF TRANSPORTATION SUMMARY OF QUANTITIES F.A.I. 94 (I-94) SCALE: DATE MAY 2007 DRAWN BY DCS CHECKED BY
NAME	DATE	

Edens I 94 Resurfacing Project

F.A.I. RTE.	SECTION	COUNTY	TOTAL SHEETS	SHEET NO.
94	2003-071 RS	COOK	91	6A
STA.		TO STA.		
FED. ROAD DIST. NO. 1		ILLINOIS	FED. AID PROJECT	

SUMMARY OF QUANTITIES

URBAN
90% FED. / 10% STATE

CODE NO	ITEM	UNIT	TOTAL QUANTITIES	NB ROADWAY 1000	SB ROADWAY 1000	DRAINAGE 1000	BRIDGES X031-2A
X0325821	CONCRETE BARRIER WALL REMOVAL AND REPLACEMENT (FULL DEPTH REPAIR)	FEET	535	280	255		
X0325822	CONCRETE BARRIER WALL REMOVAL AND REPLACEMENT (PARTIAL DEPTH REPAIR)	FEET	1422	221	1201		
44000155	HOT MIX ASPHALT SURFACE REMOVAL, 1-1/2"	SQ YD	1503	1044	459		
44000165	HOT MIX ASPHALT SURFACE REMOVAL, 4"	SQ YD	2936	1267	1669		
55019500	STORM SEWERS, TYPE I, RCCP CL IV, 12"	FT	130			130	
70102630	TRAFFIC CONTROL AND PROTECTION, STANDARD 701601	L SUM	1	.5	.5		
70102620	TRAFFIC CONTROL AND PROTECTION, STANDARD 701501	L SUM	1	.5	.5		
70102625	TRAFFIC CONTROL AND PROTECTION, STANDARD 701605	L SUM	1	.5	.5		
70300220	TEMPORARY PAVEMENT MARKING, 4"	FEET	634628	634628			
70300230	TEMPORARY PAVEMENT MARKING, 5"	FEET	70749	70749			
70301000	WORK ZONE PAVEMENT MARKING REMOVAL	SQ FT	241021	241021			
*78008240	POLYUREA PAVEMENT MARKING, TYPE I, 8" LINE	FEET	6384	6384			
*78008250	POLYUREA PAVEMENT MARKING, TYPE I, 12" LINE	FEET	1654	1654			
X0322256	TEMPORARY INFORMATION SIGNING	SQ FT	917	917			
⊙E0076600	TRAINEES	HOUR	4,000	4,000			

⊙ Y080

* SPECIALTY ITEMS

05/16/2007
D:\FILES\BSCALEP
D:\FILES\BSCALEP
D:\FILES\BSCALEP

REVISIONS	
NAME	DATE

ILLINOIS DEPARTMENT OF TRANSPORTATION
SUMMARY OF QUANTITIES
F.A.I. 94 (I-94)

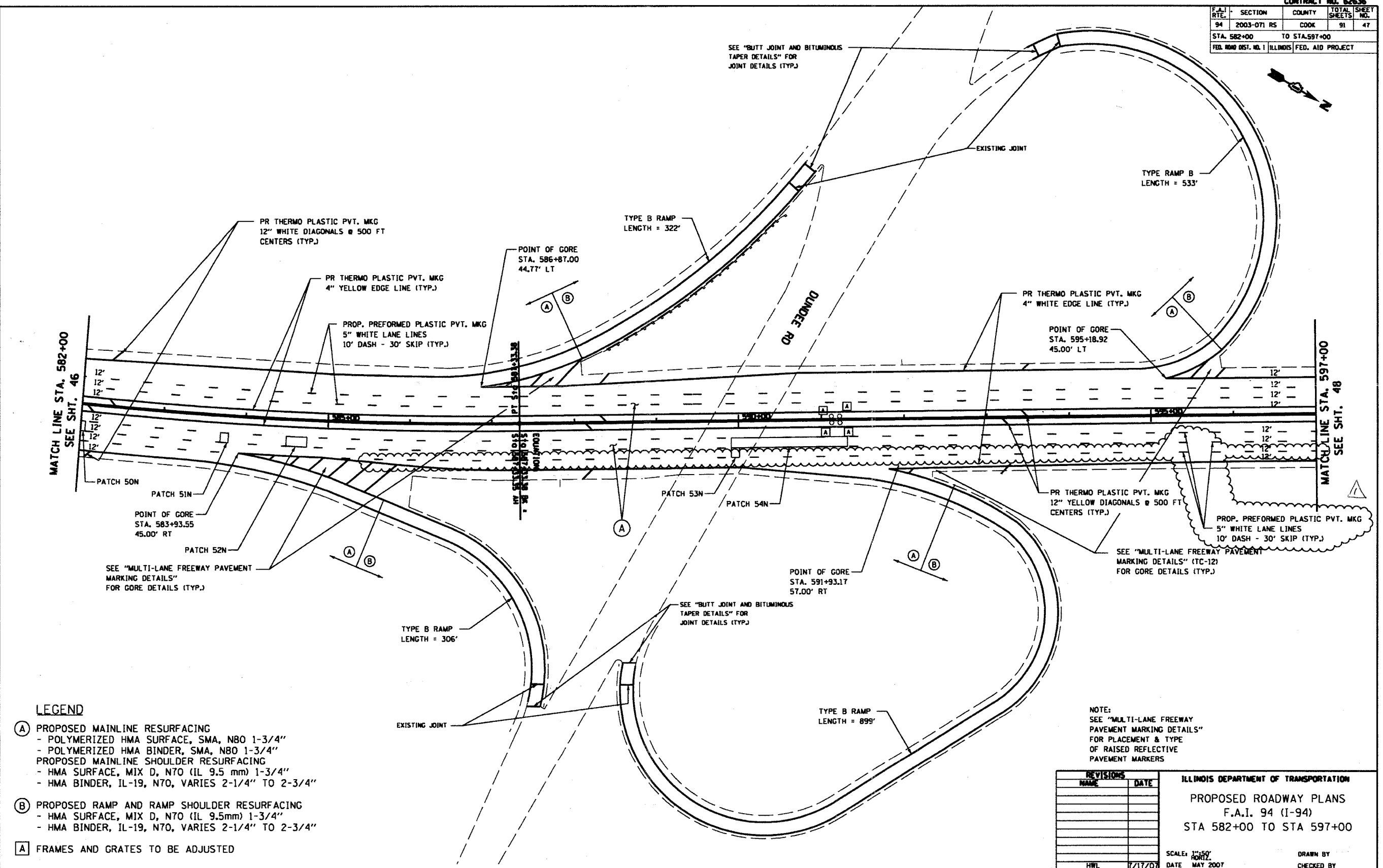
SCALE:
DATE JUNE 2007

DRAWN BY
CHECKED BY

⚠ Rev. 7-20-07

Edens I 94 Resurfacing Project

CONTRACT NO. 62636			
F.A.I. SECTION	COUNTY	TOTAL SHEETS	NO.
94 2003-OT1 RS	COOK	91	47
STA. 582+00 TO STA. 597+00			
FED. ROAD DIST. NO. 1 ILLINOIS FED. AID PROJECT			



MATCH LINE STA. 582+00
SEE SHT. 46

MATCH LINE STA. 597+00
SEE SHT. 48

- LEGEND**
- (A) PROPOSED MAINLINE RESURFACING
 - POLYMERIZED HMA SURFACE, SMA, N80 1-3/4"
 - POLYMERIZED HMA BINDER, SMA, N80 1-3/4"
 - PROPOSED MAINLINE SHOULDER RESURFACING
 - HMA SURFACE, MIX D, N70 (IL 9.5 mm) 1-3/4"
 - HMA BINDER, IL-19, N70, VARIES 2-1/4" TO 2-3/4"
 - (B) PROPOSED RAMP AND RAMP SHOULDER RESURFACING
 - HMA SURFACE, MIX D, N70 (IL 9.5mm) 1-3/4"
 - HMA BINDER, IL-19, N70, VARIES 2-1/4" TO 2-3/4"
 - (A) FRAMES AND GRATES TO BE ADJUSTED

NOTE:
SEE "MULTI-LANE FREEWAY
PAVEMENT MARKING DETAILS"
FOR PLACEMENT & TYPE
OF RAISED REFLECTIVE
PAVEMENT MARKERS

REVISIONS	
NAME	DATE
HWL	7/17/07

ILLINOIS DEPARTMENT OF TRANSPORTATION
PROPOSED ROADWAY PLANS
F.A.I. 94 (I-94)
STA 582+00 TO STA 597+00

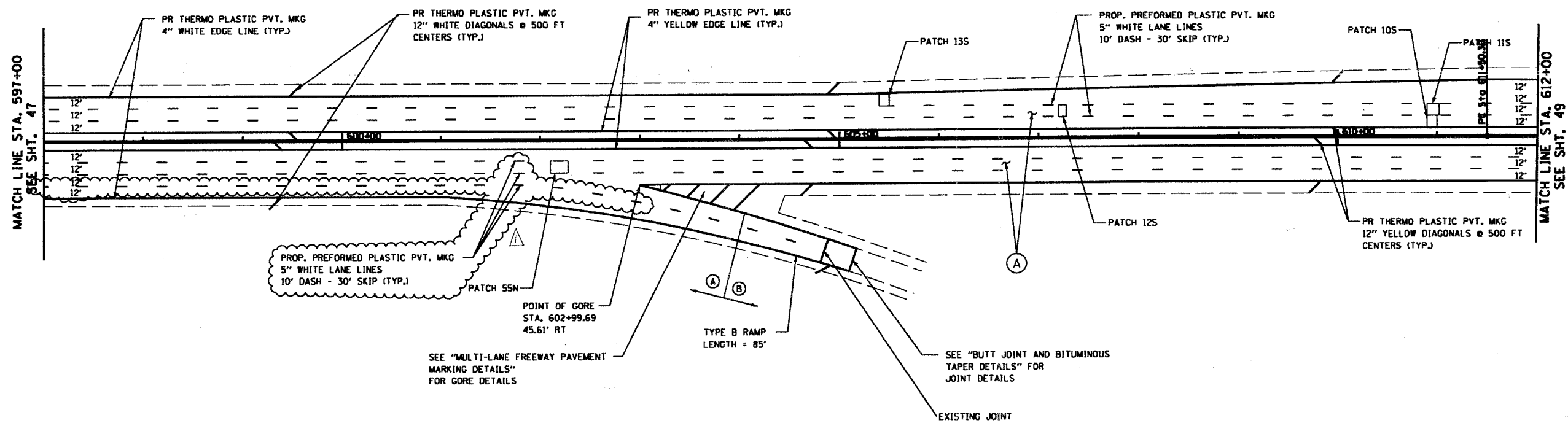
SCALE: 1"=50'
DATE: MAY 2007
DRAWN BY:
CHECKED BY:

Edens I 94 Resurfacing Project

Rev. 7-20-07

PLOT DATE: 7/17/07
 FILE NAME: I-94
 PLOT SCALE: 1"=50'
 USER NAME: J. WILSON

CONTRACT NO. 62636				
F.A.I. RTE.	SECTION	COUNTY	TOTAL SHEETS	NO.
94	2003-071 RS	COOK	91	48
STA. 597+00		TO STA. 612+00		
FED. ROAD DIST. NO. 1 ILLINOIS FED. AID PROJECT				



LEGEND

- (A) PROPOSED MAINLINE RESURFACING
 - POLYMERIZED HMA SURFACE, SMA, N80 1-3/4"
 - POLYMERIZED HMA BINDER, SMA, N80 1-3/4"
- PROPOSED MAINLINE SHOULDER RESURFACING
 - HMA SURFACE, MIX D, N70 (IL 9.5 mm) 1-3/4"
 - HMA BINDER, IL-19, N70, VARIES 2-1/4" TO 2-3/4"
- (B) PROPOSED RAMP AND RAMP SHOULDER RESURFACING
 - HMA SURFACE, MIX D, N70 (IL 9.5mm) 1-3/4"
 - HMA BINDER, IL-19, N70, VARIES 2-1/4" TO 2-3/4"
- (A) FRAMES AND GRATES TO BE ADJUSTED

NOTE:
SEE "MULTI-LANE FREEWAY PAVEMENT MARKING DETAILS" FOR PLACEMENT & TYPE OF RAISED REFLECTIVE PAVEMENT MARKERS

REVISIONS	
NAME	DATE
HWL	7/17/07

ILLINOIS DEPARTMENT OF TRANSPORTATION
PROPOSED ROADWAY PLANS
F.A.I. 94 (I-94)
STA 597+00 TO STA 612+00

SCALE: 1"=50'
DATE MAY 2007

DRAWN BY
CHECKED BY

Edens I 94 Resurfacing Project

△ Rev. 7-20-07

PLOT DATE: 7/19/07
 FILE NAME: I94_071.RS
 PLOT SCALE: 1/4"=1'-0"
 USER NAME: HWT

STATE OF ILLINOIS
DEPARTMENT OF TRANSPORTATION

ROUTE NO.	SECTION	COUNTY	SHEET NO.	TOTAL SHEETS
F.A.I.-94/	2003-071	COOK	91	79
F.A.P. 346	RS			

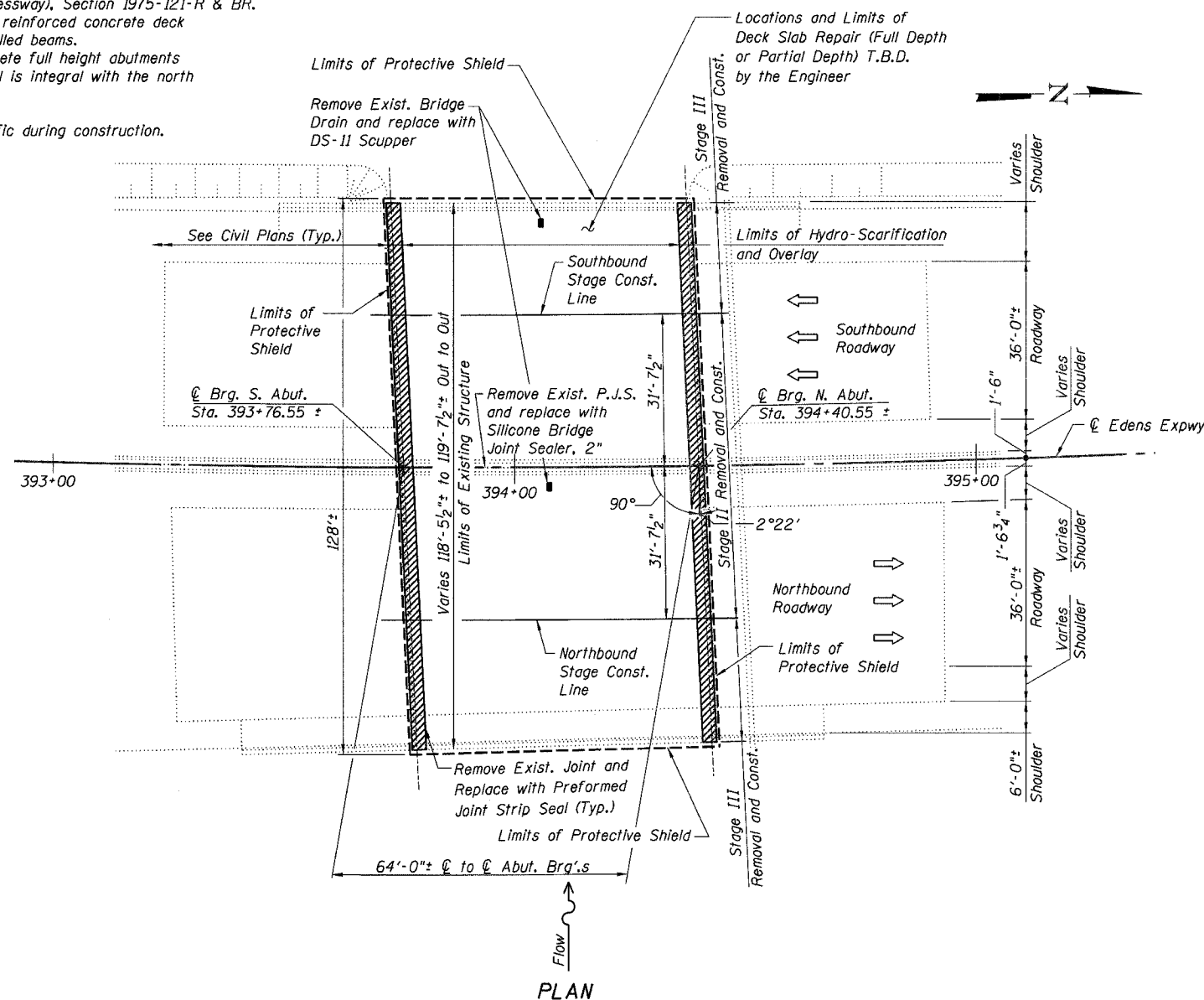
Contract # 62636

B.M. - Engineer to set temporary benchmark in field as necessary.

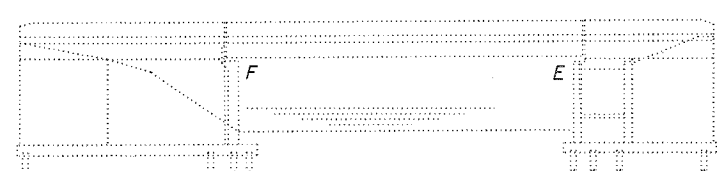
Existing Structure - Structure No. 016-0102, built as S.A. Route 263, Section 263-0909.2-15D at Station 394+08.30 in 1949, rehabilitated and widened in 1979 as FAI Route 94 (Edens Expressway), Section 1975-121-R & BR. The existing structure consists of a non-composite reinforced concrete deck supported by simple span steel plate girders and rolled beams. The substructure consists of steel reinforced concrete full height abutments supported on pile foundations. An underpass tunnel is integral with the north abutment below the north approach.

Stage construction shall be utilized to maintain traffic during construction.

No Salvage



PLAN



ELEVATION
(Looking West)

SCOPE OF WORK

1. Provide Protective Shield with limits as indicated.
2. [Symbol]
3. Close Stage II construction areas to traffic.
4. Hydro-Scarify the deck slab.
5. Remove and replace expansion joints and surrounding concrete (including parapets).
6. Perform deck slab repair.
7. Remove existing floor drains and install new scuppers at existing locations.
8. Place Overlay.
9. Overlay bridge approaches (See Civil Plans).
10. Open Stage II construction area to staged traffic.
11. Close Stage III Removal areas to traffic.
12. Repeat steps 4-9 but for Stage III construction.
13. Open bridge to traffic.

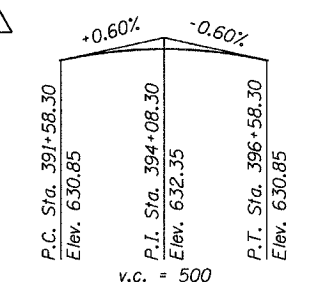
DESIGN SPECIFICATIONS
2002 AASHTO

DESIGN STRESSES

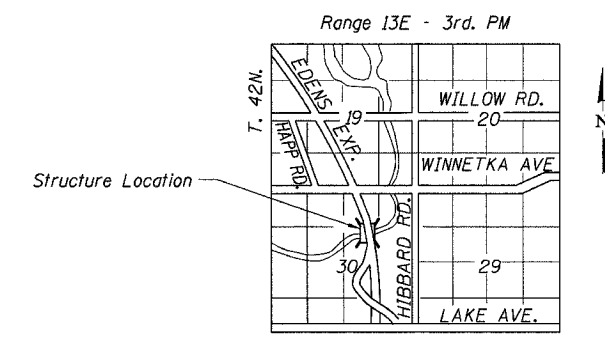
FIELD UNITS
 $f'_c = 3,500$ psi
 $f_y = 60,000$ psi (reinforcement)

EXISTING CURVE DATA

$\Delta = 26^\circ 24'$ $E = 97.19'$
 $D = 1^\circ 36'$ $R = 3581.10'$
 $T = 839.95$ $S = 0.038'/ft.$
 $L = 1650.00$ $P.I. = Sta. 387+50.54N$



EXISTING PROFILE GRADE
EDENS EXPRESSWAY



LOCATION SKETCH

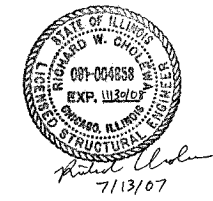
NOTES

1. For joint removal and replacement plans and details, see Sheet No. 83 thru 86.
2. See Structural Notes on Sheet No. 80.
3. See Civil Plans for Maintenance of Traffic Plans & Details.

GENERAL PLAN AND ELEVATION
F.A.I. 94/ (EDENS EXPRESSWAY)
OVER SKOKIE RIVER
COOK COUNTY
STATION 394+08.55
STRUCTURE NO. 016-0102

LEGEND

- - - Limits of Protective Shield
- [Hatched Box] Concrete Removal / Joint Reconstruction



DESIGNED -	DWH
CHECKED -	JSD
DRAWN -	EF
CHECKED -	JSD

LOCHNER
H.W. LOCHNER, INC., CHICAGO, ILLINOIS

Revised 07/13/2007

T:\2298\struct\dgn\01020PE00.dgn

STATE OF ILLINOIS
DEPARTMENT OF TRANSPORTATION

ROUTE NO.	SECTION	COUNTY	TOTAL SHEETS	SHEET NO.
F.A.I. 94/ F.A.P. 346	2003-071 RS	COOK	91	80
FED. ROAD DIST. NO. 7		ILLINOIS	FED. AID PROJECT-	

Contract # 62636

STRUCTURAL NOTES

- Expansion joint plates and attached bars shall be shop painted with the inorganic zinc rich primer.
- Reinforcement bars shall conform to the requirements of ASTM A706 Grade 60 (IL Modified). See Special Provisions.
- Reinforcement bars designated (E) shall be epoxy coated.
- Existing reinforcement bars extending into the removal area shall be cleaned, straightened and incorporated into the new construction. Any reinforcement bars that are damaged during concrete removal shall be replaced with an approved bar splicer or anchorage system. Cost included with "Concrete Removal."
- Plan dimensions and details relative to existing plans are subject to routine variations. The Contractor shall field verify existing dimensions and details affecting new construction and make necessary approved adjustments prior to construction or ordering of materials. Such variations shall not be cause for additional compensation for a change in scope of the work, however, the Contractor will be paid for the quantity actually furnished based upon the unit price bid for the work.
- Stage construction shall be utilized to maintain traffic during construction.
- The Contractor shall exercise care during removal of existing joints to ensure that the slab, beams and diaphragms' integrity will not be detrimentally impacted. The Contractor shall repair any damage(s) to the slab, beams and diaphragms caused by his operation as directed by the Engineer at no additional cost to the Department.
- The Contractor shall provide a Protective Shield under the deck for Full Deck Slab repairs as per direction of the Engineer and as shown on the plans.
- The Contractor may have to remove the Name Plate(s) that interfere with the parapet removal for joint reconstruction. The Contractor shall reinstall the Name Plate(s) as directed by the Engineer. The cost of removal and installation of Name Plate(s) shall be included in the cost for "Concrete Removal" and "Concrete Superstructure."
- Protective coat shall be applied only to the new concrete provided for the reconstruction of the joints (top of deck slab, top and traffic face of parapet).
- The Engineer shall determine extent, location and type of substructure and deck slab repairs in the field.
- Prior to pouring the new concrete deck, all heavy or loose rust, loose mill scale, and other loose potentially detrimental foreign material shall be removed from the surfaces in contact with concrete. Tightly adhered paint may remain unless otherwise noted. Removal shall be accomplished by methods that will not damage the steel and cost will be included in the pay item covering removal of the existing concrete.

As directed by the Engineer, existing construction accessories welded to the top flange of beams and girders shall be removed. The weld areas shall be ground flush and inspected for cracks using magnetic particle testing (MT) or dye penetrant testing (PT) by an individual acceptable to the Engineer. Any cracks that can not be removed by grinding 1/4 inch deep shall be identified and reported to the Bureau of Bridges and Structures for further disposition. The cost of removing welded accessories, grinding and inspecting weld areas and grinding cracks will be paid for according to Article 109.04 of the Standard Specifications.

DESIGNED -	JSD
CHECKED -	DWH
DRAWN -	EF
CHECKED -	DWH

LOCHNER
H.W. LOCHNER, INC., CHICAGO, ILLINOIS

TOTAL BILL OF MATERIAL

Item	Unit	Super	Sub.	Total
Concrete Removal	Cu. Yd.	25.7		25.7
Protective Shield	Sq. Yd.	873		873
Concrete Superstructure	Cu. Yd.	29.8		29.8
Bridge Deck Grooving	Sq. Yd.	791		791
Protective Coat	Sq. Yd.	83		83
Reinforcement Bars, Epoxy Coated	Pound	4,330		4,330
Bar Splicers	Each	52		52
Preformed Joint Strip Seal	Foot	240		240
Bridge Deck Microsilica Concrete Overlay, 2 1/2"	Sq. Yd.	770		770
Bridge Deck Hydro-Scarification, 1/2"	Sq. Yd.	770		770
Deck Slab Repair (Full Depth, Type I)	Sq. Yd.	5		5
Deck Slab Repair (Full Depth, Type II)	Sq. Yd.	39		39
Silicone Bridge Joint Sealer, 2"	Foot	66		66
Drainage Scuppers, DS-II	Each	2		2

- Field welding of construction accessories will not be permitted to beams or girders.
- The Contractor shall make allowance for the deflection of forms, shrinkage and settlement of falsework.
- The existing structural steel coating contains lead. The Contractor shall take appropriate precautions to deal with the presence of lead on this project.
- If the Contractor elects to use cantilever forming brackets on the exterior beams or girders, the brackets shall be placed at the same locations as required for the hardwood blocks in Article 503.06 of the Standard Specifications. If additional cantilever forming brackets are required, hardwood blocking shall be wedged between the exterior and first interior beam at each of these additional bracket locations.
- Protective shielding shall be installed to insure that all electrical appurtenances below the bridge deck are adequately protected.

ABBREVIATION LIST

Abut.	Abutment	F/	Face of	R or Rad.	Radius
Alt.	Alternate	Ft.	Foot or Feet	RR	Railroad
		Ftg.	Footing	Req'd	Required
Bk.	Back	Gr.	Grade	Rt.	Right
Brg.	Bearing			Sht.	Sheet
Btwn.	Between			Spa.	Spaces or Spacing
B/	Bottom of	Jt.	Joint	Sq.	Square
Bot.	Bottom			S.S.	Stainless Steel
		L	Angle	Std.	Standard
CIP	Cast in Place	Lt.	Left	Sta.	Station
CL	Centerline	Lg.	Long	Stl.	Steel
Cfs.	Centers	Max.	Maximum	St.	Street
Cl.	Clear	Min.	Minimum	Sym.	Symmetrical
Conc.	Concrete	Nom.	Nominal	Temp.	Temporary
CJ	Construction Joint	N.T.S.	Not to Scale	Thk.	Thick
Const(r).	Construction	No(s).	Number(s)	T.B.D.	To be determined
		Opp.	Opposite	T/	Top of
Dia.	Diameter			Typ.	Typical
Ea.	Each			UNO	Unless Noted Otherwise
E	East			VIF	Verify in Field
E/	Edge of	Pavi.	Pavement		
EI. or Elev.	Elevation	PL	Plate		
Exist.	Existing	P.C.	Precast		
Exp.	Expansion	P.J.F.	Preformed Joint Filler		
Expy.	Expressway	P.J.S.	Preformed Joint Sealer		
		PGL	Profile Grade Line	W	West
		Prop.	Proposed	W/	With

INDEX OF SHEETS

- GENERAL PLAN & ELEVATION
- STRUCTURAL NOTES, TOTAL BILL OF MATERIAL AND INDEX OF SHEETS
- TYPICAL SECTION THRU BRIDGE
- CONSTRUCTION STAGING DETAILS
- EXPANSION JOINT REMOVAL & REPLACEMENT PLAN
- EXPANSION JOINT REMOVAL & REPLACEMENT DETAILS I
- EXPANSION JOINT REMOVAL & REPLACEMENT DETAILS II
- EXPANSION JOINT REMOVAL & REPLACEMENT DETAILS III
- BAR SPLICER ASSEMBLY DETAILS
- DRAINAGE SCUPPER REMOVAL & REPLACEMENT PLAN
- DRAINAGE SCUPPER DETAILS
- TEMPORARY CONCRETE BARRIER FOR STAGE CONSTRUCTION
- SCARIFICATION AND OVERLAY DETAILS

Bar Size	Min. Lap
#4	1'-8"
#5	2'-2"
#5*	3'-0"
#6	2'-7"
#6*	3'-7"
#7	3'-5"
#8	4'-6"

* Top Horizontal Bar

STRUCTURAL NOTES, TOTAL BILL OF MATERIAL AND INDEX OF SHEETS
F.A.I. 94/ (EDENS EXPRESSWAY)
OVER SKOKIE RIVER
COOK COUNTY
STATION 394+08.55
STRUCTURE NO. 016-0102