

STATE OF ILLINOIS
DEPARTMENT OF TRANSPORTATION

ROUTE NO.	SECTION	COUNTY	TOTAL SHEETS	SHEET NO.
F.A.I.-94/ F.A.P. 346	2003-071 RS	COOK	91	87
FED. ROAD DIST. NO. 7	ILLINOIS	FED. AID PROJECT-		

Contract # 62636

NOTES

Bar splicer assemblies shall be of an approved type and shall develop in tension at least 125 percent of the yield strength of the lapped reinforcement bars.

Splicer rods shall be of minimum 60 ksi yield strength, threaded or coiled full length. All reinforcement bars shall be lapped and tied to the splicer rods or dowel bars.

Bar splicer assemblies shall be epoxy coated according to the requirements for reinforcement bars.

Other systems of similar design may be submitted to the Engineer for approval. Approval shall be based on certified test results from an approved testing laboratory that the proposed bar splicer assembly satisfies the following requirements:

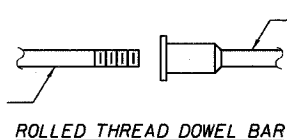
- ① Minimum Capacity = $1.25 \times f_y \times A_l$
(Tension in kips)
- ② Minimum *Pull-out Strength = $0.66 \times f_y \times A_l$
(Tension in kips)

Where f_y = Yield strength of lapped reinforcement bars in ksi.

A_l = Tensile stress area of lapped reinforcement bars.

* = 28 day concrete

The diameter of this part is equal or larger than the diameter of bar spliced.



ROLLED THREAD DOWEL BAR



** ONE PIECE

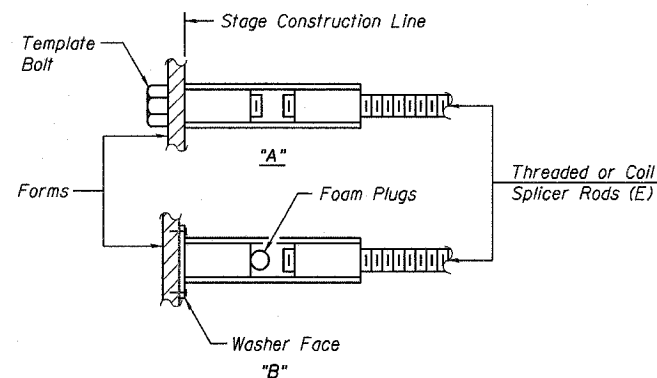
Wire Connector



WELDED SECTIONS

BAR SPLICER ASSEMBLY ALTERNATIVES

** Heavy Hex Nuts conforming to ASTM A 563, Grade C, D or DH may be used.



INSTALLATION AND SETTING METHODS

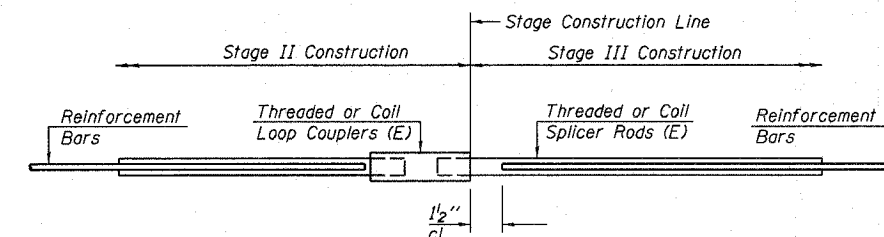
"A" : Set bar splicer assembly by means of a template bolt.

"B" : Set bar splicer assembly by nailing to wood forms or cementing to steel forms.

(E) : Indicates epoxy coating.

BAR SPLICER ASSEMBLIES

Bar Size to be Spliced	Splicer Rod or Dowel Bar Length	Strength Requirements	
		Min. Capacity kips - tension	Min. Pull-Out Strength kips - tension
#4	1'-8"	14.7	7.9
#5	2'-0"	23.0	12.3
#6	2'-7"	33.1	17.4
#7	3'-5"	45.1	23.8
#8	4'-6"	58.9	31.3
#9	5'-9"	75.0	39.6
#10	7'-3"	95.0	50.3
#11	9'-0"	117.4	61.8



STANDARD

Bar Size	No. Assemblies Required	Location
#5	40	Deck
#6	12	Abut. Backwall

BAR SPLICER ASSEMBLY DETAILS
F.A.I. 94/ (EDENS EXPRESSWAY)
OVER SKOKIE RIVER
COOK COUNTY
STATION 394+08.55
STRUCTURE NO. 016-0102

DESIGNED -	KMS
CHECKED -	DWH
DRAWN -	EF
CHECKED -	DWH

LOCHNER
H.W. LOCHNER, INC., CHICAGO, ILLINOIS

BSD-1

11-1-06

T:\2298\struct\dgn\0102BAR00.dgn