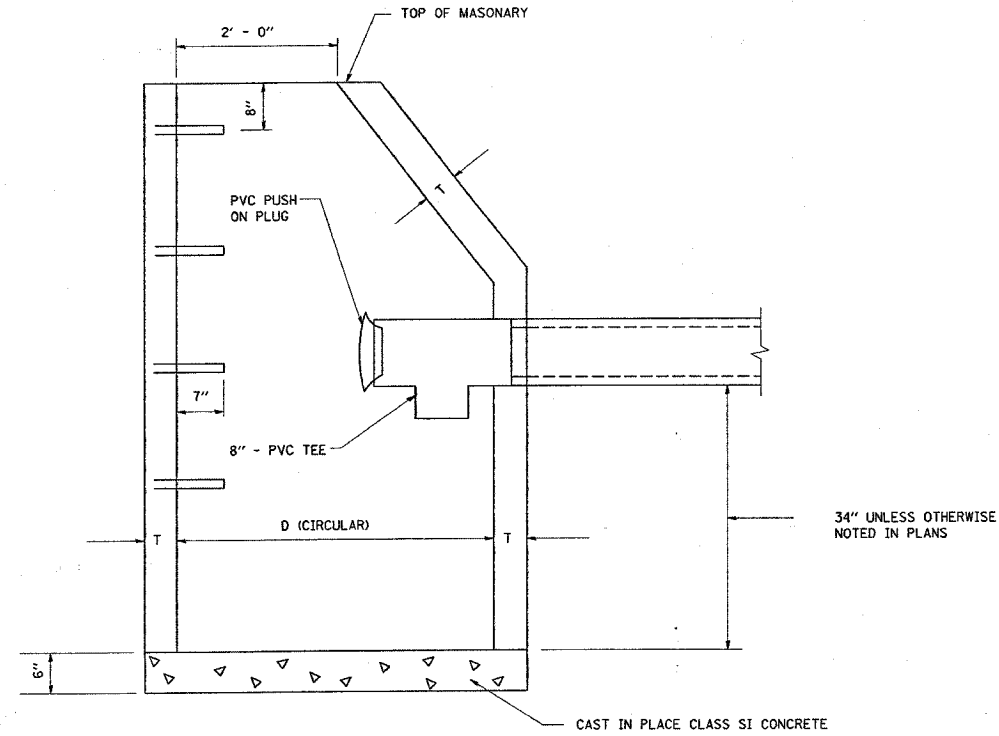


F.A. RTE.	SECTION	COUNTY	TOTAL SHEETS	SHEET NO.
344	3034N-1	COOK	71	51
STA.		TO STA.		
FED. ROAD DIST. NO.	ILLINOIS	FED. AID PROJECT		

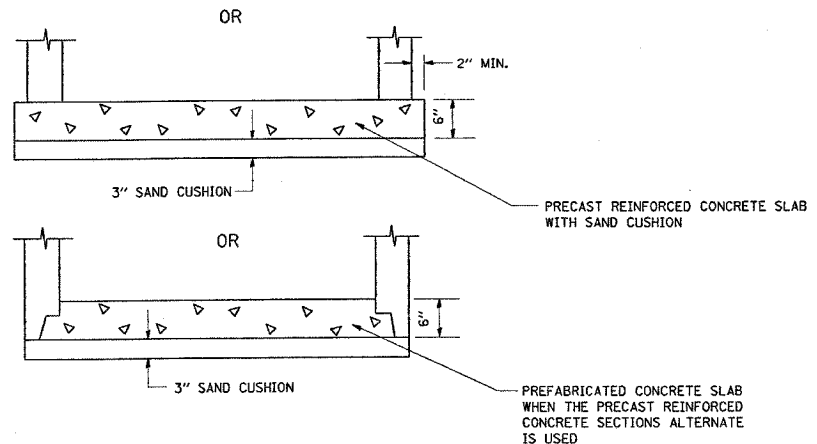
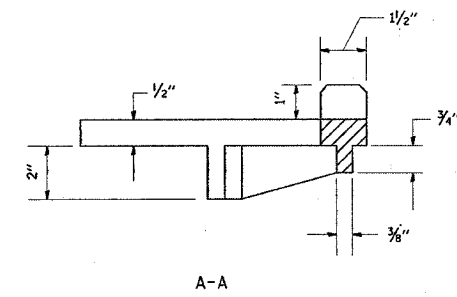
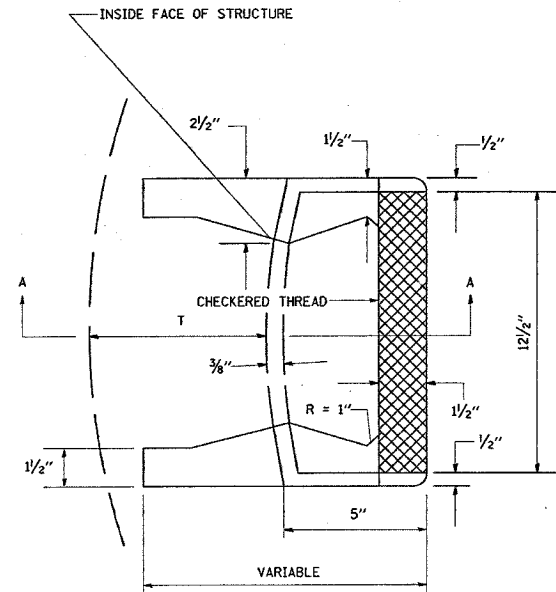


ALTERNATE MATERIALS FOR WALLS	D	C	T (MIN)
PRECAST REINFORCED CONCRETE SECTIONS	4' - 0"	2' - 6"	5"
	5' - 0"	3' - 9"	6"

* DIMENSION "C" FOR PRECAST REINFORCED CONCRETE SECTIONS MAY VARY FROM THE DIMENSION GIVEN TO PLUS 6".

** FOR OPTIONAL PRECAST CONCRETE FLAT SLAB TOP, REFER TO STANDARD 602601

*** THE CAST IRON AS DETAILED HEREON ARE TYPICAL. STEPS OF THE OTHER DESIGN THAT WILL CONFORM TO THE MINIMUM REQUIREMENT OF THE STEPS SHOWN, MAY BE USED WHEN APPROVED BY THE ENGINEER.



CAST IRON STEPS

CAST IRON STEPS SHALL BE GRAY IRON CONFORMING TO THE REQUIREMENTS OF ART. 602.08 OF THE STANDARD SPECIFICATIONS.

STEPS SHALL BE EMBEDDED INTO WALL A MINIMUM OF 3".

STEPS SHALL NOT BE EXTENDED ON THE OUTSIDE.

IN ADDITION TO THE REQUIREMENTS OF ART. 602 OF THE STANDARD SPECIFICATIONS THE CONTRACT UNIT PRICE FOR CATCH BASIN, TYPE A SHALL INCLUDE THE SAND CUSHION WHEN REQUIRED, FURNISHING AND INSTALLING STEPS, AND FURNISHING AND COMPACTING THE SPECIFIED BACKFILL MATERIAL.

ALL CATCH BASINS SHALL BE 4' - 0" DIA. UNLESS OTHERWISE NOTED ON PLANS.

CATCH BASIN TYPE A

CITY OF BLUE ISLAND TYPICAL CATCH BASIN DETAIL

REVISIONS	
NAME	DATE

ILLINOIS DEPARTMENT OF TRANSPORTATION

127TH ST. AT MAPLE AVENUE
CATCH BASIN TYPE "A"
CITY OF BLUE ISLAND DETAILS

SCALE: VERT. DRAWN BY
 HORIZ. CHECKED BY
DATE: 07-24-06

PLOT DATE = 1/12/2007
 FILE NAME = c:\projects\62719\0100483\0100483.dwg
 PLOT SCALE = 50.0000 / 1" = 1'-0"
 USER NAME = drivelogin