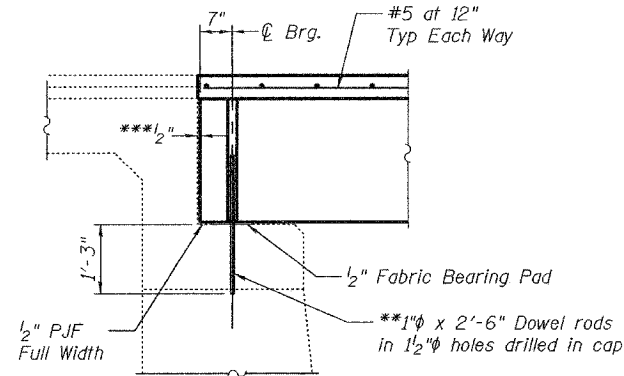


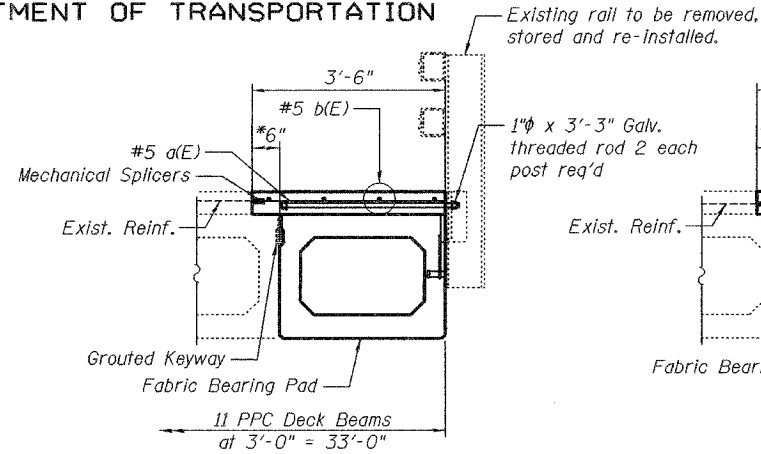
STATE OF ILLINOIS
DEPARTMENT OF TRANSPORTATION

ROUTE NO.	SECTION	COUNTY	TOTAL SHEETS	SHEET NO.
		Henry	-	7
SHEET NO. 3 4 SHEETS				
FED. ROAD DIST. NO. 7	ILLINOIS	FED. AID PROJECT		

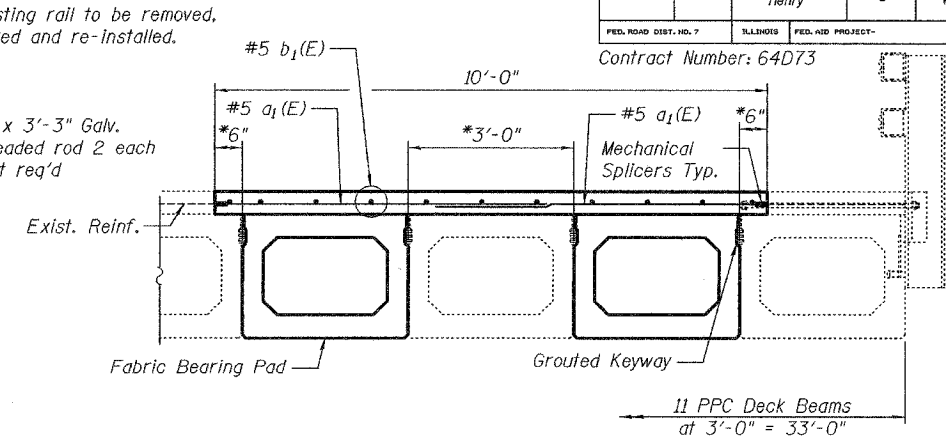
Contract Number: 64D73



TYPICAL SECTION AT ABUTMENT

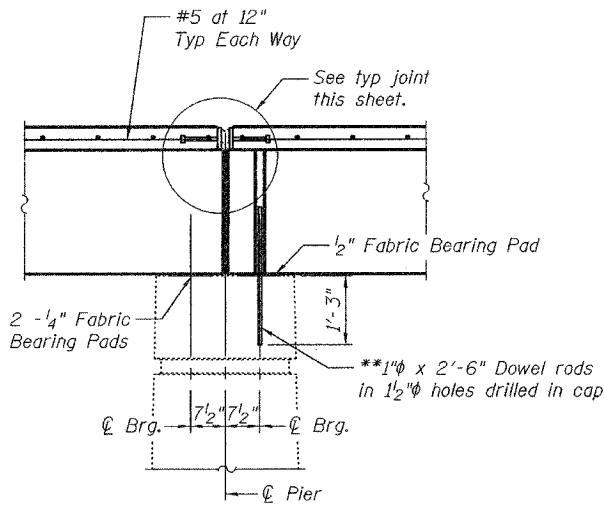


PARTIAL SPAN 1 CROSS SECTION



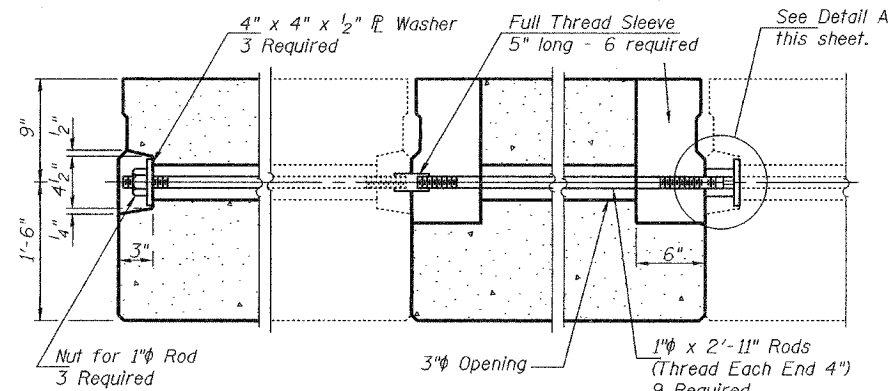
PARTIAL SPAN 2 CROSS SECTION

*Limits of Concrete removal.
**Existing dowel rods are to be burned off, ground flush, and sealed with epoxy prior to placement of new beams. Cost included in Removal of Existing PPC Deck Beams.
After beams have been erected holes shall be drilled into cap and dowel rods placed. Dowel holes shall be filled with non-shrink grout to top of beam and allowed to cure a minimum of 24 hours prior to grouting the shear keys.
***1/2" Joint shall be filled with non-shrink grout. Dimension may vary to accommodate tolerance in beam lengths.

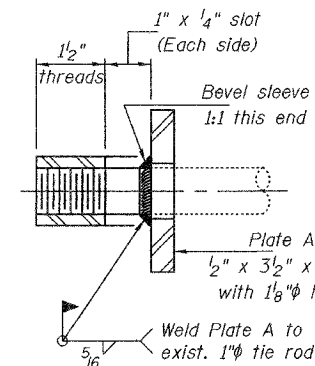


TYPICAL SECTION AT PIER 1
(Pier 2 Opposite Hand)

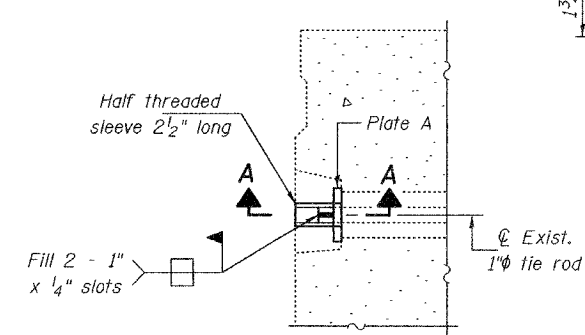
6" x 6" x 1 1/2" Blockout to be filled with Class BS Concrete after Beams have been installed. Cost shall be included in the cost of "PPC Deck Beams (27" Depth). Omit on exterior face of Fascia Beams.



TYPICAL TRANSVERSE TIE ASSEMBLY



SECTION A-A
(9 Required)



DETAIL A

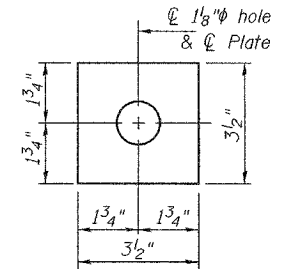
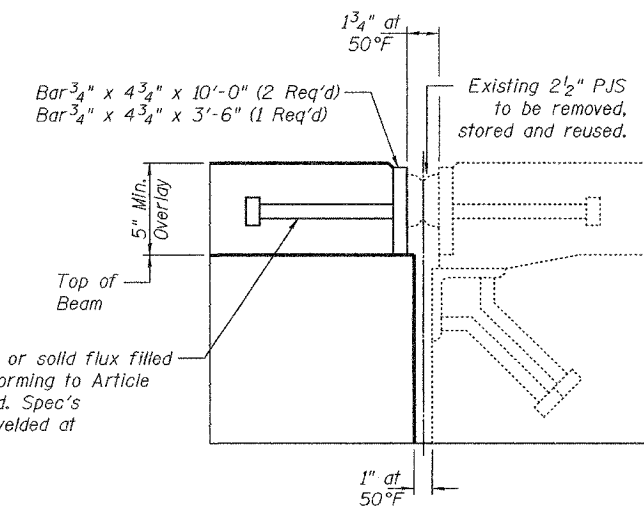
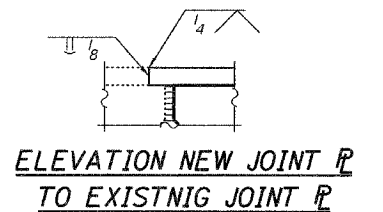


PLATE A
(9 Required)



TYPICAL JOINT DETAIL
(Cost included with PPC Deck Beams)



ELEVATION NEW JOINT P
TO EXISTING JOINT P

BEAM DETAILS
S.B.I. RT. 82
HENRY COUNTY
SN 037-0071

DESIGNED	A.T.H.
CHECKED	A.J.B.
DRAWN	Drew Christopher
CHECKED	A.T.H. A.J.B.

June 21, 2007
EXAMINED *Carl Proyer*
REPAIR PLANS UNIT CHIEF
PASSED *Ralph E. Anderson*
ENGINEER OF BRIDGES AND STRUCTURES