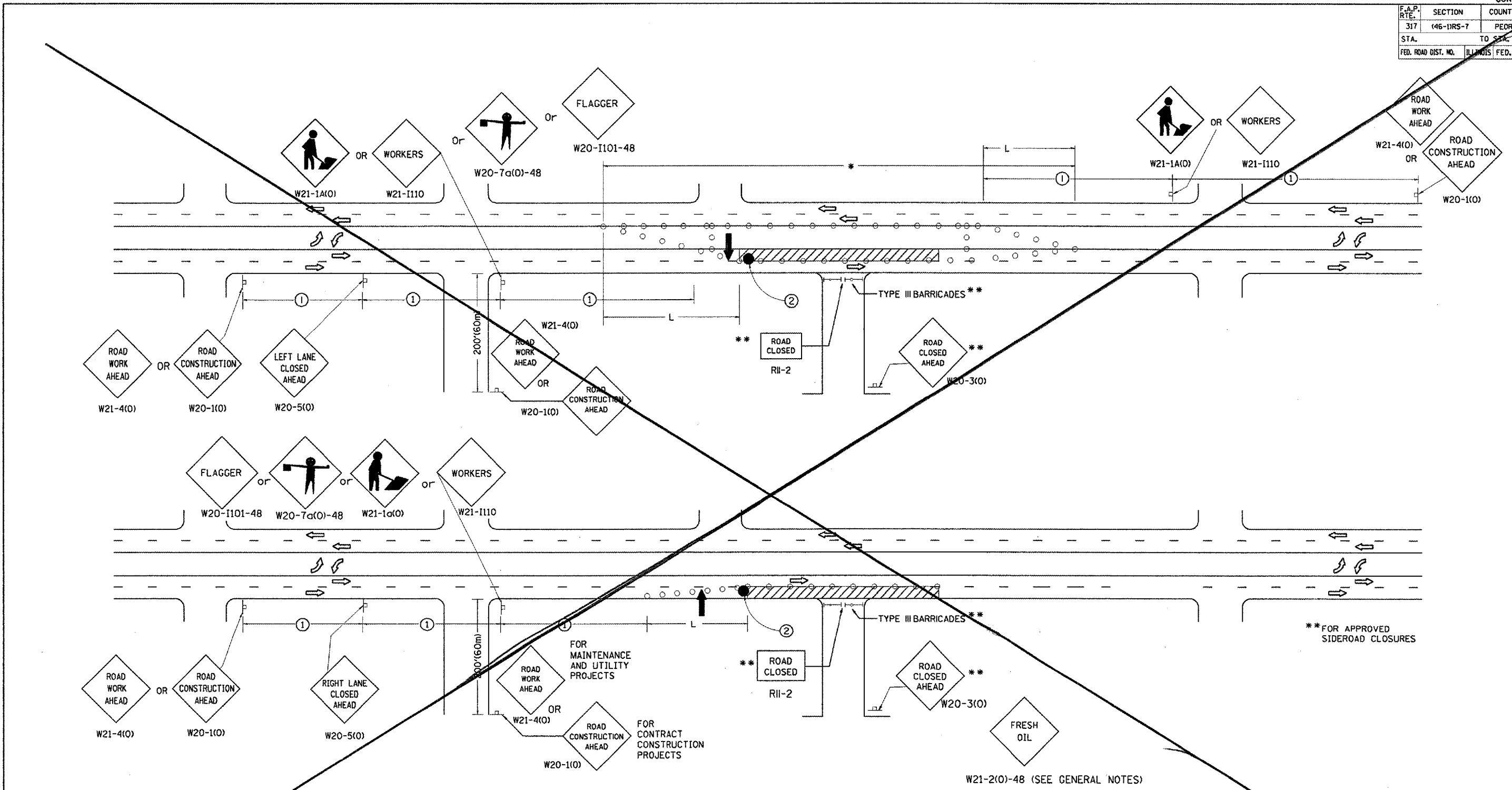


F.A.P. RTE.	SECTION	COUNTY	TOTAL SHEETS	SHEET NO.
317	146-1RS-7	PEORIA	62	60
STA.		TO STA.		
FED. ROAD DIST. NO.		ILLINOIS FED. AID PROJECT		



- SYMBOLS**
- SIGN ON PORTABLE OR PERMANENT SUPPORT
 - CONE, DRUM OR BARRICADE
 - WORK AREA
 - ARROW BOARD
 - DRUM OR BARRICADE WITH FLASHING LIGHT
 - FLAGGER WITH TRAFFIC CONTROL SIGN

**FOR APPROVED SIDEROAD CLOSURES

W21-2(O)-48 (SEE GENERAL NOTES)

SHEET DELETED 7/16/07

All dimensions are in inches (millimeters) unless otherwise noted.

ILLINOIS DEPARTMENT OF TRANSPORTATION	
DISTRICT CADD STANDARD	
STANDARD 701606 (SPECIAL)	
URBAN LANE CLOSURE	
MULTILANE, 2-WAY WITH	
BIDIRECTIONAL LEFT TURN LANE	
FOR SPEEDS < 45 MPH	
CADD STD. 701606-D4	SHEET 2 OF 2
SCALE: NOT DRAWN TO SCALE	DRAWN BY D T CADD
	CHECKED BY

\$\$\$DATE\$\$\$

DGN-ONLY