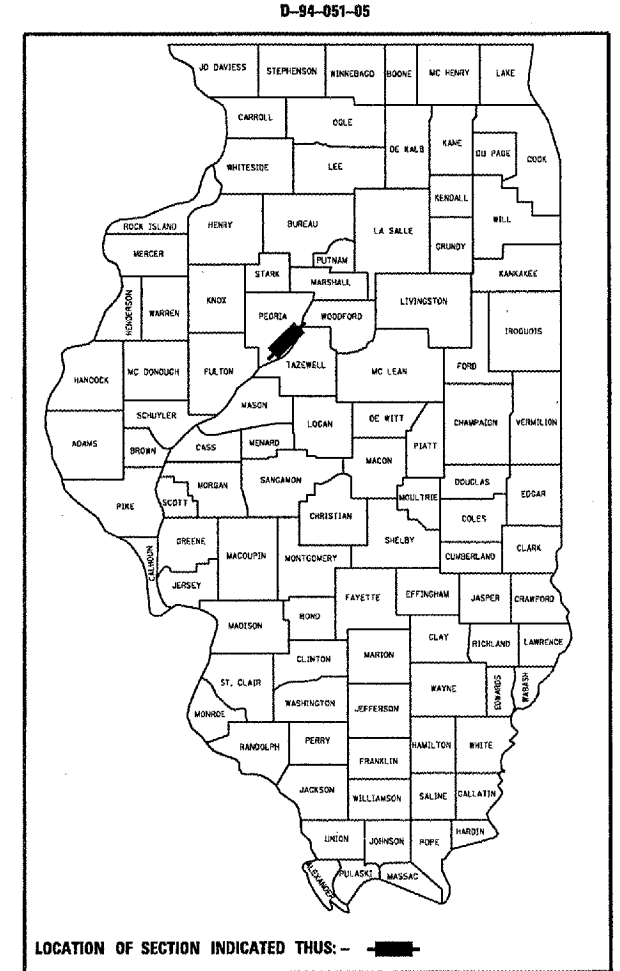


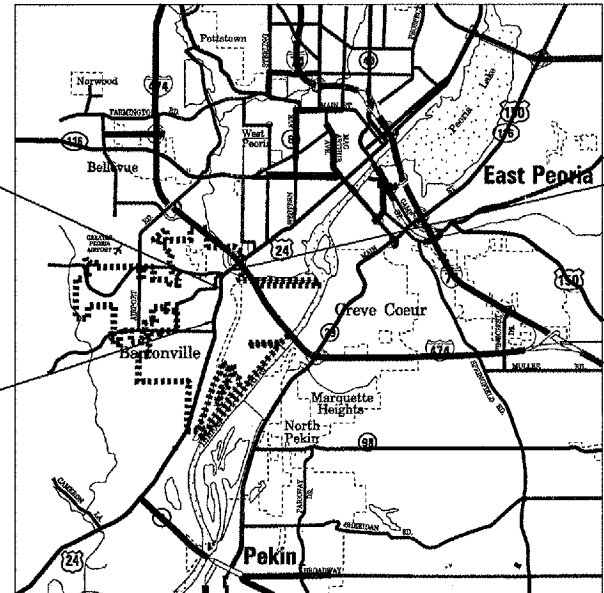
F.A.P. RTE.	SECTION	COUNTY	TOTAL SHEETS	SHEET NO.
317	(46-1)RS-7	PEORIA	62	1

STATE OF ILLINOIS
DEPARTMENT OF TRANSPORTATION
DIVISION OF HIGHWAYS
**PROPOSED
HIGHWAY PLANS**

FAP ROUTE 317 (US 24)
SECTION (46-1)RS-7
PROJECT NHF-0317 (074)
PEORIA COUNTY
C-94-057-05



PROJECT ENDS
STA 186+28.99



MAP NOT TO SCALE

STA EQUATION
STA 35+10.53 =
STA 173+98.44

PROJECT BEGINS
STA 77+45

DESCRIPTION OF WORK

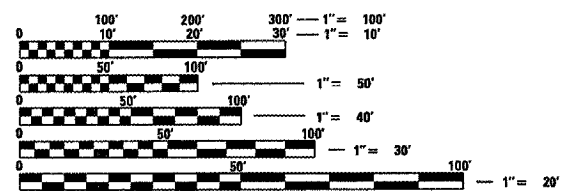
This project consists of milling, resurfacing, and striping of US 24 through Bartonville.

- INDEX OF SHEETS**
- 1 COVER SHEET, INDEX OF SHEETS, HIGHWAY STANDARDS
 - 2 - 3 COMMITMENTS, GENERAL NOTES, PLAN NOTES, UTILITIES
 - 4 - 6 SUMMARY OF QUANTITIES
 - 7 - 11 TYPICAL SECTIONS
 - 12 - 17 SCHEDULES OF QUANTITIES
 - 18 TIE POINTS
 - 19 - 30 EXISTING PLAN SHEETS
 - 31 - 42 PROPOSED PLAN SHEETS
 - 43 - 54 PROPOSED STRIPING SHEETS
 - 55 EXISTING & PROPOSED DETECTOR LOOPS
 - 56 BUTT JOINT AND TEMPORARY RAMP DETAILS
 - 57 HOT MIX ASPHALT SURFACE REMOVAL (COLD MILLING)
 - 58 PERMANENT SURVEY TIE & PERMANENT SURVEY MARKERS TY.I - TY.II
 - ~~59 - 60 STANDARD 701606 (SPECIAL) URBAN LANE CLOSURE, MULTILANE, 2-WAY WITH BIDIRECTIONAL LEFT TURN LANE FOR SPEEDS < 45 MPH~~
 - 61 - 62 TYPICAL PAVEMENT MARKINGS

HIGHWAY STANDARDS

- 606001-03 702001-06
- 667101 780001-01
- 701602-02 781001-02
- 701606-04 886001
- 701701-04 886006

ADT=16000 (2003)
SU%=7.81%
MU%=5.94%



FULL SIZE PLANS HAVE BEEN PREPARED USING STANDARD ENGINEERING SCALES. REDUCED SIZED PLANS WILL NOT CONFORM TO STANDARD SCALES. IN MAKING MEASUREMENTS ON REDUCED PLANS, THE ABOVE SCALES MAY BE USED.

J.U.I.E.
JOINT UTILITY LOCATION INFORMATION FOR EXCAVATION
1-800-892-0123

REVISI 7/16/07

GROSS LENGTH OF PROJECT = 5365.0 FEET = 1.03 MI
NET LENGTH OF PROJECT = 5365.0 FEET = 1.03 MI

STATE OF ILLINOIS
DEPARTMENT OF TRANSPORTATION
DIVISION OF HIGHWAYS

SUBMITTED *MM 3 20 07*

[Signature]
DEPUTY DIRECTOR OF HIGHWAYS, REGION ENGINEER

[Signature]
INTERIM ENGINEER OF DESIGN AND ENVIRONMENT


[Signature]
DIRECTOR OF HIGHWAYS, CHIEF ENGINEER

PRINTED BY THE AUTHORITY
OF THE STATE OF ILLINOIS

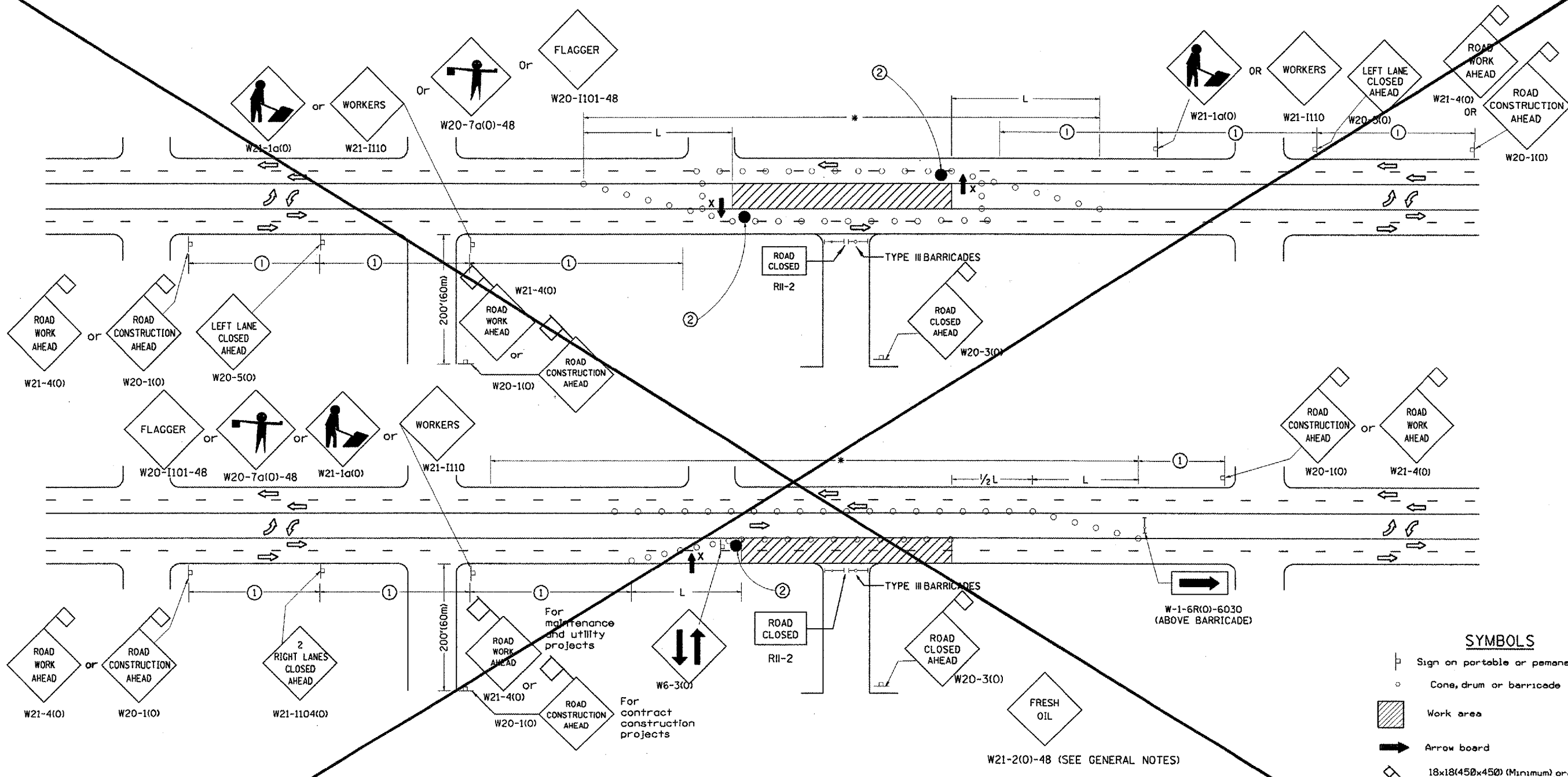
DESIGNER: J. KANTZ/P. CONOVER 309/671-3477 PROJECT ENGR.: M. ADDIS 309/671-3454

SUMMARY OF QUANTITIES

S.A.P. DIST.	SECTION	COUNTY	TOTAL SHEETS	SHEET NO.
31T	646-1RS-7	PEORIA	62	4
STA.	TO STA.			
FED. ROAD DIST. NO. 0	CLASSIFICATION	FED. AID PROJECT		

SUMMARY OF QUANTITIES			TOTAL QUANTITIES	CONSTRUCTION TYPE CODE					
CODE NO.	ITEM	UNIT		1000 20% STATE 80% FEDERAL					
40600200	BITUMINOUS MATERIALS (PRIME COAT)	TON	17	17					
40600300	AGGREGATE (PRIME COAT)	TON	79	79					
40600982	HOT - MIX ASPHALT SURFACE REMOVAL - BUTT JOINT	SQ YD	1522	1522					
40600990	TEMPORARY RAMP	SQ YD	506	506					
40603565	^{POLYMERIZED} HOT - MIX ASPHALT SURFACE COURSE, MIX "E", N70	TON	3963	3963					
44000156	HOT - MIX ASPHALT SURFACE REMOVAL, 1 3/4"	SQ YD	38802	38802					
44001700	COMBINATION CONCRETE CURB AND GUTTER REMOVAL AND REPLACEMENT	FOOT	22	22					
66700205	PERMANENT SURVEY MARKERS, TYPE I	EACH	5	5					
67100100	MOBILIZATION	L SUM	1	1					
70102625	TRAFFIC CONTROL AND PROTECTION, STANDARD 701606	L SUM	1	1					
70102632	TRAFFIC CONTROL & PROTECTION, STANDARD 701602	L SUM	1	1					
70102635	TRAFFIC CONTROL AND PROTECTION, STANDARD 701701	L SUM	1	1					
	70102665 TRAFFIC CONTROL AND PROTECTION, STANDARD 701606, SPECIAL	L SUM	1	1					
70106800	CHANGEABLE MESSAGE SIGN	CAL MO	2	2					
70300100	SHORT-TERM PAVEMENT MARKING	FOOT	3896	3896					

F.A. RTE.	SECTION	COUNTY	TOTAL SHEETS	SHEET NO.
317	(46-1)RS-7	PEORIA	62	59
STA. TO STA.		FED. ROAD DIST. NO. ILLINOIS FED. AID PROJECT		



SYMBOLS

- ▬ Sign on portable or permanent support
- Cone, drum or barricade
- ▨ Work area
- ➡ Arrow board
- ◇ 18x18(450x450) (Minimum) orange flag
- ⊙ Drum or barricade with flashing light
- X High level warning device
- Flagger with traffic control sign

All dimensions are in inches (millimeters) unless otherwise noted.

GENERAL NOTES

Cones at 25' (8m) centers for 250' (75m). Additional cones may be placed at 50' (15m) centers. When drums or type I or II barricades are used, the interval between devices may be doubled.

Where, at anytime, day or night, any vehicle, equipment, workers or their activities encroach on the pavement requiring the closure of one traffic lane in an Urban area.

The L distance shall be defined as:
 ENGLISH METRIC
 $L = WS^2/60$ $L = WS^2/150$
 Where: W = Width of closure in feet(meters).
 S = Normal posted speed limit in mph(km/h).

If the work operation is performed between 9:00 a.m. and 3:00 p.m. and does not exceed 15 min Traffic protection shall be as shown for Std. 701301.

Form "BT 725" is required.

SIGN SPACING	
Posted Speed	Sign Spacing
55	500' (164m)
50-45	350' (115m)
<45	200' (60m)

- ① = Refer to SIGN SPACING TABLE for distances.
- ② = Required for speeds > 40 MPH

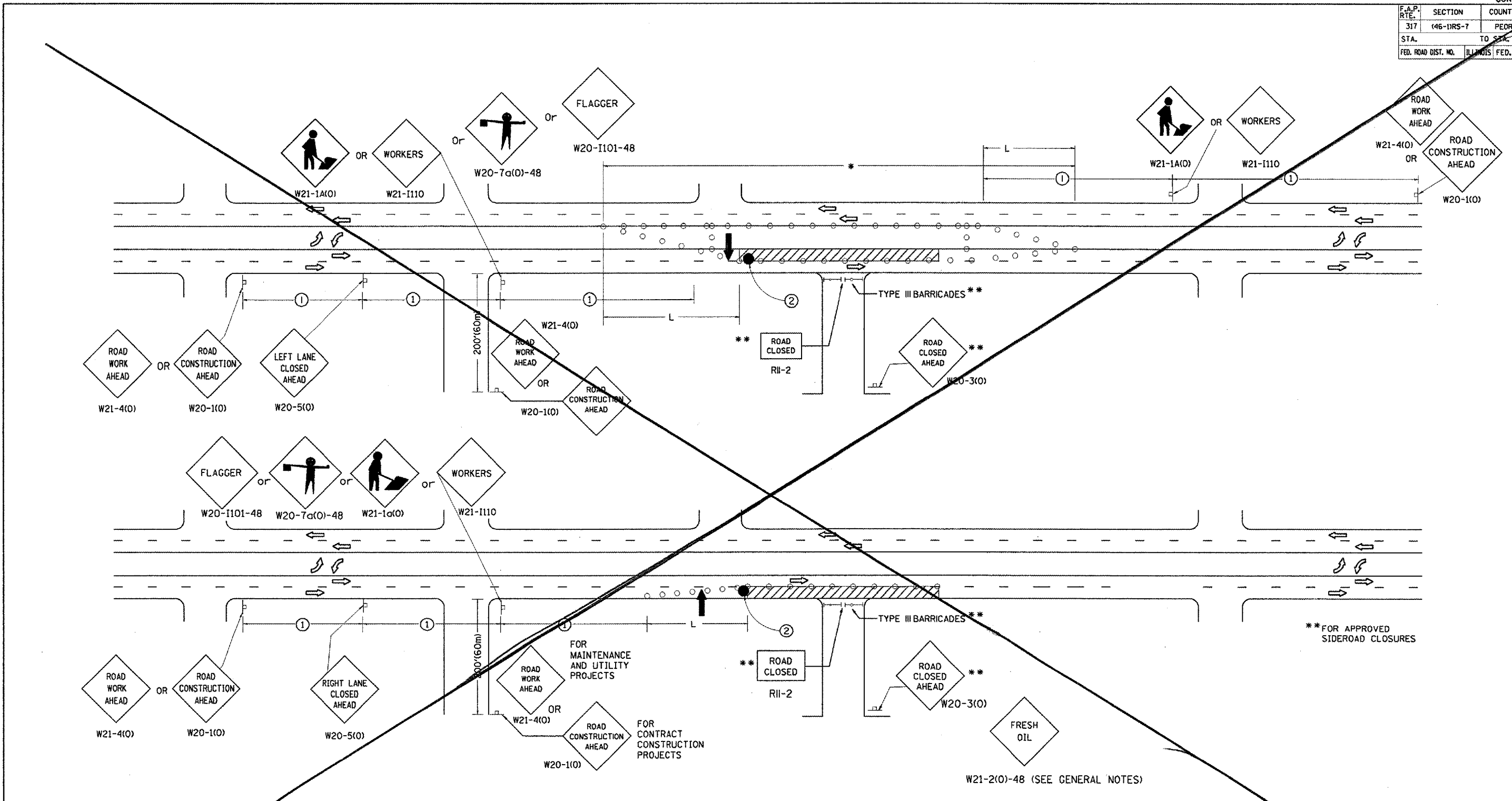
△ SHEET DELETED 7/16/07

DATE	REVISIONS	BY
1-1-97	RENUM. F-6.06, NEW REVISIONS BOX, REVISED TITLE	T.P.
3-11-97	CHANGE TITLE, ADD SHEET 2	S.N.
6-1-97	REVISE SYMBOLS NOTE	S.N.
3-9-99	REVISE SYMBOLS & NOTES	S.N.
10-16-06	REVISED TO 2007 SPEC.	M.A.

ILLINOIS DEPARTMENT OF TRANSPORTATION
DISTRICT CADD STANDARD
 STANDARD 701606 (SPECIAL)
 URBAN LANE CLOSURE
 MULTILANE, 2-WAY WITH
 BIDIRECTIONAL LEFT TURN LANE
 FOR SPEEDS < 45 MPH
 CADD STD. 701606-04 SHEET 1 OF 2
 SCALE: NOT DRAWN TO SCALE DRAWN BY CADD CHECKED BY

\$\$\$DATE\$\$\$

F.A.P. RTE.	SECTION	COUNTY	TOTAL SHEETS	SHEET NO.
317	146-1RS-7	PEORIA	62	60
STA.		TO STA.		
FED. ROAD DIST. NO.		ILLINOIS FED. AID PROJECT		



**FOR APPROVED SIDEROAD CLOSURES

W21-2(O)-48 (SEE GENERAL NOTES)

- SYMBOLS**
- SIGN ON PORTABLE OR PERMANENT SUPPORT
 - CONE, DRUM OR BARRICADE
 - WORK AREA
 - ARROW BOARD
 - DRUM OR BARRICADE WITH FLASHING LIGHT
 - FLAGGER WITH TRAFFIC CONTROL SIGN

SHEET DELETED 7/16/07

All dimensions are in inches (millimeters) unless otherwise noted.

ILLINOIS DEPARTMENT OF TRANSPORTATION
DISTRICT CADD STANDARD
 STANDARD 701606 (SPECIAL)
 URBAN LANE CLOSURE
 MULTILANE, 2-WAY WITH
 BIDIRECTIONAL LEFT TURN LANE
 FOR SPEEDS < 45 MPH
 CADD STD. 701606-D4 SHEET 2 OF 2
 SCALE: NOT DRAWN TO SCALE DRAWN BY D T CADD
 CHECKED BY

\$\$\$DATE\$\$\$

DGN-ONLY