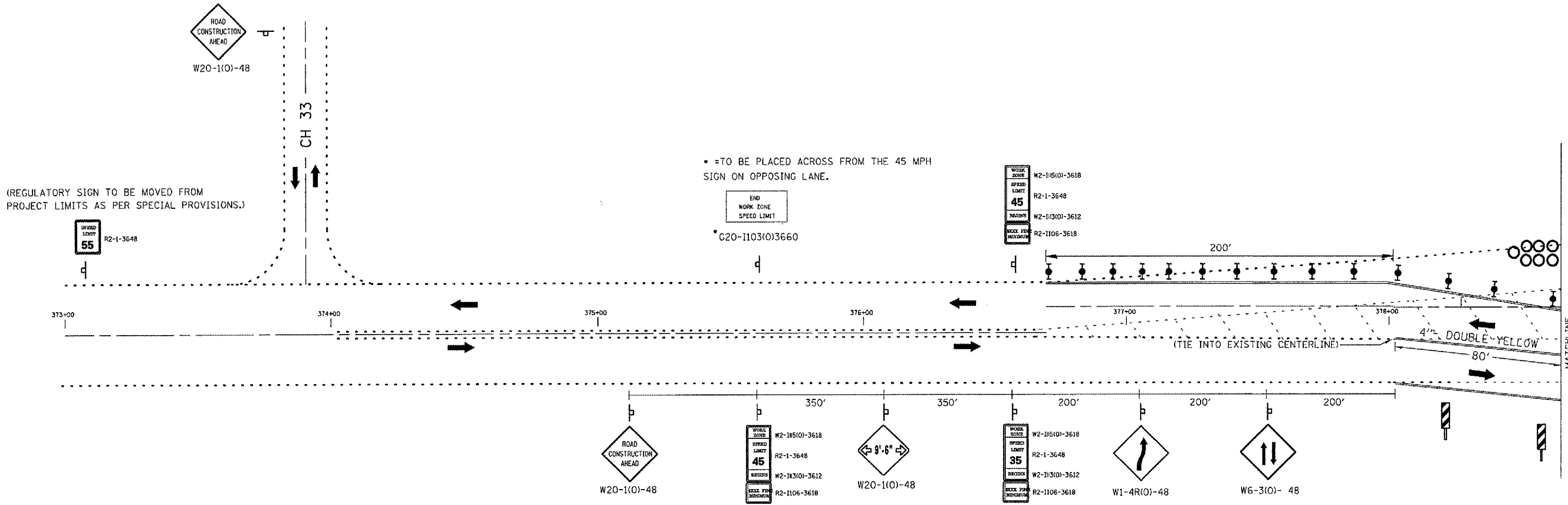


F.A.S. RTE.	SECTION	COUNTY	TOTAL SHEETS	SHEET NO.
1388	(ZC-120-BR)I	PEORIA	20	11

STA. 380+48.12 TO STA. 381+61.87
 FED. ROAD DIST. NO. 4 ILLINOIS FED. AID PROJECT



(REGULATORY SIGN TO BE MOVED FROM PROJECT LIMITS AS PER SPECIAL PROVISIONS.)

* = TO BE PLACED ACROSS FROM THE 45 MPH SIGN ON OPPOSING LANE.

STAGE I PLAN

	Work Area
	Sign on Portable Support
	Type III Barricade
	Drum w/ steady burning light
	Double Vertical Panels w/ steady-burning lights
	Type C bidirectional reflector
	Temporary Concrete Barrier
	Impact Attenuator

SN. 072-0137 IL.8
 over Big Hollow Crk.

REVISIONS	
NAME	DATE

ILLINOIS DEPARTMENT OF TRANSPORTATION

TRAFFIC CONTROL SPECIAL

SCALE: VERT. DRAWN BY CEJ
 HORIZ. CHECKED BY
 DATE 04-25-2007

NOT TO SCALE

DATE: 04-18-07
 FILE: I:\GENDRAF\STAMP\ASOUND 14\BRIDGE Rep-Contract\68751 SN072-0137-0137I\DrawnBigHollowCrk.dgn
 SCALE:
 REFS: